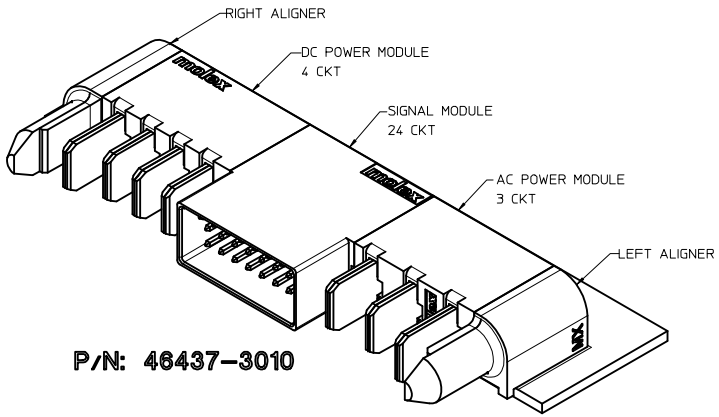
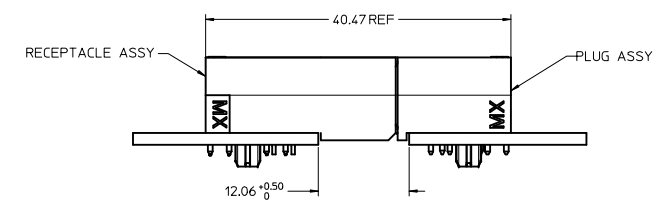
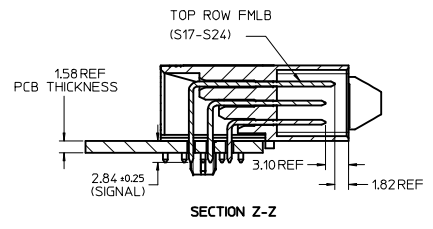
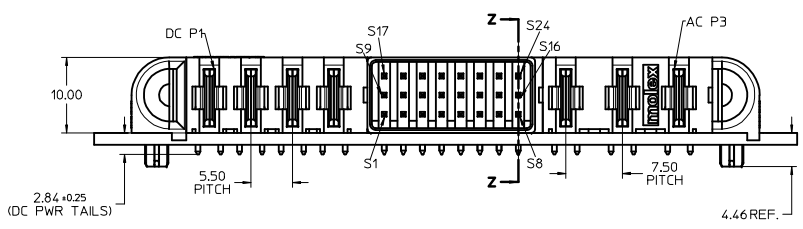


RECOMMENDED PCB LAY-OUT AND KEEP-OUT ZONE



- NOTES:
- MATERIAL:
 - HOUSINGS: LCP UL94, V-0, COLOR: BLACK.
 - TERMINALS: COPPER ALLOY.
 - PLATING: 0.00127 NICKEL OVERALL WITH 0.00254 SELECTIVE TIN ON SOLDER TAILS AND 0.000762 SELECTIVE GOLD ON CONTACT AREA.
 - ASSEMBLIES PACKED IN TRAYS; SPO: TBD
 - PC BOARD REQUIRES SOLDER THRU HOLES. REFER TO PS-46436-100 FOR DETAILS
 - PRODUCT SPEC: PS-46436-100.
 - APPLICATION SPEC: AS-46436-100.
 - PRODUCT TO MEET RoHS REQUIREMENTS.
 - ASSEMBLY MATES TO MOLEX RECEPTACLE ASSEMBLY P/N 46436-3010 OR 46562-3010.

RELEASED INITIAL BEZ/MSF:2546 DRWN:JOU/LES 2009/05/05 CHKD:KJH 2009/05/05 APPR:APATEL 2009/05/05 REV	QUALITY SYMBOLS	GENERAL TOLERANCES (UNLESS SPECIFIED)	DIMENSION STYLE MM ONLY	SCALE NTS	DESIGN UNITS METRIC	THIRD ANGLE PROJECTION
		mm INCH	DRAWN BY KJKOH	DATE 11/3/2009	TITLE	
		4 PLACES ± --- ± ---	CHECKED BY KJKOH	DATE 11/3/2009	RA PLUG ASSY TEN60 POWER, GUIDES G-4P-24S-3AC-G	
		3 PLACES ± --- ± ---	APPROVED BY SHONG	DATE	MOLEX INCORPORATED	
	2 PLACES ± 0.25 ± ---					
	1 PLACE ± 0.25 ± ---					
	ANGULAR ± 1/2°					
	DRAFT WHERE APPLICABLE MUST REMAIN WITHIN DIMENSIONS		MATERIAL NO. 46437-3010	DOCUMENT NO. SD-46437-310	SHEET NO. 1 OF 1	
			THIS DRAWING CONTAINS INFORMATION THAT IS PROPRIETARY TO MOLEX INCORPORATED AND SHOULD NOT BE USED WITHOUT WRITTEN PERMISSION			