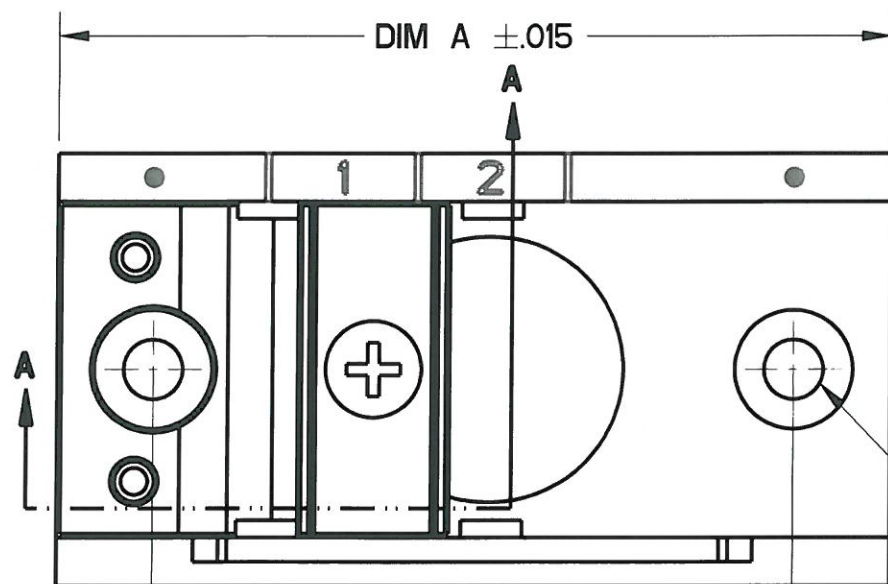
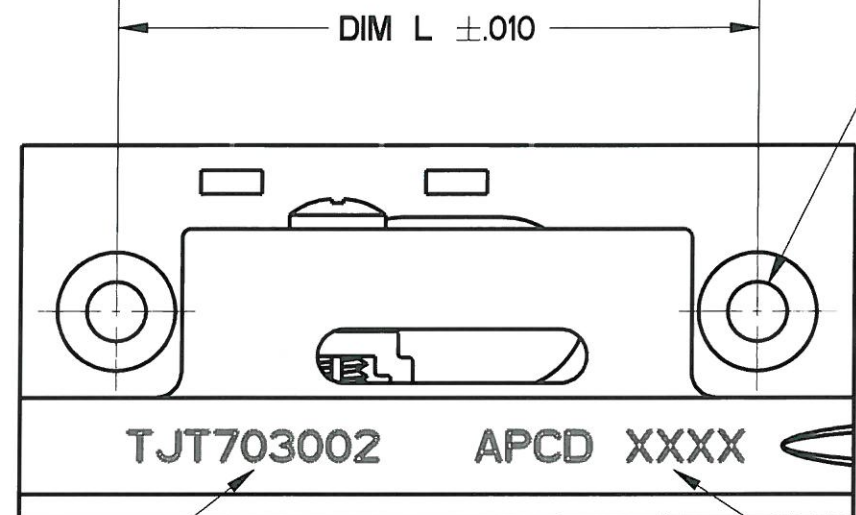


REV	ECN	APP'D
A	6689	JT 4/20/11



Ø.154 MOUNTING HOLES
CSK 82° X .307 DIA
4X

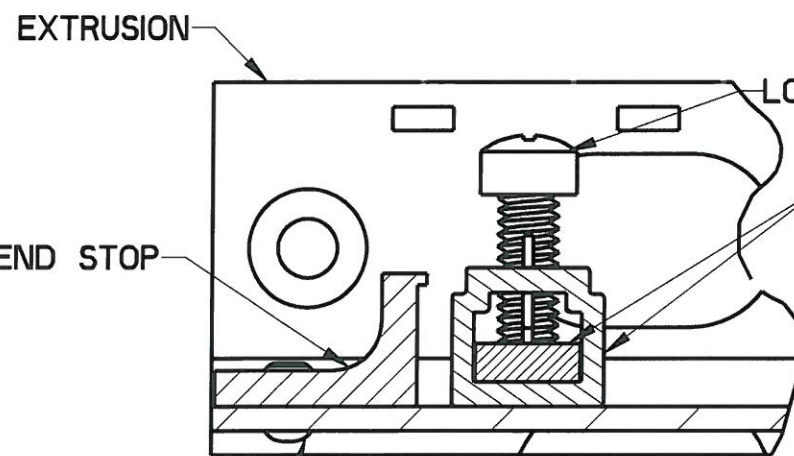
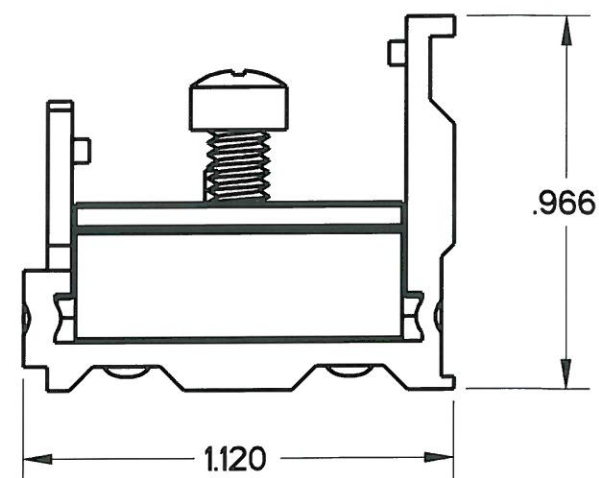


APCD P/N

DATE CODE

NOTES:

- MATERIALS AND FINISH
TRACK, LOCKING CLAMP, AND END STOP - ALUMINUM ALLOY 6063
TEMPER T5, PER FED SPEC. QQ-A-200/9, BLACK ANODIZE PER MIL-A-8625
TYPE II, CLASS 2.
LOCKING CLAMP SCREW - CORROSION RESISTANT, PASSIVATED, SELF-LOCKING.
RIVETS - ALUMINUM ALLOY #2117, CHROMATE PER MIL-DTL-5541, CLASS 1A, YELLOW.
- PARTS CONFORM TO REQUIREMENTS OF M81714/16, EXCEPT NO. OF MOUNTING POSITIONS.
- APCD P/N TJT703002 SHOWN.



SECTION A-A

2X RIVET (HEADS ON BOTTOM)

* DIVIDE BY 3 FOR SIZE 12 MODULE MOUNTING

APCD P/N	MTG POS.	DIM A	DIM L
TJT703002	2	2.171	1.671
TJT703016	16	7.631	7.131
TJT703017	17	8.021	7.521
TJT703018	18	8.411	7.911
TJT703019	19	8.801	8.301
TJT703020	20	9.191	8.691
TJT703021	21	9.581	9.081
TJT703028	28	12.311	11.811

DIMENSIONS ANSI Y14.5M UNITS: INCHES Pro/E FILE	TOLERANCES .XX ±0.01 .XXX ±0.005 ANGLES ±2.0°	PROJECTION 	Amphenol Pcd SPECIFICATION DRAWING ENGR M.Hai 12-Apr-11		TITLE TERMINAL JUNCTION TRACK FEEDBACK - LIGHTWEIGHT	
			ORIGINAL 	THIS DOCUMENT CONTAINS PROPRIETARY INFORMATION WHICH IS THE CONFIDENTIAL PROPERTY OF AMPHENOL PCD INC. BEVERLY, MA, USA		CHKD 4/19/11 APPD 4/20/11

TJT701002

TJT701002