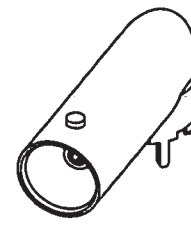
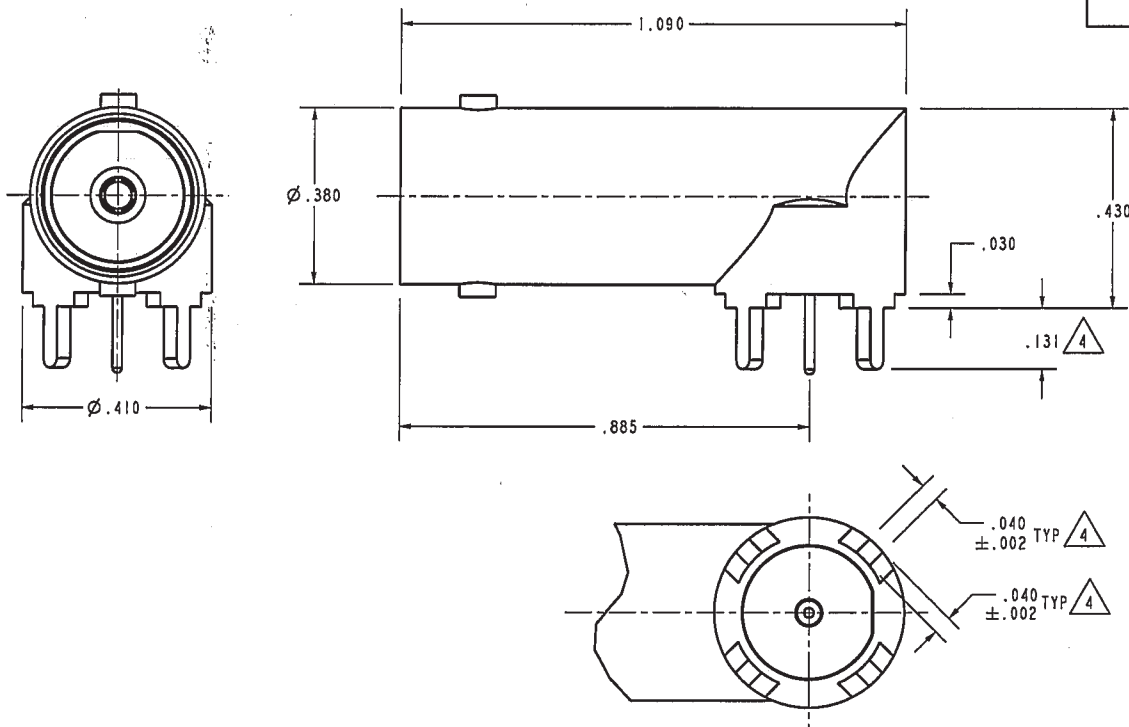


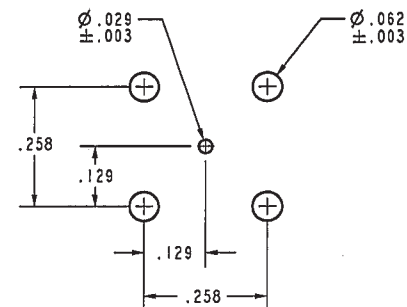
RED INDICATES ORIGINAL

DATA CONTAINED IN THIS DOCUMENT IS PROPRIETARY TO TROMPETER ELECTRONICS, INC. AND SHALL NOT BE DISCLOSED, COPIED OR USED FOR PROCUREMENT OR MANUFACTURE WITHOUT EXPRESS WRITTEN PERMISSION

REVISIONS				1-0518	SH 1
REV	ECO NO.	DESCRIPTION	DWN	APPROVED	DATE
A	10700	Ø .410 WAS Ø .414; .040 WAS .050 & .047; .258 WAS .260; Ø .129 WAS Ø .130; Ø .029 WAS Ø .046; Ø .062 WAS Ø .083	AAH	Bm; <i>(Signature)</i>	4/22/94



SCALE 2.000



RECOMMENDED MOUNTING HOLE PATTERN

$\triangle 4$ DIMENSIONS INDICATED ARE BEFORE TINNING OF BODY LEGS WITH $.0015$ MAX THK, SN63 PER QQ-S-571 OR EQUIV TO WITHIN $.060$ OF SHOULDER

- FINISH: TFS-1A (NICKEL)
- 75Ω CIRCUIT BOARD MOUNTED RIGHT ANGLE BNC RECEPTACLE
- ALL DIM ARE IN INCHES

QTY	DESCRIPTION		PART NUMBER		ITEM	
TOL UNLESS SPECIFIED		 <small>© cinch connectivity solutions brand</small>		UCBJR220		
.XX	$\pm .005$					
.XXX	$\pm .005$					
XXX	$\pm .005$					
DWN	AAH	4-20-94	MATERIAL	CODE IDENT	DRAWING NO.	REV
CHK	<i>Bm</i>	<i>4-22-94</i>	-----	14949	1-0518	A
ENGR	<i>RJ</i>	<i>4-22-94</i>				
NEXT ASSY	APPR	<i>(Signature)</i>	SCALE 4/1	DATE 4-15-94	SHEET 1 OF 2	