

## Housing - HC-HPR-B10-HHWH-1STM32-EM-BK - 1411070

Please be informed that the data shown in this PDF Document is generated from our Online Catalog. Please find the complete data in the user's documentation. Our General Terms of Use for Downloads are valid (<http://phoenixcontact.com/download>)



HEAVYCON B10 sleeve housing, HPR series, with screw locking, with M32 thread, lateral outlet, for increased environmental and EMC requirements

### Why buy this product

- Vibration and shock: IEC 61373/EN 50155, category 1, class 1B



### Key Commercial Data

Packing unit	1 STK
Weight per Piece (excluding packing)	540.0 g
Custom tariff number	85389099
Country of origin	China

### Technical data

#### Dimensions

Height	100.5 mm
Width	58 mm
Length	145 mm

#### Ambient conditions

Degree of protection of housing (IP)	IP68 (0.5 bar / 24 h)
	IP69K
Ambient temperature (operation)	-40 °C ... 125 °C

#### General

Note	For contact inserts HC-B10, BB18, DD42, M, K8/24
Size	B10

# Housing - HC-HPR-B10-HHWH-1STM32-EM-BK - 1411070

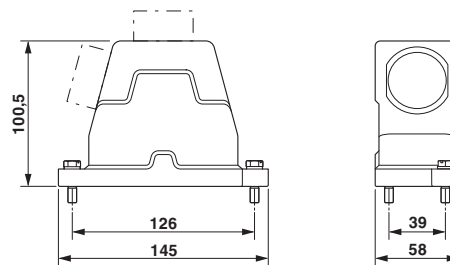
## Technical data

### General

Housing type	Sleeve housing
Locking type	with screw locking
No. of cable outlets	1
Cable exit	lateral
Screw connection	none
Type of the screw connection	1x M32
Protective cover	no
Housing material	Aluminum die-cast
Housing surface material	Powder-coated, black
Material lock	Stainless steel
Material of locking screw	Stainless steel
Assembly instructions	M6 locking screw, slotted hexagon head screw (SW10), tightening torque: 4 Nm

## Drawings

Dimensional drawing



Dimensional drawing

## Classifications

### eCl@ss

eCl@ss 5.1	27143424
eCl@ss 6.0	27261203
eCl@ss 8.0	27440202
eCl@ss 9.0	27440202

### ETIM

ETIM 4.0	EC000437
ETIM 5.0	EC000437

## Housing - HC-HPR-B10-HHWH-1STM32-EM-BK - 1411070

### Approvals

Approvals

---

Approvals

EAC / GL

---

Ex Approvals

---

Approvals submitted

---

### Approval details

EAC

GL

### Accessories

#### Accessories

#### Extension adapter

Extension adapter - ENLAR-M-KV-M32/M40 - 1647682



Step-up adapter, M32 to M40, including O-ring

#### Full screw connection

Cable gland - G-INS-M32-M68N-PNES-GY - 1411127



Cable gland, Cable gland material: Polyamide 6, External cable diameter 15 mm ... 21 mm, Shielding: No, Connecting thread: M32, Color: silver-gray RAL 7001

## Housing - HC-HPR-B10-HHWH-1STM32-EM-BK - 1411070

### Accessories

Cable gland - G-INS-M32-M68N-PNES-BK - 1411136



Cable gland, Cable gland material: Polyamide 6, External cable diameter 15 mm ... 21 mm, Shielding: No, Connecting thread: M32, Color: jet black RAL 9005

---

Cable gland - G-INS-M32-M68N-NNES-S - 1411166



Cable gland, Cable gland material: Brass, nickel-plated, External cable diameter 15 mm ... 21 mm, Shielding: No, Connecting thread: M32, Color: silver

---

Cable gland - HC-M-KV-M32(19-27) - 1646010



Metal screw connection up to 5 bar, thread length: 8 mm, cable diameter: 19 - 27 mm, WAF 43, screw connection: M32

---

Cable gland - G-INSEC-M32-M68N-NCRS-S - 1411191



Cable gland, Cable gland material: Brass, nickel-plated, External cable diameter 14 mm ... 21 mm, Shielding: yes, Connecting thread: M32, Color: silver

---

Cable gland - HC-M-KV-Z-M32 - 1646162



Metal screw connection with strain relief clamp, thread length: 8 mm, cable sealing area: 18 - 27 mm, clamping area: 19 - 30 mm, SW 40, screw connection: M32

---

## Housing - HC-HPR-B10-HHWH-1STM32-EM-BK - 1411070

### Accessories

Cable gland - HC-M-KV-T-M32 - 1646201



Metal screw connection with cable bend protection and strain relief, thread length: 8 mm, cable sealing area: 18 - 27 mm, clamping area: 20 - 30 mm, SW 40, screw connection: M32

---

Plug for cable screw gland

Filler plugs - HC-M-BS-M32 - 1645862



Filler plug, metal, size: M32

---

Reducing adapter

Reducing adapter - REDUC-M-KV-M32/M25 - 1647637



Reducing adapter, metal, M32 to M25, including O-ring