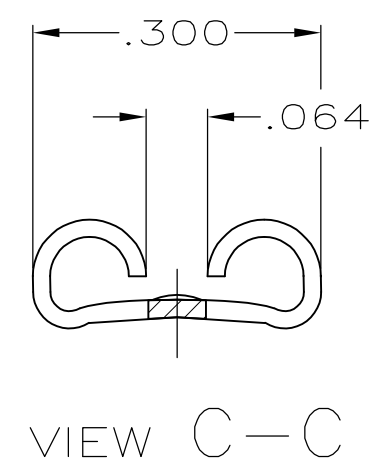
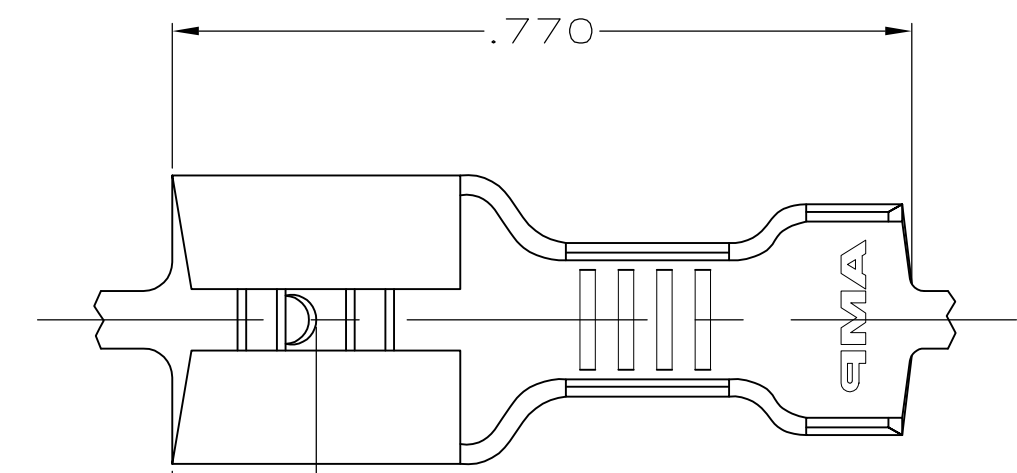
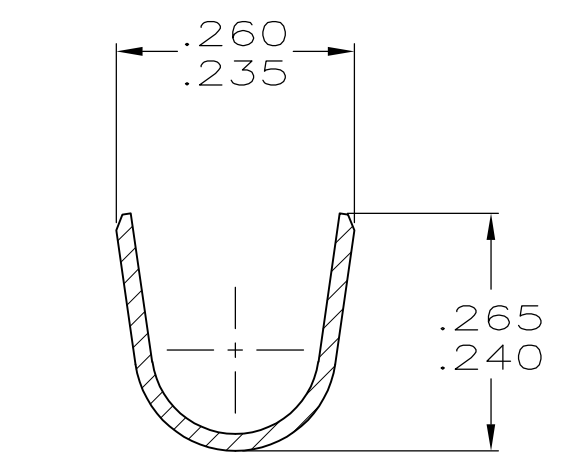
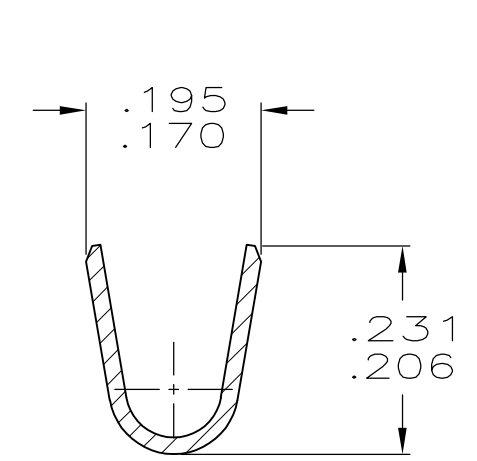
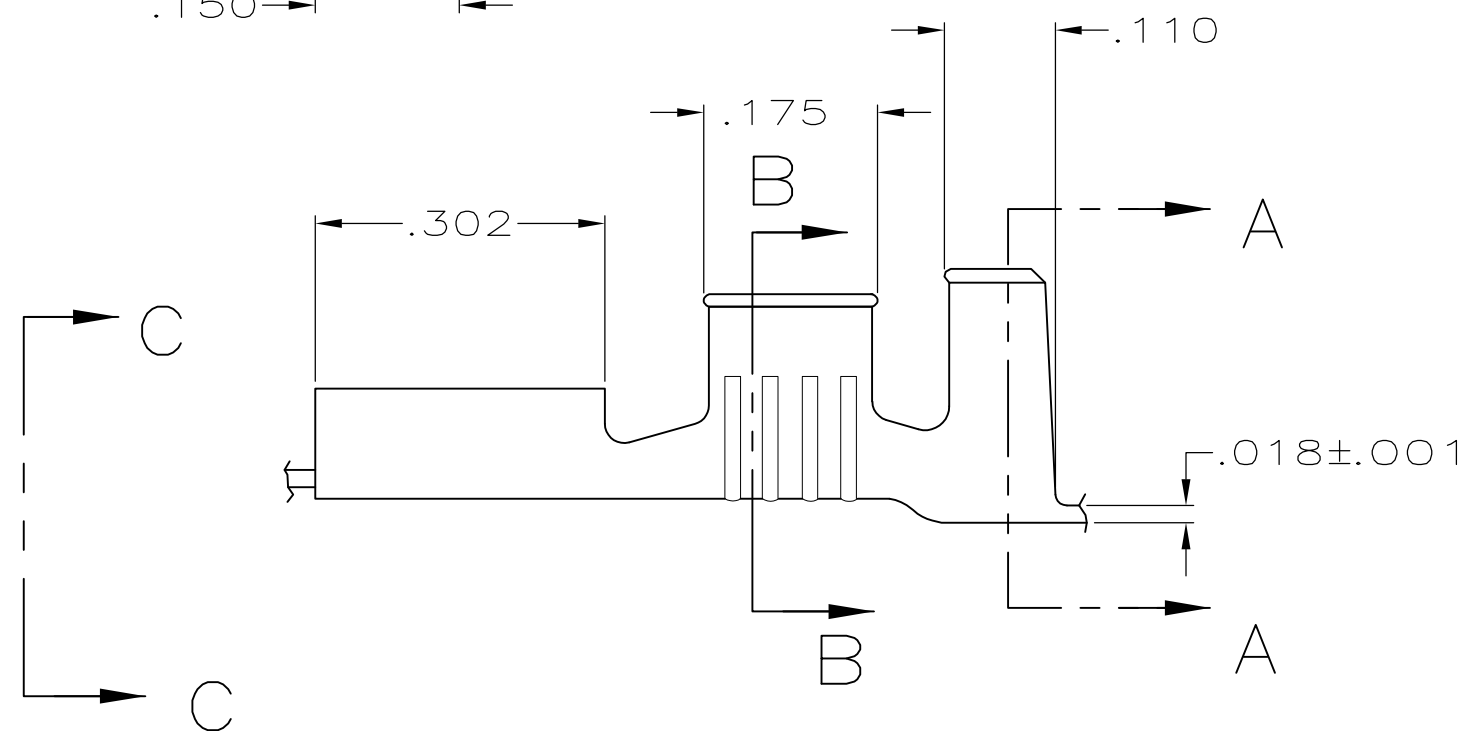


THIS DRAWING IS UNPUBLISHED. RELEASED FOR PUBLICATION
 © COPYRIGHT - By - ALL RIGHTS RESERVED.

LOC	DIST	REVISIONS			
P	LTR	DESCRIPTION	DATE	DWN	APVD
AF	50	L	REVISED PER ECR-12-013459	27NOV2012	KH PD



- 1 CONTINUOUS STRIP ON REELS.
- 2 MATING TAB THK TO BE .032±.001.
- 3 WIRE SIZE IS #12-#10 AWG.
- 4 INSULATION RANGE IS .150-.200 DIA.
- 5 PRELIMINARY - NOT FOR PRODUCTION



.000150 MIN NICKEL	H04 C.R.STEEL	5 62428-4
TIN	H03 PHOS BRONZE	62428-3
TIN	BRASS	62428-2
-	H04 BRASS	5 62428-1
FINISH	MATERIAL	PART NO.

THIS DRAWING IS A CONTROLLED DOCUMENT.		DWN	JR RUTH	9/12/96	TE Connectivity																
DIMENSIONS: INCHES		CHK	MS FEHER	9/12/96				NAME RECEPTACLE, FASTON, .250 SERIES													
TOLERANCES UNLESS OTHERWISE SPECIFIED:		APVD	J HUZVAR	9/12/96																	
<table border="0"> <tr><td>0 PLC</td><td>± -</td></tr> <tr><td>1 PLC</td><td>± -</td></tr> <tr><td>2 PLC</td><td>± -</td></tr> <tr><td>3 PLC</td><td>± .015</td></tr> <tr><td>4 PLC</td><td>± -</td></tr> <tr><td>ANGLES</td><td>± -</td></tr> </table>		0 PLC	± -	1 PLC				± -	2 PLC	± -	3 PLC	± .015	4 PLC	± -	ANGLES	± -	PRODUCT SPEC		SIZE		
0 PLC	± -																				
1 PLC	± -																				
2 PLC	± -																				
3 PLC	± .015																				
4 PLC	± -																				
ANGLES	± -																				
MATERIAL SEE TABLE		FINISH SEE TABLE		WEIGHT -		A3 00779 C-62428		-													
CUSTOMER DRAWING				SCALE		1:1		SHEET 1 OF 1		REV L											