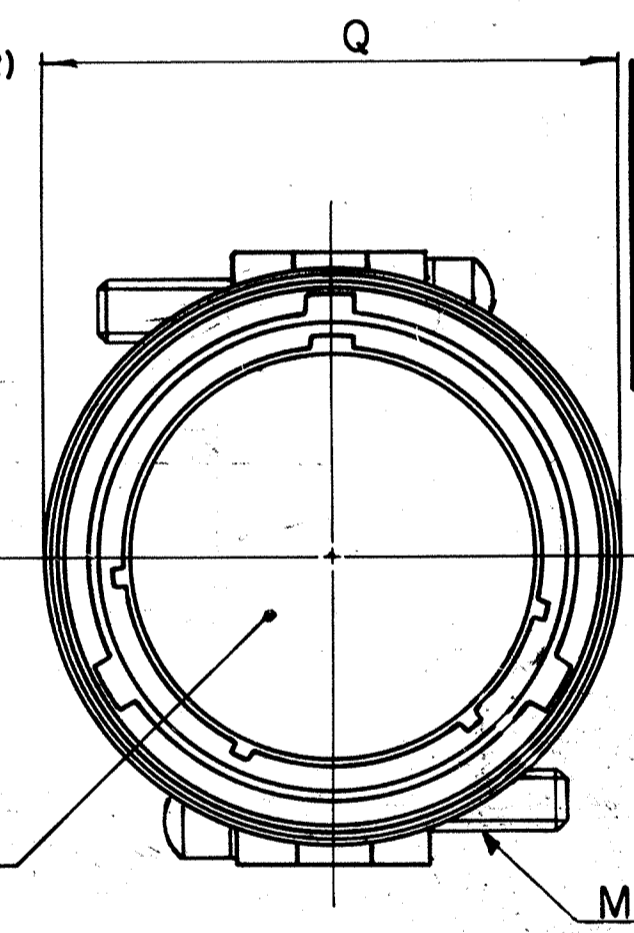
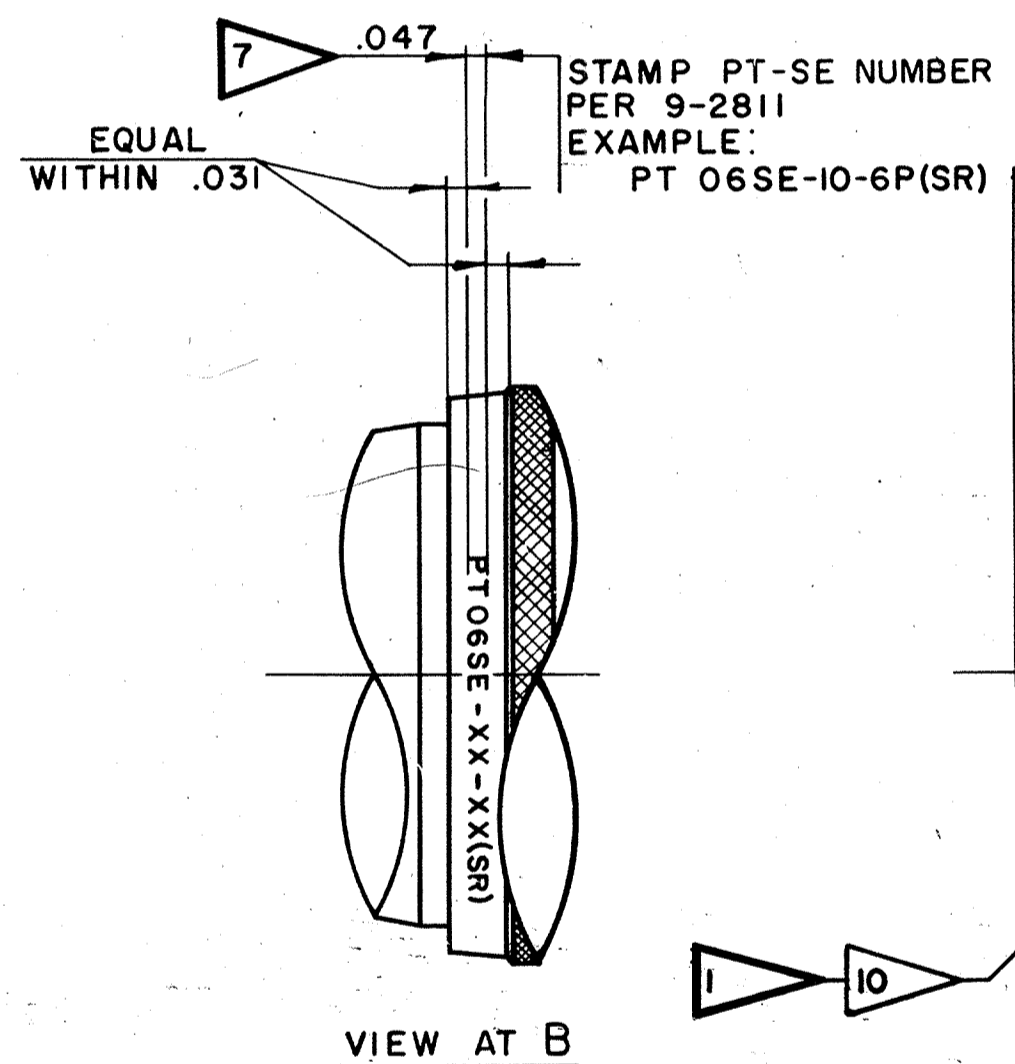
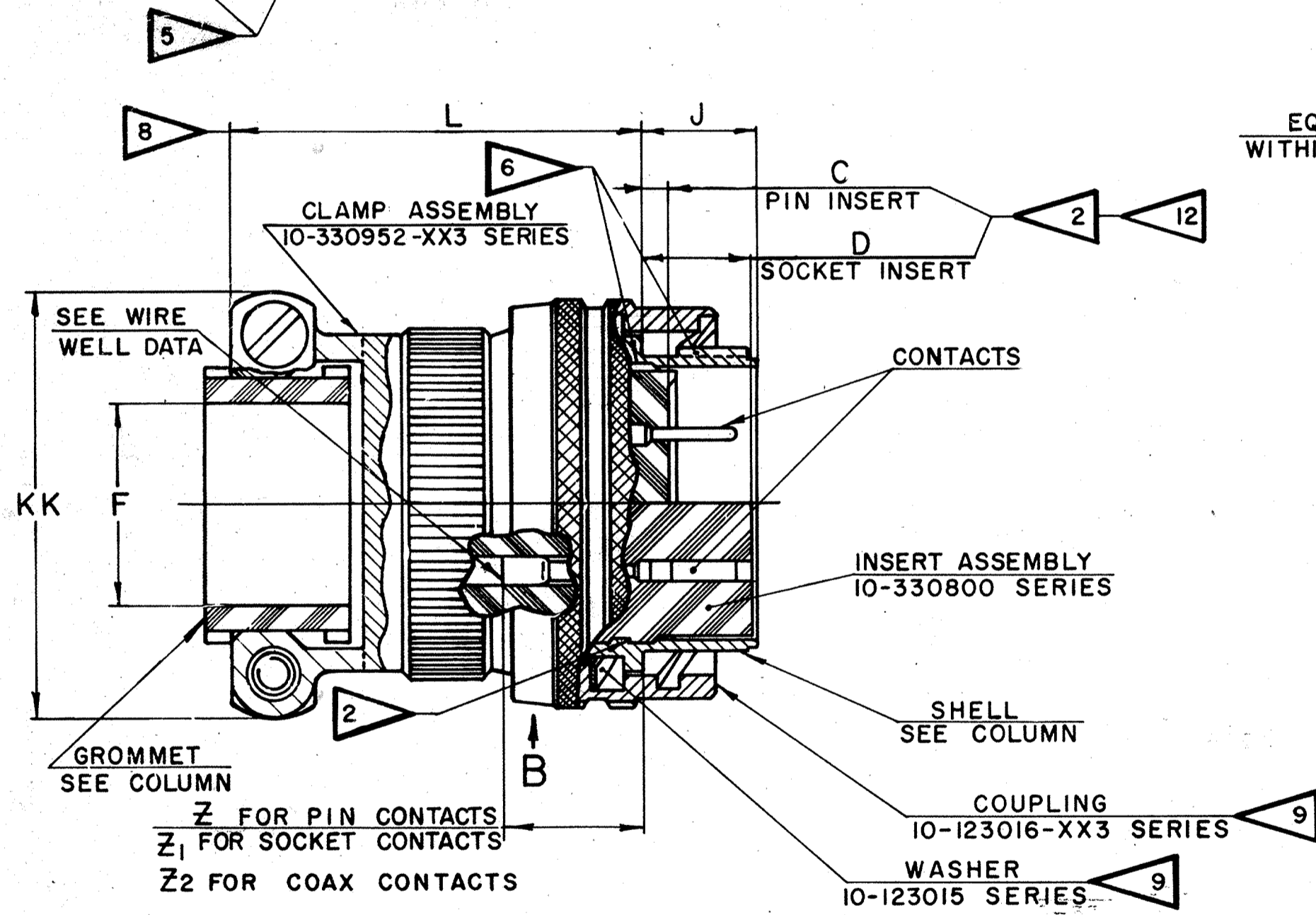


ASSEMBLY NUMBER	PT-SE NUMBER	DETAILS		DIMENSIONS											
		SHELL	GROMMET	C	D	F	J	L	M	Q	Z	Z <sub>1</sub>	KK	Z <sub>2</sub>	
				+020 -000	+020 -000	DIA		MAX	THREAD REF CLASS 2	DIA +000 -047	±045	±045	+000 -047	MAX	
71-332606-	06SE-6-	(SR)	NOT AVAILABLE												
71-332608-	-8-	10-330906-83	10-36565-101	.030	.337	.125	.353	1.547	6-32UNC	.734	.640	.579	.781	.875	
71-332610-	-10-	-103	-122			.188				.844			.844		
71-332612-	-12-	-123	-143			.312				1.016			.969		
71-332614-	-14-	-143	-163			.375				1.141			1.094		
71-332616-	-16-	-163	-183			.500		1.625		1.266			1.156		
71-332618-	-18-	-183	-203			.625		1.625	8-32UNC	1.375			1.406		
71-332620-	-20-	-203	-203	.092	.399	.625	.415	1.672		1.516	.578	.517	1.406	.812	
71-332622-	-22-	-223	-244			.750		1.672		1.641			1.594		
71-332624-	-24-	-243	-232			.800		1.734		1.761			1.688		
71-332625/50				NOT AVAILABLE											

REL. NO. 36508-358		REVISIONS			COMM. REC.
CHG. NO.	SYM.	DESCRIPTION	DATE	APPROVAL	
37753-3	1	REDRAWN BY E. MICHEL; WAS SAME SIZE 9-3836-1 (ASSY SPEC); ADD -24 & REL.-24 & DATA, NOTE 14, REV. & RELOC. GROM. COL.	7-14-60	<i>Schlad</i>	
38311-12	2	REV NOTE 11	8-18-61	<i>Schlad</i>	
38525-118	3	REVERSED LOCATION OF CLAMP BAR SCREWS	11-2-61	<i>Schlad</i>	
39070-2	4	RELOC AND REV C & D DIM	1-4-62	<i>Schlad</i>	
39606-7	A <sub>1</sub>	WAS 10-330910-XX3 SERIES (CLAMP ASSY); L ± 0.031; REV L COL	4-16-62	<i>Schlad</i>	
39525-309	A <sub>2</sub>	ADDED Z <sub>2</sub> DIM & Z <sub>2</sub> MAX COL	1-22-63	<i>Schlad</i>	
56525-56	A <sub>3</sub>	REV C COL	12-2-74	<i>Schlad</i>	
56500-63	A <sub>4</sub>	ADD & REL -8 & DATA	2-21-75	<i>Schlad</i>	
	B	(CL 11) REM. NOTE 11; FLAG ECN: 74403-1	7-19-83	<i>Schlad</i>	



ACCESSORIES (NOT PART OF STANDARD ASSEMBLY)

SEE DRAWING 10-150000

- NOTES:
- FOR CONTACT ARRANGEMENTS, SEE DRAWINGS L-15206-( ) THRU L-15250-( ).
  - DIMENSIONS MUST BE MAINTAINED WHEN INSERTS ARE PRESSED FIRMLY AGAINST INDICATED SHOULDER
  - MATES WITH RECEPTACLE 71-332006/50 & OTHERS
  - FOR COMPONENT PART NUMBERS OF DESIRED ARRANGEMENT, SEE APPLICABLE PARTS LIST (PL).
  - TO COMPLETE ASSY NO. & PT-SE NO., ADD APPLICABLE INSERT ARRANGEMENT SUFFIX TO BASE NUMBERS LISTED ABOVE PER 9-2437-1.
  - VERTICAL CENTERLINES OF INSERT ARRANGEMENT AND SHELL POLARIZING KEY MUST BE WITHIN .005 OF INDICATED ROTATION PER 9-2437-1.
  - SEE WORK ORDER FOR PERMISSIBLE ADDITIONAL OR ALTERNATE STAMPING.
  - DIMENSION INDICATES FINAL INSTALLATION, FOR STORAGE & SHIPPING, SHELL & CLAMP ASSEMBLY MUST BE LOOSELY COUPLED.
  - INSERT ASSEMBLY IS NOT REMOVABLE.
  - COUPLING SLOTS & WASHER TO BE LUBRICATED PER 9-3502.
  - INSERT LOCATING DIMENSIONS APPLY BEFORE ASSEMBLY OF CONTACTS.
  - FOR FINAL INSTALLATION, CONTACTS MUST BE ASSEMBLED INTO ALL INSERT HOLES. ALL UNUSED GROMMET HOLES MUST BE FILLED WITH APPROPRIATE SEALING PLUG 10-101033.
  - UNITS ILLUSTRATED MEET THE MATERIAL AND FINISH REQUIREMENTS OF MIL-C-26482.

COAXIAL WELL DATA		WIRE WELL DATA			
CONTACT SIZE	8	CONTACT SIZE	20	16	
CABLE TYPE	RG-195/U RG-180/U	CONDUCTOR WELL DIA	.048 +002 -000	.066 +002 -000	
		CONDUCTOR WELL DEPTH	.184 +037 -000	.234 +031 -000	
		INSULATION WELL DIA	.091 +002 -000	NOT AVAILABLE	
		INSULATION WELL DEPTH	.077 +006 -000	NOT AVAILABLE	
TEST PROCESS SPEC 9-4039-1 ASSY 9-3836-2, 9-2437-1 9-3502, 9-2811		LIST OF MATERIAL			
UNLESS OTHERWISE SPECIFIED		ABBREVIATIONS & SYMBOLS (MNC)-MAXIMUM MATERIAL CONDITION (TP)-TRUE POSITION - REF NOTE			
1. TOLERANCES: LINEAR .000 ± .010, .00 ± .02, .0 ± .1 ANGULAR ± 2°		ORIG ENG JOB NO. 99G			
2. ALL LOCATION TOLERANCES APPLY AT MAXIMUM MATERIAL CONDITION (MNC).		DRAWN: EICHORN DATE: 6-9-60			
3. RADIUS FILLETS & BREAK EDGES .005-.020.		CHECKED: M.ero DATE: 12-19-60			
4. CONCENTRICITY: .015 TIR REGARDLESS OF SIZE.		MATERIAL:			
FOR DRAWING INTERPRETATION SEE SPEC 9-3500		STD'S: 12-19-60			
MATERIAL SPEC		CH DR: 12-19-60			
HEAT TREAT SPEC		APP'D: E. Barnhart 12/19/60			
FINISH SPEC		SCALE: NONE WT. CALC (SEE ACT. SPT) LBS REF: 71-197606/50 DRAWING SIZE: C TAB.			

**Bendix**

SCINTILLA DIVISION  
BENDIX AVIATION CORPORATION  
SIDNEY, N.Y., U.S.A.

71-332606 THRU 71-332650

CODE 77820

71-332606 THRU 71-332650