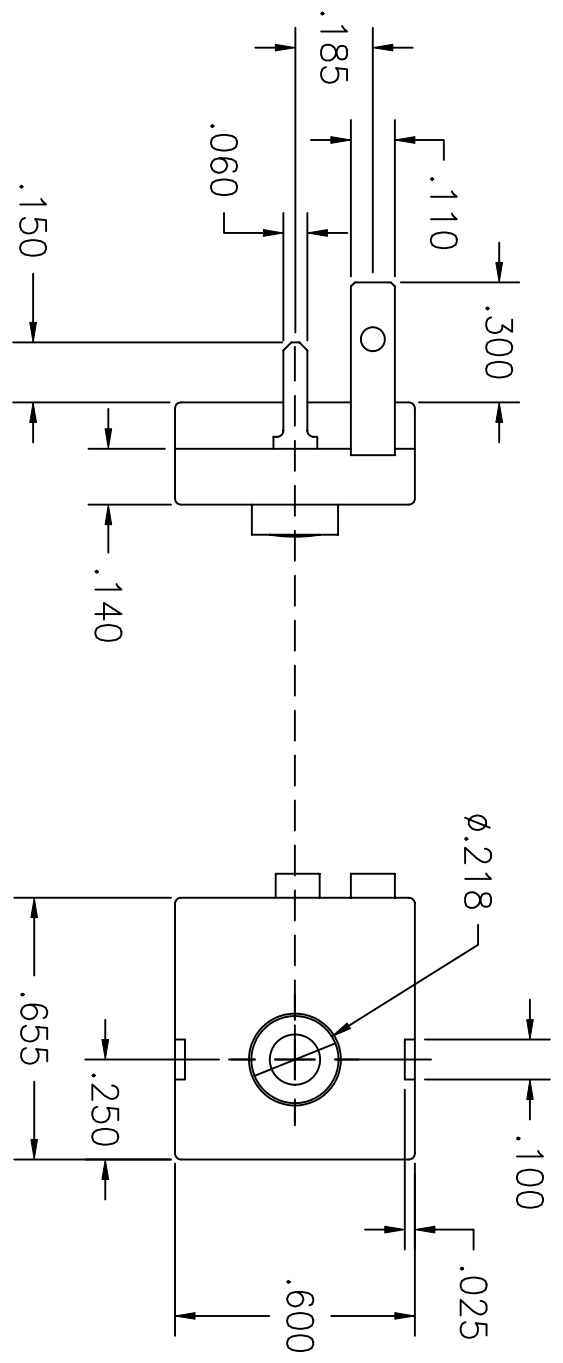
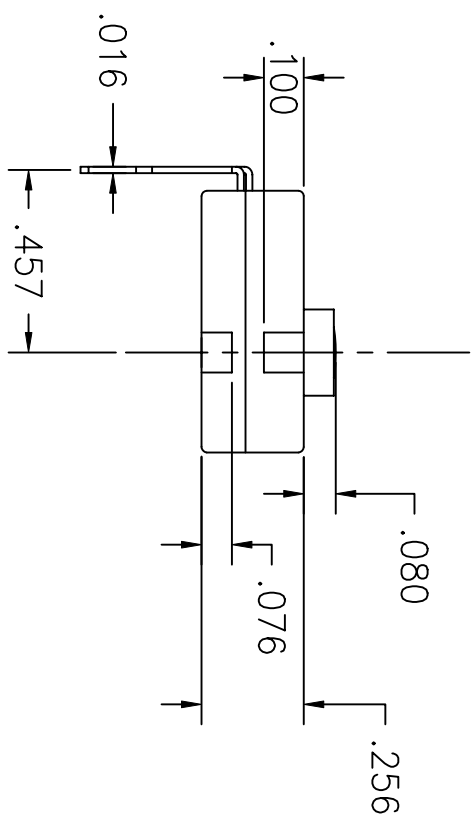


LTR	EN	DESCRIPTION	APPR	BY	DATE
A	-	INITIAL RELEASE	RB	EM	2-12-04
A1	-	CHG'D CUST PN WAS 563-0005-A	RB	EM	2-24-04



JUDCO INVENTORY NO. 40-1801-03
 SWITCH TYPE: PUSH-ON, PUSH-OFF,
 J-987-1P

CUSTOMER: DIGI KEY
 CUST. PN: 514 PB-ND
 APPROVED BY: _____
 DATE: _____



This document embodies a product, component, and/or design proprietary to JUDCO MANUFACTURING INC., and which is protected either as a trade secret, by U.S. Patent, or by copyright. It may not be used in any way without written express consent of JUDCO MANUFACTURING INC.

DIMENSIONS IN INCHES
 DIMENSIONS ARE REFERENCE

DRAWN: EM	02-12-04
APPR: KJ	02-12-04
DWG. NO. 1415-572	
SHEET 1 OF 1	

HARBOR CITY CALIFORNIA
 OUTLINE
 J-987-1P