

MATERIAL NUMBER	# OF COLUMNS	# OF DIFF PAIR	DIM 'A' MAX	DIM 'B'	PTH ϕ
76500-#8**	8	32	15.20	13.30	0.46+0.05
76500-#1**	10	40	19.00	17.10	0.46+0.05
76500-#6**	16	64	30.40	28.50	0.46+0.05
76500-#8**	8	32	15.20	13.30	0.39+0.05
76500-#1**	10	40	19.00	17.10	0.39+0.05
76500-#6**	16	64	30.40	28.50	0.39+0.05

76500-****

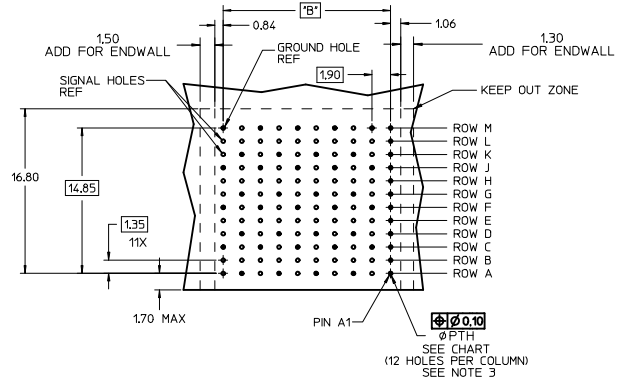
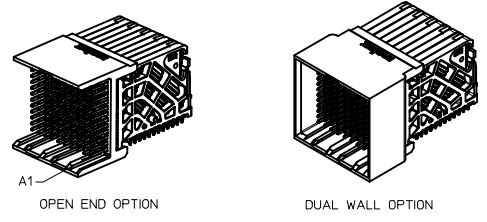
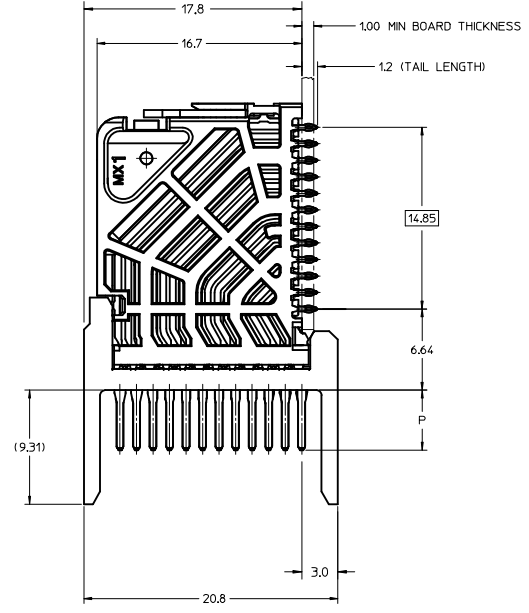
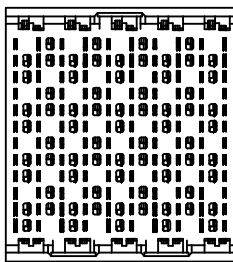
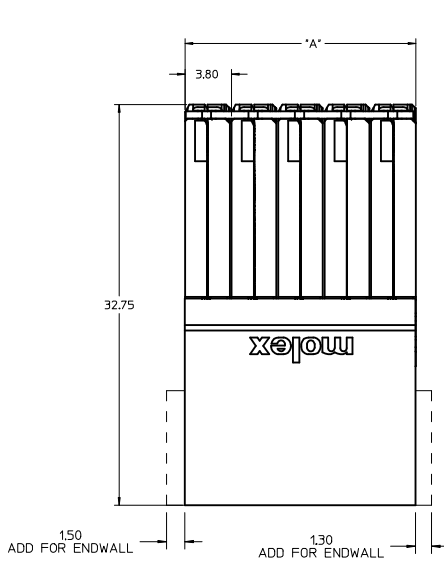
MODULE TYPE
1 = UNGUIDED, LEAD-FREE

OF COLUMNS
1 = 10 COLUMNS
6 = 16 COLUMNS
8 = 8 COLUMNS

PIN LENGTH (P)
4 = 4.90 (0.46 PTH)
5 = 5.50 (0.46 PTH)
7 = 4.90 (0.39 PTH)
8 = 5.50 (0.39 PTH)

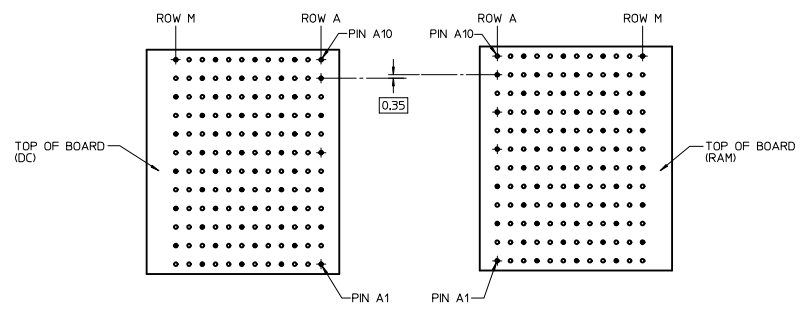
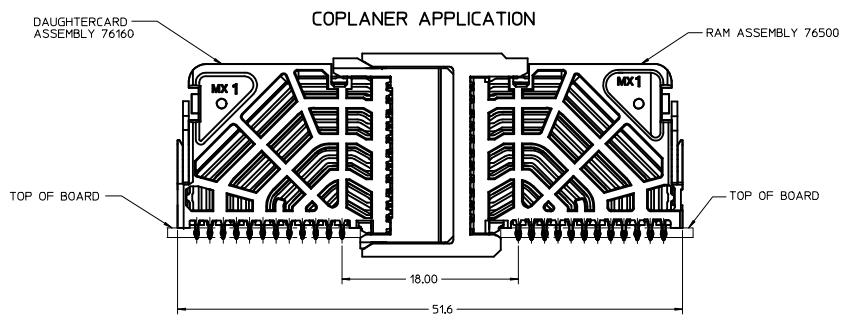
END WALL OPTIONS
0 = OPEN ENDS
1 = LEFT ENDWALL
2 = DUAL ENDWALL
3 = RIGHT ENDWALL

- NOTES:
1. MATERIALS: HOUSING - LIQUID CRYSTAL POLYMER (LCP), GLASS-FILLED, UL94V-0
TERMINALS - HIGH PERFORMANCE COPPER ALLOY
 2. FINISH: 30NM SELECTIVE GOLD IN CONTACT AREA, SELECTIVE TIN ON PCB TAILS, NICKEL OVERALL.
 3. REFER TO MOLEX PRODUCT SPECIFICATION PS-76060-999 FOR PERFORMANCE SPECIFICATIONS AND ADDITIONAL PCB INFORMATION.
 4. EACH SIGNAL WAFER CONTAINS 2 COLUMNS OF TERMINALS.
 5. PRODUCT IS PACKAGED PER PK-70873-041.
 6. THIS PART CONFORMS TO CLASS B REQUIREMENTS OF COSMETIC SPEC PS-45499-002.
 7. REFER TO MOLEX SALES DRAWING SD-76160-001 FOR THE MATING RECEPTACLES.
 8. REFER TO MOLEX PCB ROUTING GUIDE AS-76060-990 FOR ANTIPAD AND ROUTING RECOMMENDATIONS.



RAM HOLE PATTERN (CONNECTOR SIDE)

UPD DRAWING/PCB LAYOUT DEC NO: LCP2014-4579 DRAWN: GONZALEZ01 2014/05/28 CHKD: CHYK APPR: TEL0 DATE: 2015/01/30	QUALITY SYMBOLS	GENERAL TOLERANCES (UNLESS SPECIFIED)	DIMENSION STYLE	SCALE	DESIGN UNITS	THIRD ANGLE PROJECTION
	$\nabla=0$	4 PLACES ± mm ± INCH	MM ONLY	5:1	METRIC	
	$\nabla=0$	3 PLACES ± 0.13 ± 0.005				
	$\nabla=0$	2 PLACES ± 0.25 ± 0.010				
		ANGULAR ±1/2°				
		DRAFT WHERE APPLICABLE MUST REMAIN WITHIN DIMENSIONS				
			MATERIAL NO.	DOCUMENT NO.		
			SEE TABLE	SD-76500-001		
			SIZE D			
			THIS DRAWING CONTAINS INFORMATION THAT IS PROPRIETARY TO MOLEX INCORPORATED AND SHOULD NOT BE USED WITHOUT WRITTEN PERMISSION			



COPLANER MATED SIGNAL PATHS
 DC PIN A10-----RAM PIN A10
 DC PIN A1-----RAM PIN A1

SEE SHEET 1 SEC NO: UCP2014-4979 DRAWN: GONZALEZ01_2014/05/28 CHKD: APPR: CTELO 2015/01/30 REV	QUALITY SYMBOLS	GENERAL TOLERANCES (UNLESS SPECIFIED)	DIMENSION STYLE	SCALE	DESIGN UNITS	THIRD ANGLE PROJECTION
	▽=0	mm	MM ONLY	4:1	METRIC	
	▽=0	INCH				
	▽=0	4 PLACES ±.005	DRAWN BY	DATE	TITLE	
	▽=0	3 PLACES ±.010	JLAURX	2008/11/24	IMPACT 4 PAIR RAM UNGUIDED SIGNAL MODULE SALES DRAWING	
	2 PLACES ±0.13	JLAURX	2008/11/25	molex		
	1 PLACE ±0.25	JLAURX	2008/11/26	DOCUMENT NO. SD-76500-001		
	0 PLACE			SHEET NO. 2 OF 2		
	ANGULAR ±1/2°	THIS DRAWING CONTAINS INFORMATION THAT IS PROPRIETARY TO MOLEX INCORPORATED AND SHOULD NOT BE USED WITHOUT WRITTEN PERMISSION				
	DRAFT WHERE APPLICABLE MUST REMAIN WITHIN DIMENSIONS					