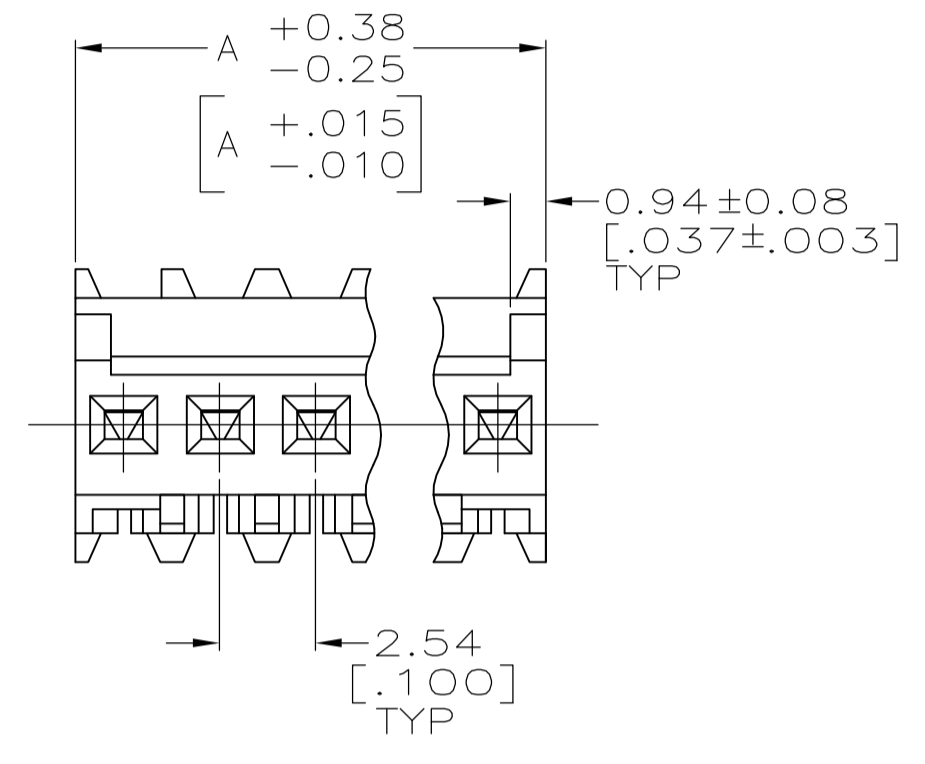
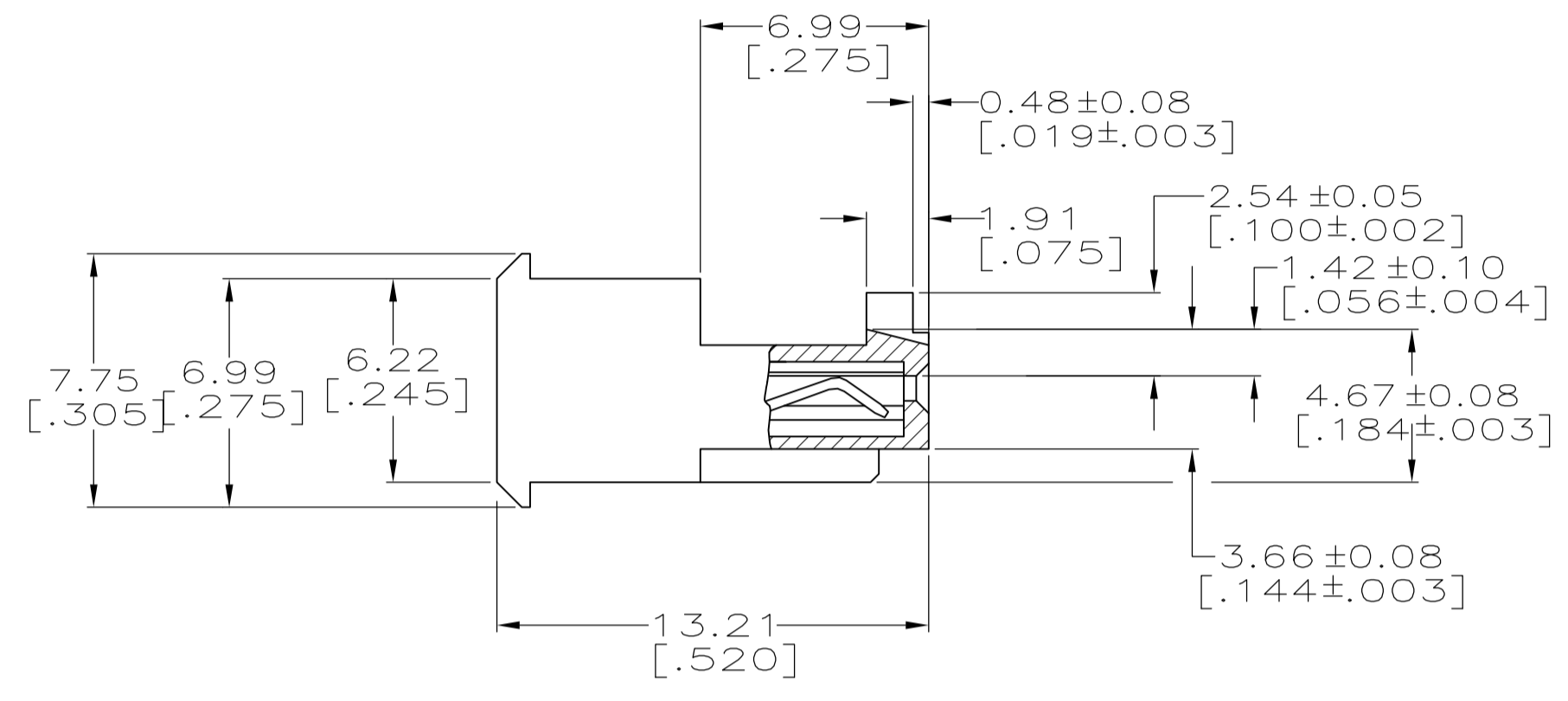
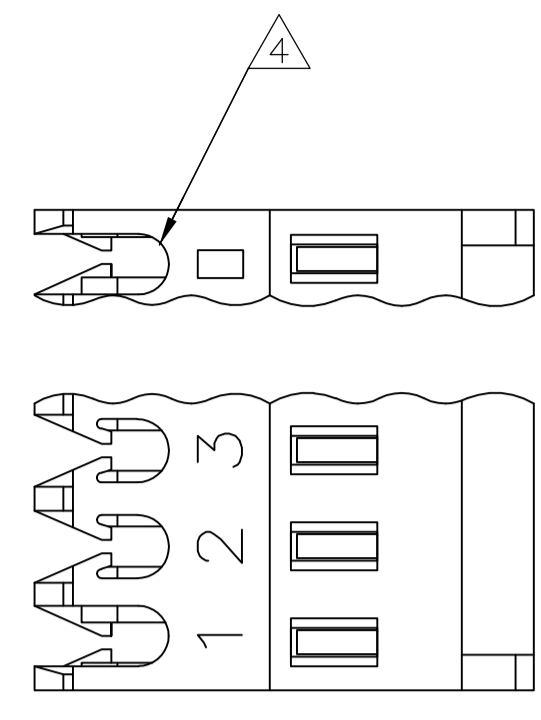


LOC		DIST		REVISIONS			
CM	00	REV	DATE	BY	APPV		
E		REVISED PER ECO-12-007595	03AUG12	KH	SM		



- 1 MATERIAL: CONNECTOR-NYLON UL94V-2. CONTACTS-0.30 [0.012] THICK COPPER ALLOY 0.00038 [0.000015] GOLD OR 0.00038 [0.000015] TOTAL GOLD FLASH OVER PALLADIUM NICKEL, PER TE CONNECTIVITY'S DISCRETION, IN CONTACT AREA WITH BRIGHT TIN-LEAD FOR 641190-2 THRU 2-641190-8, MATTE WHISKER MITIGATED TIN FOR 3-641190-2 THRU 5-641190-8 OVER NICKEL UNDERPLATE.
- 2 CONTACTS ACCEPT 22 AWG WIRE WITH 1.52 [0.060] MAX INSULATION DIAMETER.
- 3 CONTACTS MUST ACCEPT 0.64 ± 0.03 [0.025 ± 0.001] SQUARE POST AND REMAIN LOCKED IN POSITION.
- 4 IDENTIFICATION NUMBER FOR LAST CIRCUIT MAY NOT APPEAR ON ALL ASSEMBLIES.
- 5 DIMENSIONS IN BRACKETS ARE IN INCHES.
- 6 HOUSING FEATURES ARE: FEED THRU WITH LOCKING RAMP AND WITH POLARIZING TAB.
- 7 OBSOLETE PARTS: OBSOLETE CIS STREAMLINING PER D.RENAUD/D.SINISI
- 8 RED COLOR STRIPE ON HOUSING (NOT SHOWN) MAY RUN DOWN BETWEEN RIBS.

DIM A	NO.OF POSN	ASSEMBLY
40.64 [1.600]	16	4-647477-6
38.10 [1.500]	15	4-647477-5
35.56 [1.400]	14	4-647477-4
33.02 [1.300]	13	4-647477-3
30.48 [1.200]	12	4-647477-2
27.94 [1.100]	11	4-647477-1
25.40 [1.000]	10	4-647477-0
22.86 [0.900]	9	3-647477-9
20.32 [0.800]	8	3-647477-8
17.78 [0.700]	7	3-647477-7
15.24 [0.600]	6	3-647477-6
12.70 [0.500]	5	3-647477-5
10.16 [0.400]	4	3-647477-4
7.62 [0.300]	3	3-647477-3
5.08 [0.200]	2	3-647477-2

- △ SUPERSEDED BY 4-647477-6
- △ SUPERSEDED BY 4-647477-5
- △ SUPERSEDED BY 4-647477-3
- △ SUPERSEDED BY 3-647477-5

DIM A	NO.OF POSN	ASSEMBLY
40.64 [1.600]	16	1-647477-6
38.10 [1.500]	15	1-647477-5
35.56 [1.400]	14	1-647477-4
33.02 [1.300]	13	1-647477-3
30.48 [1.200]	12	1-647477-2
27.94 [1.100]	11	1-647477-1
25.40 [1.000]	10	1-647477-0
22.86 [0.900]	9	647477-9
20.32 [0.800]	8	647477-8
17.78 [0.700]	7	647477-7
15.24 [0.600]	6	647477-6
12.70 [0.500]	5	647477-5
10.16 [0.400]	4	647477-4
7.62 [0.300]	3	647477-3
5.08 [0.200]	2	647477-2

METRIC

THIS DRAWING IS A CONTROLLED DOCUMENT.

DIMENSIONS: mm [INCHES]	TOLERANCES UNLESS OTHERWISE SPECIFIED:	DIN S. HOOVER 20-DEC-2004	APPROVED D. ROSSI 20-DEC-2004	NAME	TE Connectivity
0 PLC ±	1 PLC ±	2 PLC ± 0.13 [0.005]	3 PLC ±	4 PLC ±	ANGLES ±
MATERIAL	FINISH	WEIGHT	SIZE	CAGE CODE	DRAWING NO
1	1	A1 00779	114-1019	647477	RESTRICTED TO
CUSTOMER DRAWING			SCALE	SHEET	REV
			5:1	1 OF 1	E