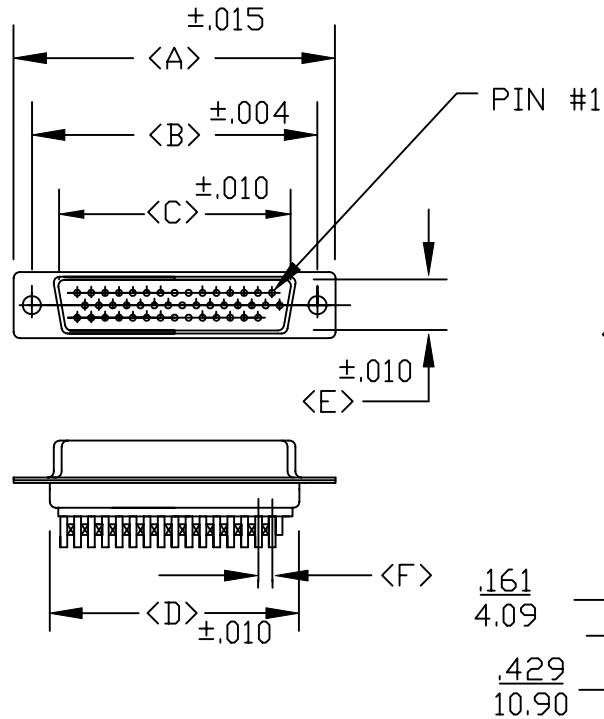
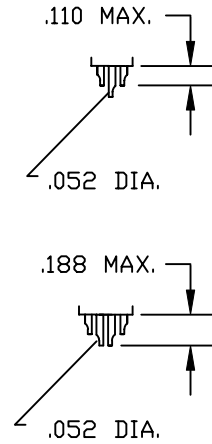


DESCRIPTION: **HIGH DENSITY FEMALE SOLDER CUP**



POS.	A	B	C	D	E	F	G
15	1.213	0.984	0.644	0.756	0.311	0.090	0.496
	30.80	24.99	16.34	19.20	7.90	2.29	12.60
26	1.541	1.312	0.966	1.091	0.311	0.090	0.496
	39.15	33.32	24.53	27.70	7.90	2.29	12.60
44	2.087	1.852	1.512	1.618	0.311	0.090	0.496
	53.00	47.04	38.40	41.10	7.90	2.29	12.60
62	2.728	2.500	2.156	2.256	0.311	0.095	0.496
	69.30	63.50	54.76	57.30	7.90	2.41	12.60
78	2.079	2.406	2.057	2.169	0.429	0.095	0.606
	52.81	61.00	52.26	55.10	10.90	2.41	15.39



180-XXX-202-XX1

SERIES _____
 POSITIONS _____
 015
 026
 044
 062
 078
 GENDER _____
 1 = MALE
 2 = FEMALE
 TERMINATION _____
 0 = SOLDER CUP
 SHELL PLATING _____
 2 = TIN PLATED
 HARDWARE OPTIONS _____
 00 = NO HARDWARE
 01 = .098" 4-40 CLINCH NUT (BOARD SIDE)
 02 = .250" 4-40 CLINCH NUT (BOARD SIDE)
 03 = .250" 4-40 CLINCH NUT (MATING SIDE)
 91 = .225" 4-40 SPACER/BOARD LOCK
 PLATING OPTIONS _____
 1 = GOLD FLASH


ELECTRICALS:

CURRENT RATING: 2 AMPS
 CONTACT RESISTANCE: 15 mOHMS MAX.
 INSULATOR RESISTANCE: 1000MOHMS MIN.
 VOLTAGE: 500V FOR 1 MINUTE
 TEMPERATURE: -50° TO +100°

MATERIALS:

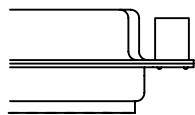
SHELL: STEEL, TIN PLATED
 INSULATOR: PBT - BLACK (UL-94-VO)

NOTE: WILL ACCEPT UP TO 24 AWG WIRE

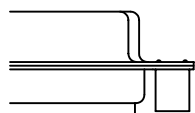
	THESE DRAWINGS AND SPECIFICATIONS ARE THE PROPERTY OF NorComp AND SHALL NOT BE REPRODUCED, COPIED OR USED AS THE BASIS FOR THE MANUFACTURE OR SALE OF APPARATUS WITHOUT WRITTEN PERMISSION.		DRAWN: PAM JENKINS	DATE: 8-12-98
			CHECKED:	DATE:
<h1>NorComp</h1>		SCALE:	SHEET OF	REV 3
		DWG NO. 180-XXX-202-XX1		

DESCRIPTION: CLINCH NUT HARDWARE

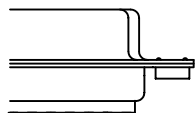
ALL CLINCH-NUTS ARE 4-40 INTERNAL THREADS



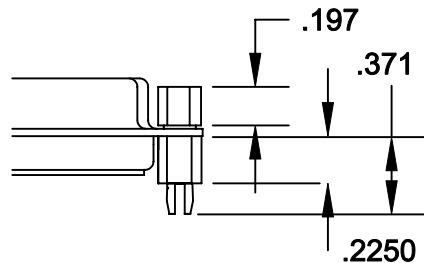
03X..... .250" (MATING SIDE) - CN8



02X250" (BOARD SIDE) - CN2




01X098" (BOARD SIDE) - CN1



91X225" (BOARD SIDE) - .197 MATING SIDE - CN10/SFS0440

NOTE: 4-40 FEMALE SCREW LOCK IS REMOVABLE

	THESE DRAWINGS AND SPECIFICATIONS ARE THE PROPERTY OF NorComp AND SHALL NOT BE REPRODUCED, COPIED OR USED AS THE BASIS FOR THE MANUFACTURE OF SALE OF APPARATUS WITHOUT WRITTEN PERMISSION.		DRAWN: WAYNE ROBBINS	DATE: 8-23-98
	NorComp		CHECKED: PAM JENKINS	DATE: 8-24-98
SCALE:			SHEET 1 OF 1	REV 1
DWG NO.			CLINCH-NUT OPTIONS	