

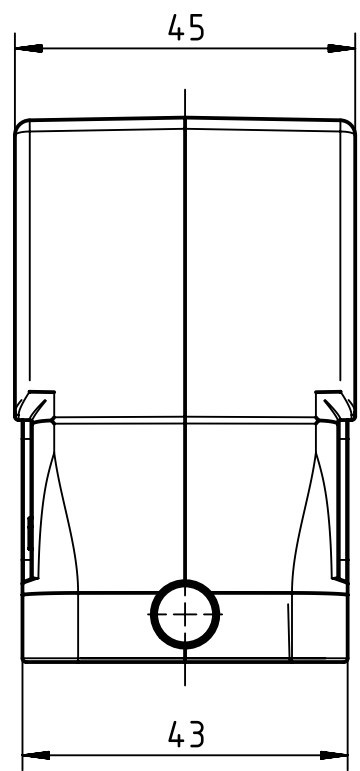
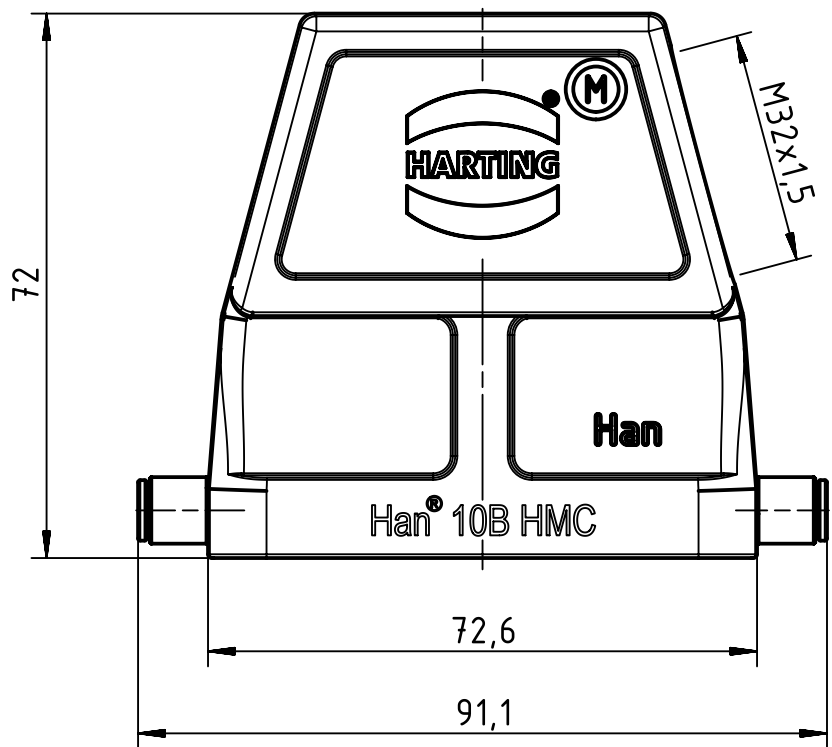
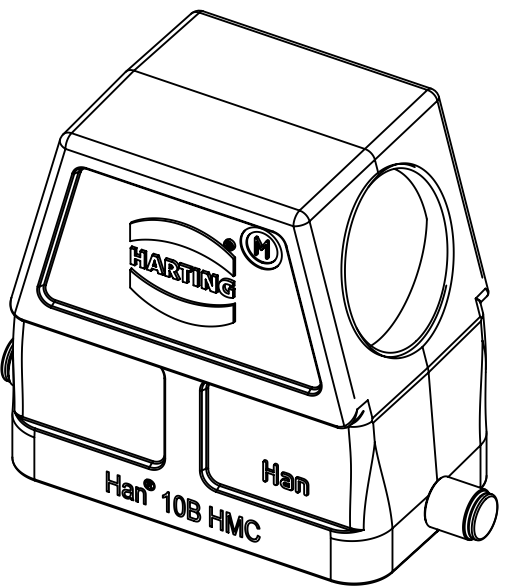
1 2 3 4 5 6

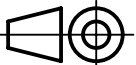

A

B

C

D



| | | | | | |
|--|----------------------|----------------|-----------------|------------|--|
|  All Dimensions in mm Original Size DIN A4 | Scale | Free size tol. | | | Ref. |
| | 1:1 | | | | Sub. |
|  All rights reserved Department EL PD - DE | Created by | Inspected by | Standardisation | Date | State |
| | SCHULZI | BERGHORN | TIEMANNA | 2014-07-21 | Final Release |
| HARTING Electric GmbH & Co. KG D-32339 Espelkamp | Title | | | | Doc-Key / ECM-Nr. 100520546/UGD/002/B 500000061817 |
| | Han 10B-HMC-gs-R-M32 | | | | |
| Type | | Number | | Rev. | Page |
| TB | | 19 30 210 0547 | | B | 1/1 |