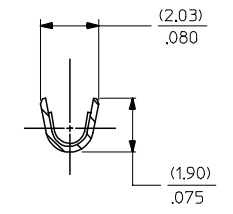
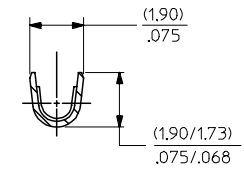
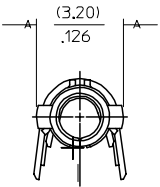
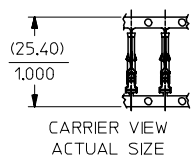


PART NO. ENG. NO.

| | | |
|------------|----------------|----------|
| 02-06-1131 | 1855-(P901) | |
| 02-06-1132 | 1855-(P901)IL | |
| 02-06-5137 | 1855-(P591) | OBSOLETE |
| 02-06-5136 | 1855-(P591)IL | OBSOLETE |
| 02-06-5138 | 1855-(P561) | |
| 02-06-5139 | 1855-(P561)IL | |
| 02-06-5130 | 1855-(P550) | |
| 02-06-5135 | 1855-(P550)IL | |
| 02-06-5147 | 1855-(P228) | |
| 02-06-5148 | 1855-(P228)IL | |
| 02-06-1141 | 1855-1(P901) | |
| NOT TOOLED | 1855-1(P901)IL | |
| 02-06-1143 | 1855-(P901)11 | |

OBSOLETE
OBSOLETE



LEGEND

1855-*(****)*

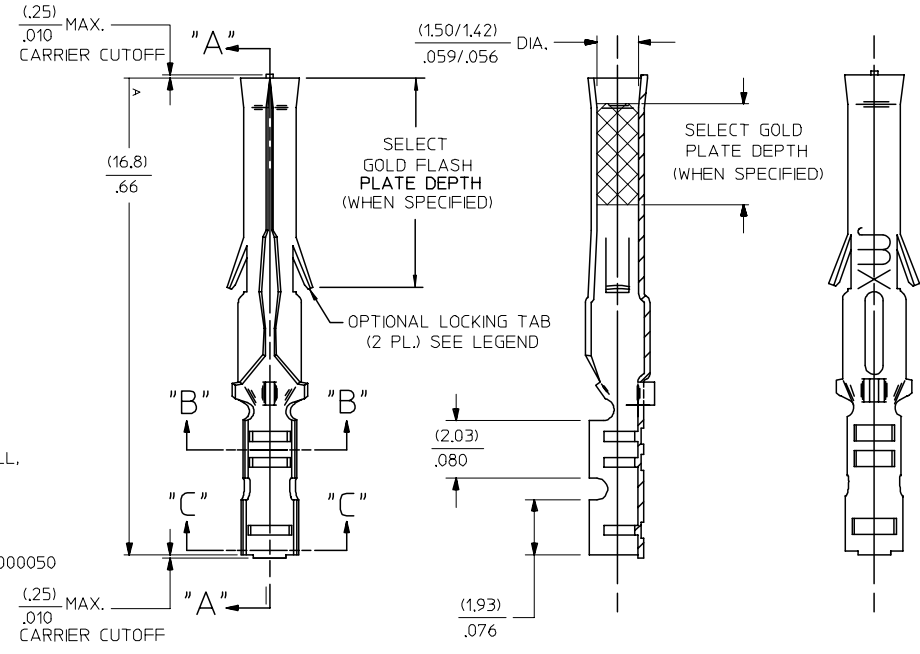
BLANK=WITH LOCKING TABS
1=WITHOUT LOCKING TABS

P=PREPLATE
BLANK=POSTPLATE

FORM
BLANK=CHAIN
1=CHAIN WITH INTERLEAF
PAPER ON REEL.
L=LOOSE
FINISH CODE

NOTES:

- MATERIAL: BRASS
- FINISHES:
 - 901 HOT TIN DIP (.00051)/.000020 MIN.
 - * 228 SELECT GOLD PLATE (.00075)/.000030 MIN. IN CONTACT AREA, SELECT TIN (.00250)/.000100 MIN. IN CRIMP AREA OVER (.00125)/.000050 MIN. NICKEL OVERALL, WITH .000010/(.00025) MAX. SELECT GOLD FLASH IN AREA INDICATED.
 - 561 SELECT GOLD PLATE (.00076)/.000030 MIN. IN CONTACT AREA, (.00127)/.000050 MIN. NICKEL OVERALL.
 - 591 SELECT GOLD PLATE (.00127)/.000050 MIN. IN CONTACT AREA, OVER (.00127)/.000050 MIN. NICKEL OVERALL WITH (.00025)/.000010 MAX. GOLD FLASH OVERALL.
 - 550 SELECT GOLD PLATE (.00038)/.000015 MIN. IN CONTACT AREA, OVER (.00076)/.000030 MIN. NICKLE OVERALL WITH (.00025)/.000010 MAX. GOLD FLASH OVERALL.
- THE PRIMARY SHIPPING CARTON WILL BE LABELED, *COMPLIANT TO RoHS DIRECTIVE 2002/95/EC AND ELV ANNEX II OF DIRECTIVE 2000/53/EC THIS LABEL MAY CONTAIN PRODUCT WITH TIN-LEAD.
- PRODUCT SPECIFICATION: PS-02-0-6
- PACKAGE INFORMATION: NOT AVAILABLE
- TERMINAL FOR USE WITH (1.57)/.062 DIA. SERIES HOUSINGS AND WILL ACCEPT 24 THRU 30 AWG WIRE WITH (1.02/2.29)/.040/.090 INSULATION DIAMETER.



| | |
|-----|--|
| AP | REVISE Sn/Pb PLATE REDRAWN TO ME10 UCR2004-2097 5/07/04 RHOLTS |
| AN | OBSOLETE P/N UCR2002-0270 COMERCI 01/9/28 |
| AM1 | OBSOLETE -P575J & -P575AL ECR UG 0558 GC3/15/95 RW |
| AM | REV. AND REDRAWN PER ECR 10372 GEP 6-17-87 RW |

| | | | | | | |
|---|------------------------|--|-----------------------|---|---|--------------------|
| REV. MATL. SPEC/STAT TO ME10 EC NO: UICP2004-2097 DRAWN/RHOLTS 2004/05/14 CHKD: 2004/05/14 APPR: F SMITH 2004/05/18 | QUALITY SYMBOLS | GENERAL TOLERANCES (UNLESS SPECIFIED) | SCALE 8:1 | DESIGN UNITS INCH | THIRD ANGLE PROJECTION | REVISE ON CAD ONLY |
| | ▽ = 0 ▽ = 0 | mm INCH | DIMENSION STYLE IN/MM | | TITLE CRIMP TERMINAL, FEMALE (1.57)/.062 DIA., BRASS FOR 24 THRU 30 GA. WIRE | |
| | | 4 PLACES ± .005 ± .005 | DRAWN BY GEP | DATE 1987/09/17 | | |
| | | 3 PLACES ± .005 ± .01 | CHECKED BY RW | DATE 1987/09/17 | | |
| | 2 PLACES ± 0.25 ± .014 | APPROVED BY RAS | DATE 1987/09/17 | MATERIAL NO. SEE CHART | DOCUMENT NO. SD-1855-* | SHEET NO. 1 OF 1 |
| | 1 PLACE ± 0.35 ± .005 | DRAFT WHERE APPLICABLE MUST REMAIN WITHIN DIMENSIONS | | THIS DRAWING CONTAINS INFORMATION THAT IS PROPRIETARY TO MOLEX INCORPORATED AND SHOULD NOT BE USED WITHOUT WRITTEN PERMISSION | | |