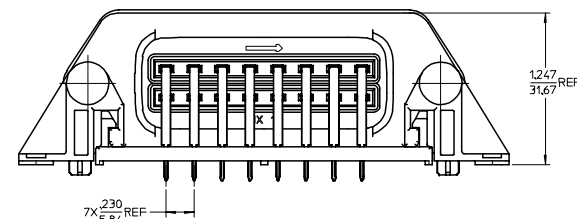
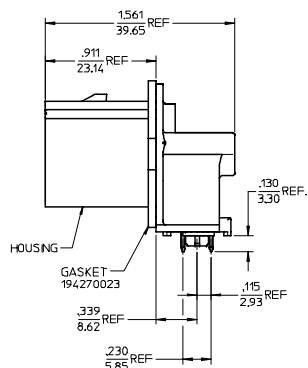
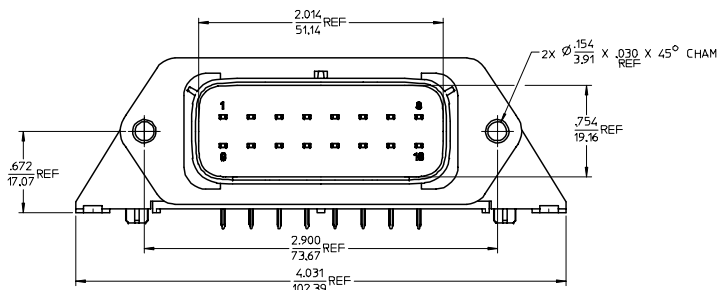
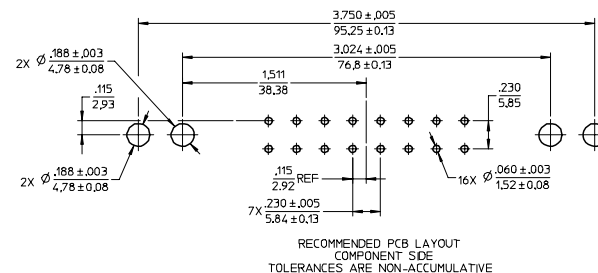
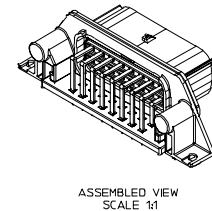
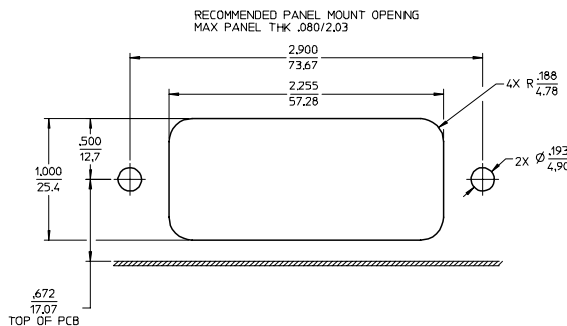
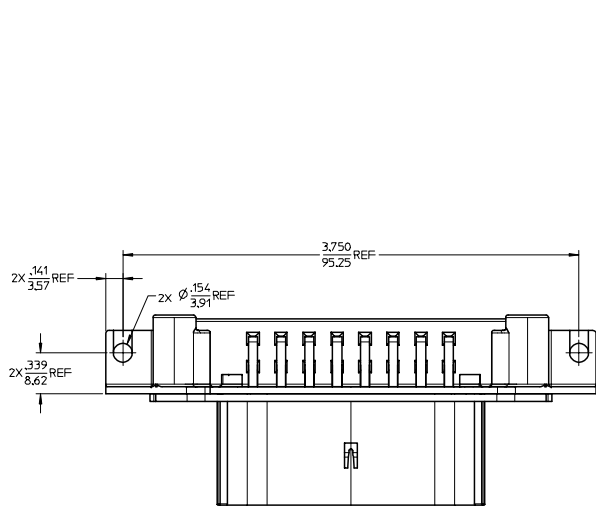


20 19 18 17 16 15 14 13 12 11 10 9 8 7 6 5 4 3 2 1



NOTES:

1. MATERIALS:
HOUSING: POLYESTER (PBT), GLASS FILLED, UL94 V-0,
COLOR: BLACK
TERMINALS: COPPER ALLOY
2. FINISHES: 1. TIN ONLY; 100µN TIN OVER 50µN NICKEL
2. TIN/GOLD; 30µN SELECT GOLD (CONTACT MATING AREA),
100µN SELECT TIN (PCB TAIL AREA) OVER 50µN NICKEL OVERALL.
3. PRODUCT SPECIFICATION: PS-19427-001.
4. PACKAGING SPECIFICATION: PK-19427-001.
5. MATES WITH: 19418 SERIES RECEPTACLE ASSEMBLIES.
6. RECOMMENDED MOUNTING HARDWARE: (2) #10 X .62/18.9 LONG PLASTIC
THREAD CUTTING SCREWS. RECOMMENDED TORQUE 15-17 IN-LBS.
SUGGESTED SOURCE: ITW SHAKEPROOF INDUSTRIAL BOSSCREW OR EQUIVALENT.

MATERIAL NO.	TERMINAL PLATING
194270101	TIN
194270117	TIN/GOLD

REVISED ETC NO: ETC2006-0028 2005/10/16 DRAWN: JPANLUK 2005/10/11 CHKD: JPANLUK 2005/10/11 APPR: RDEROSS 2005/10/11	QUALITY SYMBOLS	GENERAL TOLERANCES (UNLESS SPECIFIED)	DIMENSION STYLE	SCALE	DESIGN UNITS	THIRD ANGLE PROJECTION
	▽=0 ▽=0	4 PLACES ± .005 3 PLACES ± .015 2 PLACES ± 0.38 1 PLACE ± .005 ANGULAR ± 1°	IN/MM INCH	2:1	INCH	THIRD ANGLE PROJECTION
			DRAWN BY: DMYRICK DATE: 04/07/28 CHECKED BY: JPANLUK DATE: 04/07/28 APPROVED BY: RDEROSS DATE: 04/07/28			16 WAY RIGHT ANGLE HEADER ASSEMBLY WITH MOUNTING HOLES
		DRAFT WHERE APPLICABLE MUST REMAIN WITHIN DIMENSIONS	SEE CHART	MATERIAL NO. SD-19427-017	DOCUMENT NO. SD-19427-017	SHEET NO. 1 OF 1

MOLEX INCORPORATED

19 18 17 16 15 14 13 12 11 10 9 8 7 6 5 4 3 2 1