



REVISIONS

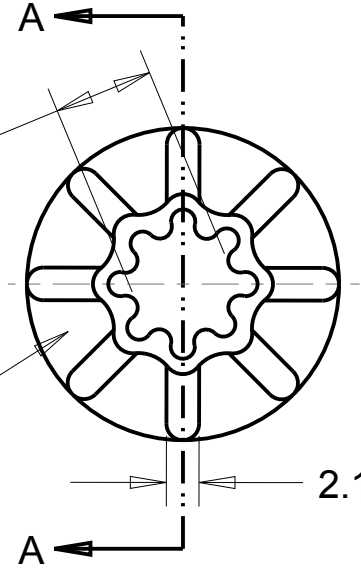
DRAWN	REV	DESCRIPTION	DATE	APPROVED
SLU	00	ORIGINAL	12-18-06	JS
KP/TC	01	UPDATED FORMAT, NOTES, TOLERANCES, ADDED WEIGHT, CAVITY LOCATION AND -X TO NAMING CONVENTION.	9-8-11	MS

D

D

\*  $\varnothing$  6.6 [.260]

CAVITY #



3.18[.125]

7.95[.313]

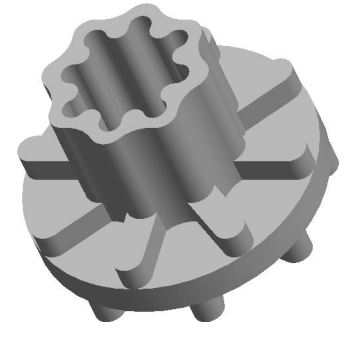
$\varnothing$  11.91[.469]

2.16[.085]

SECTION A-A

$\varnothing$  20.65[.813]

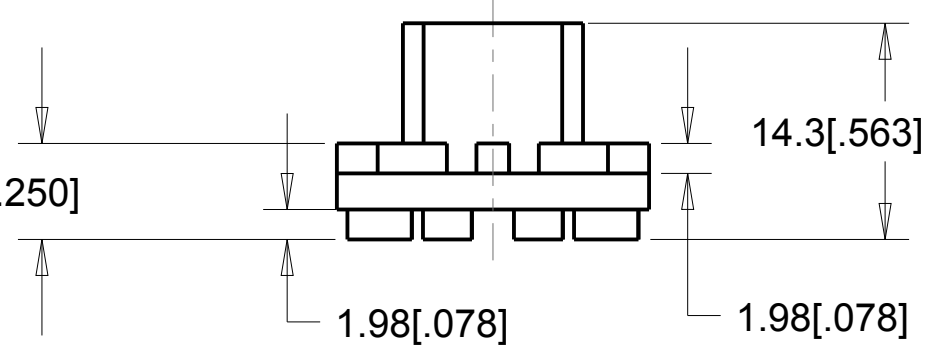
$\varnothing$  12.7[.500]



C

C

6.35[.250]



14.3[.563]

1.98[.078]

1.98[.078]

B

B

3. MAX DRAFT: 2°

2. CRITICAL DIMENSIONS SHALL HAVE Cpk VALUE >= 1.33 WITH ONGOING SPC DATA REQUIRED.

1. CRITICAL DIMENSIONS ARE MARKED WITH "\*\*".

NOTES:

A

A

B-434-V2775	V-2775
B-434-V2750	V-2750
B-434-V2725	V-2725
B-434-V2599	V-2599
B-434-V2590	V-2590
B-434-V2575	V-2575
B-434-V2550	V-2550
B-434-V2525	V-2525
B-434-V2375	V-2375
B-434-V2350	V-2350
B-434-V2325	V-2325
B-434-8	C-8002
B-434-3	C-1100
B-434-2	C-1105
B-434-1	C-1002
PART NUMBER	MATERIAL

RANGE	TOL
0 < DIM <= 2 [.078]	± 0.15 [.006]
2 [.078] < DIM <= 25 [.98]	± 0.25 [.010]
25 [.98] < DIM <= 50 [1.969]	± 0.4 [.016]
50 [1.969] < DIM	± 0.6 [.024]

UNLESS OTHERWISE SPECIFIED UNITS ARE: MM [IN] TOLERANCE FOR ANGLES: ± 0.0 °	MATERIAL: SEE TABLE ON LEFT	AEARO TECHNOLOGIES LLC * a 3M company	
	QUALITY CONTROL: MUST COMPLY WITH E-A-R SPECIALTY COMPOSITES SUPPLIER QUALITY MANUAL REQUIREMENTS	TITLE <b>GROMMET</b>	
ALLOWABLE FLASH: .12 MM [.005]	GATE: ±.25 MM [.010]	SIZE <b>B</b>	DRAWING NO. <b>B-434-X</b>
1.67 GRAM REF		NOTES: ANY FEATURE NOT DIMENSIONED IN PRINT MUST BE VISIBLY PRESENT, UTILIZE 3D CAD FOR CREATION	PAGE NO. <b>1 OF 1</b>

1

2

3

4