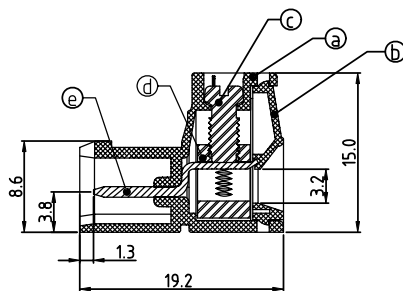
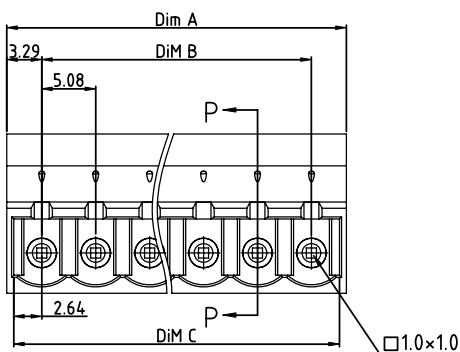
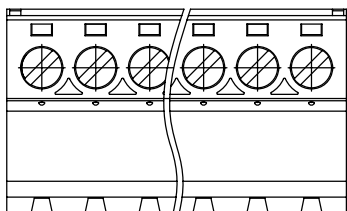


PRODUCT NUMBER	PITCH
V8xx51x000J0G	5.08 mm



Material:

- Item (a) Terminal(housing):Thermoplastic (UL94V-0)
- Item (b) Terminal (Cover):Thermoplastic (UL94V-0)
- Item (c) Terminal screw:Steel Zinc plating "-" slot type
- Item (d) Clamp:Brass(CuZn) Ni plating
- Item (e) Pin: Copper, Tin plated

Electrical cULus

- Voltage rating: 300VAC
- Current rating: 20A
- Wire range:
- Solid wire(AWG): 12-24
- Stranded wire(AWG): 12-24
- Torque: 4Lb-In
- Screw: M3
- Wire strip length: 7-8mm
- Withstanding Voltage: 1.6KV
- Operating temperature: -40°C to +115°C
- Safety Approval:

DIMENSION

Dim A	(N-1)X5.08+6.58
Dim B	(N-1)X5.08
Dim C	(N-1)X5.08+5.28

N=Number of poles

Poles	Dim A	Dim B	Dim C
2p-6p	±0.15	±0.15	+0.15 0
7p-12p	±0.20	±0.20	+0.20 0
13p-18p	±0.30	±0.30	+0.30 0
19p-24p	±0.40	±0.40	+0.40 0

PART NO.: V8 xx 51 x 0 00J0 G

Solid block	0	Color	Black (RAL9005)	RoHS compliant	(lead<4%)
No. of poles	2		Red (RAL3001/D)	In copper Alloy	
02	2 poles	3	Orange(RAL2011/P)		
03	3 poles	4	Yellow(RAL1018/A)		
...	...	5	Green(RAL6018/T)		
24	24 poles	6	Blue (RAL5015/A)		
		8	Grey(RAL7035/D)		
		9	White(RAL1102)		
		C	Green(RAL6018/U)		

mat'l. code		surface ASME Y14.5 ✓	tolerance ASME Y14.5	projection 	product family TERMINAL BLOCK
ltr	ecn no	dr	date	tolerances unless otherwise specified	title TERMINAL BLOCK PLUGGABLE PLUG
				angles 	MM
				X±1°	scale
				X.±0.5	dwg no
				X.X±0.3	sheet 1 of 1
				X.XX±0.1	size A4
				dr	FCI
				enr	EVIN ZHONG 050514
				chr	HANKE FENG 050514
				appd	SHI JUN 050514
sheet index	revision	A			type CUSTOMER Drawing
	sheet	1			