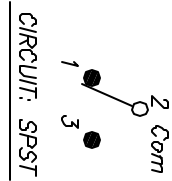


RECOMMENDED PCB LAYOUT

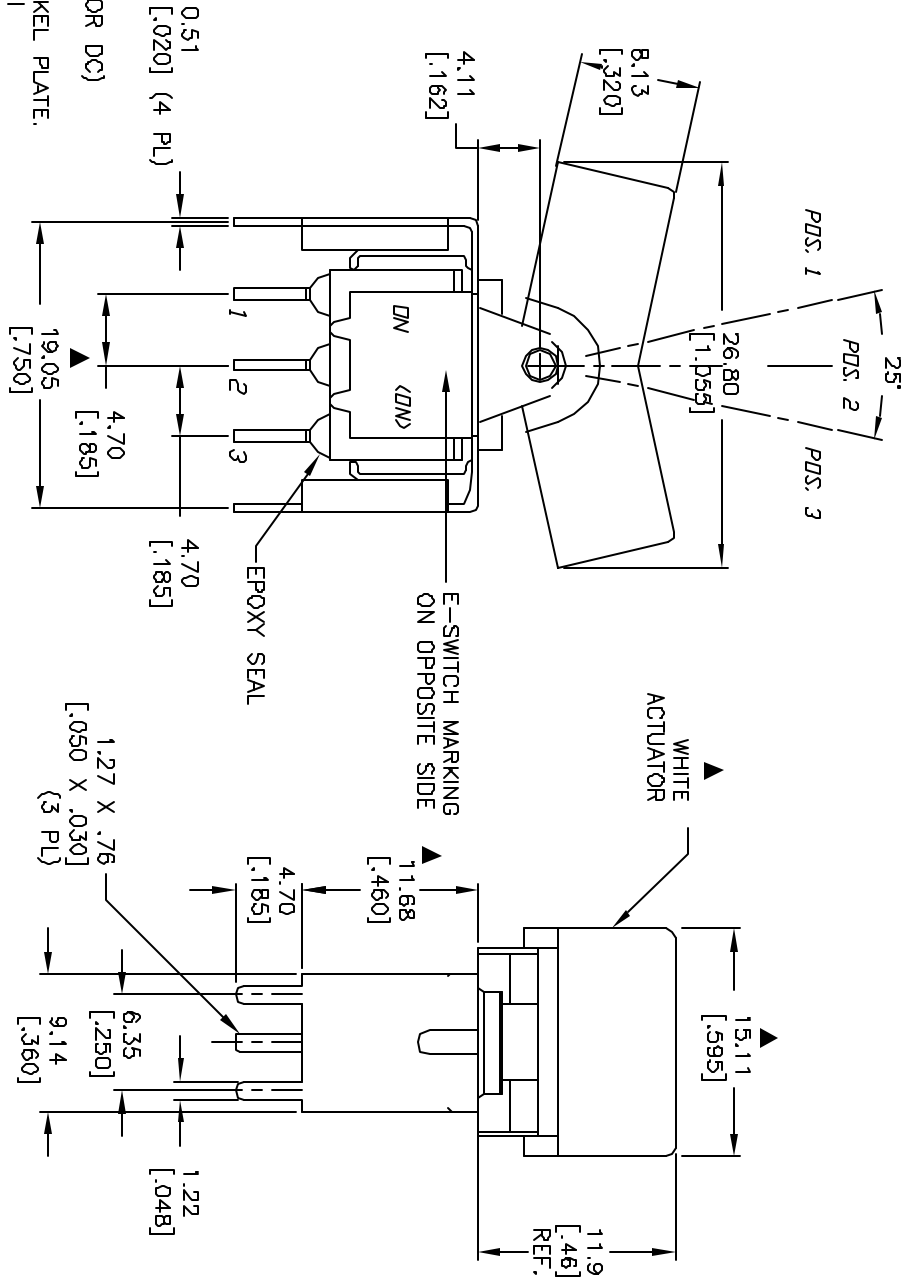
SCALE 2:1



POS. 1	POS. 2	POS. 3
▲ SWITCH FUNCTION		
DN	NONE	<DN>
2-3	OPEN	2-1

NOTES:

1. ALL DIMENSIONS IN MM [INCH]
2. GENERAL TOLERANCE: X.X=±0.4
X.XX=±0.25
3. TERM. NOS. FOR REF. ONLY
4. RATING: 0.4 VOLT-AMPS MAX. @20V MAX. (AC OR DC)
5. MATERIAL: FIXED TERMINAL & MOVING CONTACT
Copper Alloy w/GOLD PLATING OVER NICKEL PLATE.
6. CONTACT RESISTANCE: 10mILLI Ohms max initial
@2-4VDC, 100mA for AG & AU
7. ELECTRICAL LIFE: 50,000 make-and-break cycles at full load.
8. INSULATION RESISTANCE: 1,000M ohm min.
9. DIELECTRIC STRENGTH: 1000V RMS @sea level
10. OPERATING TEMP.: -30°C to 85°C
11. ▲ DENOTES CRITICAL PARAMETER.



E-SWITCH®

300SP2J3WHTVS4RE

REV.	ECN No.	DESCRIPTION	DATE	CHKD
A	13225	RELEASED FOR PRODUCTION	7/9/03	AR

TITLE	SCALE	DATE	DR	DWG	REV
300SP2J3WHTVS4RE	2:1	7/9/03	AR	T312011	A

THE INFORMATION CONTAINED IN THIS DOCUMENT IS PROPRIETARY TO E-SWITCH AND IS NOT TO BE COPIED OR TRANSFERRED