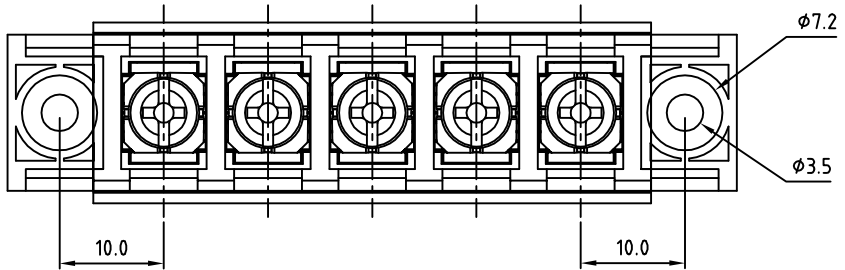
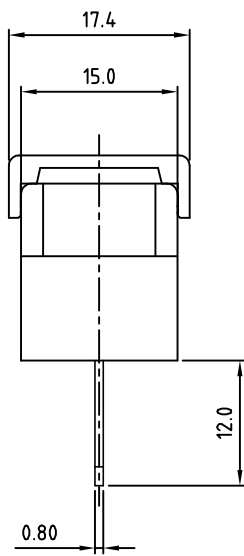
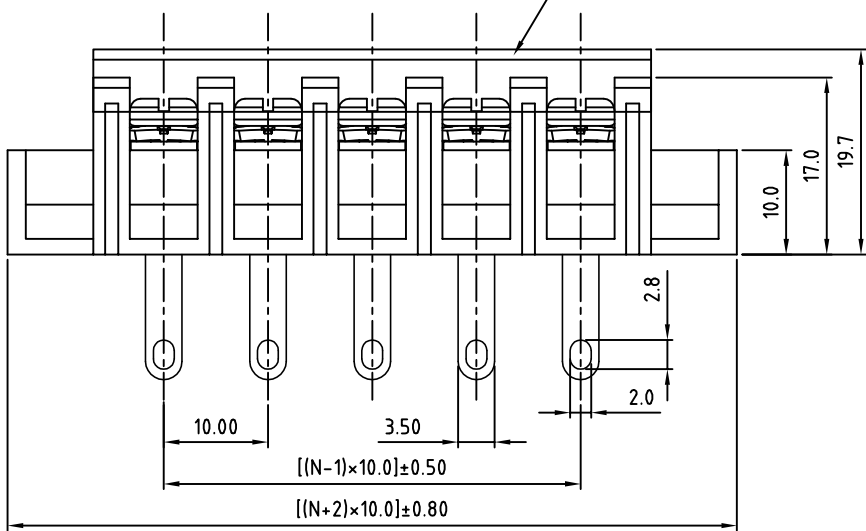


SIGN	DATE	DESCRIPTION	APPROVER

THIS IS CAD DRAWING, DO NOT REVISE MANUALLY!!!



N=Number of poles  
PC COVER



**SPECIFICATIONS**  
**VOLTAGE & CURRENT:** 300 V, 20 A  
**WITHSTANDING VOLTAGE:** AC 2000 V/Min  
**INSULATION RESISTANCE:** 1000 MΩ OR MORE AT DC 500 V  
**TEMPERATURE RANGE:** -40 °C ~ +105 °C  
**SCREW TORQUE VALUE:** 12Lb-In.  
**WIRE RANGE:** 22 - 12 AWG  
**1) MOLDED PARTS:** THERMOPLASTIC, UL 94 V-0 BLACK  
**2) TERMINAL:** BRASS, 0.8t, Tin PLATED  
**3) TERMINAL SCREWS:** STEEL, Ni PLATED, M3.5  
**4) COVER MATERIAL:** PC  
**APPROVAL:**   
 RoHS Compliant

**PART NUMBER:**  
OSTYK603XX130

- NO. OF POLES**
- 02: 2 POLES
  - 03: 3 POLES
  - 04: 4 POLES
  - ⋮
  - 30: 30 POLES

THESE DRAWINGS AND SPECIFICATIONS ARE THE PROPERTY OF ON-SHORE TECHNOLOGY, INC. AND SHALL NOT BE REPRODUCED, COPIED OR USED IN ANY MANNER WITHOUT THE PRIOR WRITTEN CONSENT OF ON-SHORE TECHNOLOGY, INC.



<b>TITLE</b>		OSTYK-603 With Flange&With Cover Series				
<b>PART NO.</b>		OSTYK603XX130		<b>DWG NO.</b>	OSTYK603XX130.DWG	
<b>APPROVED</b>	<b>CHECKED</b>	<b>DESIGNED</b>	<b>DRAWN</b>	<b>CUST NO.</b>	<b>Tolerance</b>	
Shi Jun 2007.07.18	Seamus 2007.07.18	LUCY 2007.7.18	LUCY 2007.7.18		UNIT: mm	X. ±0.50
					SCALE: NONE	X.X ±0.30
					SHEET: 01/01	X.XX ±0.10
					REV.: B	X° ±1°