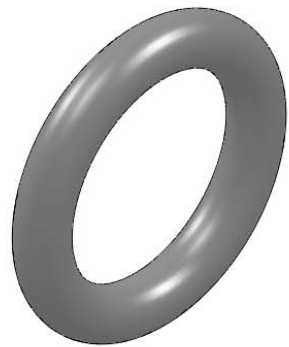
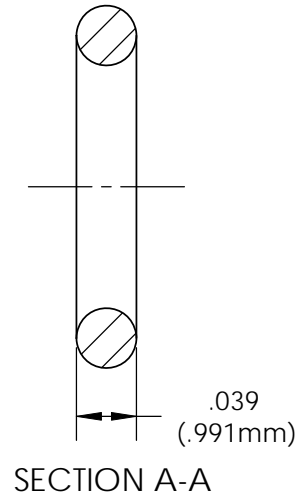
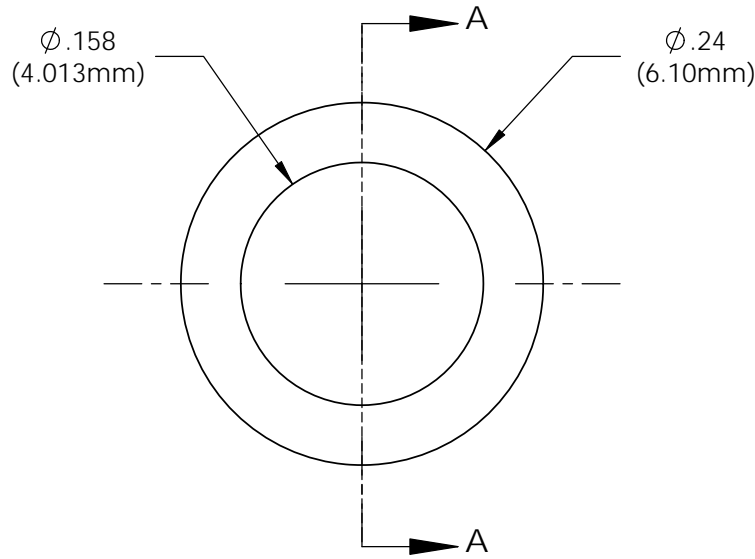


NOTE:
 1) OPERATING TEMPERATURE: -65 °F to +300 °F
 2) U.S. & Foreign Pat. Issued & Pend.

REVISIONS				
ECN #	REV	DESCRIPTION	DATE	INITIALS
	N/A	INITIAL RELEASE	10/29/01	JS
	001	REVISED PER ECR1110AZ01	2/12/10	KH



ISOMETRIC VIEW

<small>UNLESS OTHERWISE SPECIFIED DIMENSIONS ARE IN INCHES: ANGLES ± 1° DECIMALS .X ± .020 .XX ± .010 FINISH .XXX ± .005 BREAK ALL CORNERS AND SHARP EDGES .050 MAX.</small>	MATERIAL ETHYLENE PROPYLENE DIENE RUBBER (EPDM) 70 DUROMETER (BLACK)		VISUAL COMMUNICATIONS COMPANY 190 Bosstick Boulevard, Suite 101 San Marcos, CA 92069 USA Phone (760) 560-1300 Fax (760) 560-1301 email vccsales@vcclite.com	
	FINISH SEE NOTES		TITLE: LENS SPACER SPC 040	
<small>THIRD ANGLE PROJECTION</small> 	APPROVALS	DATE	SIZE A	DWG. NO. SPC 040
	DRAWN K.Howard	2/12/10	CHECKED DPZ	2/22/10
<small>PROPRIETARY AND CONFIDENTIAL</small> <small>THE INFORMATION CONTAINED IN THIS DRAWING IS THE SOLE PROPERTY OF VISUAL COMMUNICATIONS COMPANY, INC. ANY REPRODUCTION IN PART OR AS A WHOLE WITHOUT THE WRITTEN PERMISSION OF VISUAL COMMUNICATIONS COMPANY, INC. IS PROHIBITED.</small>			DO NOT SCALE DRAWING	
			SCALE: 8:1	
			SHEET 1 OF 1	