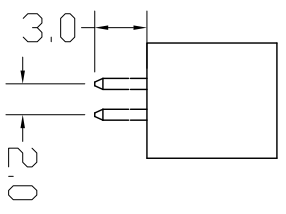
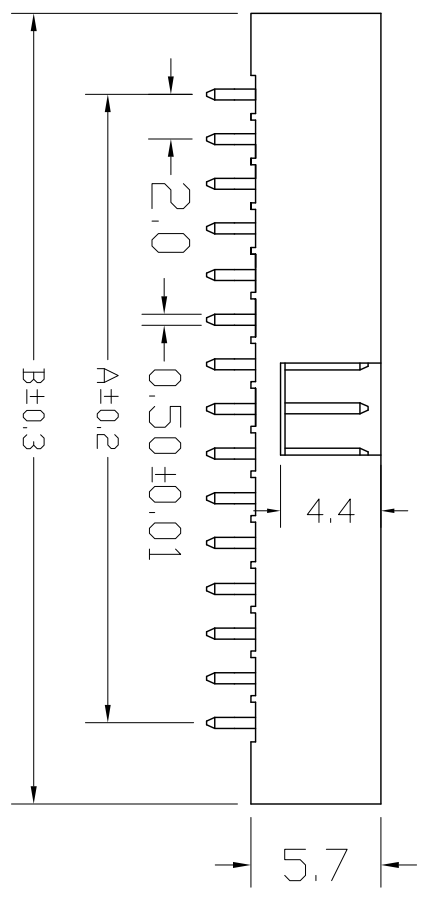
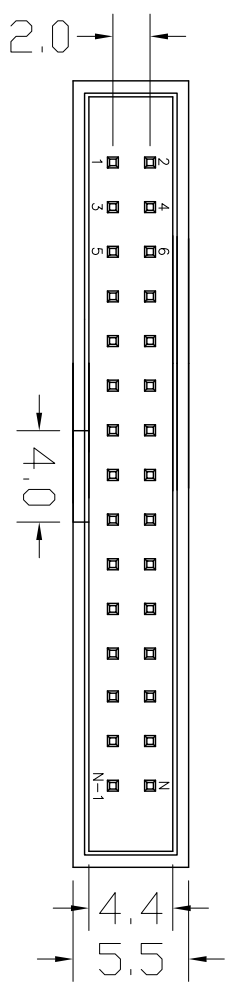


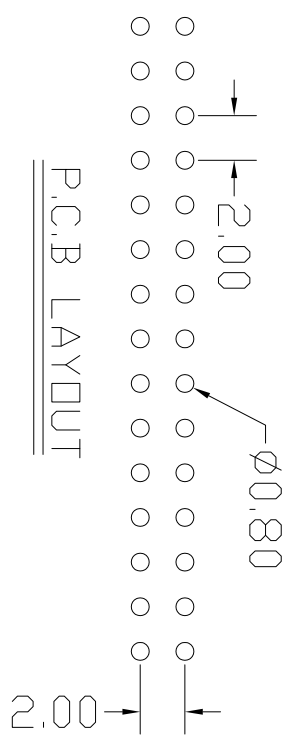
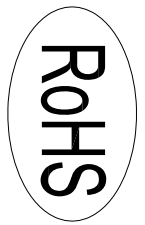
REV.	DESCRIPTION	DATE
A	RELEASE	2012.11.12

NOTES:  
 Insulator Material: Nylon-6T, UL 94V-0  
 Contact Plating: Flash Gold  
 Contact Material: Brass

Current Rating : 1A AC,DC  
 Contact Resistance: 20MΩ Max.  
 Dielectric Withstanding: AC 500V  
 Insulator Resistance: 1000MΩ Min.  
 Operating Temp.: -40°C~+105°C



NUMBER OF POSITIONS	DIMENSIONS	
	A	B
06	4.00	13.30
08	6.00	15.30
10	8.00	17.30
12	10.00	19.30
14	12.00	21.30
16	14.00	23.30
18	16.00	25.20
20	18.00	27.30
24	22.00	31.30
26	24.00	33.30
30	28.00	37.30
34	32.00	41.30
40	38.00	47.30
44	42.00	51.30
50	48.00	57.30
60	58.00	67.30
64	62.00	71.30



UNLESS TOLERANCE		DRAW BY		CNC Tech,LLC	
GENERAL	ANGLE	DESIGN BY		SCALE	SHEET
X ± 0.30	X° ± 3.0°	CHECK BY		1:1	1/1
.X ± 0.20	.X° ± 2.0°	APPROVE BY		MM	
.XX ± 0.15	.XX° ± 1.0°				
.XXX ± 0.08	.XXX ± 0.5°				
Port NO.:		DRAW NO.:		REV: A	
3120-XX-0100-00					