

THIS DRAWING IS UNPUBLISHED. RELEASED FOR PUBLICATION 20  
 © COPYRIGHT 20 BY - ALL RIGHTS RESERVED.

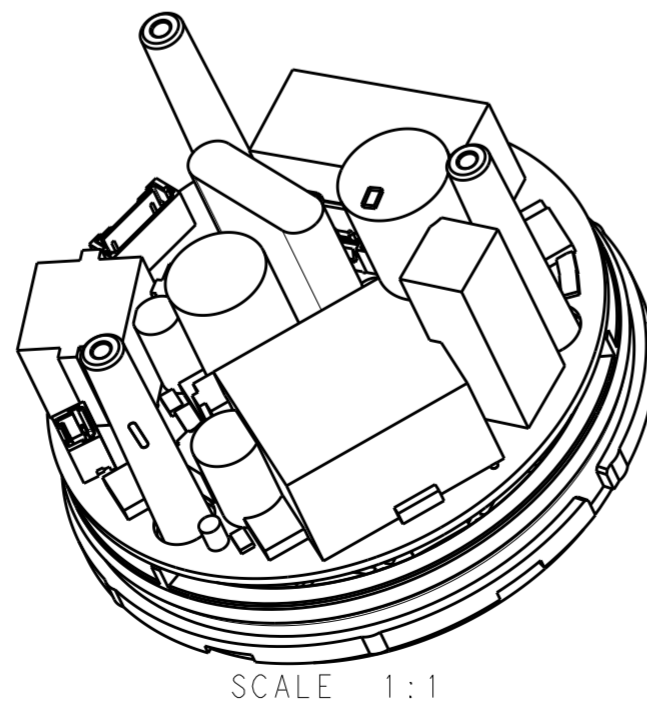
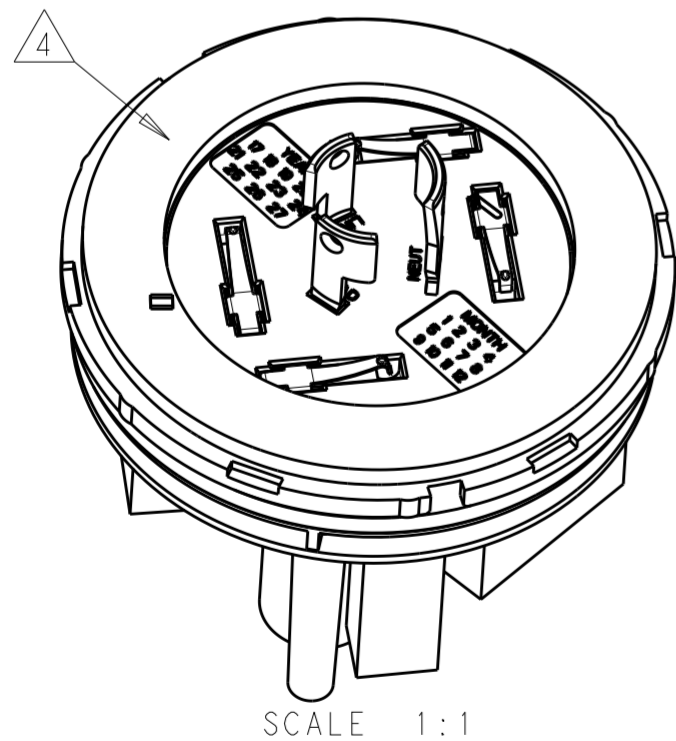
| REVISIONS |     |                                   |           |       |
|-----------|-----|-----------------------------------|-----------|-------|
| P         | LTR | DESCRIPTION                       | DATE      | APVD  |
| 2         |     | ADDED PART NUMBERS                | 26JUN2017 | CD CG |
| 3         |     | TEMP/VOLTAGE/HUMIDITY/POWER       | 20OCT2017 | CG CG |
| 4         |     | CHANGE POWER BACK 1W/2W 120V/277V | 10NOV2017 | CG CG |
| 5         |     | SHT 1:MAX CURRENT, SHT 3: COVER   | 20FEB2018 | CG CG |

| ABSOLUTE MAXIMUM RATINGS       | SYMBOL       | MIN | MAX | UNIT |
|--------------------------------|--------------|-----|-----|------|
| STORAGE TEMPERATURE            | $T_{stg}$    | -40 | 105 | °C   |
| LINE TO NEUTRAL VOLTAGE        | $V_{in}$     | 90  | 300 | VAC  |
| MAXIMUM AC CURRENT (RESISTIVE) | $A_{switch}$ | --  | 10  | AMPS |

| ELECTRICAL CHARACTERISTICS   |  |
|------------------------------|--|
| INPUT VOLTAGE RANGE          | 110/120, 230/240 AND 277 VAC NOMINAL SOURCES             |
| INPUT FREQUENCY              | 47-63 Hz FOR 50/60 Hz NOMINAL SOURCES                    |
| MAXIMUM AC CURRENT           | 10 AMPS (RESISTIVE), 5 AMPS (ELECTRONIC BALLEST)         |
| DC POWER SUPPLIES            |  |
| DIMMING                      | 24 VDC AT 50 mA MAXIMUM                                  |
| COMMUNICATIONS               | 5 VDC AT 1000 mA MAXIMUM                                 |
| AUXILIARY                    | 3.3VDC AT 500 mA MAXIMUM                                 |
| SURGE PROTECTION             | ANSI C62.41 6 kV, 3 kA COMBINATION WAVE SURGE PROTECTION |
| POWER CONSUMPTION (MIN LOAD) | < 1W @ 120 VAC, < 2W @ 277 VAC                           |
| FAIL MODE                    | ON (NORMALLY CLOSED) OR OFF (NORMALLY OPEN)              |

| ENVIRONMENTAL CHARACTERISTICS |   |
|-------------------------------|---|
| OPERATING TEMPERATURE         | -40°C TO +85°C (SEE 114-133085 FOR DETAILS)                   |
| RELATIVE HUMIDITY             | OPERATING: 15% TO 96%, NON-CONDENSING ENVIRONMENT.            |
| ALTITUDE                      | OPERATING: -15m TO +2,000m<br>NON-OPERATING: -15m TO +14,000m |

- 1 MATERIALS:  
HOUSING: PBT  
DIMMING CONTACTS (QTY. 4): COPPER ALLOY  
LINE VOLTAGE CONTACTS (QTY. 3): COPPER ALLOY  
GASKET: CROSS-LINKED POLYETHYLENE  
O-RING: SILICONE RUBBER  
PCBA: FR4
- 2 FINISH:  
DIMMING CONTACTS: NICKEL UNDERPLATE ENTIRE  
CONTACT 0.127 µm MIN THICK. SELECTIVE GOLD PLATE CONTACT MATING AREA (MATING FACE SIDE ONLY) 0.76 µm MIN THICK.  
MATTE TIN PLATE TAB ON BOTH SIDES 0.30 µm MIN THICK.  
LINE VOLTAGE CONTACTS: MATTE TIN PLATE
- 3 MATING INTERFACE PER ANSI C136.41-2013.
- 4 ADHESIVE BACKED GASKET SUPPLIED BUT NOT INSTALLED.
- 5 ADDITIONAL COVERS (P/N: 2306130-X) AVAILABLE CONTACT TE CONNECTIVITY FOR MORE OPTIONS.
- 6. NOT PRODUCTION TOOLED.
- 7. THIS PRODUCT HAS NOT COMPLETED VALIDATION TESTING.
- 8. MUST COMPLY WITH DIRECTIVE 2002/95/EC (ROHS)
- 9. IN ADDITION TO THE STANDARD PRODUCT PART NUMBERS, OTHER CONFIGURATIONS MAY BE AVAILABLE FOR SPECIAL ORDER. PLEASE CONTACT A TE CONNECTIVITY SALES OFFICE FOR MORE INFO.



|         |                        |            |           |             |
|---------|------------------------|------------|-----------|-------------|
| 50/60Hz | NO                     | NO         | OFF       | 2-2314786-4 |
| 50/60Hz | NO                     | NO         | ON        | 2-2314786-3 |
| 50/60Hz | YES                    | NO         | OFF       | 2-2314786-2 |
| 50/60Hz | YES                    | NO         | ON        | 2-2314786-1 |
| 50Hz    | NO                     | YES        | OFF       | 1-2314786-4 |
| 50Hz    | NO                     | YES        | ON        | 1-2314786-3 |
| 50Hz    | YES                    | YES        | OFF       | 1-2314786-2 |
| 50Hz    | YES                    | YES        | ON        | 1-2314786-1 |
| 60Hz    | NO                     | YES        | OFF       | 2314786-4   |
| 60Hz    | NO                     | YES        | ON        | 2314786-3   |
| 60Hz    | YES                    | YES        | OFF       | 2314786-2   |
| 60Hz    | YES                    | YES        | ON        | 2314786-1   |
| FREQ.   | ENERGY METERING HEADER | ZERO CROSS | FAIL MODE | PART NO.    |

NEW PRODUCT  
**PRELIMINARY**  
 IN DEVELOPMENT

THIS DRAWING IS A CONTROLLED DOCUMENT. DWN: C. DAILY 30DEC2016  
 CHK: C. GINGRICH 30DEC2016  
 APVD: C. GINGRICH

**PRELIMINARY** **STE** TE Connectivity

NAME: ASSEMBLY, LUMAWISE ENDURANCE N ENHANCED BASE

PRODUCT SPEC: 108-133085  
 APPLICATION SPEC: 114-133085

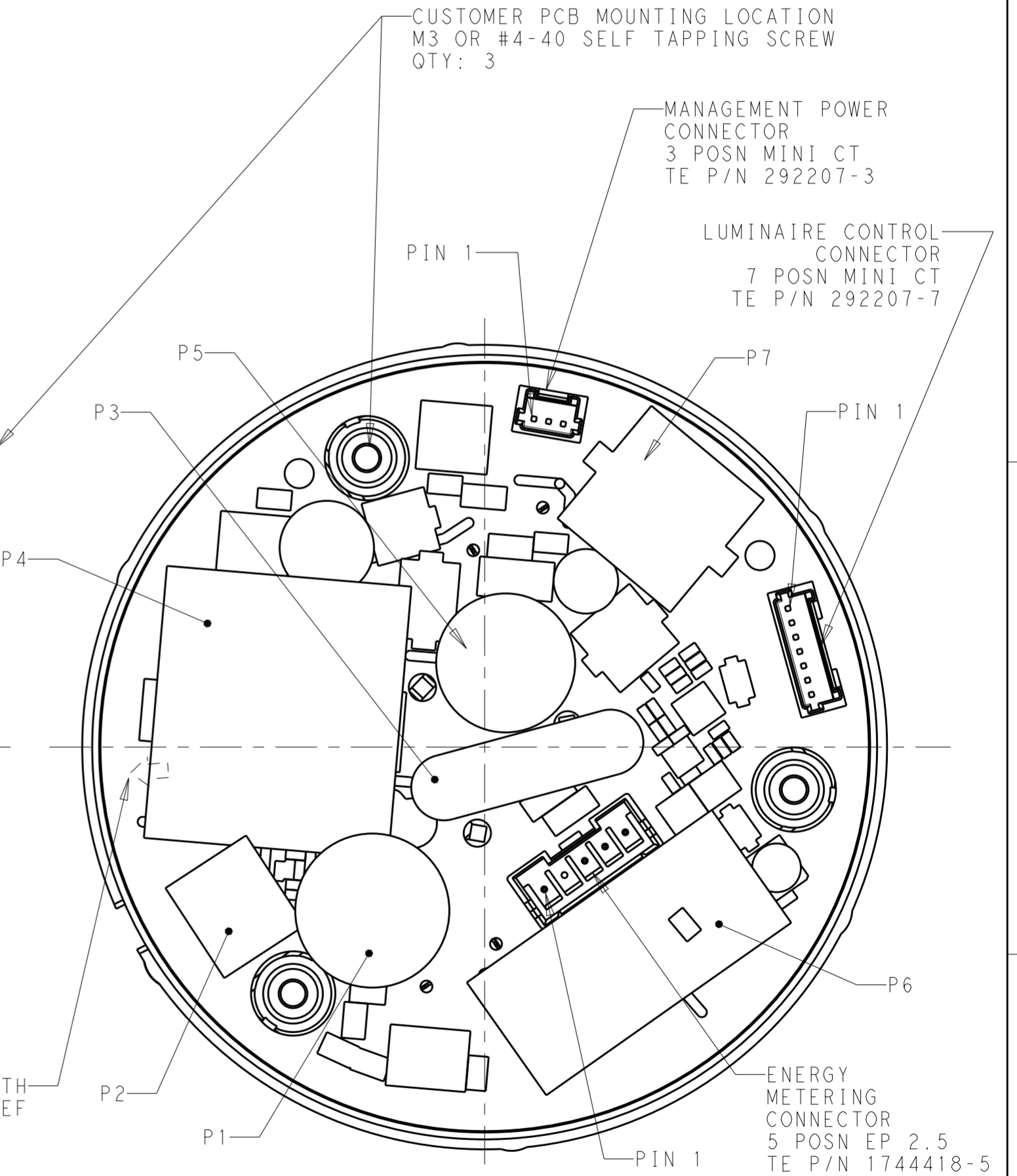
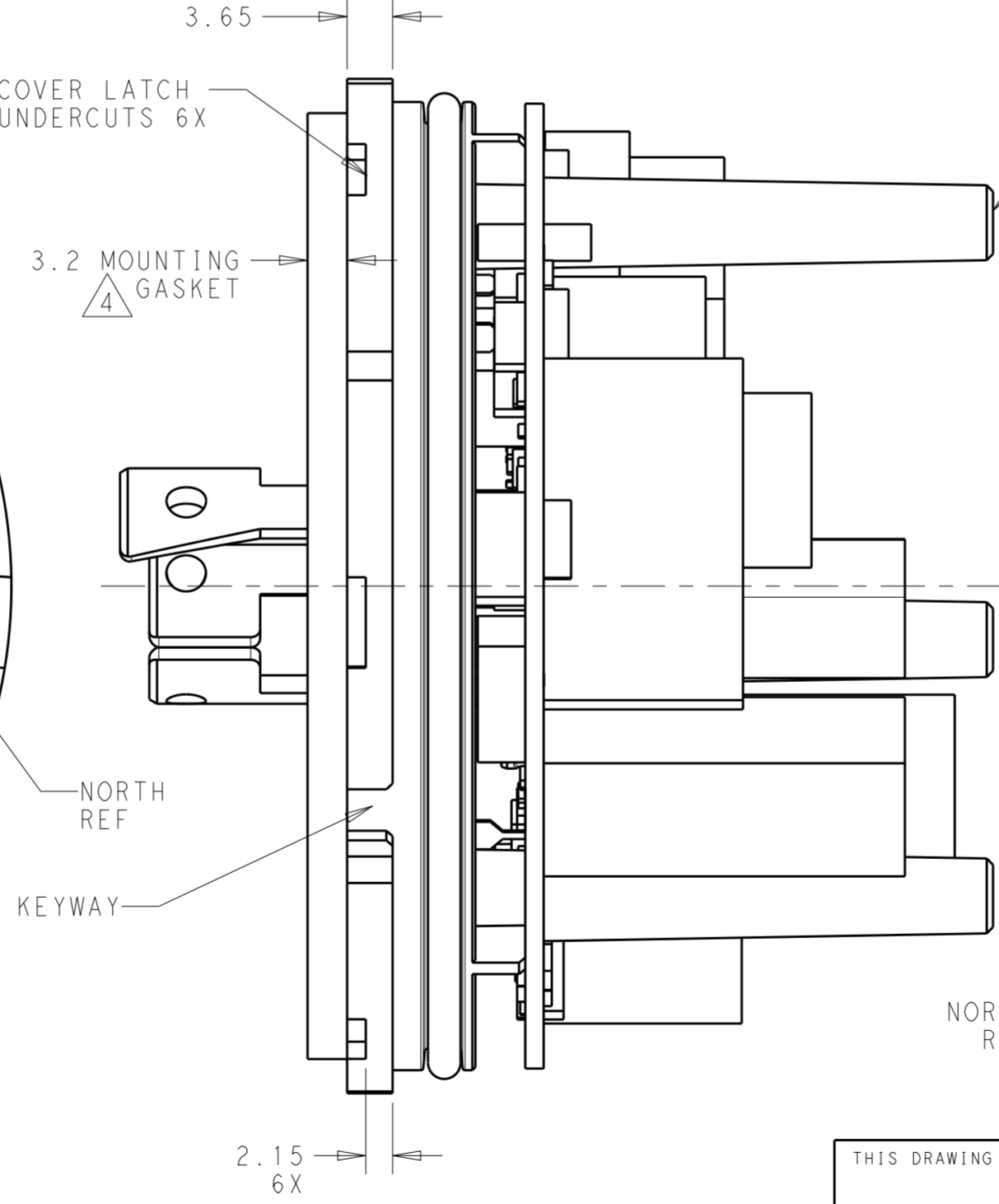
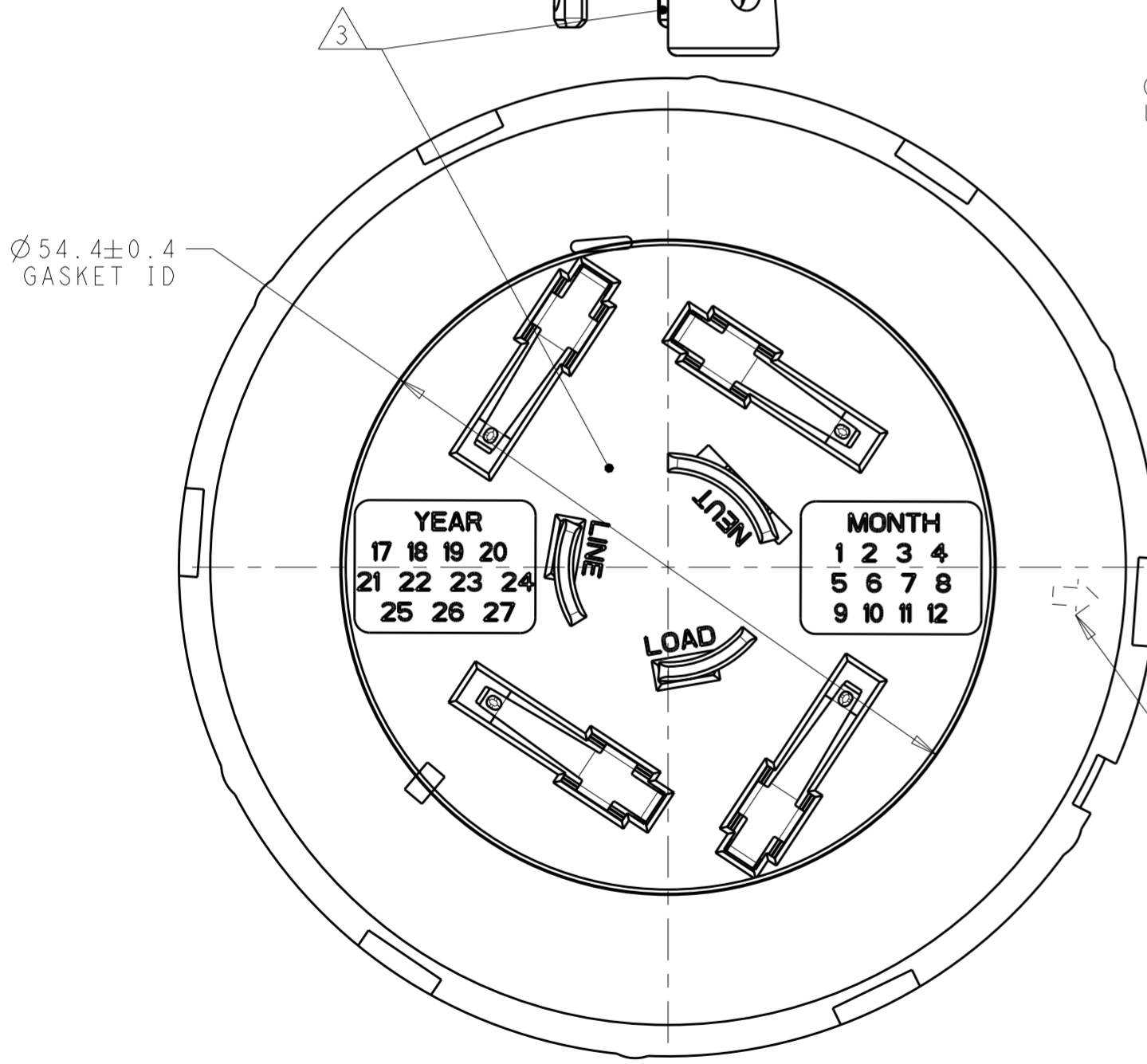
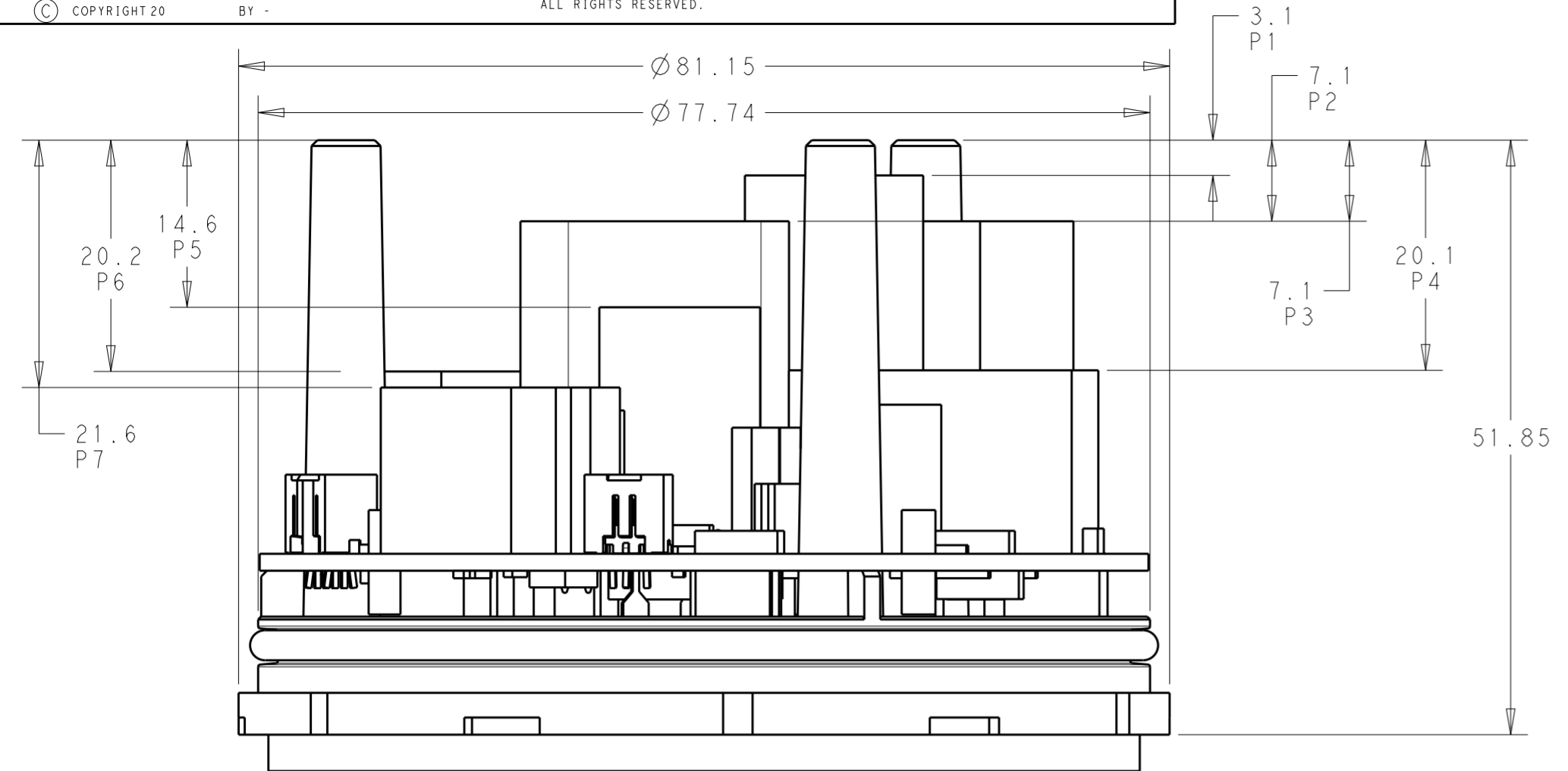
SIZE: A2 CAGE CODE: 00779 DRAWING NO: C-2314786 RESTRICTED TO: -

MATERIAL: - FINISH: 1 2

CUSTOMER DRAWING SCALE: 2:1 SHEET: 1 OF 4 REV: 5

THIS DRAWING IS UNPUBLISHED. RELEASED FOR PUBLICATION 20  
 © COPYRIGHT 20 BY - ALL RIGHTS RESERVED.

| REVISIONS |     |             |      |     |      |
|-----------|-----|-------------|------|-----|------|
| P         | LTR | DESCRIPTION | DATE | DWN | APVD |
| -         | -   | SEE SHEET 1 | -    | -   | -    |



**NEW PRODUCT  
 PRELIMINARY  
 IN DEVELOPMENT**

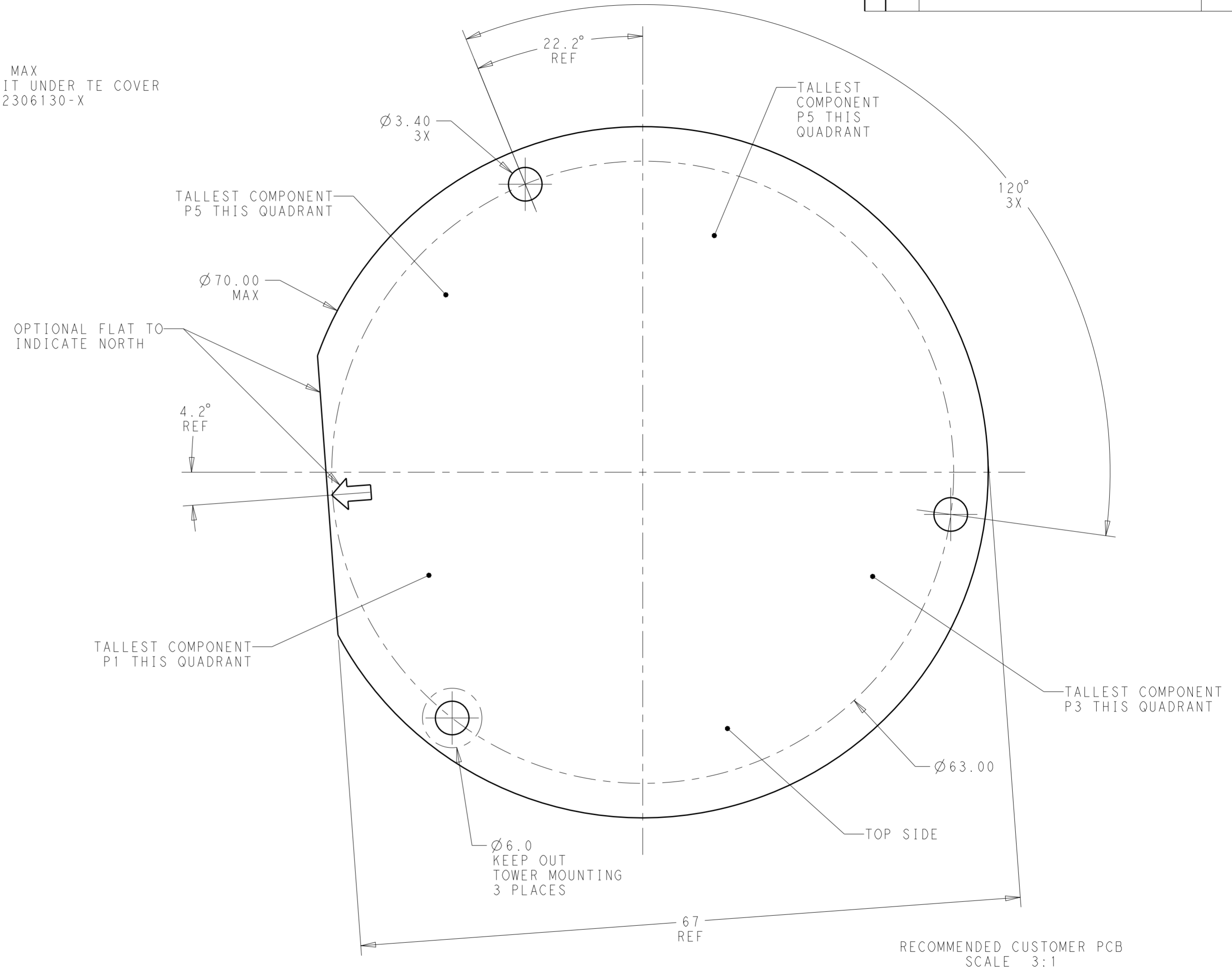
|   |  |                                 |                 |   |
|---|--|---------------------------------|-----------------|---|
| THIS DRAWING IS A CONTROLLED DOCUMENT.  |  | DWN<br>C. DAILY<br>30DEC2016    | TE Connectivity |   |
|   |  | CHK<br>C. GINGRICH<br>30DEC2016 |                 |   |
| DIMENSIONS:<br>mm   |  | APVD                            |                 | NAME<br>ASSEMBLY, LUMAWISE ENDURANCE N<br>ENHANCED BASE |
| TOLERANCES UNLESS OTHERWISE SPECIFIED:<br>0 PLC ±<br>1 PLC ±0.35<br>2 PLC ±0.25<br>3 PLC ±<br>4 PLC ±<br>ANGLES ±3°<br>FINISH |  | PRODUCT SPEC<br>108-133085      |                 | SIZE<br>A200779   |
| MATERIAL  |  | APPLICATION SPEC<br>114-133085  |                 | DRAWING NO<br>C-2314786                                 |
|   |  | WEIGHT                          |                 | RESTRICTED TO   |
|   |  | CUSTOMER DRAWING                |                 | SCALE 2:1 SHEET 2 OF 4 REV 5                            |

THIS DRAWING IS UNPUBLISHED. RELEASED FOR PUBLICATION 20  
 © COPYRIGHT 20 BY - ALL RIGHTS RESERVED.

| REVISIONS |     |             |      |      |
|-----------|-----|-------------|------|------|
| P         | LTR | DESCRIPTION | DATE | APVD |
| -         | -   | SEE SHEET 1 | -    | -    |
|           |     |             |      |      |
|           |     |             |      |      |

2.5 MAX  
AT LOCATION P1

24.0 MAX  
TO FIT UNDER TE COVER  
PN: 2306130-X



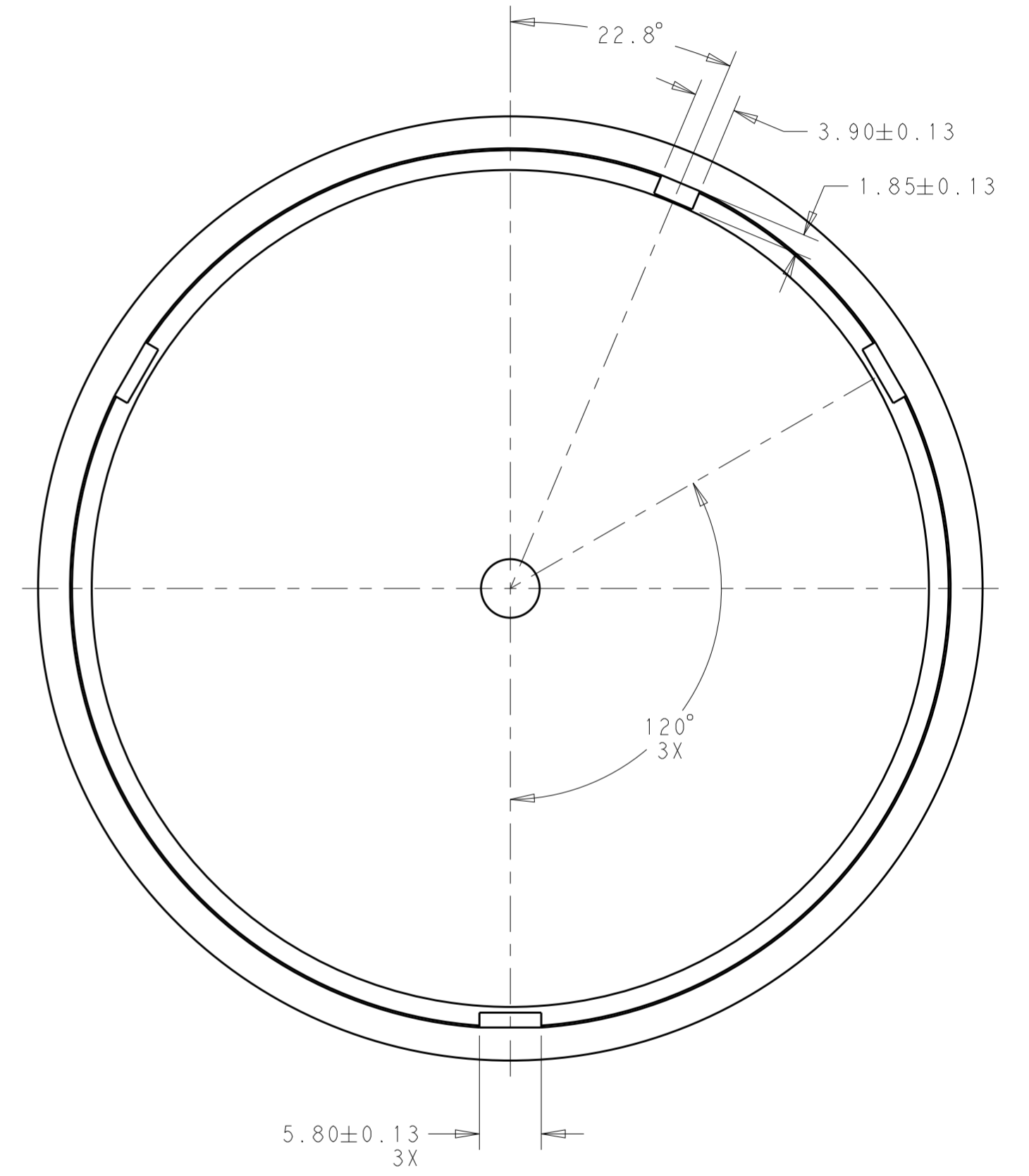
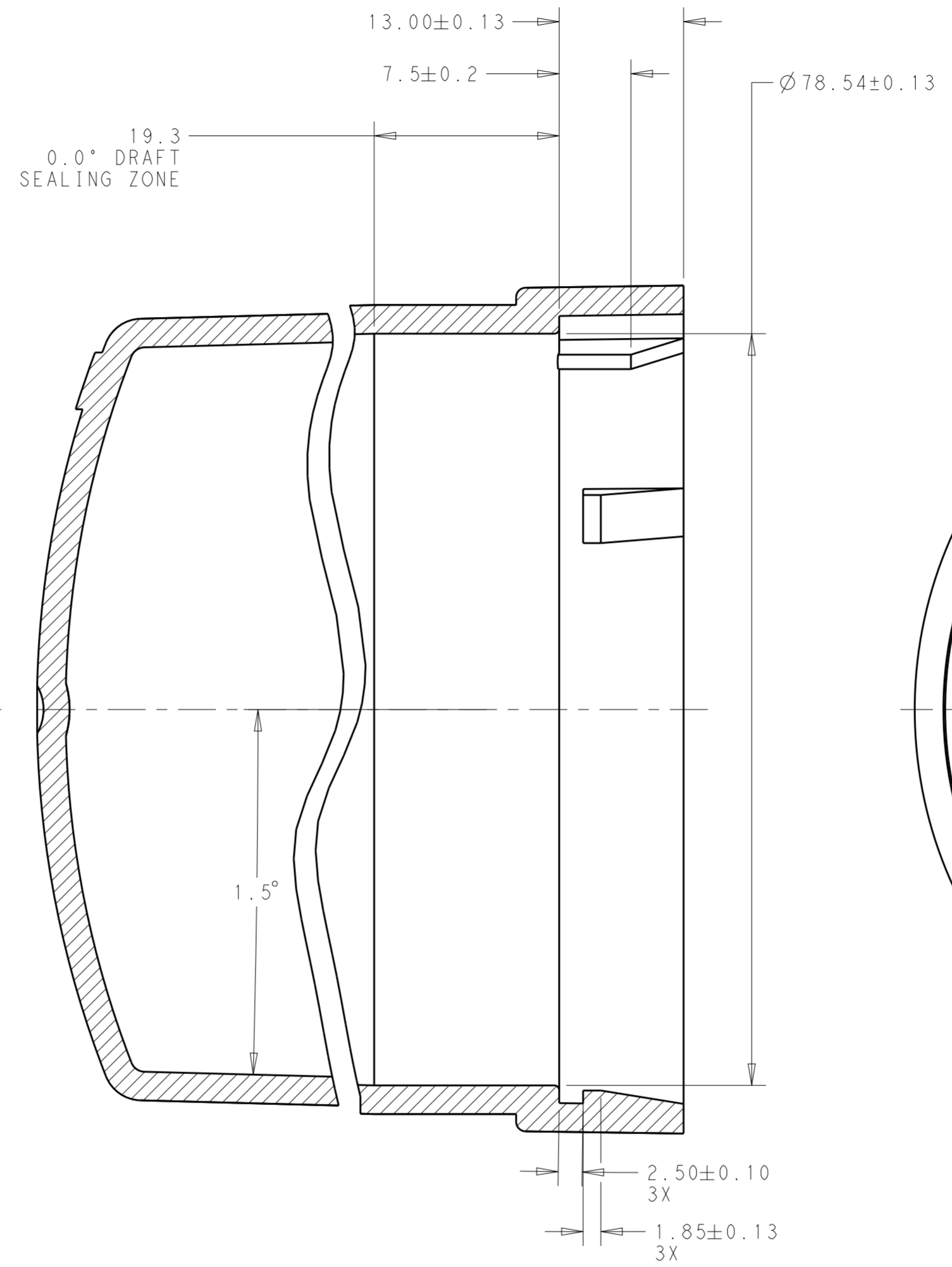
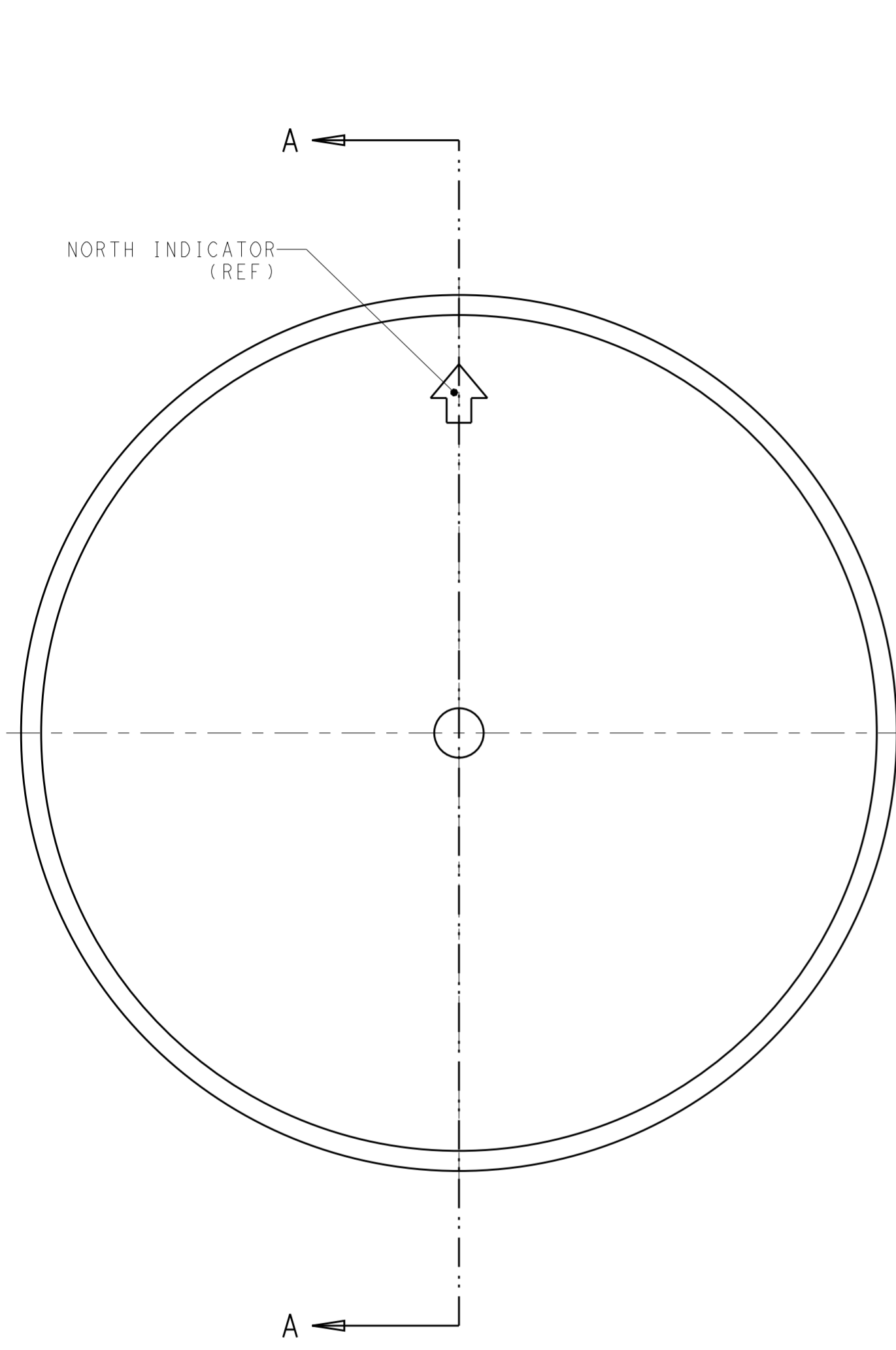
1.60

**NEW PRODUCT  
PRELIMINARY  
IN DEVELOPMENT**

|  |  |                                 |   |                        |
|--|--|---------------------------------|---|------------------------|
| THIS DRAWING IS A CONTROLLED DOCUMENT. |  | DWN<br>C. DAILY<br>30DEC2016    | TE Connectivity   |                        |
|  |  | CHK<br>C. GINGRICH<br>30DEC2016 |   |                        |
| DIMENSIONS:                            |  | APVD                            | NAME<br>ASSEMBLY, LUMAWISE ENDURANCE N<br>ENHANCED BASE |                        |
| mm                                     | TOLERANCES UNLESS OTHERWISE SPECIFIED: | PRODUCT SPEC<br>108-133085      | RESTRICTED TO   |                        |
|  | 0 PLC ±                                | APPLICATION SPEC<br>114-133085  | SIZE<br>A200779   | CAGE CODE<br>C-2314786 |
|  | 1 PLC ±0.35                            | WEIGHT                          | DRAWING NO  |                        |
|  | 2 PLC ±0.25                            | CUSTOMER DRAWING                | SCALE<br>2:1  | SHEET<br>3 OF 4        |
|  | 3 PLC ±                                |                                 | REV<br>5  |                        |
|  | 4 PLC ±                                |                                 |   |                        |
|  | ANGLES ±3°                             |                                 |   |                        |
|  | FINISH                                 |                                 |   |                        |

THIS DRAWING IS UNPUBLISHED. RELEASED FOR PUBLICATION 20  
 © COPYRIGHT 20 BY - ALL RIGHTS RESERVED.

| REVISIONS |     |             |      |      |
|-----------|-----|-------------|------|------|
| P         | LTR | DESCRIPTION | DATE | APVD |
| -         | -   | SEE SHEET 1 | -    | -    |
|           |     |             |      |      |
|           |     |             |      |      |



SECTION A-A

MATING COVER DIMENSIONS FOR  
 81MM DIAMETER BASES  
 (2306130-X REF)

NEW PRODUCT  
**PRELIMINARY**  
 IN DEVELOPMENT

|  |  |   |                 |   |
|--|--|---|-----------------|---|
| THIS DRAWING IS A CONTROLLED DOCUMENT. |  | DWN<br>C. DAILY<br>30DEC2016  | TE Connectivity |   |
|  |  | CHK<br>C. GINGRICH<br>30DEC2016   |                 |   |
| DIMENSIONS:<br>mm                      |  | TOLERANCES UNLESS OTHERWISE SPECIFIED:<br>0 PLC ±<br>1 PLC ±0.35<br>2 PLC ±0.25<br>3 PLC ±<br>4 PLC ±<br>ANGLES ±3°<br>FINISH - |                 | NAME<br>ASSEMBLY, LUMAWISE ENDURANCE N<br>ENHANCED BASE |
| MATERIAL<br>-                          |  | PRODUCT SPEC<br>108-133085<br>APPLICATION SPEC<br>114-133085<br>WEIGHT<br>-   |                 | SIZE<br>A200779   |
|  |  | CUSTOMER DRAWING  |                 | DRAWING NO<br>C-2314786<br>RESTRICTED TO<br>-           |
|  |  | SCALE 2:1   |                 | SHEET 4 OF 4<br>REV 5                                   |