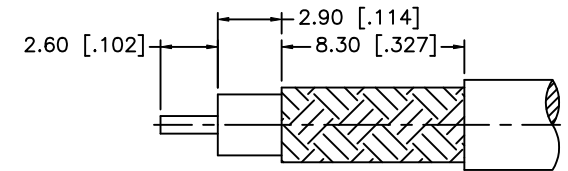
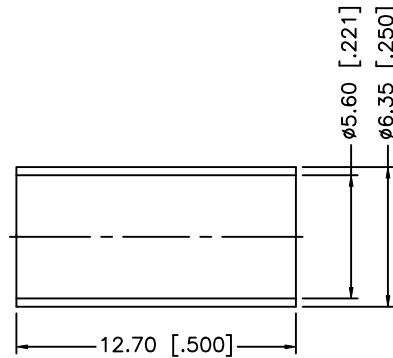
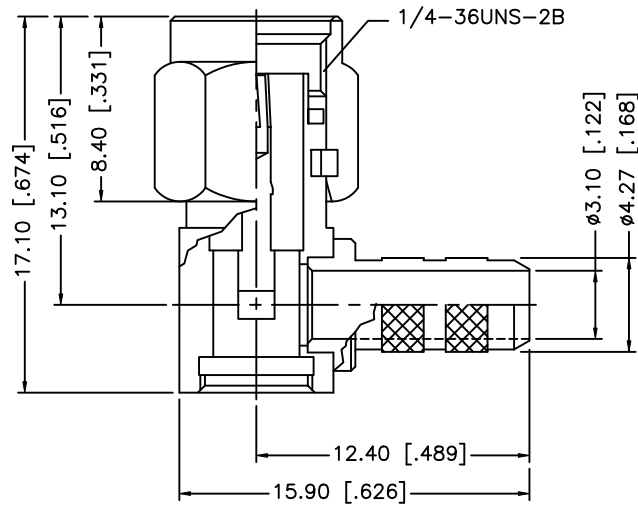
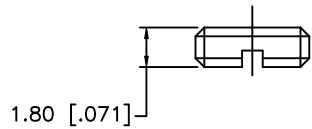


| REV. | DATE | ECR NO. | DESCRIPTION |
|------|----------|---------|---|
| A | 04/31/03 | - | UPDATE DRAWING FORMAT |
| B | 06/21/05 | - | CHANGE 59/U TO 58/U IN PART DESCRIPTION |
| C | 09/10/08 | - | CHANGE 58/U TO 55/U IN PART DESCRIPTION |



RECOMMENDED
CABLE STRIPPING DIM'S



NOTE:

1. CRIMPED FERRULE HEX CRIMP SIZE .213" [5.41]
2. CONTACT PIN TO SOLDER.

| | | | | UNLESS OTHERWISE SPECIFIED DIMENSIONS ARE IN MILLIMETERS. DIMENSIONS IN [] ARE IN INCHES AND FOR CUSTOMER REFERENCE ONLY. | APPROVALS | DATE | Amphenol Connex | | | | | | | | | |
|---|---------------|-------------|---------|--|--|--------|------------------------|---------------------------|--|----------|--|--|--|---------------------|--|--|
| 8 | | | | | DRAWN | GRS | | | | 09/10/08 | PART DESCRIPTION SMA R/A CRIMP PLUG (FOR RG-55/U, 223/U, 142/U, 400/U CABLE) | | | | | |
| 7 | FERRULE | COPPER | GOLD | 1 | CHECKED | | | PART NO. 132194 | | | | | | | | |
| 6 | COVER | BRASS | GOLD | 1 | ISSUED | | | | | | | | | DWG. NO. 132194.DWG | | |
| 5 | GASKET | SILICONE | RED | 1 | SHEET | 1 OF 1 | | | | | | | | | | |
| 4 | RETAINER RING | BER. COPPER | NATURAL | 1 | UNLESS OTHERWISE SPECIFIED TOLERANCES FOR MILLIMETERS ARE: 0.5 - 8mm ± 0.20mm 8 - 30mm ± 0.40mm 30 - 120mm ± 0.50mm | | | | | | | | | | | |
| 3 | CONTACT PIN | BRASS | GOLD | 1 | UNLESS OTHERWISE SPECIFIED TOLERANCES FOR INCHES ARE: .020 - .315 ± 0.007" .315 - 1.180 ± 0.015" 1.180 - 4.724 ± 0.020" | | | | | | | | | | | |
| 2 | INSULATOR | PTFE | NATURAL | 1 | DO NOT SCALE DRAWING | | | | | | | | | | | |
| 1 | BODY/BARREL | BRASS | GOLD | 1 | CAD FILE C:/132/132194.DWG | | | | | | | | | | | |