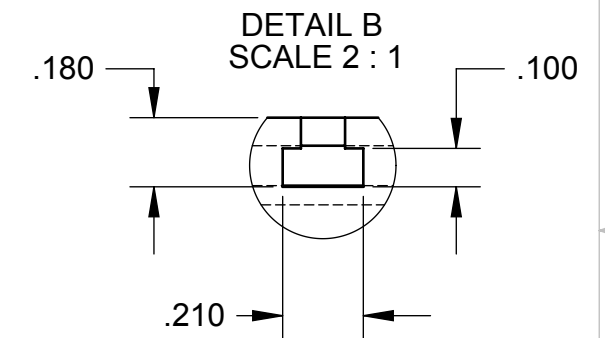
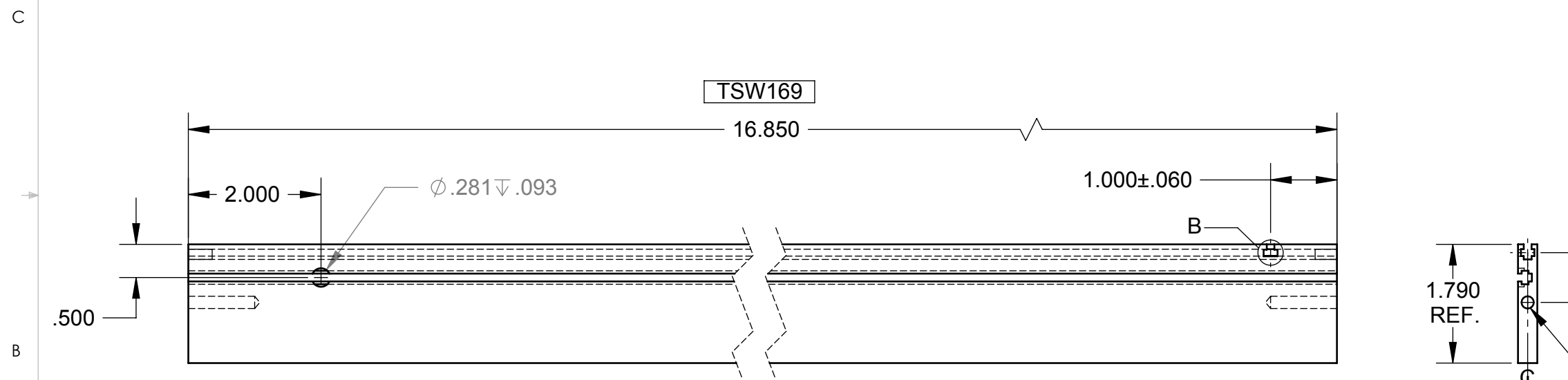
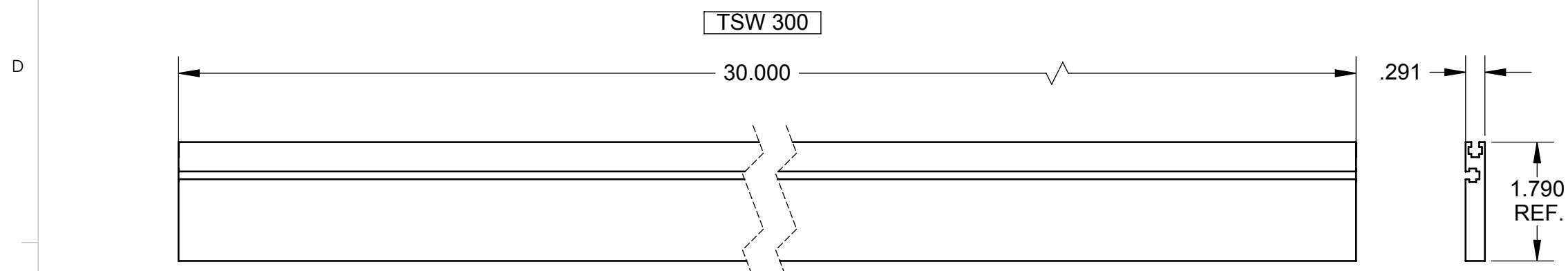


REVISIONS				
ZONE	REV.	DESCRIPTION	DATE	APPROVED
ALL	C	ADDED DET. NO. 4 ECO 1481 ADDED P/N TSW169-4	06/05/74	
	C1	ADDED CAT NO. TSW-81N-4	09/22/74	
	C2	DIM .875 WAS .825		
	D	REV'D Ø.281 HOLE POS. ECO 1682		
	D1	ADDED Z4424-30-4 & -5 TO TABLE		
	E	ECO 1926	01/07/80	
	E1	P/N M4424-30-1 WAS DETAIL 3 & INSERT WAS NONE (ERROR)	12/08/81	
	E2	DELETED P/N M4424-30-1	12/15/81	
	F	INC ECO 3924		
	F1	DETAIL 4 HOLE SIZE WAS Ø.1875 +.003/-.000 x .312 +.020/-.000 DEEP		
	F2	INC ECO 3949		
	F3	ADDED NOTE 10		
	F4	REMOVED NO LONGER USED P/N#	02/10/09	



⑦ DRILL .187 <sup>+0.003</sup>/<sub>-.000</sub> DIA., .312 <sup>+0.020</sup>/<sub>-.000</sub> DEEP, TSW169-4 ONLY

- ⑥ USE SQUARE ENDED CLOSE FITTING GAUGE PIN TO CHECK DEPTH OF HOLE
- 5. PARTS TO BE DEGREASED AFTER FABRICATION
- ④ PARTS TO BE FREE OF BURRS & SURFACE SCRATCHES REMOVE ALL BURRS FROM EXTRUDED T-SLOTS
- 3. PART TO BE STRAIGHT WITHIN .015/10 INCHES IN LENGTH
- 2. CUT ENDS TO BE SQUARE WITHIN .0025/INCH IN WIDTH
- 1. MAT'L: AL. EXTRUSION, 6063-T6

NOTES: UNLESS OTHERWISE SPECIFIED.

**PROPRIETARY AND CONFIDENTIAL**  
THE INFORMATION CONTAINED IN THIS DRAWING IS THE SOLE PROPERTY OF VECTOR ELECTRONICS & TECH., INC. ANY REPRODUCTION IN PART OR AS A WHOLE WITHOUT THE WRITTEN PERMISSION OF VECTOR ELECTRONICS & TECH., INC. IS PROHIBITED.

UNLESS OTHERWISE SPECIFIED:	NAME	DATE
DIMENSIONS ARE IN INCHES	DRAWN	TRUSHAR
TOLERANCES:	CHECKED	
FRACTIONAL ±	ENG APPR.	
ANGULAR: ± X°	MFG APPR.	
TWO PLACE DECIMAL ±.03	Q.A.	
THREE PLACE DECIMAL ±.005		
INTERPRET GEOMETRIC TOLERANCING PER:		
MATERIAL 1	THIRD ANGLE PROJECTION	
FINISH		
DO NOT SCALE DRAWING		

<b>VECTOR</b>		11115 VANOWEN ST., NORTH HOLLYWOOD, CA 91605	
<b>T-STRUT DETAIL TSW-SER.</b>			
SIZE	DWG. NO.	REV	
B	M4424D5.30	F4	
SCALE: 1:2	WEIGHT:	SHEET 1 OF 1	