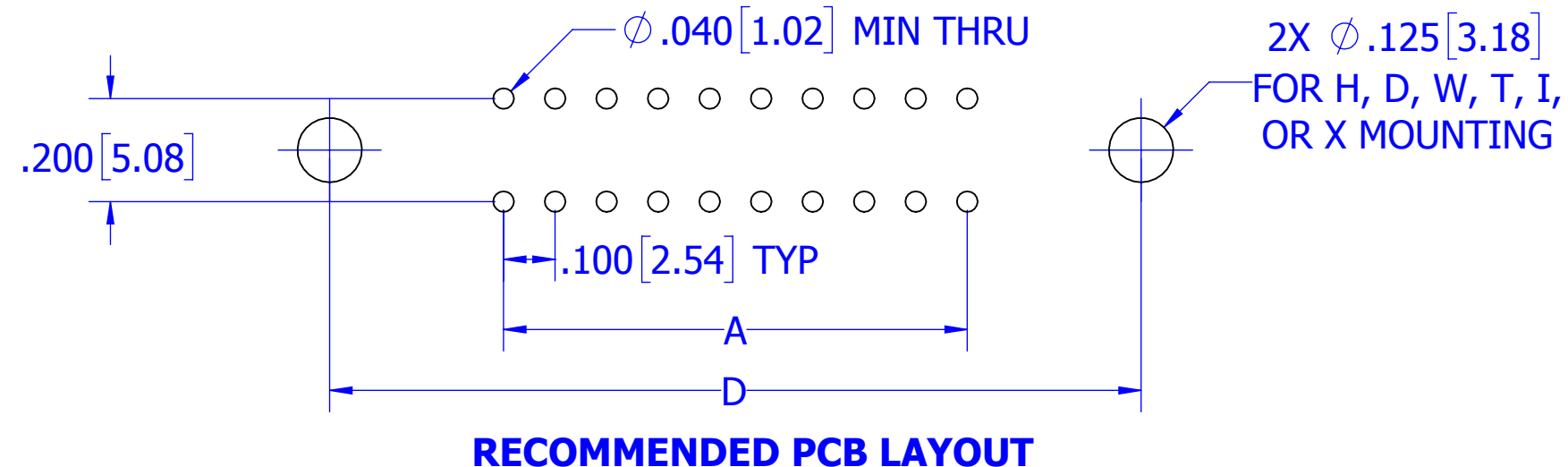
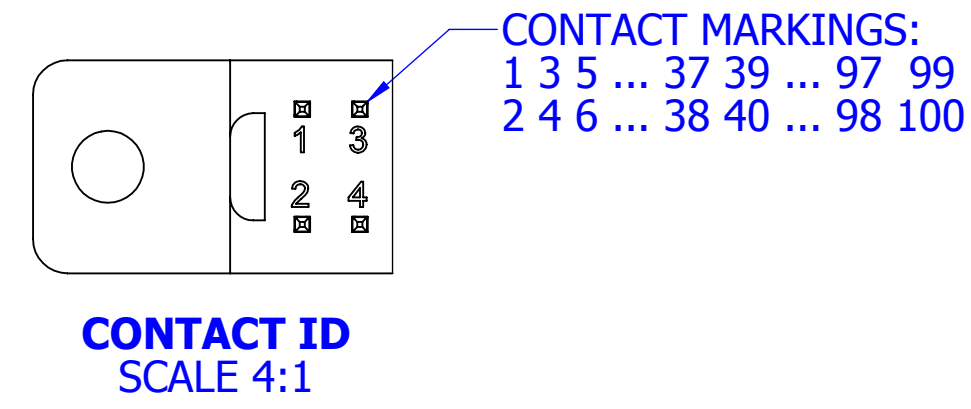
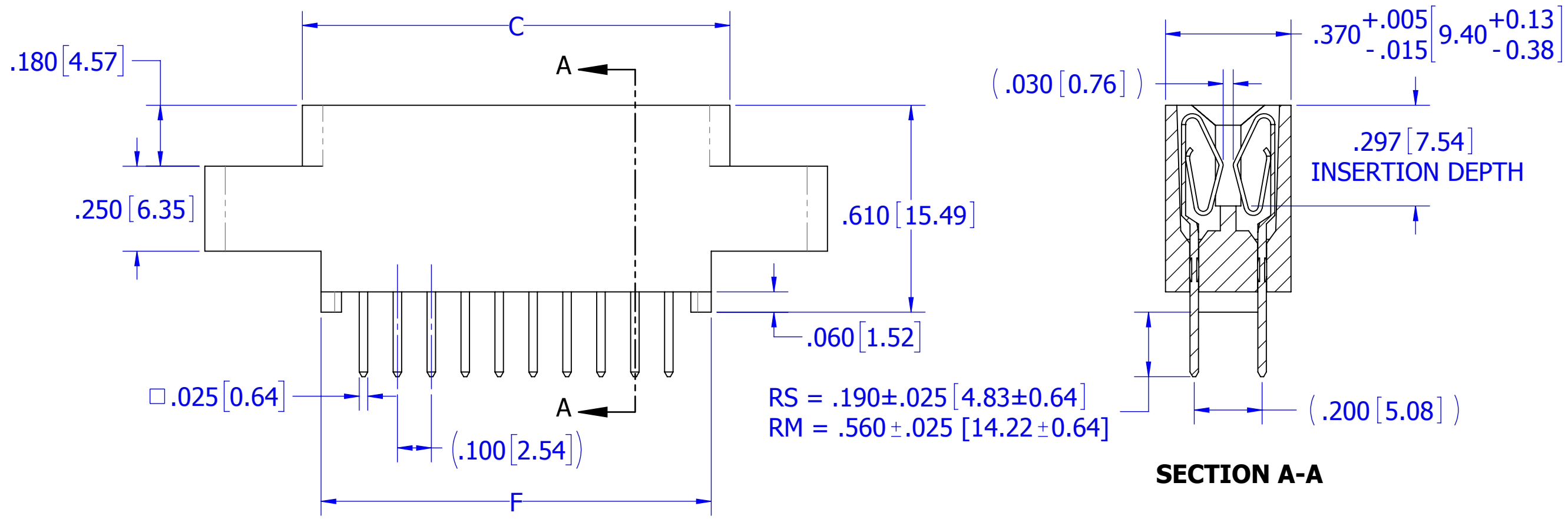
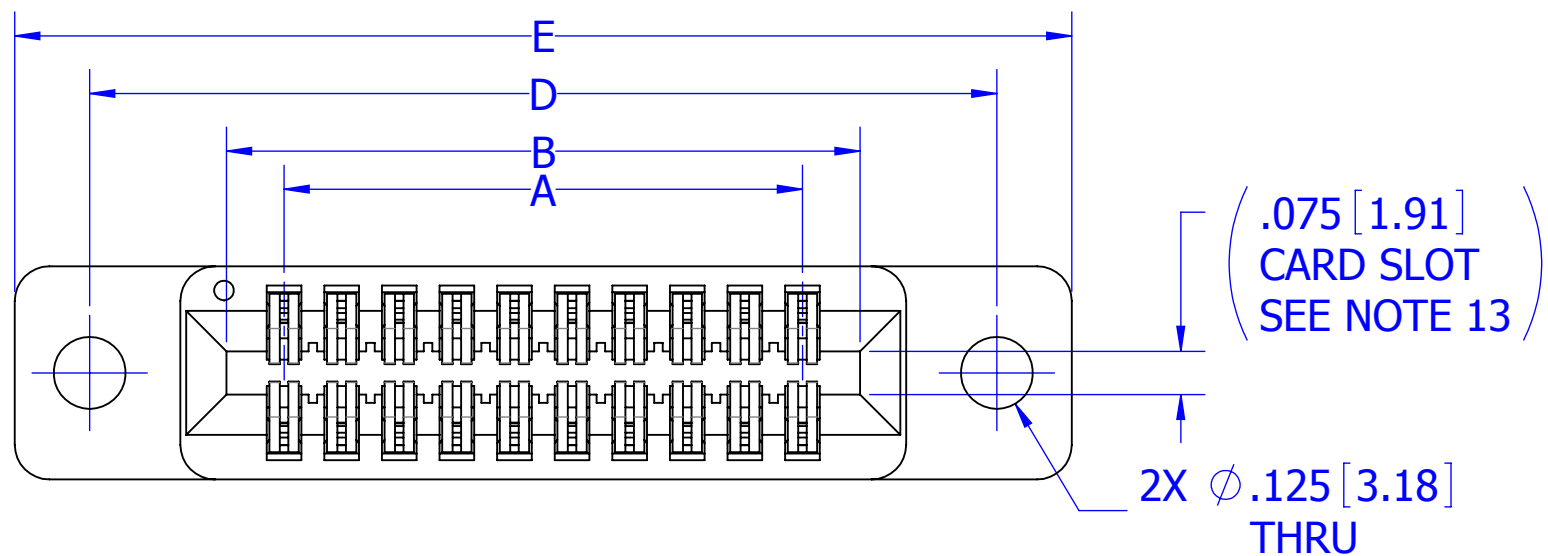


REVISIONS				
REV.	ECO. NO	DESCRIPTION	DATE	BY
E	3171	UPDATE DWG FORMAT, ADD 'Z' MOUNTING OPTION	3/4/2015	MG
F	3783	ADD "T" MATERIAL, MTL COLOR OPTION & MOLDED KEY IN-POSITION OPTION, OBSOLETE DWG 11259 (S328), 12299 (S1221), 12269 (S1732), 12458 (S1821), 12917 (S2067), 12516 (S1769), 12577 (S1442), 10834 (S346), 11994 (S1561)	12/13/2017	JH
H	3816	ADD OPTIONS FOR STD KEY BETWEEN POSITIONS AND .030" WIDE KEY BETWEEN POSITIONS, OBSOLETE DWG 10718 (S1172)	3/2/2018	JH



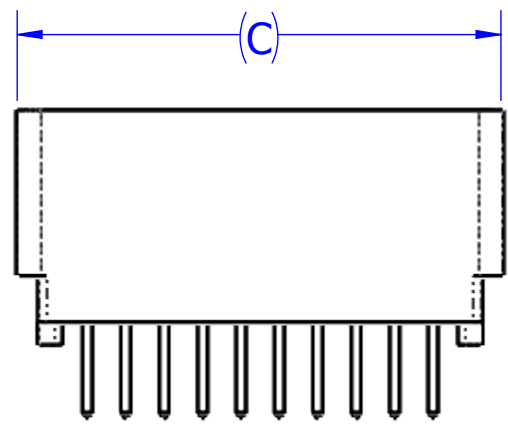
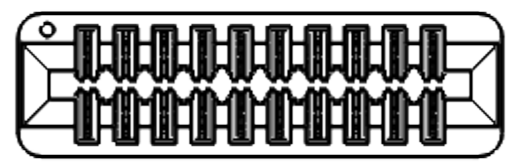
--- C --- DRSH
--- C --- DRMH

- NOTES:
- INSULATOR MATERIAL: SEE PART NUMBER CODING
 - CONTACT MATERIAL: SEE PART NUMBER CODING
 - PLATING: SEE PART NUMBER CODING
 - OPERATING TEMPERATURE: SEE PART NUMBER CODING
 - PROCESSING TEMP: SEE PART NUMBER CODING
 - UL FLAMMABILITY RATING: 94V-0
 - OPERATING VOLTAGE: 700 VAC
 - CURRENT RATING: 3 AMP
 - CONTACT RESISTANCE: 30 MILLI OHMS MAX
 - INSULATION RESISTANCE: 5000 MEGA OHMS
 - DURABILITY: 500 CYCLES MIN
 - CONNECTOR IDENTIFICATION: THE PART SHALL BE MARKED WITH A PART NUMBER AND LOT CODE
 - BOARD THICKNESS ACCOMMODATED: .062 ± .008 [1.57 ± 0.20]
 - INSERTION FORCE: 8 OZ MAX PER CONTACT PAIR WHEN USING A .062 [1.57] TEST BLADE
 - WITHDRAWAL FORCE: 1 OZ MIN PER CONTACT PAIR USING .062 [1.57] TEST BLADE
 - MODIFICATION: SEE PART NUMBER CODING

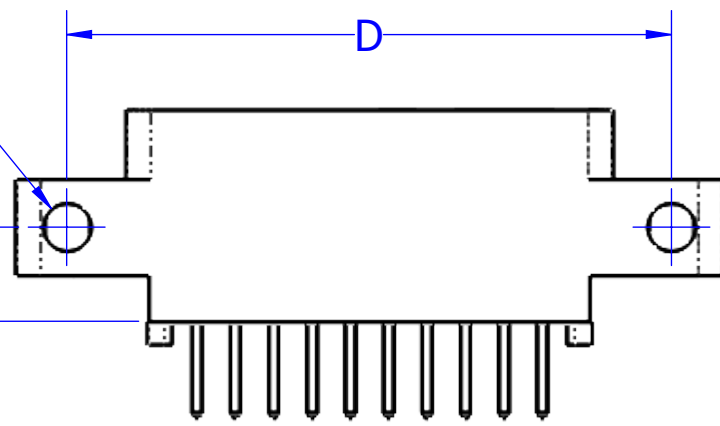
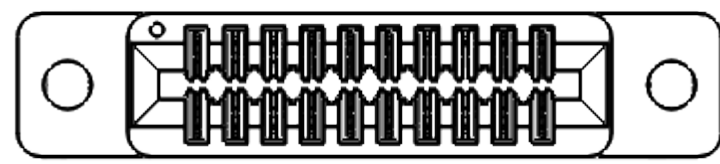


UNLESS OTHERWISE SPECIFIED: DIMENSIONS ARE IN INCHES [MM]		DRAWN	DATE	NAME	
			10/10/2011	JH	
TOLERANCES:					<small>THE INFORMATION HEREIN CONTAINS PROPRIETARY INFORMATION OF SULLINS ELECTRONICS AND IS NOT TO BE REPRODUCED, USED OR DISCLOSED TO OTHERS FOR ANY PURPOSE EXCEPT AS SPECIFICALLY AUTHORIZED IN WRITING BY AN OFFICER OF SULLINS ELECTRONICS.</small>
ANGULAR: ± 1°					
DECIMALS .XX = ± .02 [.5] .XXX = ± .005 [1.3] .XXXX = ± .0005 [0.13]					
TITLE		EDGE CARD, .100 CC, HP			REV
PART NUMBER		_C_D(RS, RM)_(S38, S81, S328)			H
SIZE	CAGE CODE	DWG. NO.			
C	54453	C10922			
SCALE: 3:1		SHEET 1 OF 6			

CUSTOMER COPY

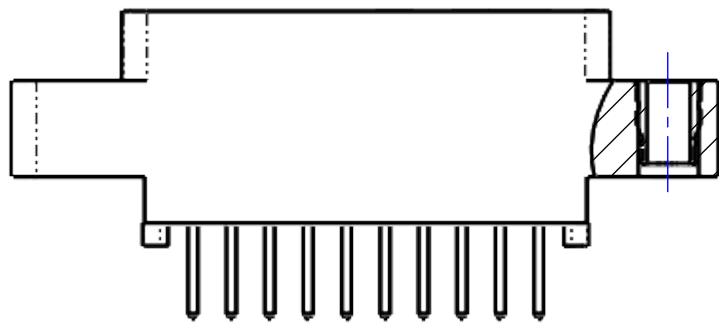
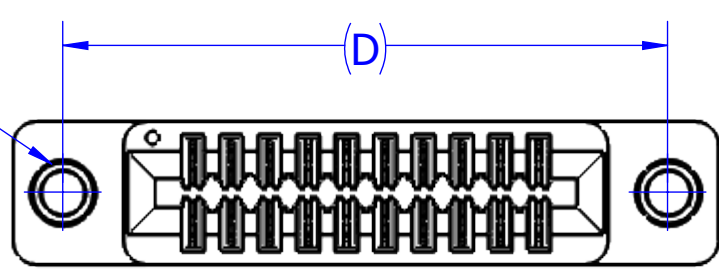


--- C --- DRSN
--- C --- DRMN

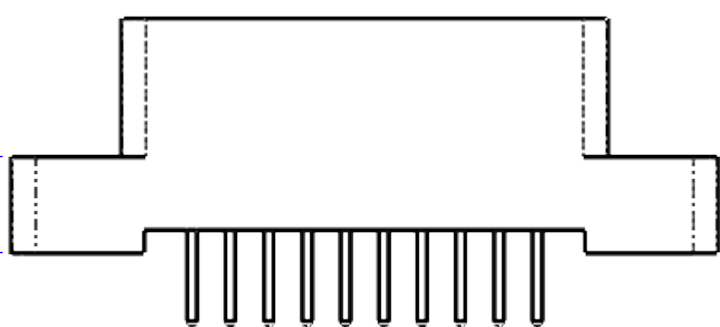
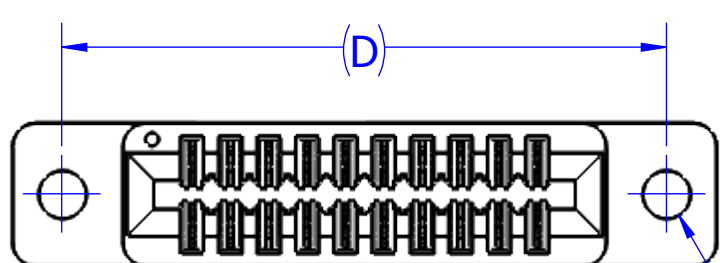


--- C --- DRSS
--- C --- DRMS

2X #4-40
THREADED
INSERT

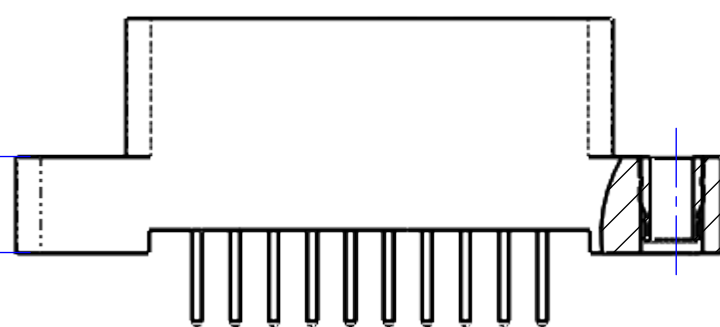
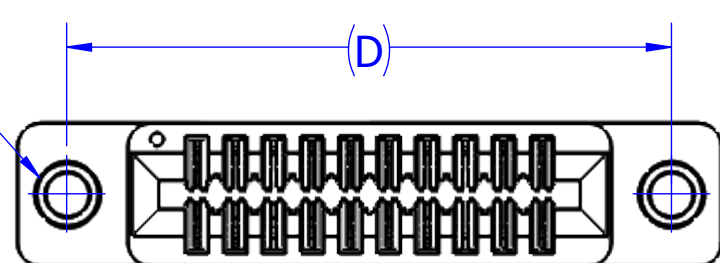


--- C --- DRSI
--- C --- DRMI



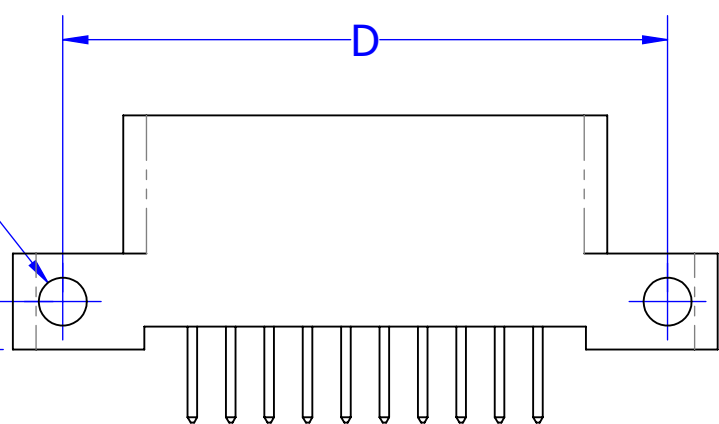
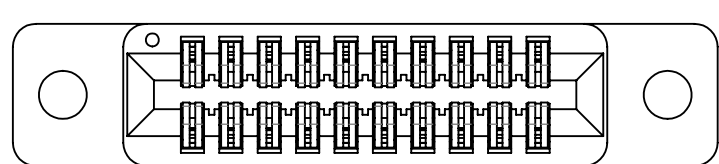
--- C --- DRSD
--- C --- DRMD

2X #4-40
THREADED
INSERT

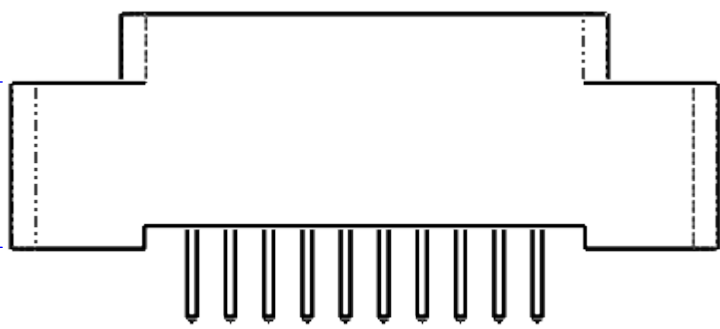
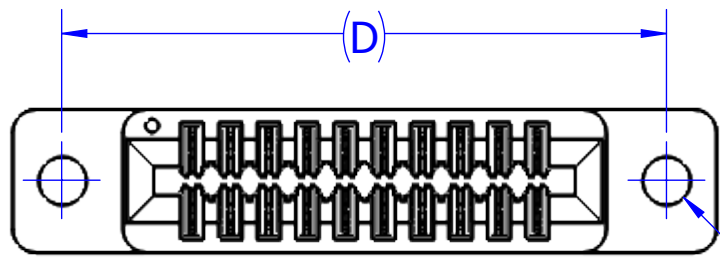


--- C --- DRST
--- C --- DRMT

2X Ø .125 [3.18]
THRU

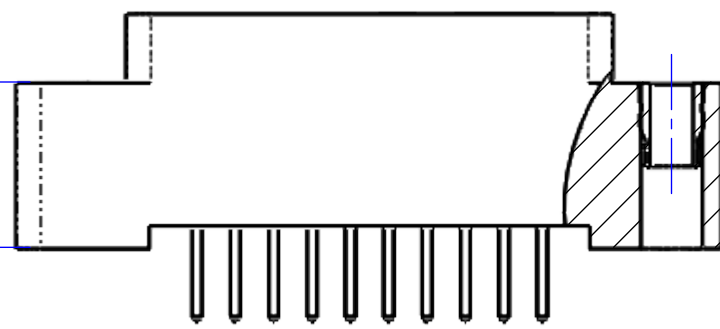
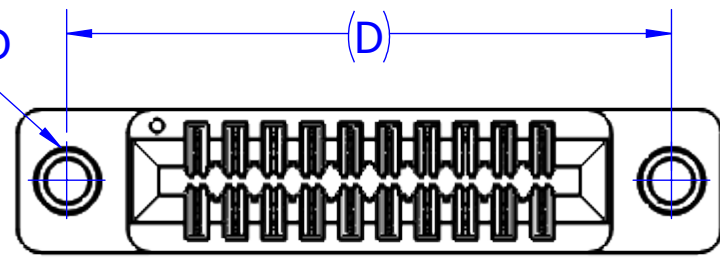


--- C --- DRSZ
--- C --- DRMZ



--- C --- DRSW
--- C --- DRMW

2X #4-40
THREADED
INSERT



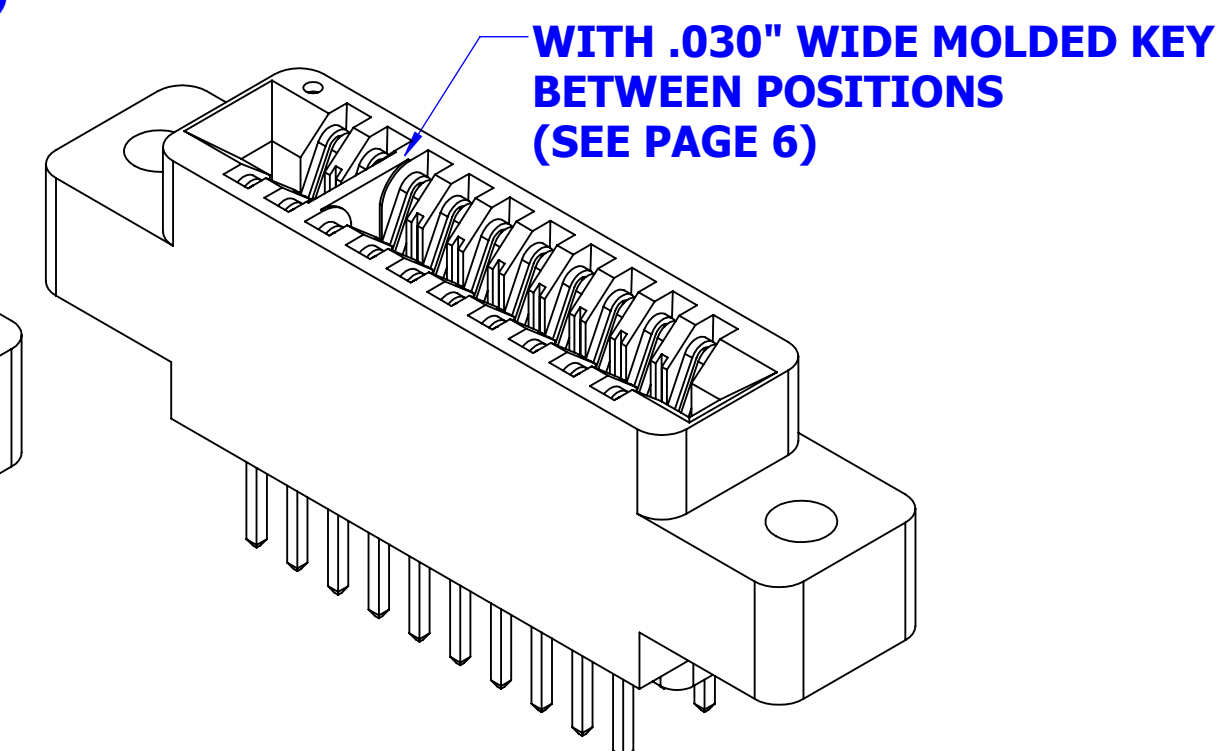
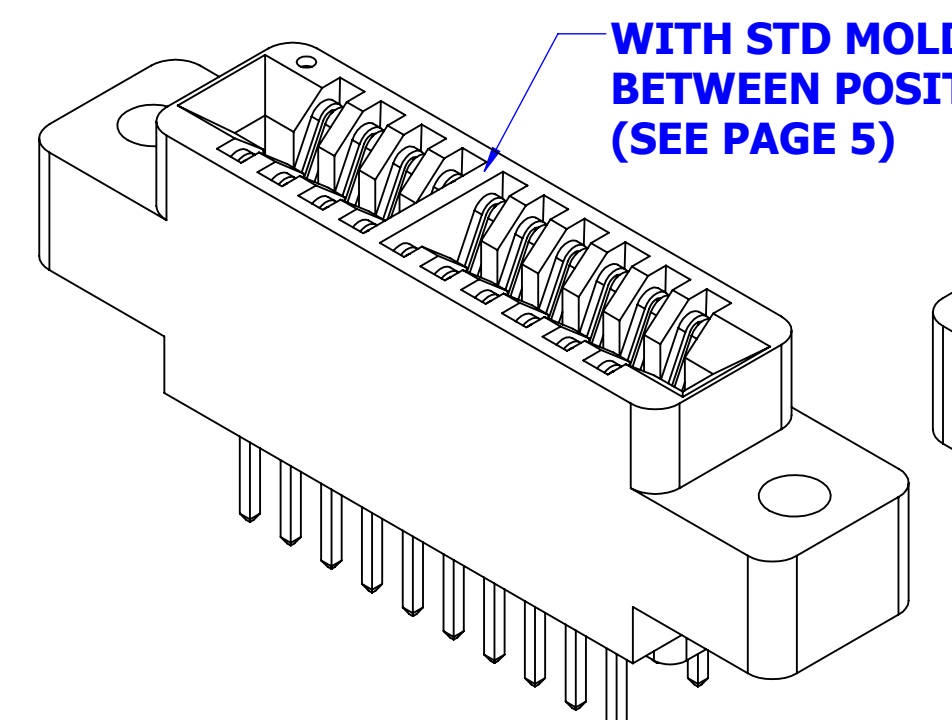
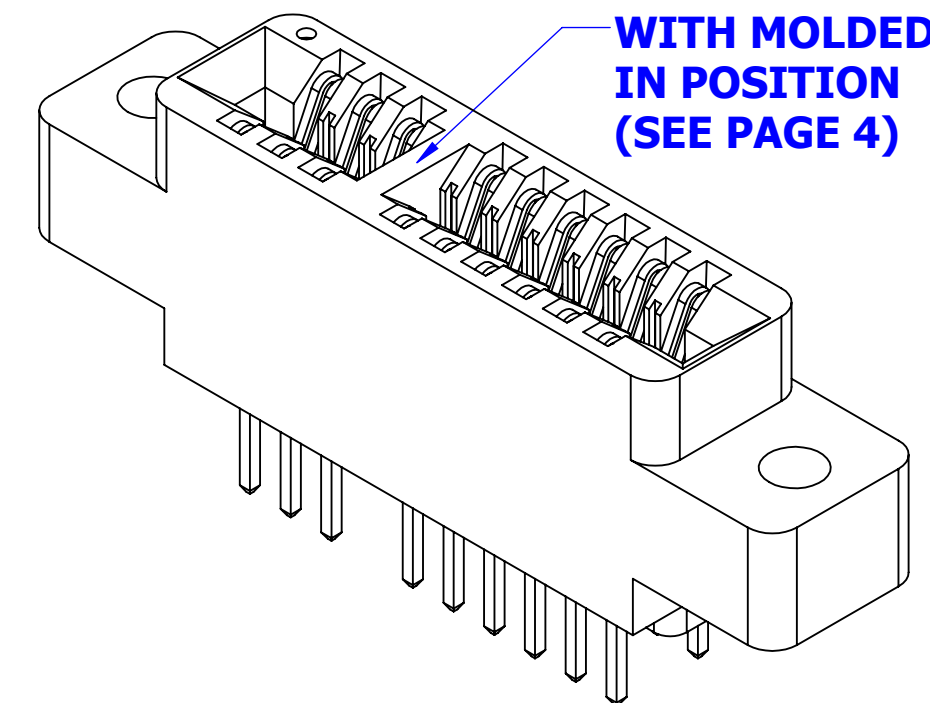
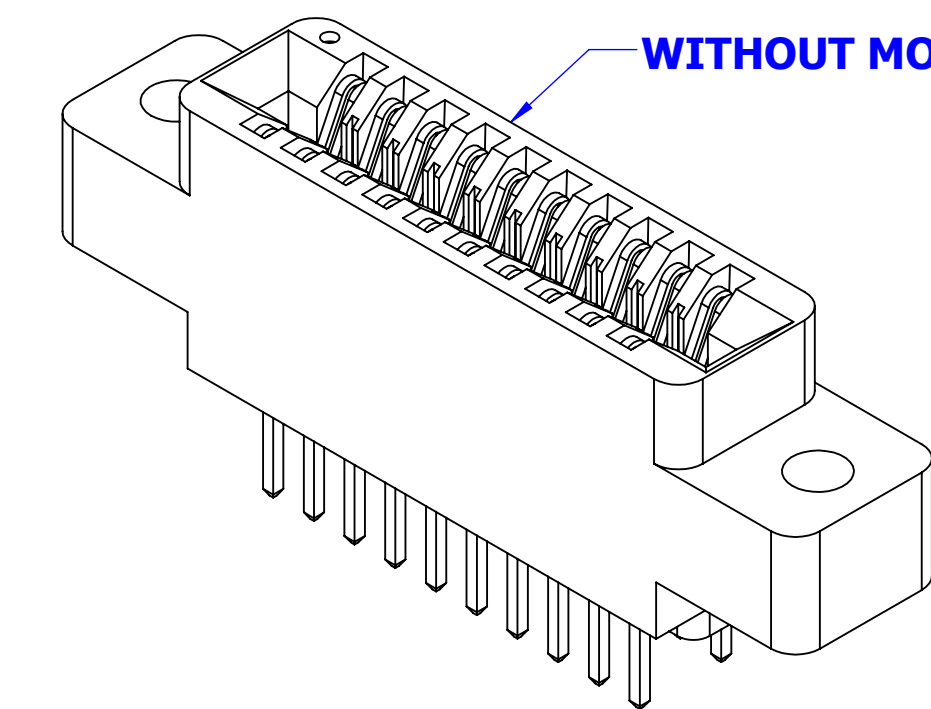
--- C --- DRSX
--- C --- DRMX



CUSTOMER COPY

UNLESS OTHERWISE SPECIFIED: DIMENSIONS ARE IN INCHES [MM]	DRAWN	DATE	NAME	
		10/10/2011	JH	
TOLERANCES: ANGULAR: ± 1° DECIMALS .XX=± .02 [.5] .XXX=± .005 [.13] .XXXX=± .0005 [.013]	THE INFORMATION HEREIN CONTAINS PROPRIETARY INFORMATION OF SULLINS ELECTRONICS AND IS NOT TO BE REPRODUCED, USED OR DISCLOSED TO OTHERS FOR ANY PURPOSE EXCEPT AS SPECIFICALLY AUTHORIZED IN WRITING BY AN OFFICER OF SULLINS ELECTRONICS.			TITLE
				EDGE CARD, .100 CC, HP
PART NUMBER				REV
--- C --- D(RS, RM)_(S38, S81, S328)				H
SIZE	CAGE CODE	DWG. NO.		
C	54453	C10922		
SCALE: 2:1			SHEET 2 OF 6	

PART NUMBER	POSITIONS	A±.008[±0.20]		B±.008[±0.20]		C±.015[±0.38]		D±.010[±0.25]		E±.020[±0.51]		F±.015[±0.38]	
		INCH	MM	INCH	MM	INCH	MM	INCH	MM	INCH	MM	INCH	MM
C06D(RS, RM)	6	0.500	12.70	0.700	17.78	0.860	21.84	1.175	29.85	1.435	36.45	0.750	19.05
C07D(RS, RM)	7	0.600	15.24	0.800	20.32	0.960	24.38	1.275	32.39	1.535	38.99	0.850	21.59
C08D(RS, RM)	8	0.700	17.78	0.900	22.86	1.060	26.92	1.375	34.93	1.635	41.53	0.950	24.13
C10D(RS, RM)	10	0.900	22.86	1.100	27.94	1.260	32.00	1.575	40.01	1.835	46.61	1.150	29.21
C12D(RS, RM)	12	1.100	27.94	1.300	33.02	1.460	37.08	1.775	45.09	2.035	51.69	1.350	34.29
C13D(RS, RM)	13	1.200	30.48	1.400	35.56	1.560	39.62	1.875	47.63	2.135	54.23	1.450	36.83
C15D(RS, RM)	15	1.400	35.56	1.600	40.64	1.760	44.70	2.075	52.71	2.335	59.31	1.650	41.91
C17D(RS, RM)	17	1.600	40.64	1.800	45.72	1.960	49.78	2.275	57.79	2.535	64.39	1.850	46.99
C18D(RS, RM)	18	1.700	43.18	1.900	48.26	2.060	52.32	2.375	60.33	2.635	66.93	1.950	49.53
C20D(RS, RM)	20	1.900	48.26	2.100	53.34	2.260	57.40	2.575	65.41	2.835	72.01	2.150	54.61
C22D(RS, RM)	22	2.100	53.34	2.300	58.42	2.460	62.48	2.775	70.49	3.035	77.09	2.350	59.69
C24D(RS, RM)	24	2.300	58.42	2.500	63.50	2.660	67.56	2.975	75.57	3.235	82.17	2.550	64.77
C25D(RS, RM)	25	2.400	60.96	2.600	66.04	2.760	70.10	3.075	78.11	3.335	84.71	2.650	67.31
C28D(RS, RM)	28	2.700	68.58	2.900	73.66	3.060	77.72	3.375	85.73	3.635	92.33	2.950	74.93
C29D(RS, RM)	29	2.800	71.12	3.000	76.20	3.160	80.26	3.475	88.27	3.735	94.87	3.050	77.47
C30D(RS, RM)	30	2.900	73.66	3.100	78.74	3.260	82.80	3.575	90.81	3.835	97.41	3.150	80.01
C31D(RS, RM)	31	3.000	76.20	3.200	81.28	3.360	85.34	3.675	93.35	3.935	99.95	3.250	82.55
C35D(RS, RM)	35	3.400	86.36	3.600	91.44	3.760	95.50	4.075	103.51	4.335	110.11	3.650	92.71
C36D(RS, RM)	36	3.500	88.90	3.700	93.98	3.860	98.04	4.175	106.05	4.435	112.65	3.750	95.25
C40D(RS, RM)	40	3.900	99.06	4.100	104.14	4.260	108.20	4.575	116.21	4.835	122.81	4.150	105.41
C43D(RS, RM)	43	4.200	106.68	4.400	111.76	4.560	115.82	4.875	123.83	5.135	130.43	4.450	113.03
C44D(RS, RM)	44	4.300	109.22	4.500	114.30	4.660	118.36	4.975	126.37	5.235	132.97	4.550	115.57
C49D(RS, RM)	49	4.800	121.92	5.000	127.00	5.160	131.06	5.475	139.07	5.735	145.67	5.050	128.27
C50D(RS, RM)	50	4.900	124.46	5.100	129.54	5.260	133.60	5.575	141.61	5.835	148.21	5.150	130.81
C55D(RS, RM)	55	5.400	137.16	5.600	142.24	5.760	146.30	6.075	154.31	6.335	160.91	5.650	143.51
C60D(RS, RM)	60	5.900	149.86	6.100	154.94	6.260	159.00	6.575	167.01	6.835	173.61	6.150	156.21
C61D(RS, RM)	61	6.000	152.40	6.200	157.48	6.360	161.54	6.675	169.55	6.935	176.15	6.250	158.75
C65D(RS, RM)	65	6.400	162.56	6.600	167.64	6.760	171.70	7.075	179.71	7.335	186.31	6.650	168.91
C70D(RS, RM)	70	6.900	175.26	7.100	180.34	7.260	184.40	7.575	192.41	7.835	199.01	7.150	181.61
C80D(RS, RM)	80	7.900	200.66	8.100	205.74	8.260	209.80	8.575	217.81	8.835	224.41	8.150	207.01
C90D(RS, RM)	90	8.900	226.06	9.100	231.14	9.260	235.20	9.575	243.21	9.835	249.81	9.150	232.41
C100D(RS, RM)	100	9.900	251.46	10.100	256.54	10.260	260.60	10.575	268.61	10.835	275.21	10.150	257.81



PART NUMBER CODING

C **D** **S**

MATERIALS (INSULATOR / CONTACT)

- E = BLUE PBT/PHOSPHOR BRONZE**
OPERATING TEMP: -65°C TO +125°C
PROCESSING TEMP: WAVE/MANUAL SOLDERING ONLY
- R = GREEN PPS/PHOSPHOR BRONZE**
OPERATING TEMP: -65°C TO +125°C
PROCESSING TEMP: 260°C MAX FOR 20 SECS
- G = BLACK PA9T/PHOSPHOR BRONZE**
OPERATING TEMP: -65°C TO +125°C
PROCESSING TEMP: 260°C MAX FOR 20 SECS
- H = BLUE PBT/BERYLLIUM COPPER**
OPERATING TEMP: -65°C TO +125°C
PROCESSING TEMP: WAVE/MANUAL SOLDERING ONLY
- A = GREEN PPS/BERYLLIUM COPPER**
OPERATING TEMP: -65°C TO +150°C
PROCESSING TEMP: 260°C MAX FOR 20 SECS
- J = BLACK PA9T/BERYLLIUM COPPER**
OPERATING TEMP: -65°C TO +150°C
PROCESSING TEMP: 260°C MAX FOR 20 SECS
- T = GREEN PPS/BERYLLIUM COPPER**
OPERATING TEMP: -65°C TO +175°C
PROCESSING TEMP: 260°C MAX FOR 20 SECS

MODIFICATION

- OMIT = STANDARD WITHOUT MOLDED KEY, EX: EBC22DRSN
- S38 = BLACK PBT WITHOUT MOLDED KEY (MATERIAL CODE E & H ONLY)
- S81 = GREEN PBT WITHOUT MOLDED KEY (MATERIAL CODE E & H ONLY)
- S328 = BROWN PPS WITHOUT MOLDED KEY (MATERIAL CODE R & A ONLY)
- OTHER S# FOR PARTS WITH MOLDED KEY FOR DEFAULT MATERIAL
- SEE PAGE 4 FOR LOCATION OF KEY IN POSITION
- SEE PAGE 5 FOR LOCATION OF STD KEY BETWEEN POSITIONS
- SEE PAGE 6 FOR LOCATION OF .030" WIDE KEY BETWEEN POSITIONS

MOUNTING STYLE

- H = .125" DIA. CLEARANCE HOLES
- I = #4-40 THREADED INSERT
- S = .125" DIA. SIDE MOUNTING
- N = NO MOUNTING EARS
- D = .250" EARS, FLUSH MOUNTING
- T = .250" EARS, FLUSH MOUNTING WITH # 4-40 THREADED INSERT
- Z = .250" EARS, FLUSH MOUNTING WITH .125 DIA SIDE HOLES
- W = .430" EARS, FLUSH MOUNTING
- X = .430" EARS, FLUSH MOUNTING WITH # 4-40 THREADED INSERT

TERMINATION TYPE

- RS = .190" TAIL LENGTH
- RM = .560" TAIL LENGTH

NUMBER OF POSITIONS (CONTACTS PER ROW)

PLATING

- ALL PLATINGS HAVE .000050" NICKEL UNDERPLATE
- CONTACT SURFACE
- G = .000010" GOLD
- Y = .000030" GOLD
- B = .000010" GOLD
- C = .000030" GOLD
- **E = .000100" PURE TIN, MATTE, OVERALL
- S = .000010" GOLD OVERALL
- M = .000030" GOLD
- TERMINATION
- .000005" GOLD
- .000005" GOLD
- .000100" PURE TIN, MATTE
- .000100" PURE TIN, MATTE
- .000010" GOLD OVERALL



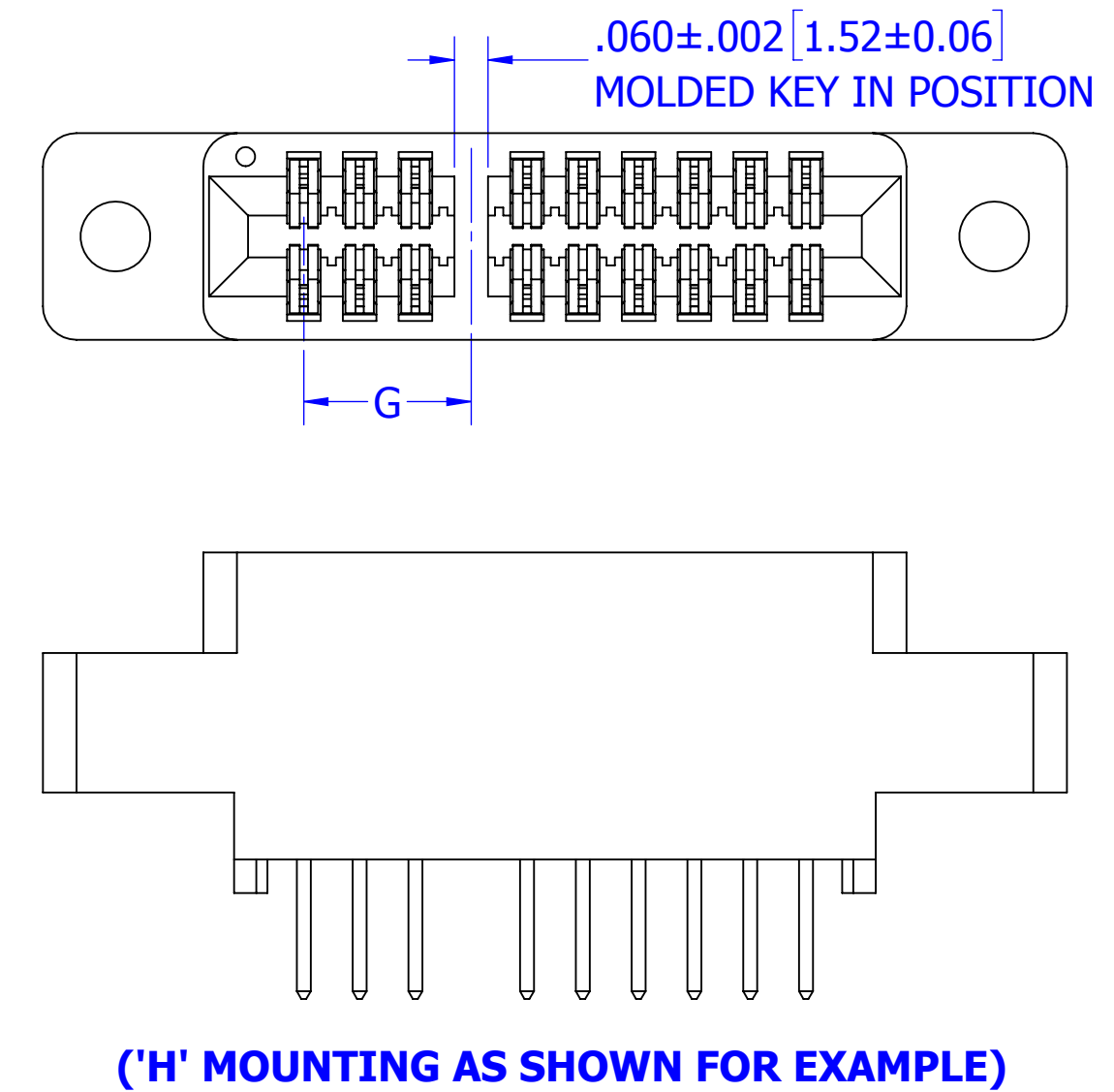
CUSTOMER COPY

UNLESS OTHERWISE SPECIFIED: DIMENSIONS ARE IN INCHES [MM]	DRAWN	DATE	NAME	
		10/10/2011	JH	
TOLERANCES:				<small>THE INFORMATION HEREIN CONTAINS PROPRIETARY INFORMATION OF SULLINS ELECTRONICS AND IS NOT TO BE REPRODUCED, USED OR DISCLOSED TO OTHERS FOR ANY PURPOSE EXCEPT AS SPECIFICALLY AUTHORIZED IN WRITING BY AN OFFICER OF SULLINS ELECTRONICS.</small>
ANGULAR: ± 1°				
DECIMALS .XX = ± .02 [.5] .XXX = ± .005 [.13] .XXXX = ± .0005 [.013]				
TITLE				EDGE CARD, .100 CC, HP
PART NUMBER				__C__D(RS, RM)_(S38, S81, S328)
SIZE	CAGE CODE	DWG. NO.	REV	
C	54453	C10922	H	
SCALE: 3:1				SHEET 3 OF 6

STANDARD LOCATION TABLE FOR KEY IN POSITION***

MOLDED KEY IN POSITION	MODIFICATION NUMBER (S#)	G±.008[±0.20]	
		INCH	MM
01		N/A	N/A
02	S2001	0.100	2.54
03	S1732	0.200	5.08
04	S1769	0.300	7.62
05	S2067	0.400	10.16
06	S1442	0.500	12.70
07	S1632	0.600	15.24
08	S1180	0.700	17.78
09	S1172	0.800	20.32
10	S1599	0.900	22.86
11		1.000	25.40
12	S1810	1.100	27.94
13	S1114	1.200	30.48
14	S1013	1.300	33.02
15	S1036	1.400	35.56
16	S2174	1.500	38.10
17	S1812	1.600	40.64
18		1.700	43.18
19		1.800	45.72
20	S1293	1.900	48.26
21	S1221	2.000	50.80
22	S1808	2.100	53.34
23		2.200	55.88
24	S1788	2.300	58.42
25	S2068	2.400	60.96
26		2.500	63.50
27		2.600	66.04
28	S1242	2.700	68.58
29		2.800	71.12
30		2.900	73.66
31		3.000	76.20
32		3.100	78.74
33		3.200	81.28
34		3.300	83.82
35		3.400	86.36

MOLDED KEY IN POSITION	MODIFICATION NUMBER (S#)	G±.008[±0.20]	
		INCH	MM
36		3.500	88.90
37		3.600	91.44
38	S1306	3.700	93.98
39		3.800	96.52
40		3.900	99.06
41	S1546	4.000	101.60
42	S1405	4.100	104.14
43		4.200	106.68
44		4.300	109.22
45		4.400	111.76
46		4.500	114.30
47		4.600	116.84
48		4.700	119.38
49		4.800	121.92
50	S1561	4.900	124.46
51	S1376	5.000	127.00
52	S2247	5.100	129.54
53		5.200	132.08
54		5.300	134.62
55		5.400	137.16
56		5.500	139.70
57		5.600	142.24
58	S346	5.700	144.78
59		5.800	147.32
60		5.900	149.86
61		6.000	152.40
62		6.100	154.94
63		6.200	157.48
64		6.300	160.02
65		6.400	162.56
66		6.500	165.10
67		6.600	167.64
68		6.700	170.18
69		6.800	172.72
70		6.900	175.26
LAST POSITION	S1192		



***CONNECTOR TOTAL POSITIONS MUST BE AT LEAST ONE POSITION LONGER THAN KEY LOCATION, USE S1192 FOR CONNECTORS WITH KEY IN LAST POSITION (EX: __C05DRSH-S1192 IS FOR 5-POSITION CONNECTOR WITH MOLDED KEY IN POSITION 5)

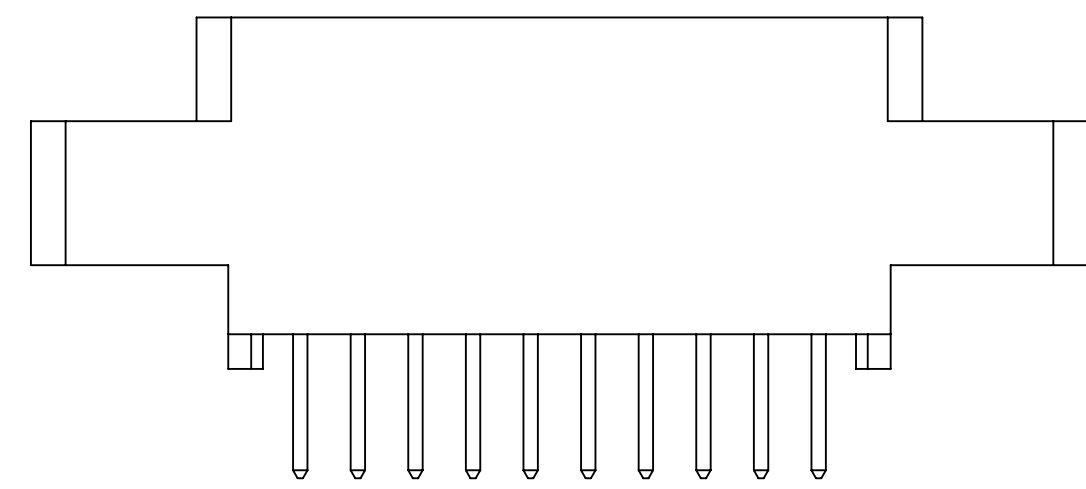
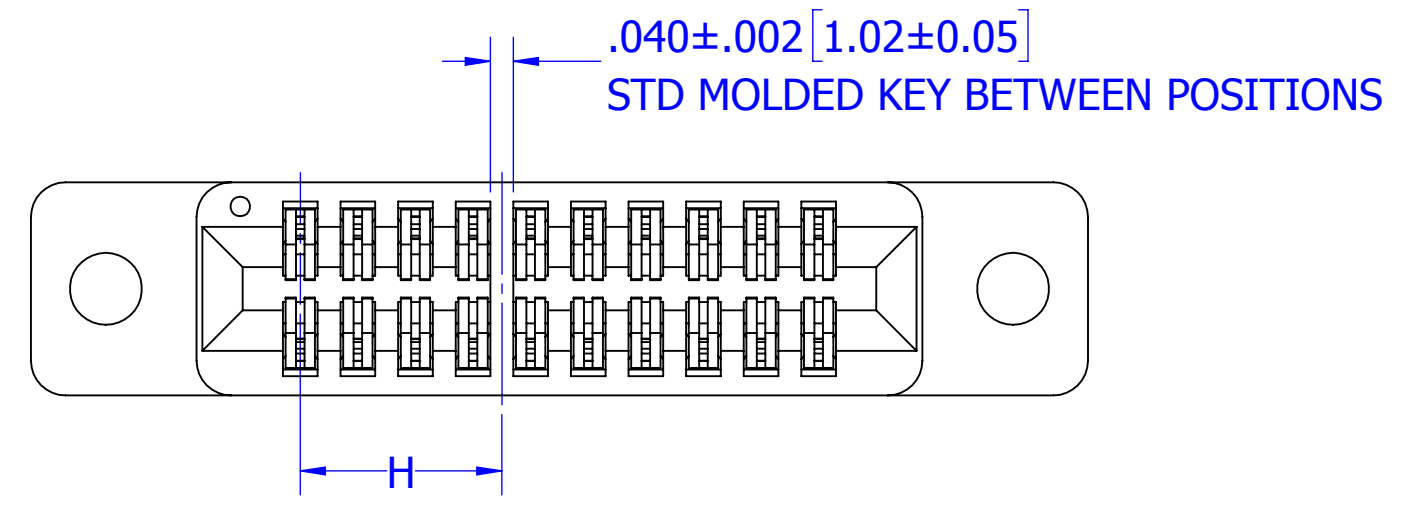
CUSTOMER COPY



UNLESS OTHERWISE SPECIFIED: DIMENSIONS ARE IN INCHES [MM]	DRAWN	DATE	NAME	
		10/10/2011	JH	
TOLERANCES: ANGULAR: ± 1° DECIMALS .XX=± .02 [.5] .XXX=± .005 [.13] .XXXX=± .0005 [.013]	<small>THE INFORMATION HEREIN CONTAINS PROPRIETARY INFORMATION OF SULLINS ELECTRONICS AND IS NOT TO BE REPRODUCED, USED OR DISCLOSED TO OTHERS FOR ANY PURPOSE EXCEPT AS SPECIFICALLY AUTHORIZED IN WRITING BY AN OFFICER OF SULLINS ELECTRONICS.</small>			TITLE EDGE CARD, .100 CC, HP, KEY IN POSITION
	PART NUMBER __C__(DRS, DRM)_-S_____			SIZE C
			DWG. NO. C10922	REV H
			SCALE: 3:1	SHEET 4 OF 6

STANDARD LOCATION TABLE FOR KEY BETWEEN POSITIONS***

MOLDED KEY BETWEEN POSITIONS	H±.008[±0.20]		MODIFICATION NUMBER (S#) FOR STD COLOR WITH STD KEY BETWEEN POSITIONS ONLY
	INCH	MM	
1 & 2	0.050	1.27	S1061
2 & 3	0.150	3.81	S688
3 & 4	0.250	6.35	S715
4 & 5	0.350	8.89	S797
5 & 6	0.450	11.43	S1032
6 & 7	0.550	13.97	S2379
7 & 8	0.650	16.51	S2038
8 & 9	0.750	19.05	
9 & 10	0.850	21.59	
10 & 11	0.950	24.13	S1245
11 & 12	1.050	26.67	
12 & 13	1.150	29.21	
13 & 14	1.250	31.75	
14 & 15	1.350	34.29	
15 & 16	1.450	36.83	
16 & 17	1.550	39.37	
17 & 18	1.650	41.91	
18 & 19	1.750	44.45	S2386
19 & 20	1.850	46.99	S2379
20 & 21	1.950	49.53	S807
21 & 22	2.050	52.07	
22 & 23	2.150	54.61	
23 & 24	2.250	57.15	
24 & 25	2.350	59.69	
25 & 26	2.450	62.23	S1105
26 & 27	2.550	64.77	
27 & 28	2.650	67.31	S1073
28 & 28	2.750	69.85	
29 & 30	2.850	72.39	
30 & 31	2.950	74.93	S1688
31 & 32	3.050	77.47	
32 & 33	3.150	80.01	S1440
33 & 34	3.250	82.55	
34 & 35	3.350	85.09	S1215
35 & 36	3.450	87.63	S948
36 & 37	3.550	90.17	
37 & 38	3.650	92.71	
38 & 39	3.750	95.25	
39 & 40	3.850	97.79	
40 & 41	3.950	100.33	S947
41 & 42	4.050	102.87	S811
42 & 43	4.150	105.41	
43 & 44	4.250	107.95	
44 & 45	4.350	110.49	
45 & 46	4.450	113.03	S946
46 & 47	4.550	115.57	
47 & 48	4.650	118.11	
48 & 49	4.750	120.65	S808
49 & 50	4.850	123.19	
50 & 51	4.950	125.73	
51 & 52	5.050	128.27	
52 & 53	5.150	130.81	
53 & 54	5.250	133.35	
54 & 55	5.350	135.89	
55 & 56	5.450	138.43	
56 & 57	5.550	140.97	
57 & 58	5.650	143.51	
58 & 59	5.750	146.05	
59 & 60	5.850	148.59	



('H' MOUNTING AS SHOWN FOR EXAMPLE)

***CONNECTOR TOTAL POSITIONS MUST BE AT LEAST ONE POSITION LONGER THAN KEY LOCATION

CUSTOMER COPY

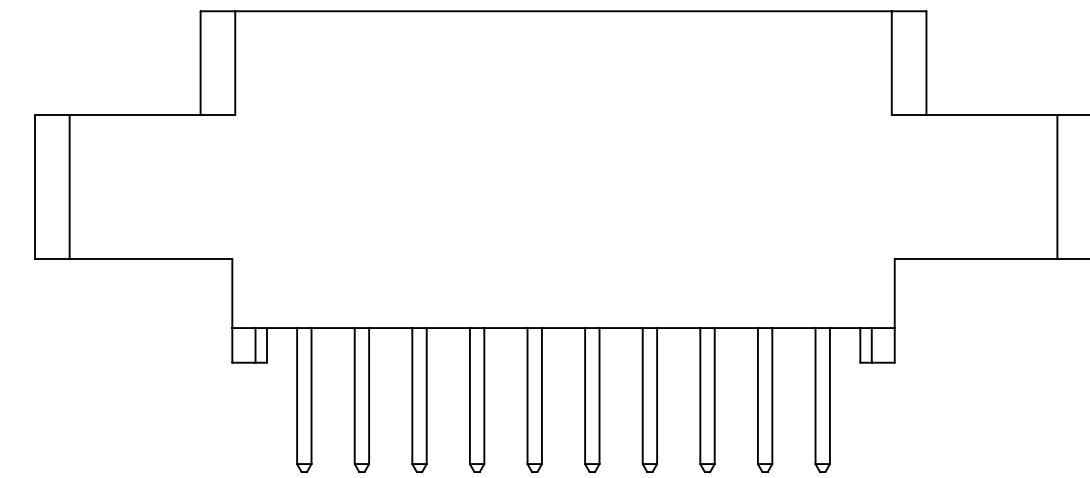
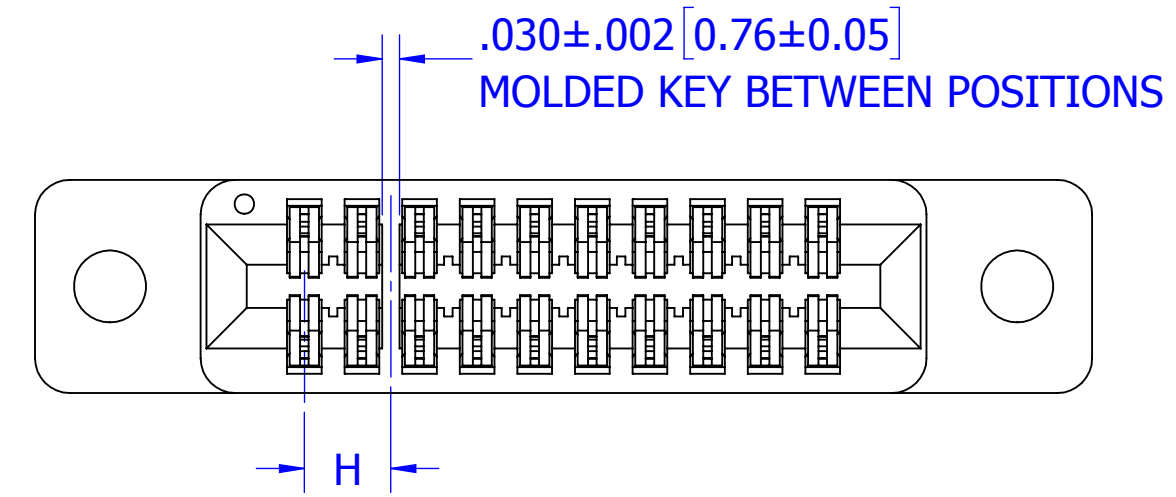


UNLESS OTHERWISE SPECIFIED: DIMENSIONS ARE IN INCHES [MM]		DRAWN	DATE	NAME	
			10/10/2011	JH	
TOLERANCES:		<small>THE INFORMATION HEREIN CONTAINS PROPRIETARY INFORMATION OF SULLINS ELECTRONICS AND IS NOT TO BE REPRODUCED, USED OR DISCLOSED TO OTHERS FOR ANY PURPOSE EXCEPT AS SPECIFICALLY AUTHORIZED IN WRITING BY AN OFFICER OF SULLINS ELECTRONICS.</small>			
ANGULAR: ± 1°		TITLE			
DECIMALS		EDGE CARD, .100 CC, HP, STD KEY BETWEEN POSITIONS			
.XX= ± .02 [.5]		PART NUMBER			
.XXX= ± .005 [.13]		_C_D(RS, RM)_S_			
.XXXX= ± .0005 [.013]		SIZE	CAGE CODE	DWG. NO.	REV
		C	54453	C10922	H
		SCALE: 3:1		SHEET 5 OF 6	

LOCATION TABLE FOR .030" WIDE KEY BETWEEN POSITIONS***

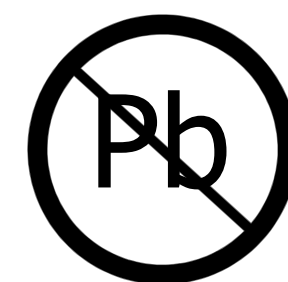
MOLDED KEY BETWEEN POSITIONS	H±.008[±0.20]		MODIFICATION NUMBER (S#) FOR STD COLOR WITH .030" WIDE KEY BETWEEN POSITIONS ONLY
	INCH	MM	
1 & 2	0.050	1.27	
2 & 3	0.150	3.81	S1663
3 & 4	0.250	6.35	
4 & 5	0.350	8.89	
5 & 6	0.450	11.43	S2381
6 & 7	0.550	13.97	
7 & 8	0.650	16.51	
8 & 9	0.750	19.05	
9 & 10	0.850	21.59	
10 & 11	0.950	24.13	
11 & 12	1.050	26.67	
12 & 13	1.150	29.21	
13 & 14	1.250	31.75	S1951
14 & 15	1.350	34.29	
15 & 16	1.450	36.83	
16 & 17	1.550	39.37	
17 & 18	1.650	41.91	
18 & 19	1.750	44.45	
19 & 20	1.850	46.99	
20 & 21	1.950	49.53	
21 & 22	2.050	52.07	
22 & 23	2.150	54.61	
23 & 24	2.250	57.15	
24 & 25	2.350	59.69	
25 & 26	2.450	62.23	
26 & 27	2.550	64.77	
27 & 28	2.650	67.31	
28 & 28	2.750	69.85	
29 & 30	2.850	72.39	
30 & 31	2.950	74.93	
31 & 32	3.050	77.47	
32 & 33	3.150	80.01	
33 & 34	3.250	82.55	
34 & 35	3.350	85.09	
35 & 36	3.450	87.63	
36 & 37	3.550	90.17	
37 & 38	3.650	92.71	
38 & 39	3.750	95.25	
39 & 40	3.850	97.79	
40 & 41	3.950	100.33	
41 & 42	4.050	102.87	
42 & 43	4.150	105.41	
43 & 44	4.250	107.95	
44 & 45	4.350	110.49	
45 & 46	4.450	113.03	
46 & 47	4.550	115.57	
47 & 48	4.650	118.11	
48 & 49	4.750	120.65	
49 & 50	4.850	123.19	
50 & 51	4.950	125.73	
51 & 52	5.050	128.27	
52 & 53	5.150	130.81	
53 & 54	5.250	133.35	
54 & 55	5.350	135.89	
55 & 56	5.450	138.43	
56 & 57	5.550	140.97	
57 & 58	5.650	143.51	
58 & 59	5.750	146.05	

***CONNECTOR TOTAL POSITIONS MUST BE AT LEAST ONE POSITION LONGER THAN KEY LOCATION



MATES WITH SULLINS .100" CONTACT CENTER MALE EDGE CARD ('H' MOUNTING AS SHOWN FOR EXAMPLE)

CUSTOMER COPY



RoHS COMPLIANT

UNLESS OTHERWISE SPECIFIED: DIMENSIONS ARE IN INCHES [MM]		DRAWN	DATE	NAME	
			10/10/2011	JH	
TOLERANCES:		<small>THE INFORMATION HEREIN CONTAINS PROPRIETARY INFORMATION OF SULLINS ELECTRONICS AND IS NOT TO BE REPRODUCED, USED OR DISCLOSED TO OTHERS FOR ANY PURPOSE EXCEPT AS SPECIFICALLY AUTHORIZED IN WRITING BY AN OFFICER OF SULLINS ELECTRONICS.</small>			
ANGULAR: ± 1°		TITLE			
DECIMALS		EDGE CARD, .100 CC, HP .030" WIDE KEY BETWEEN POSITIONS			
.XX= ± .02 [.5]		PART NUMBER			
.XXX= ± .005 [.13]		_C_D(RS, RM)_S_			
.XXXX= ± .0005 [.013]		SIZE	CAGE CODE	DWG. NO.	REV
		C	54453	C10922	H
		SCALE: 3:1		SHEET 6 OF 6	