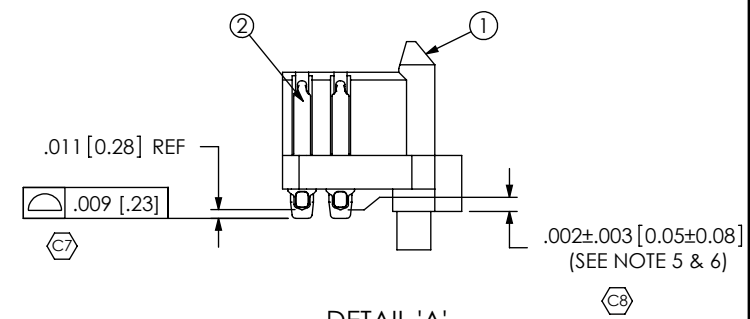
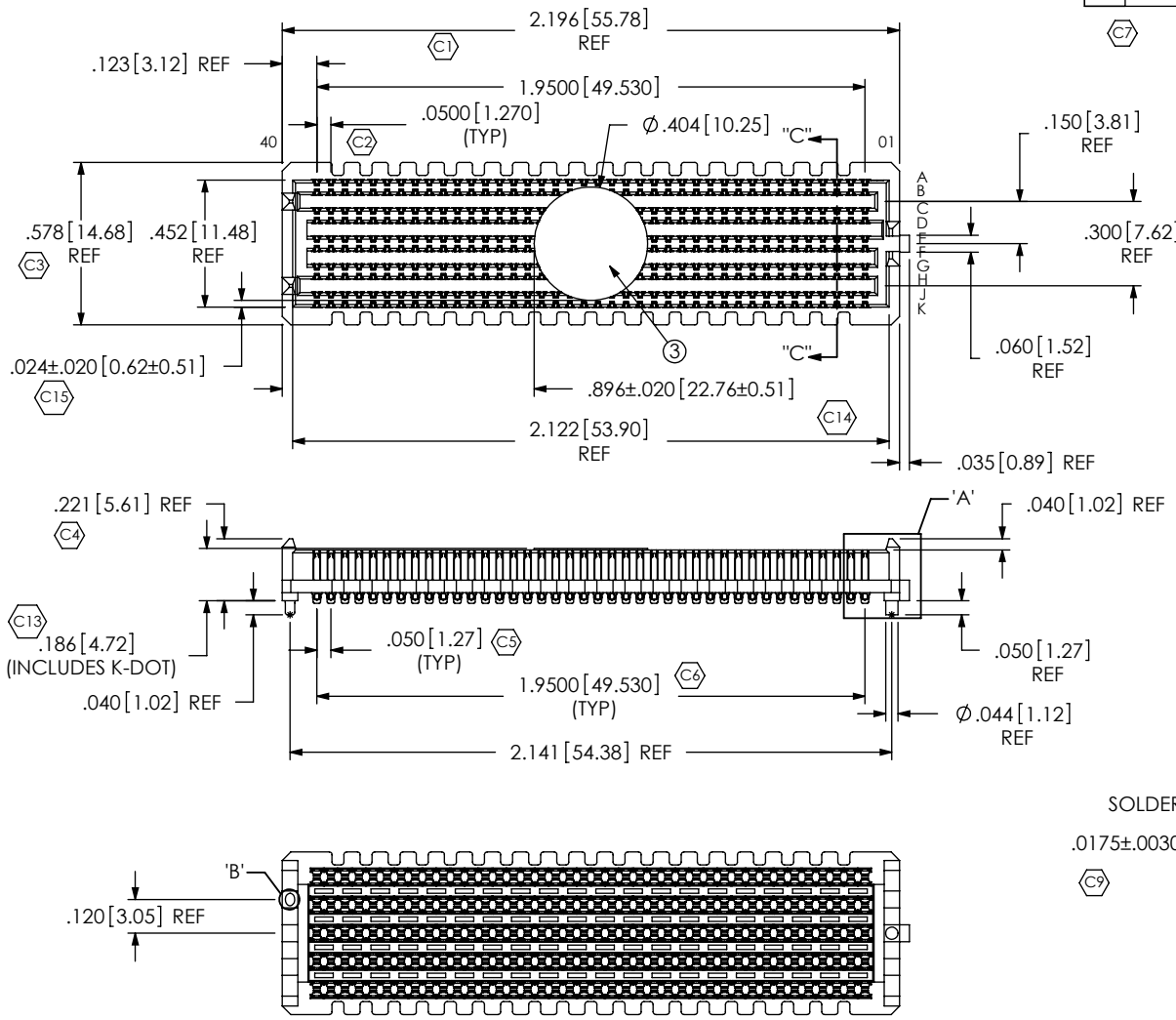


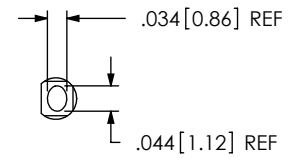
REVISION H

| REV | DESCRIPTION |
|-----|-------------------------|
| H | DO NOT SCALE DRAWING |
| G | NEW SUB-T-1M36-02.0-S-2 |
| F | NEW SUB-T-1M36-02.0-S-2 |
| E | NEW SUB-T-1M36-02.0-S-2 |
| D | NEW SUB-T-1M36-02.0-S-2 |
| C | NEW SUB-T-1M36-02.0-S-2 |
| B | NEW SUB-T-1M36-02.0-S-2 |
| A | NEW SUB-T-1M36-02.0-S-2 |

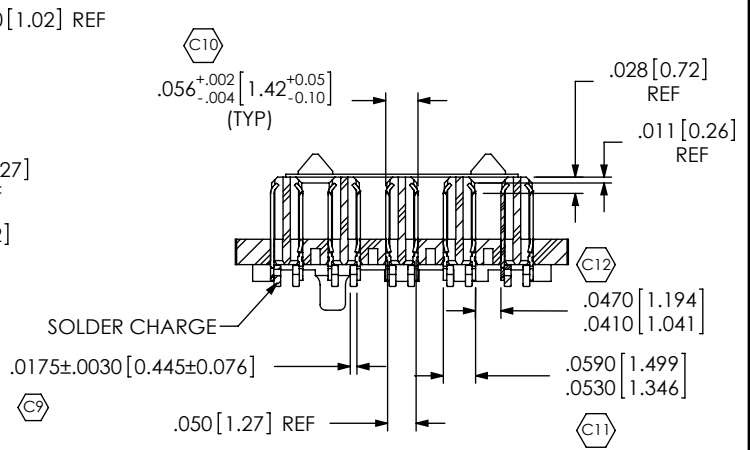
- NOTES:
- VITA 57 CONNECTOR.
 - ⊕ REPRESENTS A CRITICAL DIMENSION.
 - MINIMUM PUSHOUT FORCE: .75 LBS.
 - ATTACH LABEL "SEAX-0001" TO EACH TAPE & REEL PACKAGE.
 - MAXIMUM ROW TO ROW VARIATION .003[0.08].
 - DIMENSION C8 MUST BE MEASURED IN THE FOUR OUTSIDE CORNERS USING INSPECTION FIXTURE AT-1817-836-1, USE CO-AU-WI-2003-M FOR PROCESS.
 - PARTS TO BE PACKAGED IN TAPE & REEL.



DETAIL 'A'
SCALE 4:1



DETAIL 'B'
SCALE 3:1



SECTION 'C'-'C'
SCALE 3:1

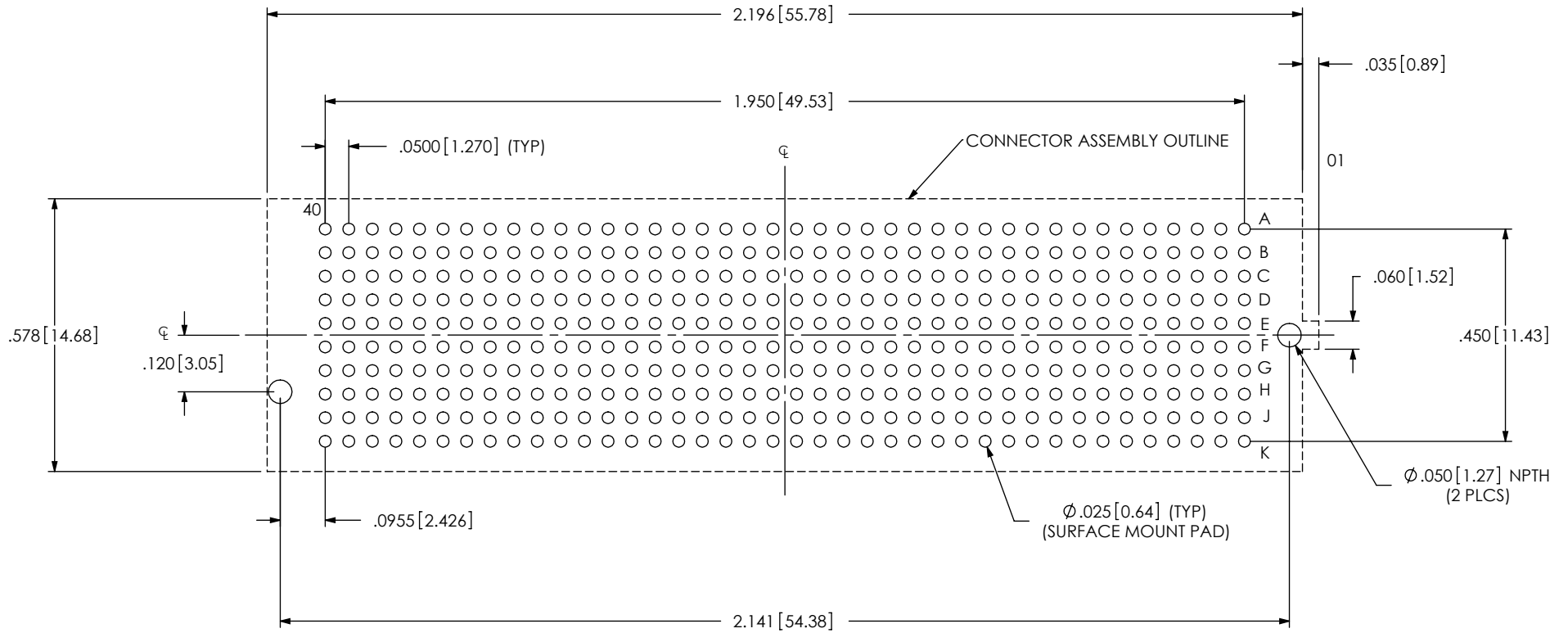
BY SIGNING THIS DOCUMENT YOU ARE ACCEPTING THE CONDITIONS SET WITHIN. YOUR REQUIREMENTS MUST BE LISTED WITHIN THIS DRAWING. WHERE NO DIRECTION FROM THE CUSTOMER IS IDENTIFIED SAMTEC'S PROCESS REQUIREMENTS WILL BE USED.

DATE: _____
 COMPANY: _____
 CUSTOMER SIGNATURE: _____
 PRINTED NAME: _____
 PHONE NO.: _____
 EXCEPTIONS: _____

| NON STANDARD | | UNLESS OTHERWISE SPECIFIED, DIMENSIONS ARE IN INCHES. TOLERANCES ARE: | PROPRIETARY NOTE |
|--------------|---|--|--|
| COMPONENT | | DECIMALS ANGLES | THIS DOCUMENT CONTAINS INFORMATION CONFIDENTIAL AND PROPRIETARY TO SAMTEC, INC. AND SHALL NOT BE REPRODUCED OR TRANSFERRED TO OTHER DOCUMENTS OR DISCLOSED TO OTHERS OR USED FOR ANY PURPOSE OTHER THAN THAT WHICH IT WAS OBTAINED WITHOUT THE EXPRESSED WRITTEN CONSENT OF SAMTEC, INC. |
| ASSEMBLY | | .XX: ±.01 [.3] 2° | |
| TOOLING | | .XXX: ±.005 [.13] | |
| PROCESS | | .XXXX: ±.0020 [.051] | |
| PACKAGING | | DO NOT SCALE DRAWING SHEET SCALE: 1.5:1 | |
| OTHER | X | PLATING: CONTACT AREA: .000030 GOLD OVER .000050 NICKEL REMAINDER: .000200 REF TIN OVER .000050 NICKEL | |
| | | | 520 PARK EAST BLVD. NEW ALBANY, IN 47150 PHONE: 812-944-6733 FAX: 812-948-5047 e-Mail: info@SAMTEC.com code: 55322 |
| | | | DESCRIPTION: .050 PITCH TERMINAL ARRAY ASM. |
| | | | DWG. NO. ASP-134602-01 |
| | | | BY: G. PURVIS 10/31/2007 SHEET 1 OF 4 |

| ITEM NO. | PART NUMBER | QUANTITY | MATERIAL |
|----------|-------------------------|----------|---------------------------------|
| 1 | SEAM-40-02.0-10-A | 1.0000 | LCP UL 94 V0, COLOR: BLACK |
| 2 | NEW-SUB-T-1M36-02.0-S-2 | 400.00 | COPPER ALLOY / LEAD FREE SOLDER |
| 3 | K-DOT-.404-.500-.005 | 1.0000 | POLYIMIDE FILM |
| 4 | CT-SEAM032MS | 1.0000 | CONDUCTIVE POLYMER |

H



ALL DIMENSIONS ARE SYMMETRIC ABOUT CENTERLINE

[H]

| CRITICAL DIMENSION INSPECTION INSTRUCTION TABLE | |
|---|---|
| ASSEMBLY OPERATION | IN-PROCESS INSPECTION |
| FILL SUB-T-1M36-02.0-S-2 | C3, C4, C5, C6, C7, C8, C9, C10, C11, C12 |
| ADD K DOT | C13, C14, C15 |

PROPRIETARY NOTE
 THIS DOCUMENT CONTAINS INFORMATION CONFIDENTIAL AND PROPRIETARY TO SAMTEC, INC. AND SHALL NOT BE REPRODUCED OR TRANSFERRED TO OTHER DOCUMENTS OR DISCLOSED TO OTHERS OR USED FOR ANY PURPOSE OTHER THAN THAT WHICH IT WAS OBTAINED WITHOUT THE EXPRESSED WRITTEN CONSENT OF SAMTEC, INC.

DO NOT SCALE DRAWING

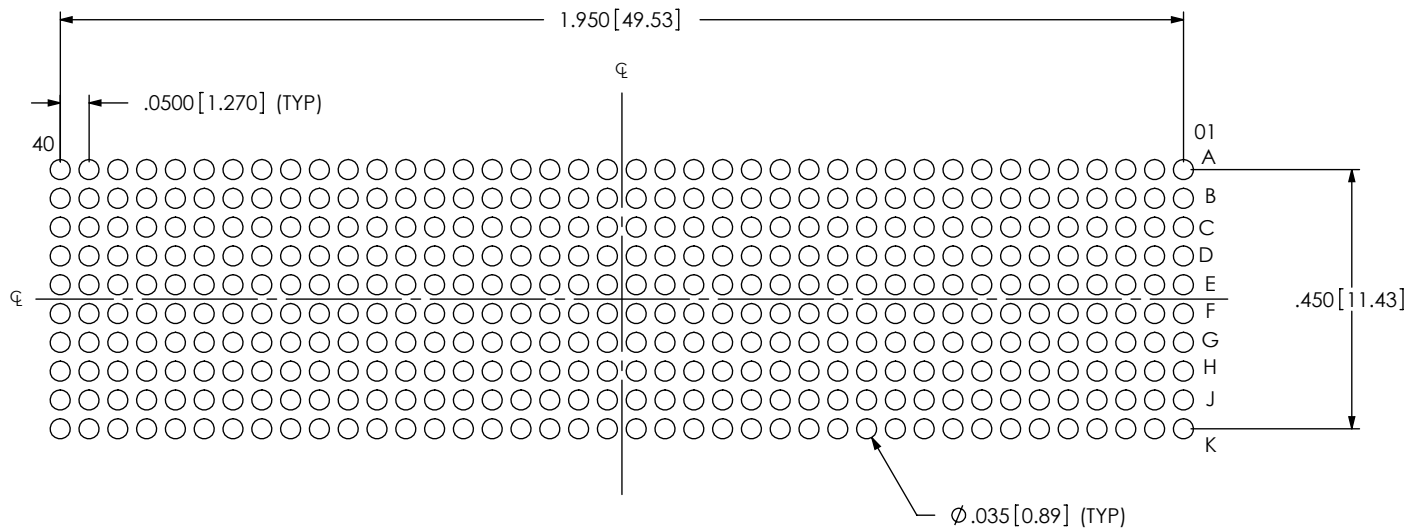
SHEET SCALE: 3:1



520 PARK EAST BLVD, NEW ALBANY, IN 47150
 PHONE: 812-944-6733 FAX: 812-948-5047
 e-Mail: info@SAMTEC.com code: 55322

| | |
|---------------|--------------------------------|
| DESCRIPTION: | .050 PITCH TERMINAL ARRAY ASM. |
| DWG. NO. | ASP-134602-01 |
| BY: G. PURVIS | 10/31/2007 |
| SHEET 2 OF 4 | |

NOTES:
 STENCIL THICKNESS TO BE .0060[0.152].



ALL DIMENSIONS ARE SYMMETRIC ABOUT CENTERLINE.

PROPRIETARY NOTE
 THIS DOCUMENT CONTAINS INFORMATION
 CONFIDENTIAL AND PROPRIETARY TO
 SAMTEC, INC. AND SHALL NOT BE REPRODUCED
 OR TRANSFERRED TO OTHER DOCUMENTS OR
 DISCLOSED TO OTHERS OR USED FOR ANY
 PURPOSE OTHER THAN THAT WHICH IT WAS
 OBTAINED WITHOUT THE EXPRESSED WRITTEN
 CONSENT OF SAMTEC, INC.

DO NOT SCALE DRAWING

SHEET SCALE: 3:1

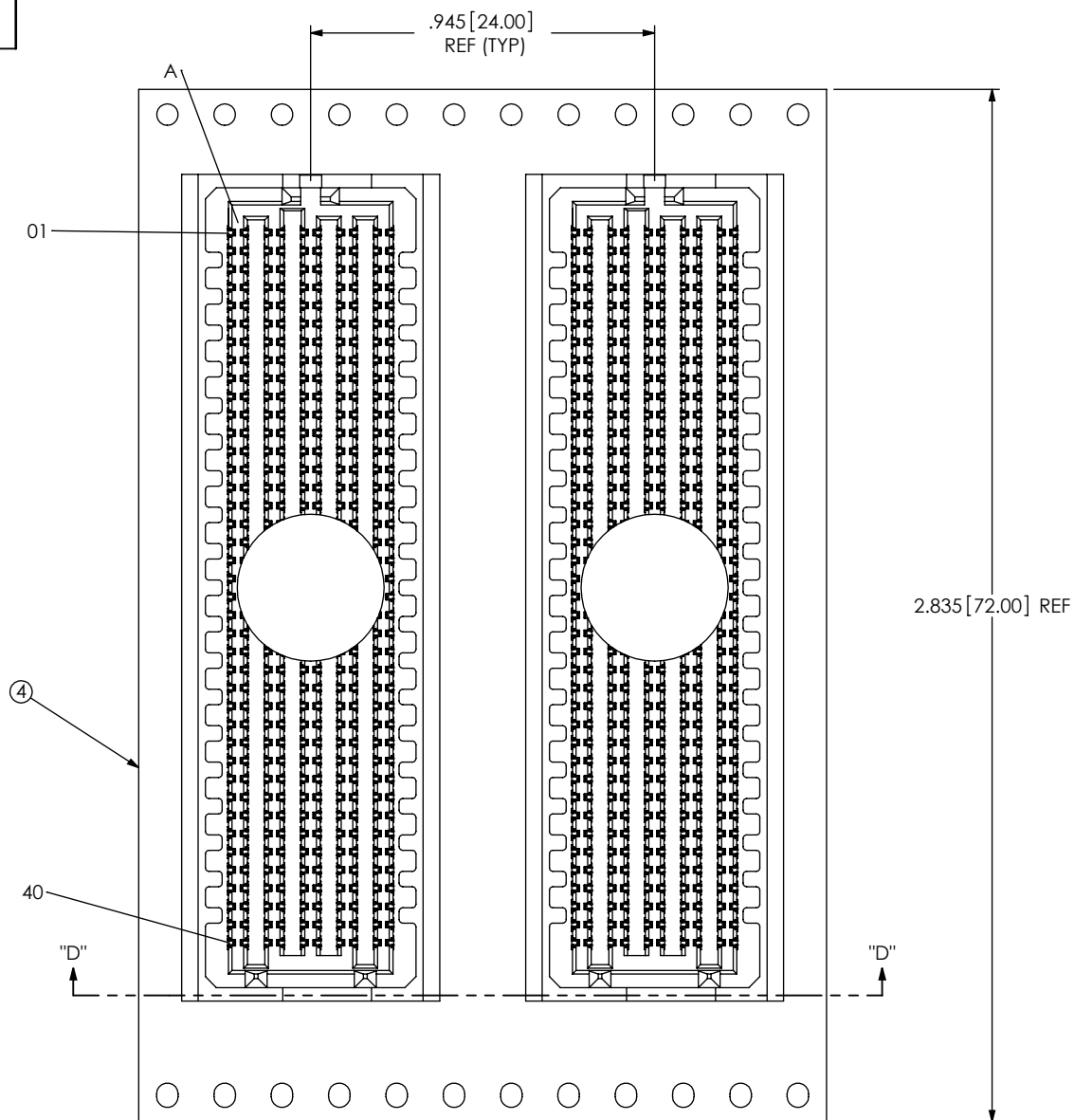
samtec

520 PARK EAST BLVD, NEW ALBANY, IN 47150
 PHONE: 812-944-6733 FAX: 812-948-5047
 e-Mail: info@SAMTEC.com code: 55322

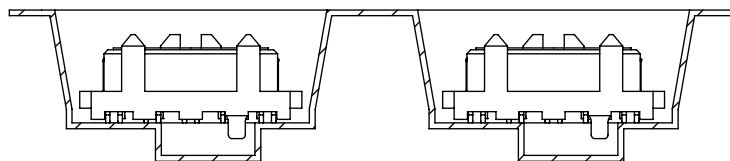
DESCRIPTION: .050 PITCH TERMINAL ARRAY ASM.

DWG. NO. ASP-134602-01

BY: G. PURVIS 10/31/2007 SHEET 3 OF 4



USER DIRECTION OF UN-REELING →
POCKET NOT DETAILED



SECTION "D"-"D"
PACKAGING VIEW

PROPRIETARY NOTE
THIS DOCUMENT CONTAINS INFORMATION
CONFIDENTIAL AND PROPRIETARY TO
SAMTEC, INC. AND SHALL NOT BE REPRODUCED
OR TRANSFERRED TO OTHER DOCUMENTS OR
DISCLOSED TO OTHERS OR USED FOR ANY
PURPOSE OTHER THAN THAT WHICH IT WAS
OBTAINED WITHOUT THE EXPRESSED WRITTEN
CONSENT OF SAMTEC, INC.

DO NOT SCALE DRAWING

SHEET SCALE: 2:1



520 PARK EAST BLVD, NEW ALBANY, IN 47150
PHONE: 812-944-6733 FAX: 812-948-5047
e-Mail: info@SAMTEC.com code: 55322

DESCRIPTION: .050 PITCH TERMINAL ARRAY ASM.

DWG. NO. ASP-134602-01

BY: G. PURVIS 10/31/2007 SHEET 4 OF 4