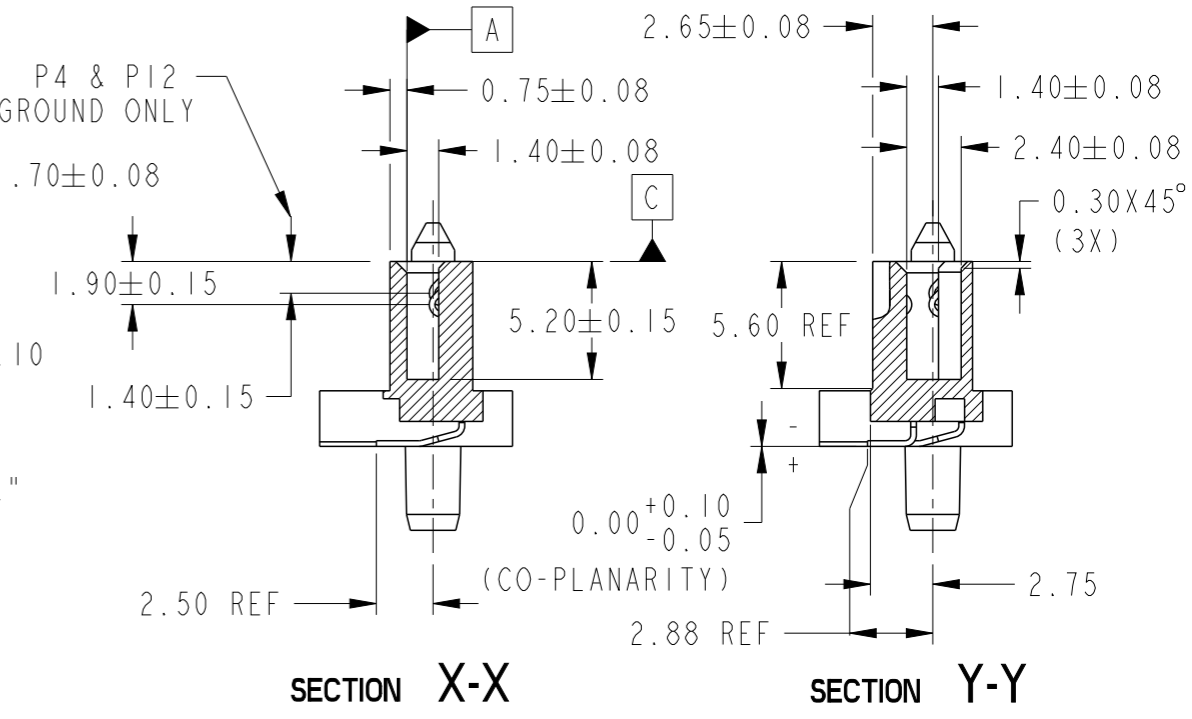
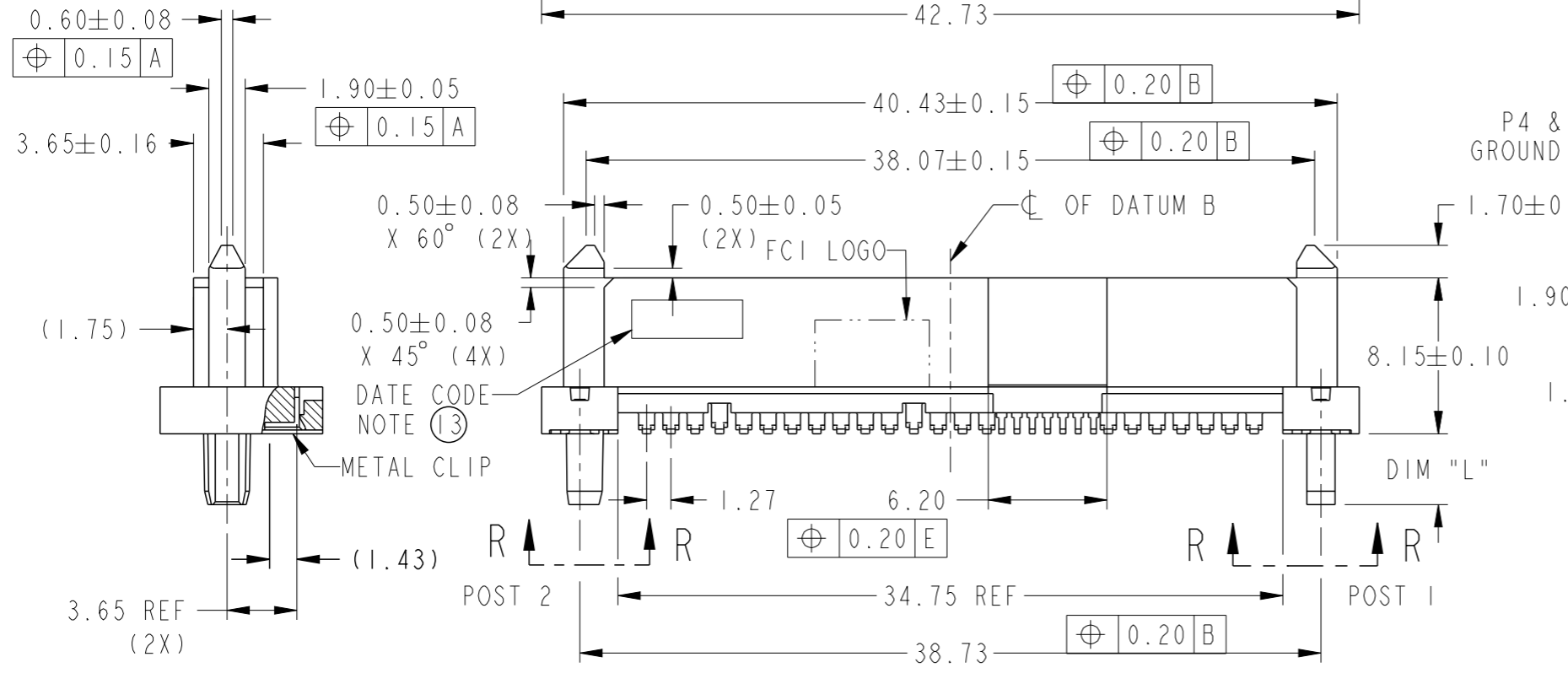
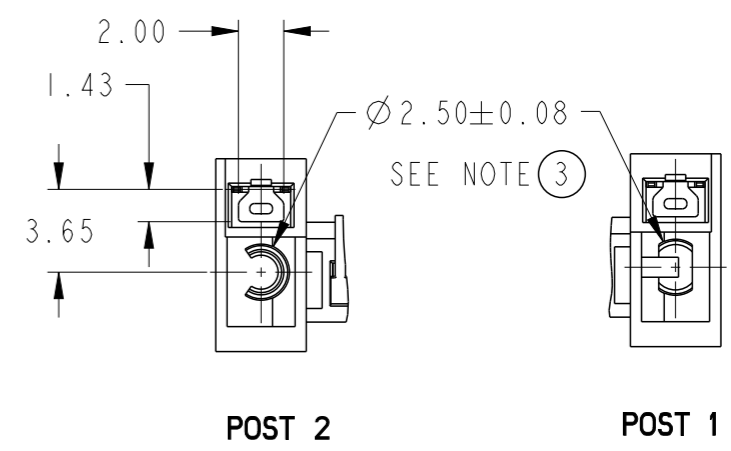
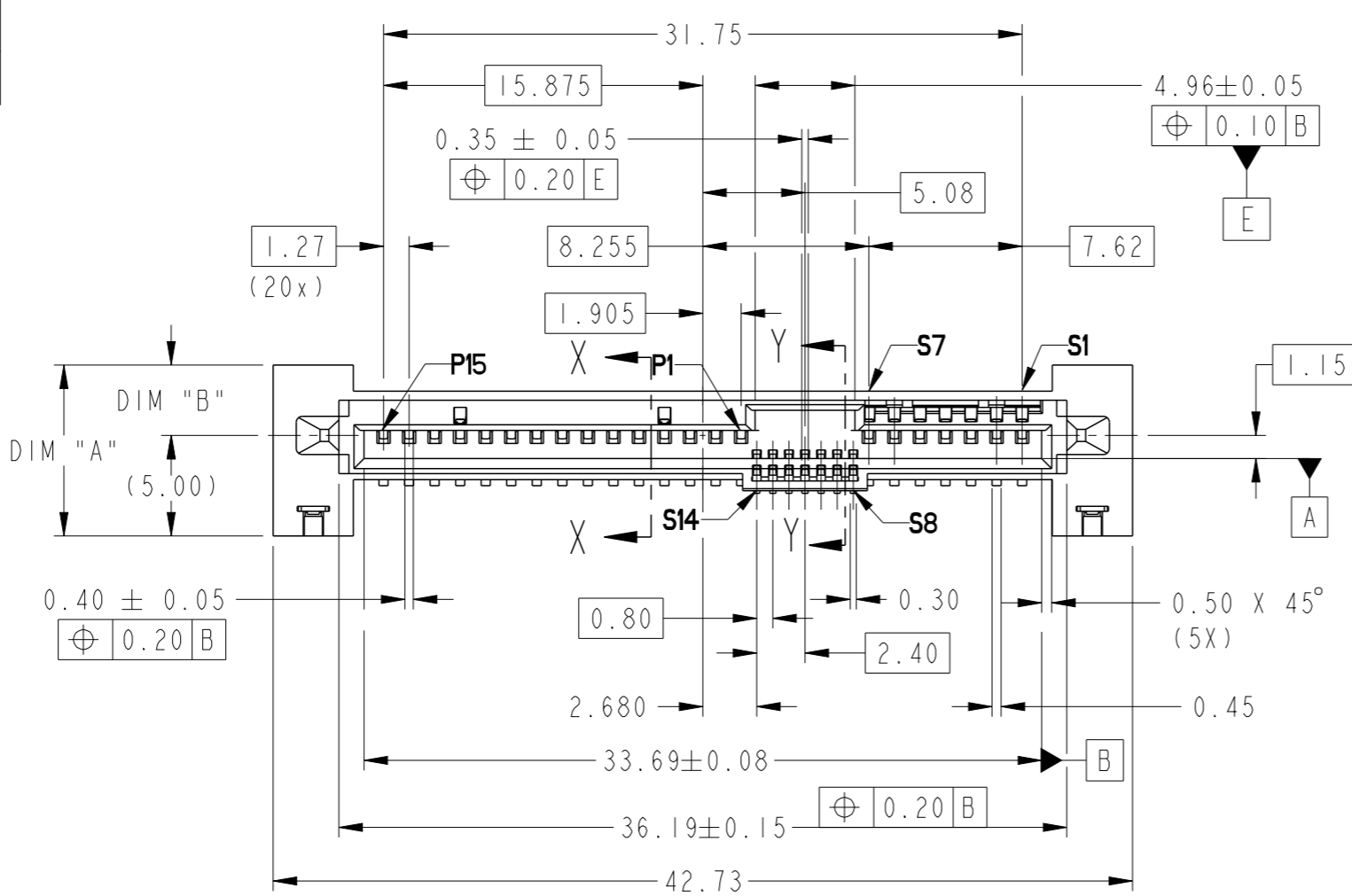


PRODUCT NUMBER
SEE TABLE

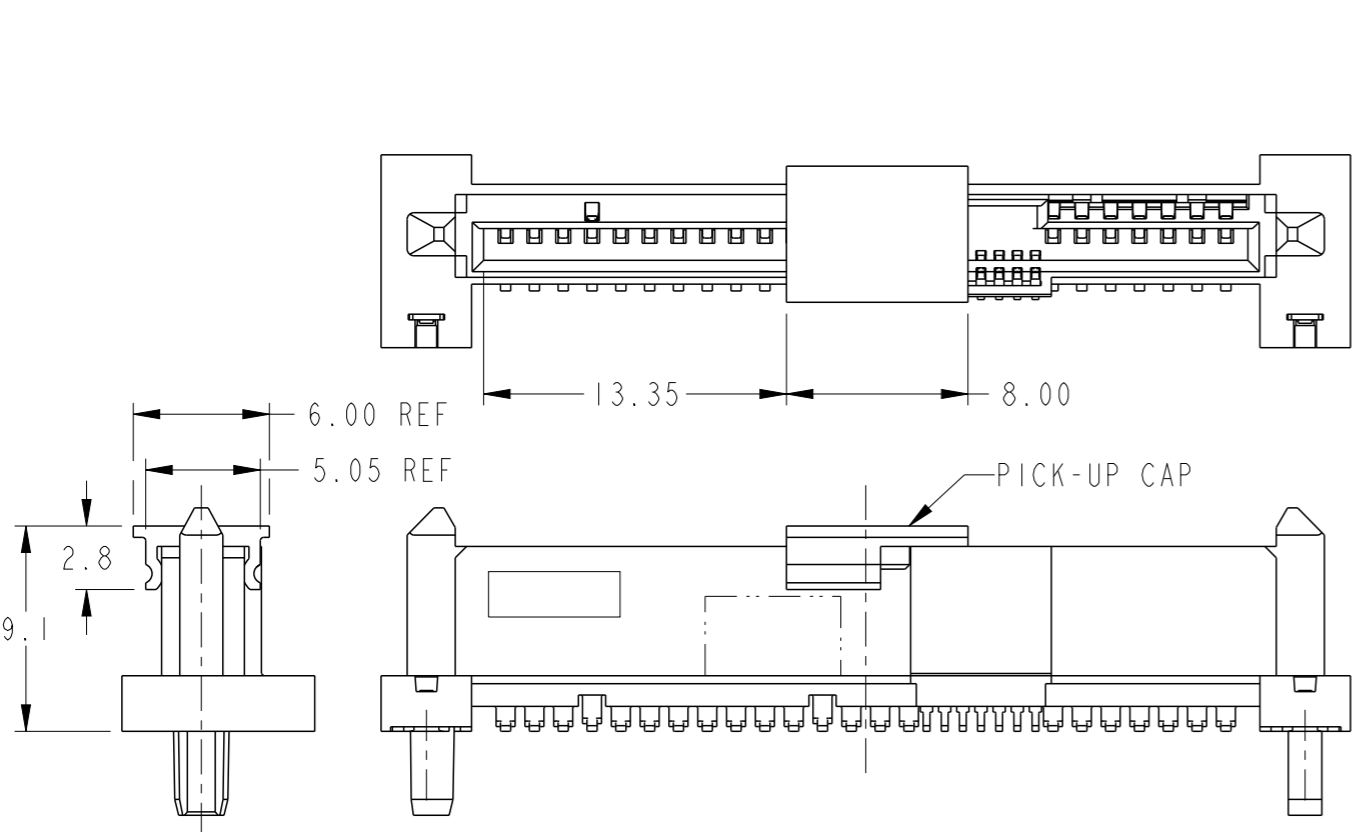


Copyright FCI.

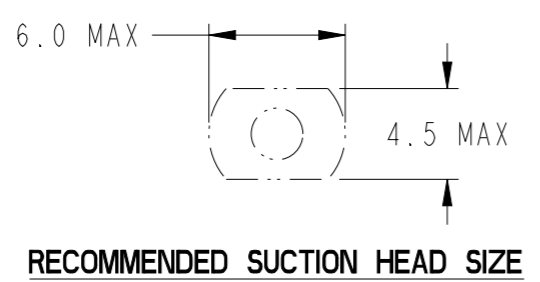
spec ref	-	dr	Vajith P-N	2014/12/18
tolerance std	ISO 406 ISO 1101	eng	Guat-Lian Loo	2015/03/23
	TOLERANCES UNLESS OTHERWISE SPECIFIED	chr	-	-
surface	linear	appr	Chen-Hong Tan	2015/03/23
	angular			
	0.X	±	-	
	0.XX	±	.20	
	0.XXX	±	-	
	ISO 1302	angular	0°	±2°

projection	MM	size	A3	scale	3:1
product family	SAS	rel level	Released	ecn no	-
SAS RECEPTACLE		dwg no	10125549	rev	A
WIDE BASE SMT TYPE ASSY		cat. no.	-	Product - Customer Drw	sheet 1 of 3

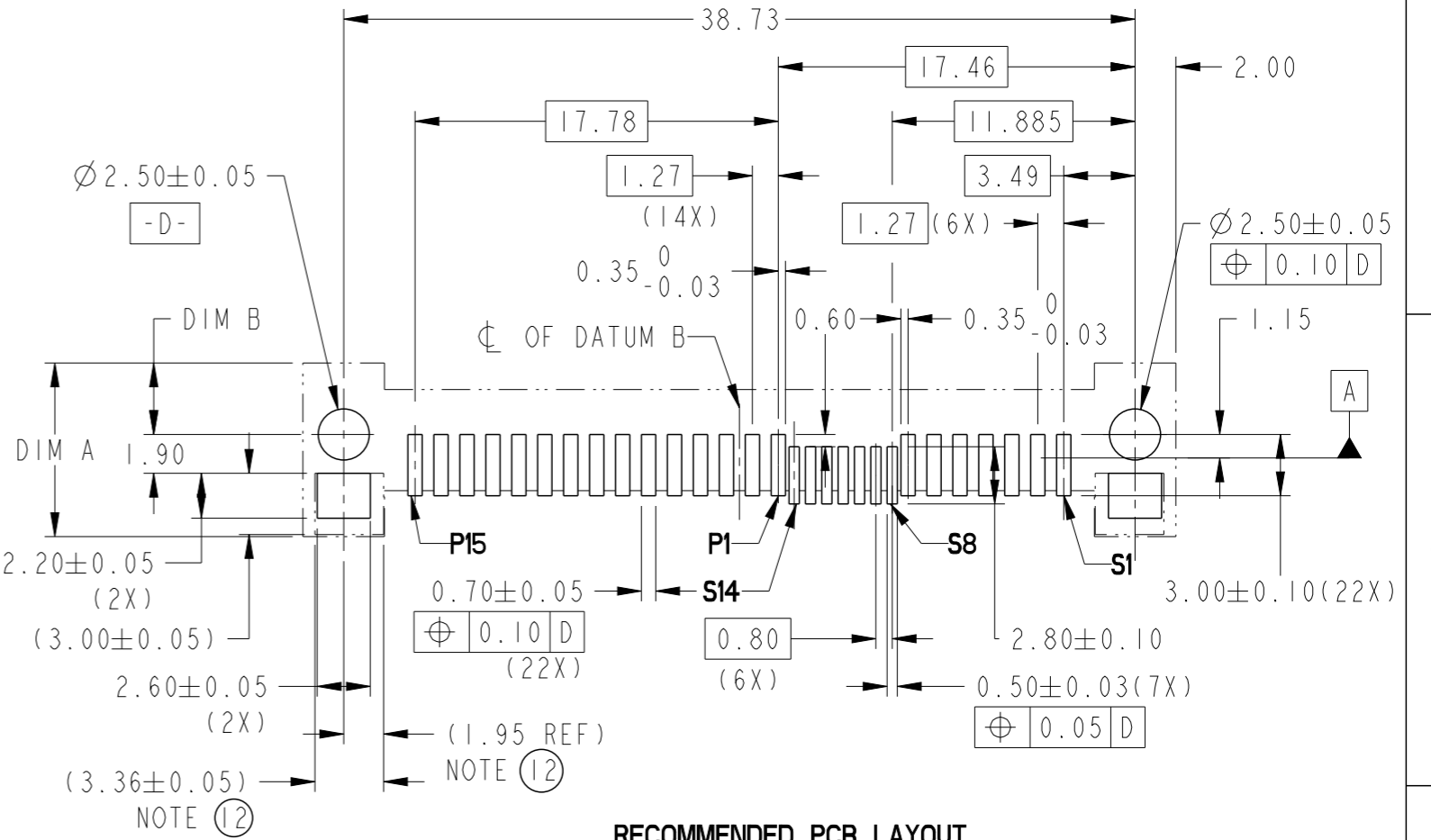
PRODUCT NO	DIM A	DIM B	DIM L	RECOMMENDED P.C. BOARD THICKNESS	PICK-UP CAP	PACKAGING	REMARK
10125549-001LF	8.50	3.50	3.7	4.57mm (0.018")	NO	TRAY	--
YES							
10125549-001CLF							
10125549-001C-TRLF	8.50	3.50	2.0	2.54mm (0.100")	YES	TAPE & REEL	--
10125549-002LF					NO	TRAY	
10125549-002CLF					YES		
10125549-002C-TRLF	7.50	2.50	0.6	1.57mm (0.062")	YES	TAPE & REEL	--
10125549-003LF					NO	TRAY	
10125549-003CLF					YES		
10125549-003C-TRLF					YES	TAPE & REEL	



PART WITH PICK-UP CAP, SEE NOTE 5



RECOMMENDED SUCTION HEAD SIZE



RECOMMENDED PCB LAYOUT
SCALE 3:1


Copyright FCI.



spec ref	-	dr	Vajith P-N	2014/12/18	projection	MM	size	A3	scale	3:1
tolerance std	ISO 406 ISO 1101	eng	Guat-Lian Loo	2015/03/23			ecn no	-	rel level	Released
surface	✓	chr	-	2015/03/23			product family	SAS		
linear	0.X ± 0.XX ±.20 0.XXX ±	appr	Chen-Hong Tan	2015/03/23	SAS RECEPTACLE		cat. no.	-	Product - Customer Drw	sheet 2 of 3
angular	0° ±2°	www.fci.com		cat. no.	-	Product - Customer Drw	cat. no.	-	Product - Customer Drw	sheet 2 of 3
angular		www.fci.com		cat. no.	-	Product - Customer Drw	cat. no.	-	Product - Customer Drw	sheet 2 of 3

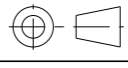

PRODUCT NUMBER
SEE TABLE

NOTES:

1. MATERIAL:
 - 1) HOUSING: HIGH TEMP TERMOPLASTIC, UL 94V-0
COLOR : BLACK
 - 2) TERMINAL: COPPER ALLOY
 - 3) HOLD DOWN: COPPER ALLOY
2. FINISH:
 - 1) TERMINAL: 30μ" Au PLATING (CONTACT POINT)
OVER 50μ" NICKEL
 - 2) SOLDER TAIL: 50μ" MIN Sn OVER 50μ" MIN NICKEL
 - 3) HOLD DOWN: 50μ" MIN Sn OVER 50μ" MIN NICKEL
- ③ THE DIM. IS MEASURED AT P.C. BOARD SITTING PLANE
- ④ PER SEF REV 1.3 EXCEPT 0.8mm PITCH BUMP AREA
5. PART WITH PICK-UP CAP, P/N XXXXXXXX-XXXC_LF
6. THE STD PACKAGING IS IN TRAY
7. THE TAPE & REEL PACKAGING, SUFFIX "-TR" ADDED AFTER
PRODUCT NUMBER (E.G. XXXXXXXX-XXXC-TRLF)
8. THE HOUSING WILL WITHSTAND EXPOSURE TO 260°C PEAK TEMPERATURE
FOR 10 SECONDS IN A CONVECTION, INFRA-RED OR VAPOR PHASE REFLOW
OVEN.
- ⑨ THIS PRODUCT MEETS EUROPEAN UNION DIRECTIVES AND OTHER COUNTRY
REGULATIONS AS DESCRIBED IN GS-47-0004.
- ⑩ PART NUMBERS ENDING IN "LF" MEANS FOR NOTE 8 LEAD FREE IDENTIFICATION
11. A  SYMBOL WILL BE NEXT TO ANY DIMENSION, VIEW, OR NOTE WHICH HAS
BEEN MODIFIED WITH THE CURRENT DRAWING REVISION.
- ⑫ THE GROUND PAD SIZES SHOWN IN () IS THE COMPETITOR DESIGN FOR REF.
- ⑬ DATE CODE LOCATION. DATE CODE NO.YYWW (E.G.14225).
14. CORING AT NON FUNCTIONAL AREAS ARE SUBJECT TO CHANGE WITHOUT NOTICES.



Copyright FCI.

spec ref -		dr	Vajith P-N	2014/12/18	projection	MM	size	A3	scale	3:1	
tolerance std		eng	Guat-Lian Loo	2015/03/23		← →	ecn no		-		
ISO 406 ISO 1101		chr	-	-			rel level		Released		
surface 		appr	Chen-Hong Tan	2015/03/23	product family		SAS	rev		A	
ISO 1302		linear		0.X	± -	www.fci.com		SAS RECEPTACLE		dwg no	10125549
		angular		0°	± 2°	cat. no.		-		Product - Customer Drw	
										sheet 3 of 3	