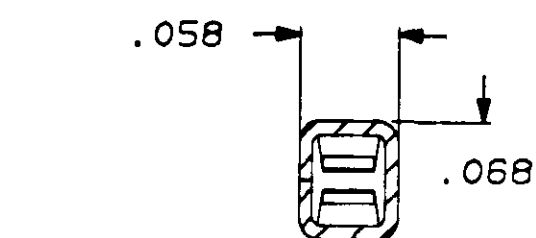
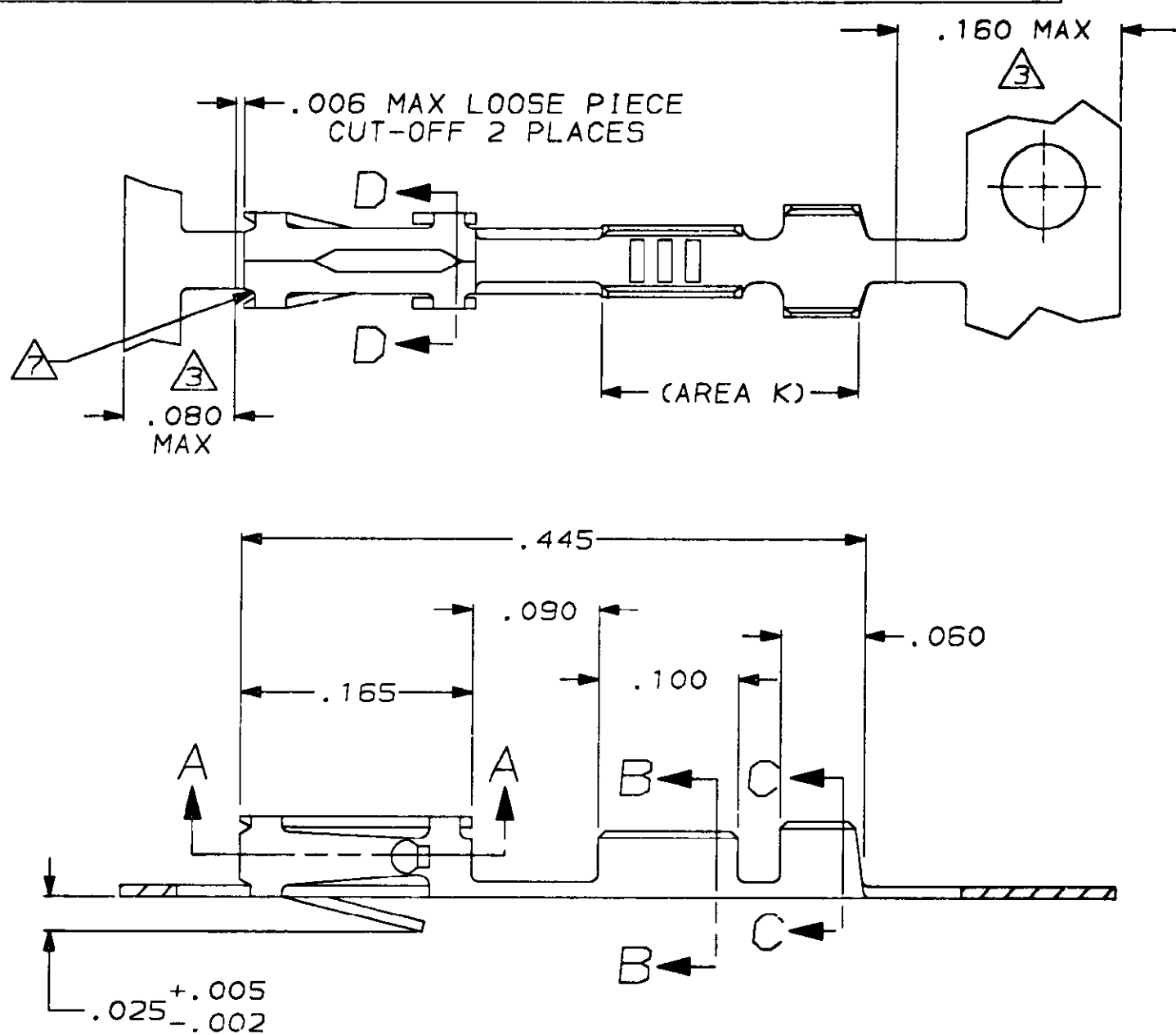


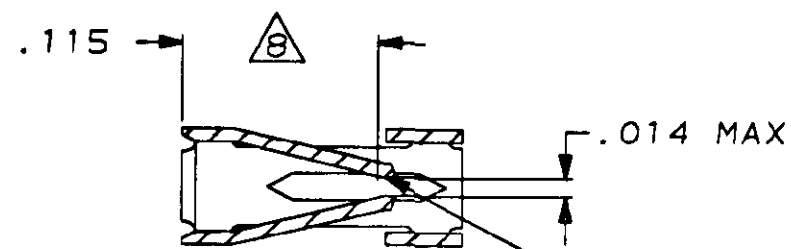
DRAWING MADE IN THIRD ANGLE PROJECTION

THIS DRAWING IS UNPUBLISHED. RELEASED FOR PUBLICATION .19
 © COPYRIGHT 19 BY AMP INCORPORATED, HARRISBURG, PA. ALL INTERNATIONAL RIGHTS RESERVED. AMP PRODUCTS MAY BE COVERED BY U.S. AND FOREIGN PATENTS AND/OR PATENTS PENDING.

MOD	LOC	DIST	P	F	ZONE	LTR	DESCRIPTION	DATE	APPROVED
30	AD	39					REV PER ECN AR-2356	5/3/89	KIM
							REV LOC & DIST AD-4171	3-90	BF
							REV PER AD-5350	2-20-91	-
							REV PER AD-5463	3-19-91	-
							OBS -8 PER 0010-1863-93	1-14-93	PS



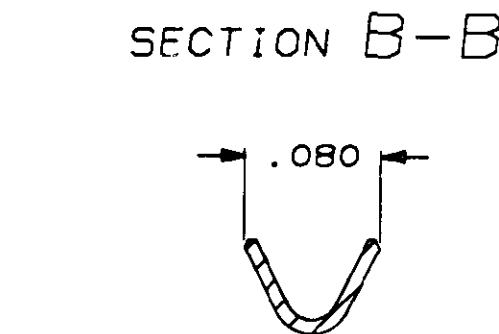
SECTION D-D



SECTION A-A



SECTION B-B



SECTION C-C

INSULATION RANGE - .020-.040 DIA

- ① .000030 GOLD ON CONTACT AREA, GOLD FLASH ON REMAINDER OVER .000050 NICKEL
- 2. REELED FOR MINI APPLICATOR
- ③ GOLD PLATING IS NOT REQUIRED IN THIS AREA
- ④ HAND TOOL USED FOR CRIMPING L.P. CONTACT IS #90358-1
- ⑤ .000015 GOLD ON CONTACT AREA, GOLD FLASH ON REMAINDER OVER .000050 NICKEL
- ⑥ .000030 GOLD ON THE CONTACT AREA, .000100-.000200 93/7 BRIGHT TIN-LEAD IN AREA K, ALL OVER .000050 NICKEL
- ⑦ CUT-OUTS ON THE BOX ARE AT MANUFACTURERS OPTION
- ⑧ POINT OF MEASUREMENT FOR PLATING THICKNESS (INSIDE BEAMS)
- ⑨ OBSOLETE PART NUMBER

LOOSE PIECE	④	⑥	⑨	102918-6
LOOSE PIECE	④	⑤	⑨	102918-5
LOOSE PIECE	④	⑤	⑨	102918-4
LOOSE PIECE	④	⑤	⑨	102918-3
		①		102918-2
		①		102918-1
REMARKS	FINISH	PART NUMBER		

UNLESS OTHERWISE SPECIFIED DIMENSIONS ARE IN INCHES TOLERANCES ON: 2 PL DEC ± 3 PL DEC ± .005 ANGLES ±	DR 5/3/89 KATE HELM	AMP INCORPORATED Harrisburg, Pa. 17105		
	CHK 6-2-89 C. OBERMAN			
	MATERIAL: BERYLLIUM COPPER, .008 THICK	APPD 6-2-89 J. GESFORD	NAME CONTACT, MOD IV 1/2, RECEPTACLE, CRIMP SNAP-IN	
	FINISH: SEE TABLE	APPD 6-6-89 FLINCHBAUGH	SIZE C	FSCM NO 00779
	PRODUCT SPEC 108-25021	SCALE 10:1	SHEET 1 OF 1	
	APPLICATION SPEC 114-25003			
	WEIGHT -			

AMP 1471-7 REV 10-84

14-JAN-94 11:33:16 amp18171 /home/so026o/dept1729/amp18171/u.mod1Y

CUSTOMER DRAWING