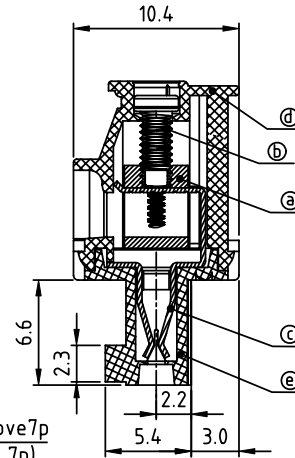
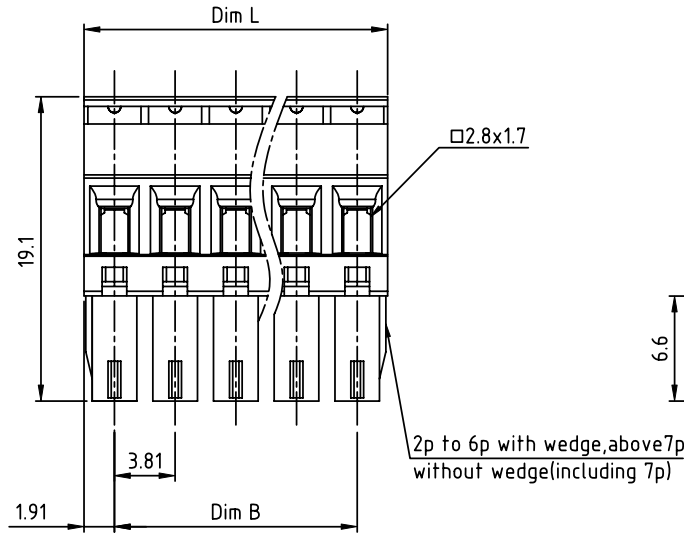
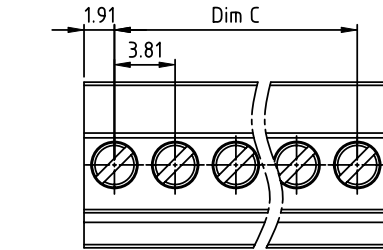


PRODUCT NUMBER	PITCH
TSxx31xA00J0G	3.81 mm



Material:

- ItemⒶ Clamp: Brass(CuZn),Nickel plated
- ItemⒷ Terminal screw: Steel Zinc plating "-" slot type
- ItemⒸ Female contact: PhBz, Tin plated
- ItemⒹ Top body: Thermoplastic (UL94V-0)
- ItemⒺ Bottom body: Thermoplastic (UL94V-0)

Electrical cULus/VDE

- Voltage rating: 300VAC/300VAC
- Current rating: 8A/10A
- Wire range: 1.5mm²
- Solid wire(AWG): 16-28
- Stranded wire(AWG): 16-28
- Torque: 1.7Lb-In./0.2Nm
- Screw: M2
- Wire strip length: 6-7mm
- Withstanding Voltage: 1.6KV/2.5KV
- Operating temperature: -40°C to +115°C
- Safety approval:

DIMENSION
N = Number of poles

Dim L	NX3.81
Dim B	(N-1)X3.81
Dim C	(N-1)X3.81
Poles	Tolerance
2p-6p	±0.15
7p-12p	±0.20
13p-16p	±0.25
17p-24p	±0.30

PART NO.: TS xx 31 x A 00J0 G

Solid block	0	Black (RAL9005)	RoHS compliant (lead<4%) In copper Alloy
No. of poles	2	Red (RAL3001/D)	
02 2 poles	3	Orange(RAL2011/P)	
03 3 poles	4	Yellow(RAL1018/A)	
...	5	Green(RAL6018/T)	
24 24 poles	6	Blue (RAL5015/A)	
	8	Grey(RAL7035/D)	
	9	White(RAL1102)	
	C	Green(RAL6018/U)	

mat'l. code		surface ASME Y14.5	tolerance ASME Y14.5	projection 	product family TERMINAL BLOCK
ltr	ecn no	dr	date		title TERMINAL BLOCK
				tolerances unless otherwise specified	PLUGGABLE PLUG,HOOK ON ENTRY SIDE,WITHOUT FLANGE
				angles 	scale MM
				X±0.5	dwg no TSxx31xA00J0G
				X.X±0.3	sheet 1 of 1 size A4
				X'±1"	X.XX±0.1
				dr EVIN ZHONG 041914	
				enrg EVIN ZHONG 041914	
				chr HANKE FENG 041914	
				appd SHI JUN 041914	
sheet index	revision	A		type CUSTOMER Drawing	
	sheet	1			