

**DIGITUS CAT 6, Class E Patch Panel**

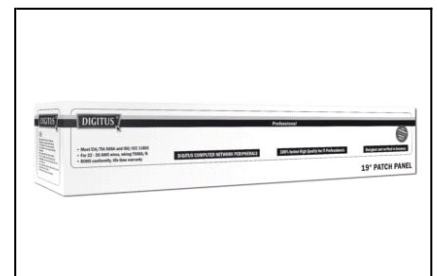
DN-91616U 4016032241546



**DIGITUS CAT 6, Class E Patch Panel, unshielded**  
**16-port RJ45, 8P8C, LSA, 1U, Rack Mount Color black RAL 9005**

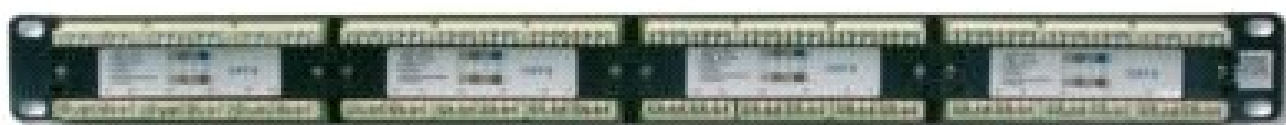
**Best performance and link quality for your network**

- 1 Manufactured acc. Link Performance Class E, for up to 250MHz, EN 50173 and ISO/IEC 11801
- 1 Shielded RJ45 jacks
- 1 Cable installation via LSA strips, color codes based on EIA/TIA 568 A & B
- 1 Fixing option for cable ties, central ground connection
- 1 Suitable for 483mm (19") Rack Mount
- 1 Material housing: SECC, 1,5mm Electrogalvanized, Cold-rolled Steel accc. EN1.4301, UNS S30400, AISI 304 and LMSAD110
- 1 Category: CAT 6
- 1 Ports: 16
- 1 Color: black, RAL 9005
- 1 Units: 1



**DIGITUS CAT 6, Class E Patch Panel**

DN-91616U 4016032241546



→ **Logistics**

	Number (pcs)	Weight (kg)	Depth (cm)	Width (cm)	Height (cm)	cm <sup>3</sup>
Packaging Unit Carton	10	7,31	58,00	54,00	19,00	59508,00
Packaging Unit Inside	1	0,73	8,00	56,00	10,50	4704,00
Packaging Unit Single	1	0,73	8,00	56,00	10,50	4704,00
Net single without Packaging	1	0,00	2,50	48,50	4,50	545,63

→ **Packaging type**



Country of origin: China

