

# LTC4368

## 100V UV/OV and Reverse Protection Controller with Bidirectional Circuit Breaker

### DESCRIPTION

Demonstration circuit 2418A is intended to demonstrate the performance of the LTC<sup>®</sup>4368 100V undervoltage (UV), overvoltage (OV), and reverse protection controller with bidirectional circuit breaker.

The LTC4368 protects circuits from overcurrent in both directions and from input voltages that may be too high, too low, or negative. The LTC4368 controls the gate voltage of two back-to-back connected external MOSFETs to ensure that the load is connected to the input supply only when there are no voltage or current faults. The OV and UV protection levels are adjusted by resistive dividers at the OV and UV pins, respectively. Asserting a low signal at the  $\overline{\text{SHDN}}$  pin disables the MOSFETs and places the controller in a low-current shutdown state. The  $\overline{\text{FAULT}}$  pin is asserted when the controller is in shutdown mode or when the input voltage is outside of the UV or OV window,

or the load current exceeds the protection level, or the input voltage is below undervoltage lockout (1.8V to 2.4V).

After a forward overcurrent fault, the LTC4368 will either latch off power or retry after a user adjustable delay. A reverse overcurrent fault waits for the output to fall 100mV below the input to reconnect power to the load.

The LTC4368 can withstand DC voltages between  $-40\text{V}$  and  $100\text{V}$  and has an operating range of  $2.5\text{V}$  to  $60\text{V}$ .

The DC2418A includes the LTC4368 controller, two back-to-back connected power MOSFETs, current sense resistor, three jumpers, and three LEDs to indicate the input and output voltages and the  $\overline{\text{FAULT}}$  pin signal.

**Design files for this circuit board are available at <http://www.linear.com/demo/DC2418A>**

LT, LT, LTC, LTM, Linear Technology and the Linear logo are registered trademarks of Linear Technology Corporation. All other trademarks are the property of their respective owners.

### PERFORMANCE SUMMARY

Specifications are at the full operating temperature range

SYMBOL	PARAMETER	CONDITIONS	MIN	TYP	MAX	UNITS
$V_{\text{IN}}$	Input Voltage Range for LTC4368	Operating Range Protection Range	2.5 -40		60 100	V V
$V_{\text{IN(UVLO)}}$	Input Supply Undervoltage Lockout	$V_{\text{IN}}$ Rising	1.8	2.2	2.4	V
$I_{\text{VIN}}$	Input Supply Current: Off On	$\overline{\text{SHDN}} = 0\text{V}$ , $\text{SENSE} = V_{\text{OUT}}$ $\overline{\text{SHDN}} = 2.5\text{V}$ , $\text{SENSE} = V_{\text{OUT}} = V_{\text{IN}}$		5 30	25 100	$\mu\text{A}$ $\mu\text{A}$
$I_{\text{VIN(R)}}$	Reverse Input Supply Current	$V_{\text{IN}} = -40\text{V}$ , $\text{SENSE} = V_{\text{OUT}} = 0\text{V}$		-1.5	-2.5	mA
$\Delta V_{\text{SENSE,F}}$	Overcurrent Fault Threshold, Forward ( $\text{SENSE} - V_{\text{OUT}}$ )	$V_{\text{OUT}} = V_{\text{IN}}$ $V_{\text{IN}} = 12\text{V}$ , $V_{\text{OUT}} = 0.5\text{V}$ $V_{\text{IN}} = 12\text{V}$ , $V_{\text{OUT}} = 0\text{V}$	40 40 30	50 50 50	60 60 70	mV mV mV
$\Delta V_{\text{SENSE,R}}$	Overcurrent Fault Threshold, Reverse ( $\text{SENSE} - V_{\text{OUT}}$ )	LTC4368-1 $V_{\text{OUT}} = V_{\text{IN}}$ LTC4368-2 $V_{\text{OUT}} = V_{\text{IN}}$	-42 -1	-50 -3	-58 -5	mV mV
$\Delta V_{\text{RR}}$	Reverse Overcurrent Re-Enable Turn-On Threshold ( $V_{\text{IN}} - V_{\text{OUT}}$ )	$V_{\text{IN}} = \text{SENSE} = 6\text{V}$ to $60\text{V}$ $V_{\text{IN}} = \text{SENSE} = 2.5\text{V}$ to $<6$	75 20	100 50	125 125	mV mV
$\Delta V_{\text{GATE}}$	Gate Drive ( $V_{\text{GATE}} - V_{\text{OUT}}$ )	$V_{\text{IN}} = 2.5\text{V}$ , $I_{\text{GATE}} = 0\mu\text{A}$ , $-1\mu\text{A}$ $V_{\text{IN}} = 5.0\text{V}$ , $I_{\text{GATE}} = 0\mu\text{A}$ , $-1\mu\text{A}$ $V_{\text{IN}} = 12\text{V}$ to $60\text{V}$ , $I_{\text{GATE}} = -1\mu\text{A}$	3 7.2 10	4 8.7 11	5.5 10.8 13.1	V V V
$I_{\text{GATE(UP)}}$	Gate Pull-Up Current	$\text{GATE} = 15\text{V}$ , $V_{\text{IN}} = 12\text{V}$	-20	-35	-60	$\mu\text{A}$
$I_{\text{GATE(SLOW)}}$	Gate Slow Pull-Down Current	$\text{GATE} = 20\text{V}$ , $V_{\text{IN}} = 12\text{V}$	50	90	160	$\mu\text{A}$
$I_{\text{GATE(FAST)}}$	Gate Fast Pull-Down Current	$\text{GATE} = 20\text{V}$ , $\text{SENSE} = V_{\text{IN}} = 12\text{V}$	30	60	90	mA

# DEMO MANUAL DC2418A

## PERFORMANCE SUMMARY Specifications are at $T_A = 25^\circ\text{C}$

SYMBOL	PARAMETER	CONDITIONS	MIN	TYP	MAX	UNITS
$V_{UV}$	UV Input Threshold Voltage	UV Falling	492.5	500	507.5	mV
$V_{OV}$	OV Input Threshold Voltage	OV Rising	429.5	500	507.5	mV
$t_{D(\text{FAST})}$	Gate Fast Turn-Off Delay	$C_{\text{GATE}} = 2.2\text{nF}$ , UV, OV FAULT		2	6	$\mu\text{s}$
$t_{\text{FAULT}}$	OV, UV Fault Propagation Delay	Overdrive = 50mV, $V_{\text{IN}} = 12\text{V}$		1	2	$\mu\text{s}$
$V_{\text{SHDN}}$	SHDN Input Threshold	SHDN Falling	0.4	0.75	1.2	V
$V_{\text{UV\_BOARD}}$	Board Overvoltage Threshold	DC2418A-A and DC2418A-B	17.37	17.98	18.61	V
$V_{\text{OV\_BOARD}}$	Board Undervoltage Threshold	DC2418A-A and DC2418A-B	3.4	3.51	3.63	V
$I_{\text{LIM\_FORW}}$	Board Forward Current Trip Threshold	DC2418A-A DC2418A-B	8.32 2.08	10 2.5	11.72 2.92	A A
$I_{\text{LIM\_REVERS}}$	Board Reverse Current Trip Threshold	DC2418A-A DC2418A-B	8.32 0.05	10 0.15	12.12 0.253	A A

## OPERATING PRINCIPLES

The LTC4368 monitors the input voltage and current sense resistor voltage. The controller disconnects a load from the power rail when the input voltage is too low, too high or negative, or when the voltage across the sense resistor exceeds 50mV or is less than -3mV for the LTC4368-2 or is less than -50mV for the LTC4368-1. The LTC4368 provides accurate overvoltage and undervoltage comparators to ensure that power is applied to the system only if the input supply is within the allowable voltage window. Reverse supply protection circuits automatically isolate the load from negative input voltages.

During normal operation, a high voltage charge pump enhances the gates of back-to-back external N-channel power MOSFETs.

The LTC4368 consumes 5 $\mu\text{A}$  during shutdown state and 80 $\mu\text{A}$  while operating.

The demo board includes the LTC4368 protection controller, two back-to-back connected N-channel MOSFETs, the resistive divider for UV and OV threshold adjustment, sense resistor for overcurrent protection, a few LEDs, and jumpers for visual information and to control signal assignment. There is an option for retry operation with two selectable cool-down time periods or for latch-off after a forward overcurrent fault.

The DC2418A is available in two versions, DC2418A-A and DC2418A-B, as shown on the board schematic.

The DC2418A-A is populated with:

- LTC4368-1 having a reverse overcurrent circuit breaker threshold of -50mV
- SiR870ADP MOSFETs and 5m $\Omega$  sense resistor for 10A maximum load

And the DC2418A-B has:

- LTC4368-2 having a reverse overcurrent circuit breaker threshold of -3mV
- SiR7942DP dual MOSFET and 20m $\Omega$  sense resistor for 2.5A maximum load

### Turrets

$V_{\text{IN}}$  (E1, E10): Power rail input.

GND (E2, E9, E7, E12): Power and control ground.

$V_{\text{OUT}}$  (E6, E13): Circuit output for load connection.

UV (E3): UV pin.

OV (E4): OV pin.

$\overline{\text{SHDN}}$  (E5):  $\overline{\text{SHDN}}$  pin.

$\overline{\text{FAULT}}$  (E8):  $\overline{\text{FAULT}}$  pin.

## Jumpers

- JP1: ( $\overline{\text{SHDN}}$ ) Enable (EN) or Disable (DIS) Controller.  
 JP2: ( $V_{\text{IN}}$ ) Power or unpower LEDs, green D1 and red D3.  
 JP3: ( $V_{\text{OUT}}$ ) Power or unpower green LED D2.  
 JP4: (COOL-DOWN-TIME) Select cool-down time 1320ms, 120ms, or place controller in latch-off operation.

## LEDs

- D1: Indicates input voltage is present.  
 D2: Indicates output voltage is present.  
 D3: Indicates  $\overline{\text{FAULT}}$  pin signal (a fault turns on this LED).

## QUICK START PROCEDURE

DC2418A is easy to set up to evaluate the performance of LTC4368. Refer to Figure 1 and Figure 2 for proper measurement equipment setup and follow the procedure below.

### Reverse Voltage Protection Test

1. Set JP1 to EN.
2. Set JP2 and JP3 to CONNECT LED.
3. Connect a power supply across  $V_{\text{IN}}$  and GND in negative configuration (connect its positive terminal to GND and negative to  $V_{\text{IN}}$ ).
4. Connect a power supply across  $V_{\text{OUT}}$  and GND and set to 0V.
5. Connect the ammeters in series with  $V_{\text{IN}}$  and  $V_{\text{OUT}}$ .
6. Slowly ramp supply down to -40V (referenced to GND). Make sure this voltage does not exceed -40V.
7. Verify all LEDs are off, input current is  $<3\mu\text{A}$  and output current is  $<100\mu\text{A}$ .
8. Ramp supply back to 0V.

### Undervoltage/Overvoltage Protection Test

1. Reverse the polarity of power supply connection across  $V_{\text{IN}}$  to GND (connect supply's positive terminal to  $V_{\text{IN}}$  and negative to GND).
2. Slowly ramp supply up to 100V and verify that green  $V_{\text{IN}}$  LED and red  $\overline{\text{FAULT}}$  LED light up, but green  $V_{\text{OUT}}$  LED does not light up.
3. Ramp supply down from 60V to 0V and verify green  $V_{\text{IN}}$  LED, red  $\overline{\text{FAULT}}$  LED, green  $V_{\text{OUT}}$  LED, and  $V_{\text{OUT}}$  operate according to the following table.

$V_{\text{IN}}$	$V_{\text{OUT}}$	$V_{\text{IN}}$ LED	$V_{\text{OUT}}$ LED	$\overline{\text{FAULT}}$ LED
0V to 3.5V	0V	Off/Dim/On	Off	On
3.5V to 18V	$V_{\text{IN}}$	On	On	Off
18V to 60V	0V	On	Off	On

### Forward Overcurrent Protection Test

1. Place JP1 in position DIS and JP2 and JP3 in position CONNECT LED.
2. Connect +5V supply to  $V_{\text{IN}}$ .
3. Enable LTC4368 by changing the position JP1 to EN. Confirm that output voltage is +5V.
4. Load the DC2418A-A board output with  $0.4\Omega$  (25W) resistor or DC2518A-B board with  $1.5\Omega$ . Confirm that the output load is disconnected from power. The load should be placed between the  $V_{\text{OUT}}$  and GND turrets.
5. Repeat steps 3 and 4 with a 7.8A load for DC2418A-A and a 1.9A load for DC2418A-B. Confirm that the output is not disconnected ( $V_{\text{OUT}}$  should be close to  $V_{\text{IN}}$  and not at ground).

### Jumper Test

1. Remove the load and set the  $V_{\text{IN}}$  supply to 9V.
2. Move jumpers and verify LEDs light up according to table below.

JP1	JP2/JP3	$V_{\text{IN}}$ LED	$V_{\text{OUT}}$ LED
EN	CONNECT LED	On	On
DIS	CONNECT LED	On	Off
EN	OPEN	Off	Off

## QUICK START PROCEDURE

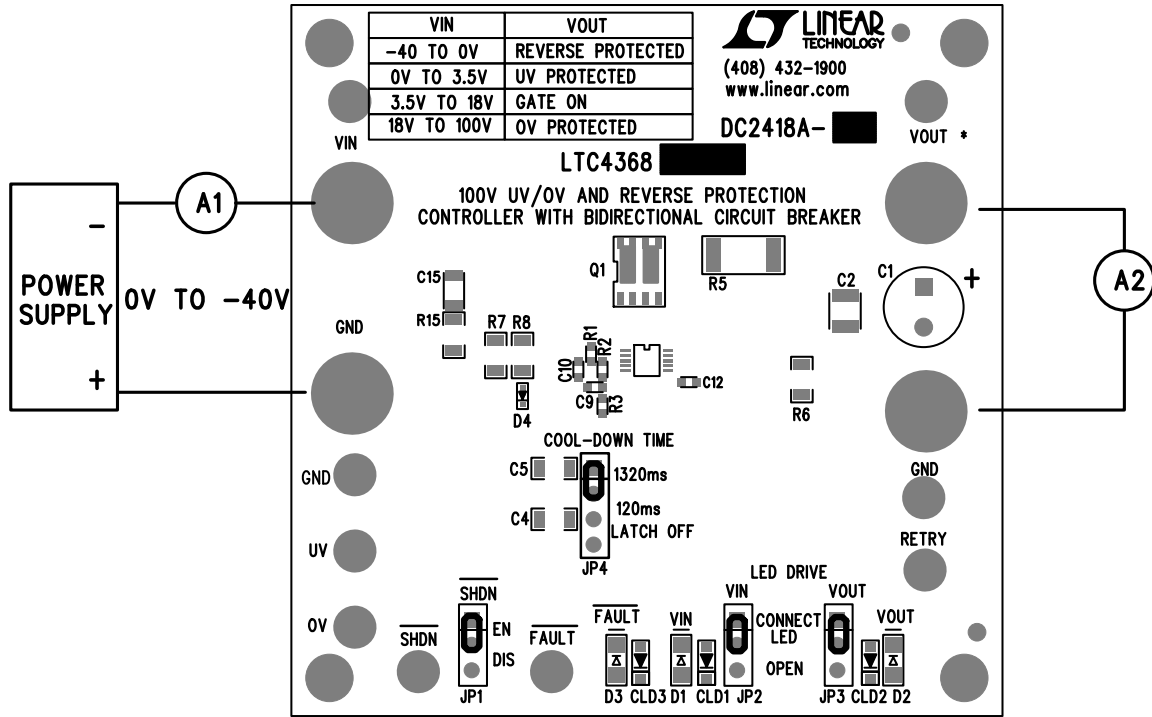


Figure 1. Reverse Voltage Protection Test

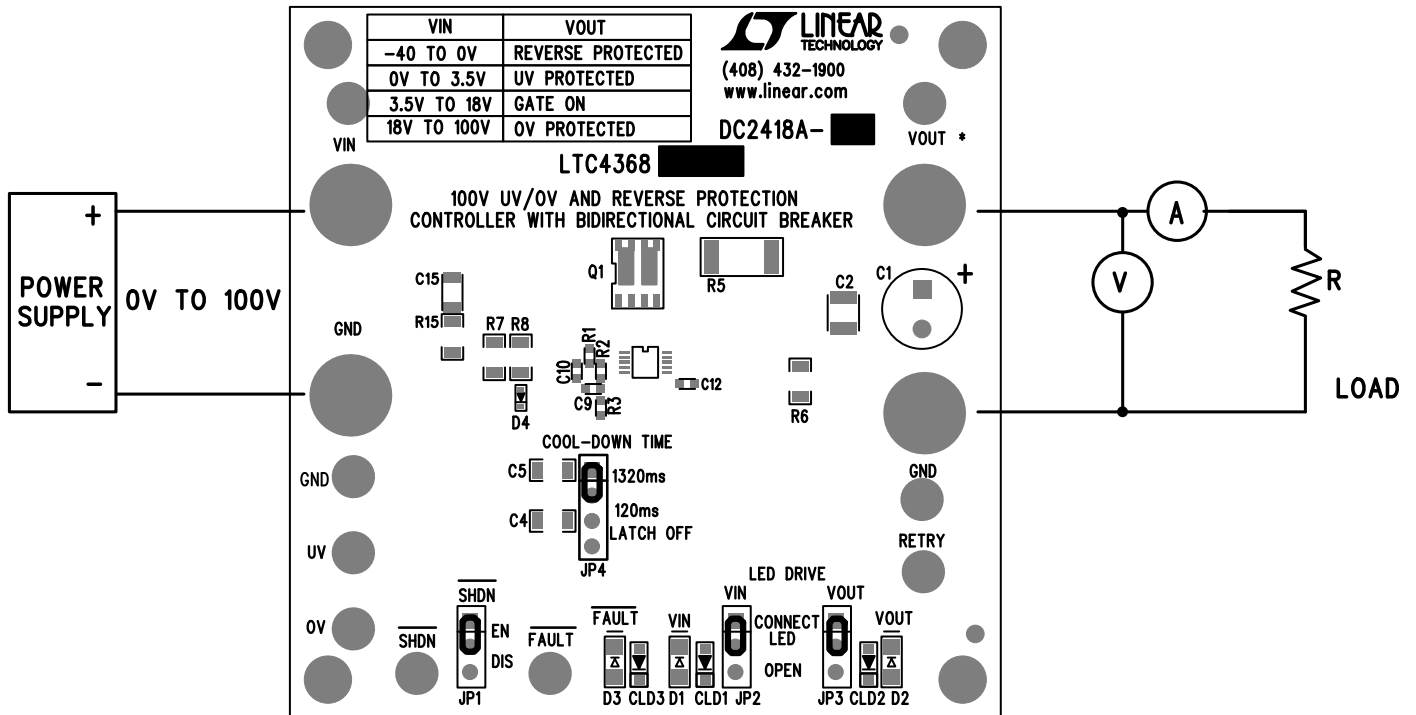
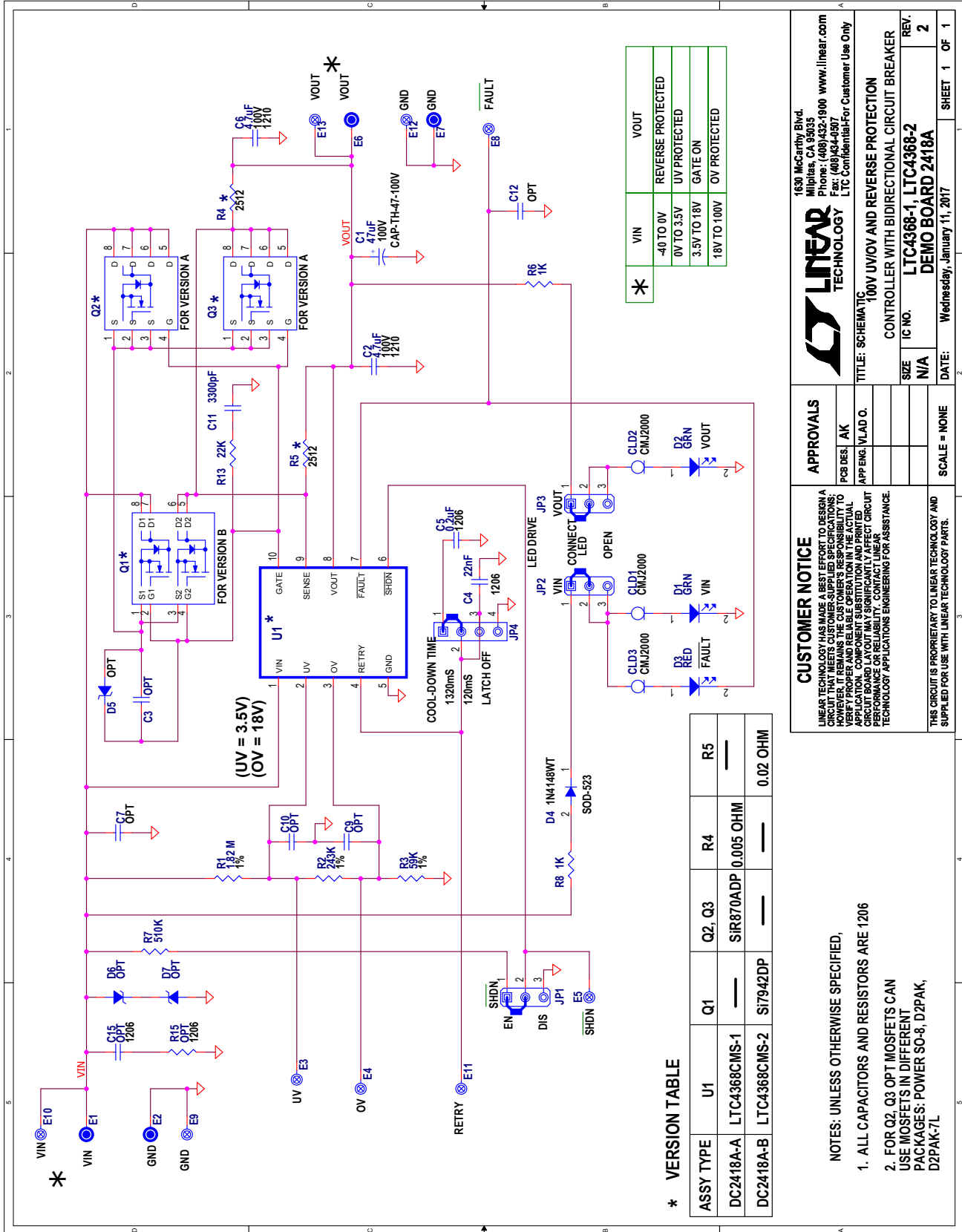


Figure 2. Undervoltage/Overvoltage Test and Forward Overcurrent Protection Test

**SCHEMATIC DIAGRAM**



Information furnished by Linear Technology Corporation is believed to be accurate and reliable. However, no responsibility is assumed for its use. Linear Technology Corporation makes no representation that the interconnection of its circuits as described herein will not infringe on existing patent rights.

# DEMO MANUAL DC2418A

---

## DEMONSTRATION BOARD IMPORTANT NOTICE

Linear Technology Corporation (LTC) provides the enclosed product(s) under the following **AS IS** conditions:

This demonstration board (DEMO BOARD) kit being sold or provided by Linear Technology is intended for use for **ENGINEERING DEVELOPMENT OR EVALUATION PURPOSES ONLY** and is not provided by LTC for commercial use. As such, the DEMO BOARD herein may not be complete in terms of required design-, marketing-, and/or manufacturing-related protective considerations, including but not limited to product safety measures typically found in finished commercial goods. As a prototype, this product does not fall within the scope of the European Union directive on electromagnetic compatibility and therefore may or may not meet the technical requirements of the directive, or other regulations.

If this evaluation kit does not meet the specifications recited in the DEMO BOARD manual the kit may be returned within 30 days from the date of delivery for a full refund. **THE FOREGOING WARRANTY IS THE EXCLUSIVE WARRANTY MADE BY THE SELLER TO BUYER AND IS IN LIEU OF ALL OTHER WARRANTIES, EXPRESSED, IMPLIED, OR STATUTORY, INCLUDING ANY WARRANTY OF MERCHANTABILITY OR FITNESS FOR ANY PARTICULAR PURPOSE. EXCEPT TO THE EXTENT OF THIS INDEMNITY, NEITHER PARTY SHALL BE LIABLE TO THE OTHER FOR ANY INDIRECT, SPECIAL, INCIDENTAL, OR CONSEQUENTIAL DAMAGES.**

The user assumes all responsibility and liability for proper and safe handling of the goods. Further, the user releases LTC from all claims arising from the handling or use of the goods. Due to the open construction of the product, it is the user's responsibility to take any and all appropriate precautions with regard to electrostatic discharge. Also be aware that the products herein may not be regulatory compliant or agency certified (FCC, UL, CE, etc.).

No License is granted under any patent right or other intellectual property whatsoever. **LTC assumes no liability for applications assistance, customer product design, software performance, or infringement of patents or any other intellectual property rights of any kind.**

LTC currently services a variety of customers for products around the world, and therefore this transaction **is not exclusive**.

**Please read the DEMO BOARD manual prior to handling the product.** Persons handling this product must have electronics training and observe good laboratory practice standards. **Common sense is encouraged.**

This notice contains important safety information about temperatures and voltages. For further safety concerns, please contact a LTC application engineer.

Mailing Address:

Linear Technology  
1630 McCarthy Blvd.  
Milpitas, CA 95035

Copyright © 2004, Linear Technology Corporation