

ON/OFF
POWER SWITCH

419.46 mm
[16.514 in]

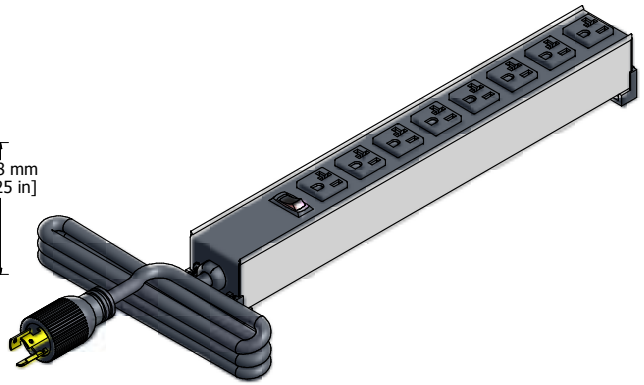
53.98 mm
[2.125 in]

52.32 mm
[2.060 in]

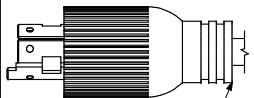
116.14 mm
[4.573 in]

40.00 mm TYP
[1.575 in]

ASSEMBLY - VIEW FROM TOP



ISOMETRIC VIEW



6' FOOT TWIST
POWER CORD
(NEMA L5-20P)

413.11 mm
[16.264 in]

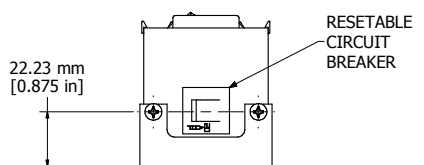
2.31 mm
[0.091 in]

59.28 mm
[2.334 in]

387.71 mm
[15.264 in]

9.53 mm
[0.375 in]

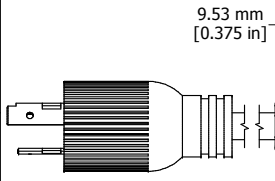
ASSEMBLY - VIEW FROM SIDE



ASSEMBLY - VIEW FROM END

22.23 mm
[0.875 in]

RESETTABLE
CIRCUIT
BREAKER



9.53 mm
[0.375 in]

400.41 mm
[15.764 in]

14.29 mm
[0.563 in]

25.40 mm
[1.000 in]

R4.37 mm
[0.172 in]

ASSEMBLY - VIEW FROM BOTTOM

1589H8**
Finish - Top - Black Painted Steel
Bottom - Aluminum Extrusion
Rated - 120 VAC, 60 Hz, 20 Amps
Approvals - CSA Certified Standards C22.2 (No. 21-95, 42-99)
- UL Listed, Standard UL1363
Cord Length
1589H8C1 - 6' Foot Twist Power Cord (NEMA L5-20P)
1589H8D1 - 15' Foot Twist Power Cord (NEMA L5-20P)



www.hammondmfg.com