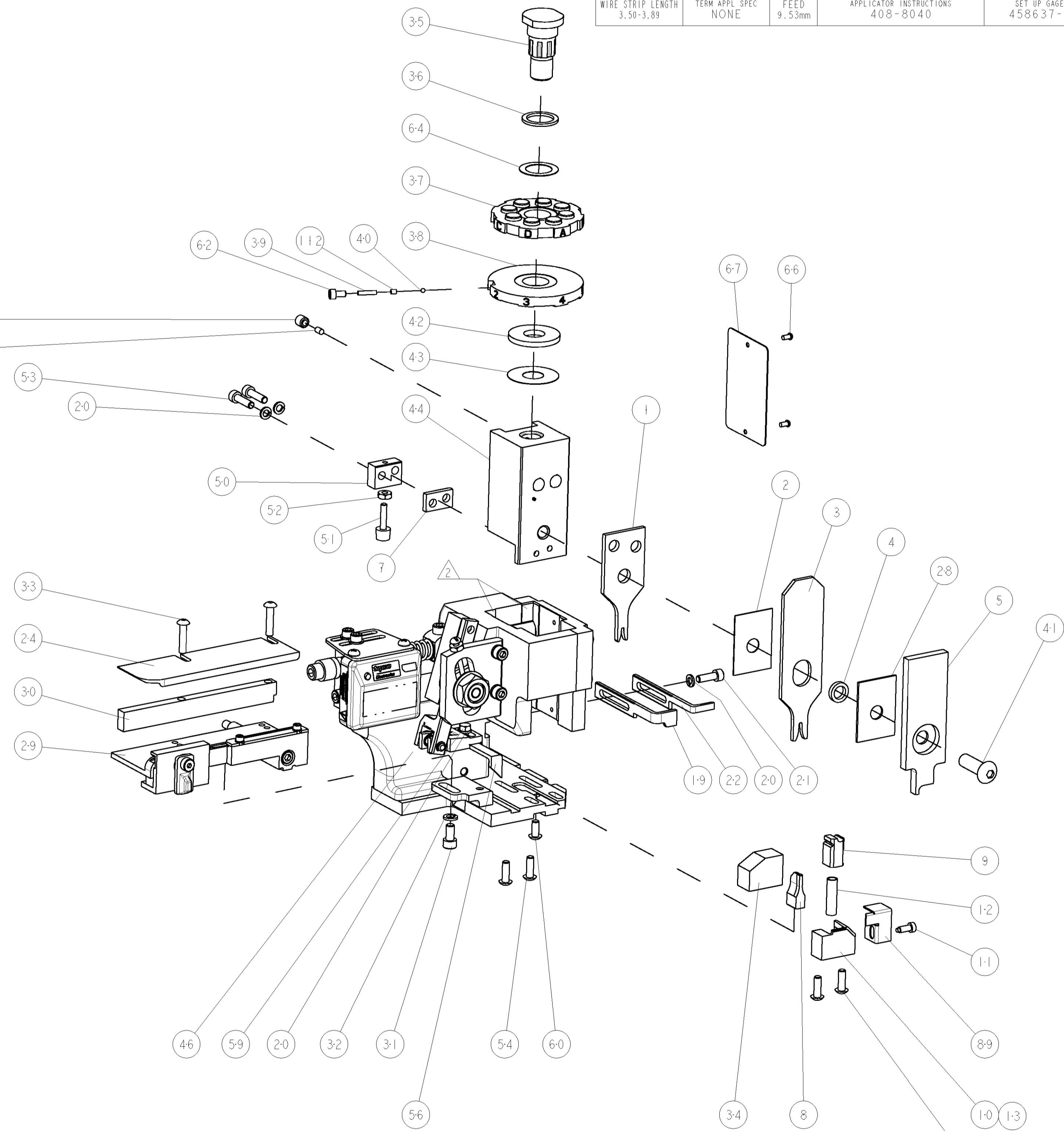
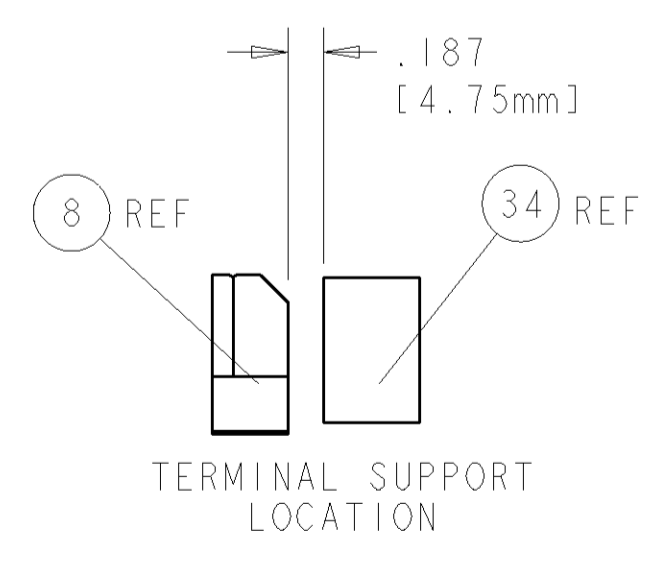
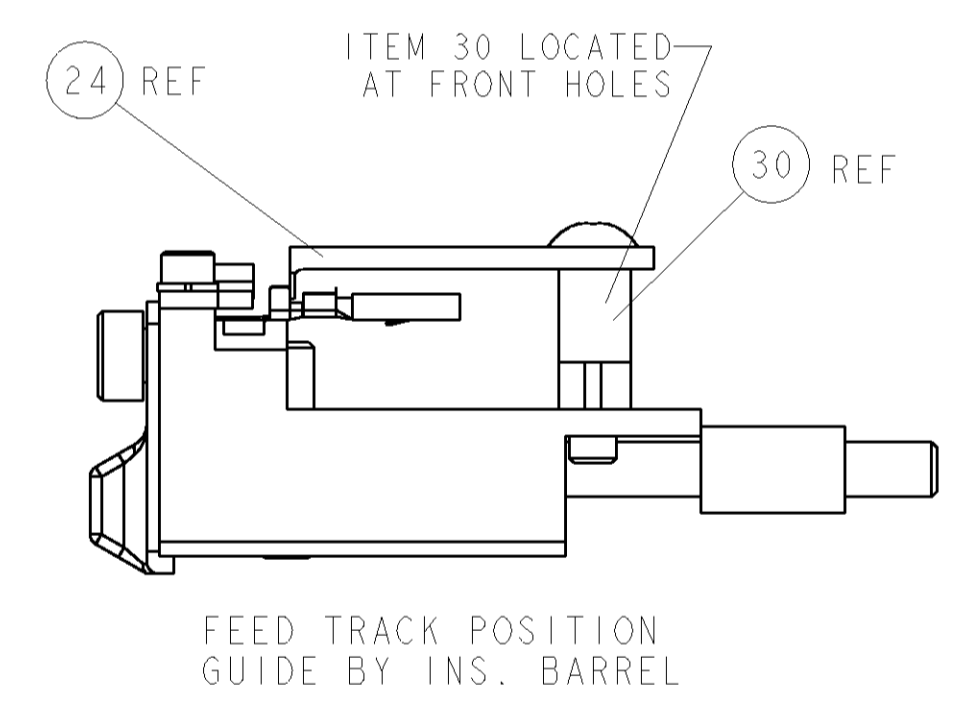
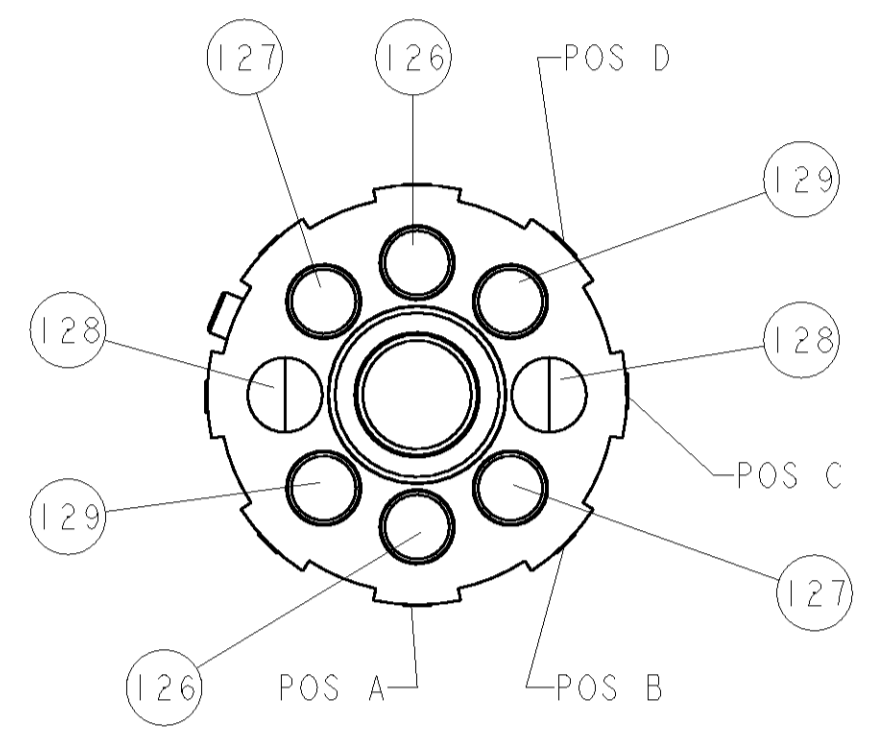


PART NUMBER	REV	FIRST USED	POWER UNIT	FEED TYPE	DESCRIPTION
1852604-1	A	122500-1	LEADMAKER	POST FEED	CUTS CARRIER
1852604-2	A	565435-5	BENCH MODEL K	PRE FEED	CUTS CARRIER
1852604-3	A	354500-1	BENCH MODEL G	PRE FEED	CUTS CARRIER
1852604-6	A	122500-1	LEADMAKER	POST FEED	CONTINUOUS CARRIER
7-1852604-7	A	-	-	-	SPARE PARTS

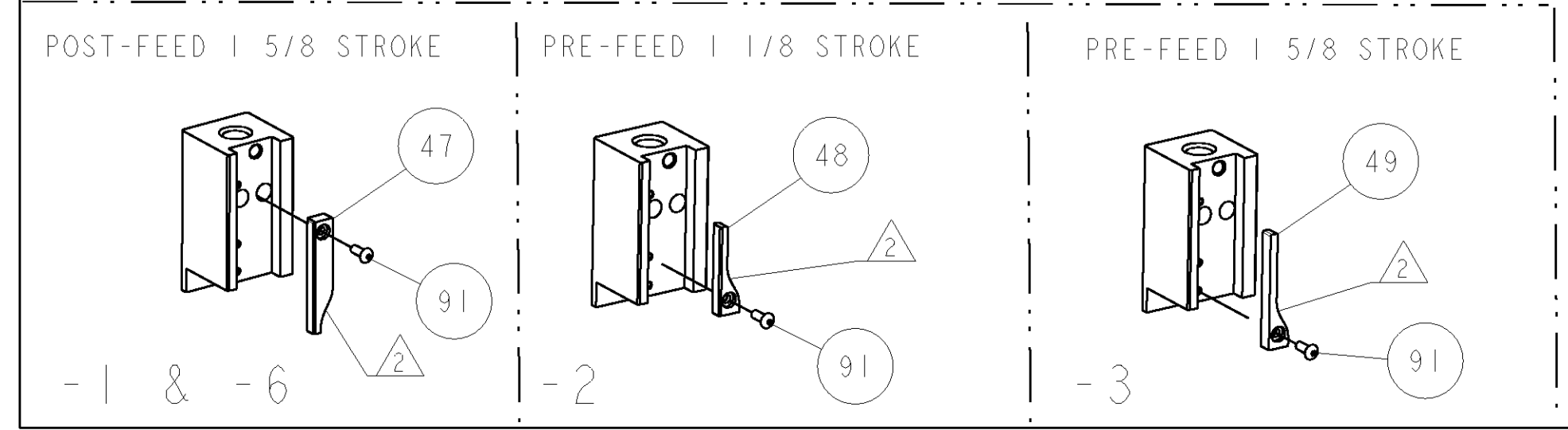


TE PN		COMP PN	LUMBERG TERMINAL - TE CRIMP SPECS	
1949575-1	4	0364		
1949576-1	4	0369		
			CRIMP HEIGHT	WIRE SIZE
		A	1.06±0.05mm [ .042±.002 ]	0.75mm2
		B	1.04±0.05mm [ .041±.002 ]	0.5mm2
		C	.97±0.05mm [ .038±.002 ]	0.35mm2
		D	.91±0.05mm [ .036±.002 ]	0.25mm2
			CRIMP SIZE	TYPE
			1.57mm [ .062 ]	F
			2.16mm [ .085 ]	O
				Ø1.8mm MAX
WIRE STRIP LENGTH	TERM APPL SPEC	FEED	APPLICATOR INSTRUCTIONS	SET UP GAGE
3.50-3.89	NONE	9.53mm	408-8040	458637-1

- △ RECOMMENDED SPARE PARTS
- △ GREASE LIGHTLY
- △ GUARD MUST BE IN PLACE WHEN OPERATING APPLICATOR IN A BENCH MACHINE
- △ STRIP GUIDE MUST BE ADJUSTED WHEN CHANGING FROM ONE TERMINAL TO ANOTHER.



LOC	DIST	P	LTR	DESCRIPTION	DATE	DWN	APPR	
A	66			RELEASED	04DEC2007	BH	BH	
-	2	2	2	2	-	4-354779-6	PIN, WIRE DISC, .3220	129
-	2	2	2	2	-	4-354779-0	PIN, WIRE DISC, .3190	128
-	2	2	2	2	-	3-354779-5	PIN, WIRE DISC, .3165	127
-	2	2	2	2	-	3-354779-4	PIN, WIRE DISC, .3160	126
△	-	-	REF	-	..	455749-1	GUARD WINDOW	116
△	-	-	REF	-	..	679532-1	INSERT, GUARD	115
-	1	1	1	1	-	690603-1	SPRING ASSIST AMP-O-MATOR APPLICATOR	112
-	1	1	1	1	-	1-21002-7	SCR, BTN SKT HD CAP 6-32 X .375	91
-	1	1	1	1	-	318563-1	GUARD, FRONT CHIP	89
-	1	1	1	1	-	4088040	SF APPL INST 408-8040	72
-	1	1	1	1	-	217238-1	GENERAL INSTRUCTION PKG	71
-	1	1	1	1	-	461264-1	PLATE, IDENTIFICATION	67
-	2	2	2	2	-	21017-2	SCREW, DRIVE	66
-	1	1	1	1	-	986950-1	WASHER, FLAT PRECISION	64
-	1	1	1	1	-	21009-2	SCR, SET, SELF LOCKING 1/4-20 X .250	63
-	1	1	1	1	-	23030-1	SCR, SKT HD CAP 6-32 X .25	62
-	1	1	1	1	-	22733-8	SCR, BHSC, SELF-LOCKING, 8-32 X .375	60
-	1	1	1	1	-	2-22603-0	SCR, HEX HD CAP 8-32 X .312	59
-	1	1	1	1	-	458537-2	PAWL, FEED	56
-	4	4	4	4	-	2-21002-2	SCR, BTN SKT HD CAP 8-32 X .500	54
-	2	2	2	2	-	2-21000-8	SCR, SKT HD CAP 8-32 X .625	53
-	1	1	1	1	-	21018-5	NUT, HEX, REG 6-32	52
-	1	1	1	1	-	811242-2	BUMPER, HOLD DOWN	51
-	1	1	1	1	-	690753-1	SPACER, TONKER	50
-	-	-	-	-	..	690602-6	CAM, PRE FEED, 1 5/8	49
-	-	-	-	-	..	690602-5	CAM, PRE FEED, 1 1/8	48
-	1	-	-	-	-	690501-4	CAM, POST FEED, 1 5/8	47
-	1	1	1	1	-	459456-1	APPL. BASIC SUB ASSY (SIDE WISE MOCA)	46
-	1	1	1	1	-	690191-1	PLUG, NYLON	45
-	1	1	1	1	-	455673-1	RAM, SIDE FEED	44
-	1	1	1	1	-	690125-1	SHIM SUB-ASSY	43
-	1	1	1	1	-	1-690124-4	WASHER, RAM (.120)	42
-	1	1	1	1	-	7-21002-9	SCR, BTN SKT HD CAP 5/16-24 X 1.00	41
-	1	1	1	1	-	23241-6	BALL, STEEL	40
-	1	1	1	1	-	690170-1	SPRING, COMPRESSION	39
-	1	1	1	1	-	690142-1	DISC, INSULATION	38
-	1	1	1	1	-	354777-1	WIRE DISC, ASSEMBLY	37
-	1	1	1	1	-	22480-5	SPRING, COMPRESSION	36
-	1	1	1	1	-	690212-1	POST, RAM	35
-	1	1	1	1	-	3-690786-3	TERMINAL SUPPORT	34
-	2	2	2	2	-	2-21002-4	SCR, BTN SKT HD CAP 8-32 X .750	33
-	1	1	1	1	-	21024-5	WASHER, SPRG LOCK, REG NO 10	32
-	1	1	1	1	-	3-21000-4	SCR, SKT HD CAP 10-32 X .375	31
-	1	1	1	1	-	1-1320908-5	SPACER, STRIP GUIDE	30
-	1	1	1	1	-	1633091-1	ASSEMBLY, STRIP GUIDE	29
-	1	1	1	1	-	1-455888-0	SPACER, CRIMPER	28
-	1	1	1	1	-	1320928-1	PLATE, STRIP GUIDE	24
-	1	1	1	1	-	690472-2	STRIPPER	22
-	1	1	1	1	-	2-21000-7	SCR, SKT HD CAP 8-32 X .500	21
-	4	4	4	4	-	21024-4	WASHER, SPRG LOCK, REG NO 8	20
-	-	-	-	-	-	691353-1	STRIPPER	19
△	-	-	-	-	-	679625-1	SHEAR HOLDER, FRONT (NO CUT)	13
△	-	1	1	1	-	3-22280-3	SPRING, COMPRESSION	12
△	-	1	1	1	-	690461-1	STOP, SHEAR	11
△	-	-	-	-	-	690459-1	SHEAR HOLDER, FRONT	10
△	-	1	1	1	-	462006-1	FLOATING SHEAR, FRONT	9
△	1	1	1	1	-	3-1633107-7	ANVIL, COMBINATION .062	8
△	-	1	1	1	-	240641-5	SPACER	7
-	-	-	-	-	..	-	-	6
-	1	1	1	1	-	2-455889-0	DEPRESSOR, SHEAR	5
-	1	1	1	1	-	238011-4	BLOCK, CRIMPER SPACER	4
△	1	1	1	1	-	7-904741-5	CRIMPER, INSUL O PREMIUM	3
△	-	1	1	1	-	455888-4	SPACER, CRIMPER	2
△	1	1	1	1	-	4-456403-4	CRIMPER, WIRE PREMIUM	1



DIMENSIONS:		TOLERANCES UNLESS OTHERWISE SPECIFIED:	
INCHES	0 PLC ±.01	1 PLC ±.01	2 PLC ±.01
	3 PLC ±.001	4 PLC ±.001	ANGLES ±.001
MATERIAL	FINISH	WEIGHT	CUSTOMER DRAWING
-	-	-	-

APPROVED	DATE	BY	FOR
B. HIGMAN	14NOV2007	B. HIGMAN	14NOV2007
T. ELBIN	14NOV2007	T. ELBIN	14NOV2007

PRODUCT SPEC	NAME	SIZE	CAGE CODE	DRAWING NO	RESTRICTED TO
-	SIDE FEED HDM APPLICATOR	-	-	-	-
APPLICATION SPEC	SCALE	3:5	SHEET	1 OF 1	REV
-	A1	00779	C=1852604	-	A

CUSTOMER VIEWABLE ASSEMBLY