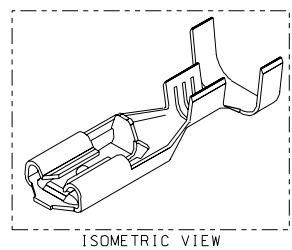
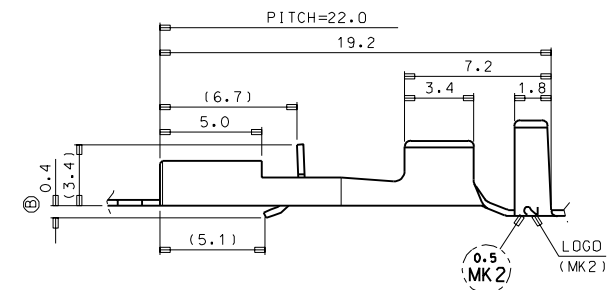
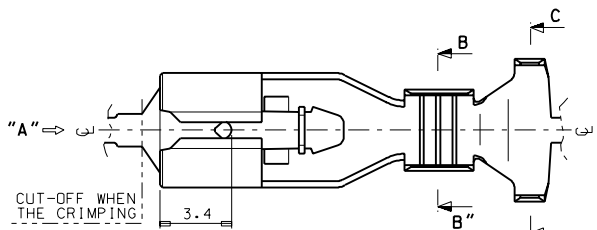
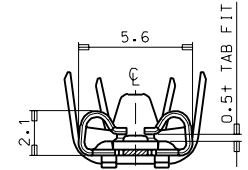


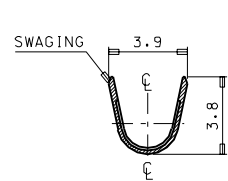
DWG. NO. SD-35068-9902  
 SIMILAR ITEM  
 PROJECT NO. .187 MP-L-LOCK CONN.  
 DO NOT SCALE DRAWING DIMENSION IN METRIC



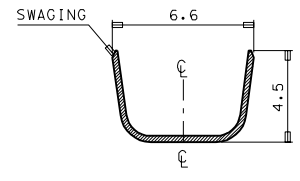
- NOTES
1. MATERIAL : BRASS, 0.30mm THICKNESS
  2. FINISH : PRE-PLATED TIN
  3. MATING TAB THICKNESS : 0.50mm
  4. RECOMMENDED LENGTH OF WIRE STRIP IS 4.4-5.0mm.
  5. APPLICABLE WIRE : AWG #20+#20  
AWG #20+#18  
AWG #18+#18



VIEW "A"



SEC' : B-B"



SEC' : C-C"

REVISED	EC NO. KOR1998-0101 DRWG. J.-S.KANG 98/08/24 CHKD. B.-K. CHO1 APPR. C.-W. LEE	QUALITY SYMBOLS MAJOR CRITICAL	GENERAL TOLERANCES (UNLESS SPECIFIED)		SCALE	DESIGN UNITS	DIMENSIONS:		SHT	REV
					6/1	mm INCH	mm INCH	mm ONLY		REVISE ON CAD ONLY
C	REV	DESCRIPTION	4 PLACES	±0.	±.	DRAWN BY B. DATE		THIRD ANGLE PROJECTION TITLE: .187 MP-L-LOCK TM'L(L) (0.5+ TAB FIT)		
			3 PLACES	±0.	±.	J. S. KANG 97/12/02				
			2 PLACES	±0.2	±.	CHECKED BY & DATE				
			1 PLACE	±0.3	±.	B. K. CHO1				
			ANGULAR: ±		APPROVED BY & DATE		MOLEX INCORPORATED KOREA			
			1°		C. W. LEE					
			CAD FILENAME		MATERIAL NO.	DRAWING NO.	SHEET NO.			
			s35068.d.dgn		35068-9902	SD-35068-9902	1 of 1			
			DRAFT WHERE APPLICABLE MUST REMAIN WITHIN DIMENSIONS		THIS DRAWING CONTAINS INFORMATION THAT IS PROPRIETARY TO MOLEX INCORPORATED AND SHOULD NOT BE USED WITHOUT WRITTEN PERMISSION.					