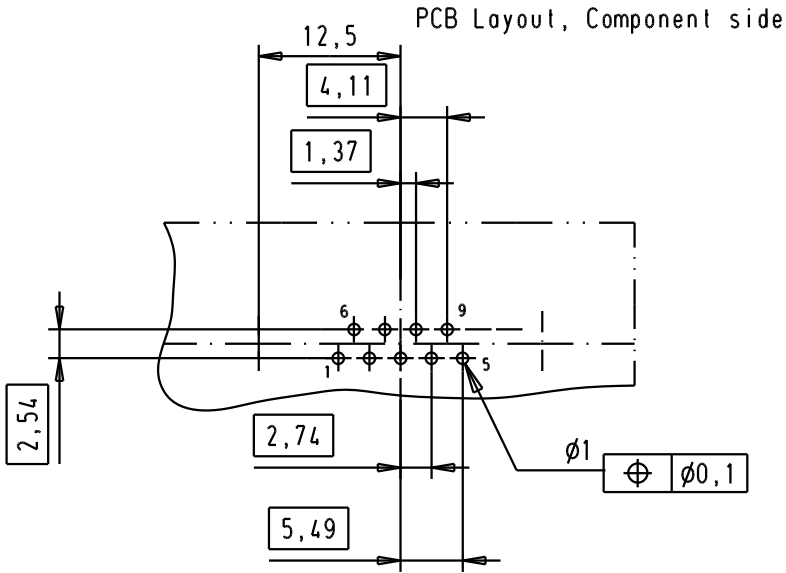
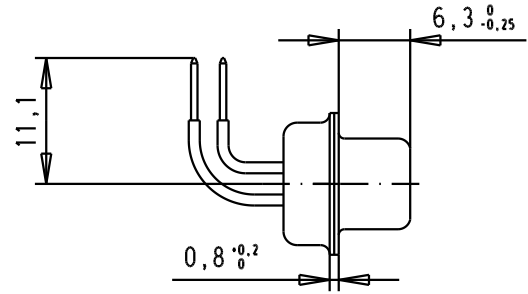
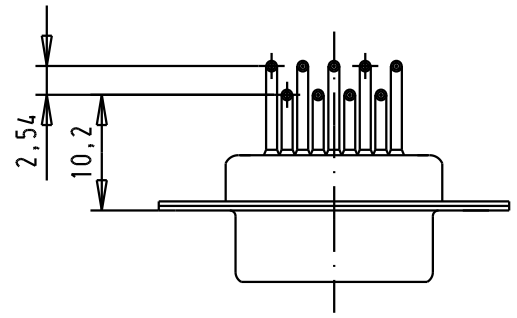
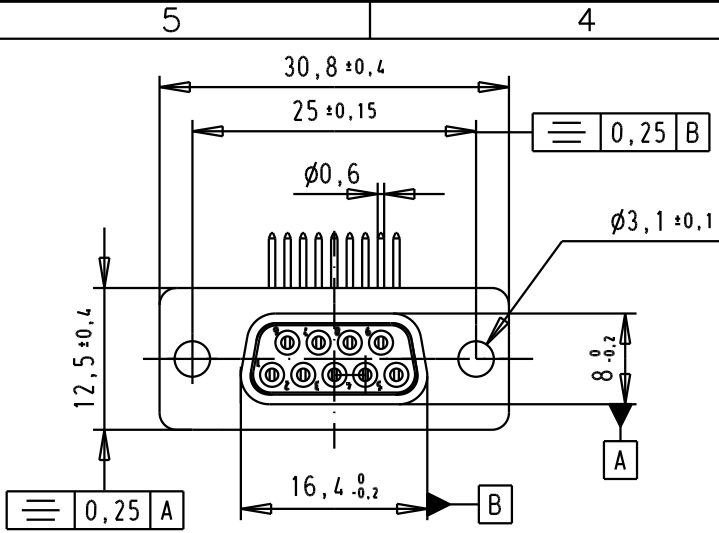


D  
C  
B  
A





SPECIFICATION

Mating Cycles	500
Filter type	C
Capacitance	1000pf ± 20%
Working Voltage	100V
Current Rating	7,5A
Insulation Resistance	>1GΩ

Minimum Insertion Loss

FREQUENCY (MHz)	ATTENUATION dB
5	1dB
10	3dB
50	12dB
100	20dB
500	34dB
1000	30dB

				Dat.	Name	 All Dim. in mm Orig. Size DIN A 4	D-Sub, female, angled, 9 Poles, with turned solder pin, and hole	Me?Ms Lab/ Scale 1.5:1
			Detail.	8-Jul-02	CV			
			Insp.					
32114	08/12/03	AF	Stand.				TB 09641147230	Blatt/ Page 1 / 1
31576	08/12/03	AF	HARTING EURL					
31058	8-Jul-02	CV	F-95972 Paris					
Mod.	Dat.	Name	Sub.					