

# Customer Information Sheet

DRAWING No.: M80-485XXXX

SHEET 2 OF 2

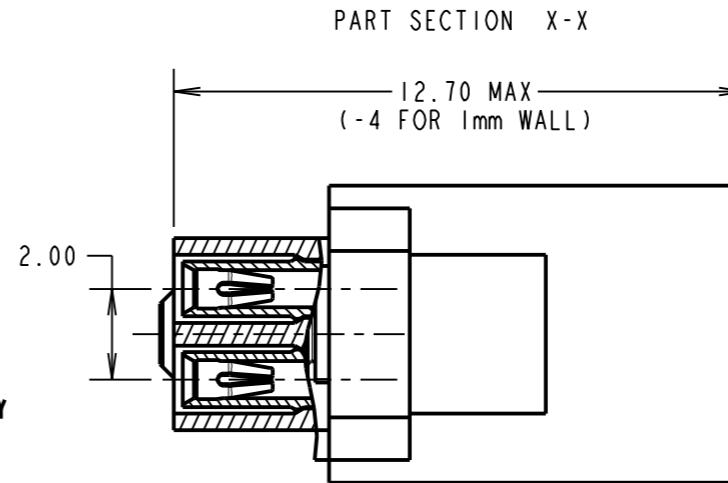
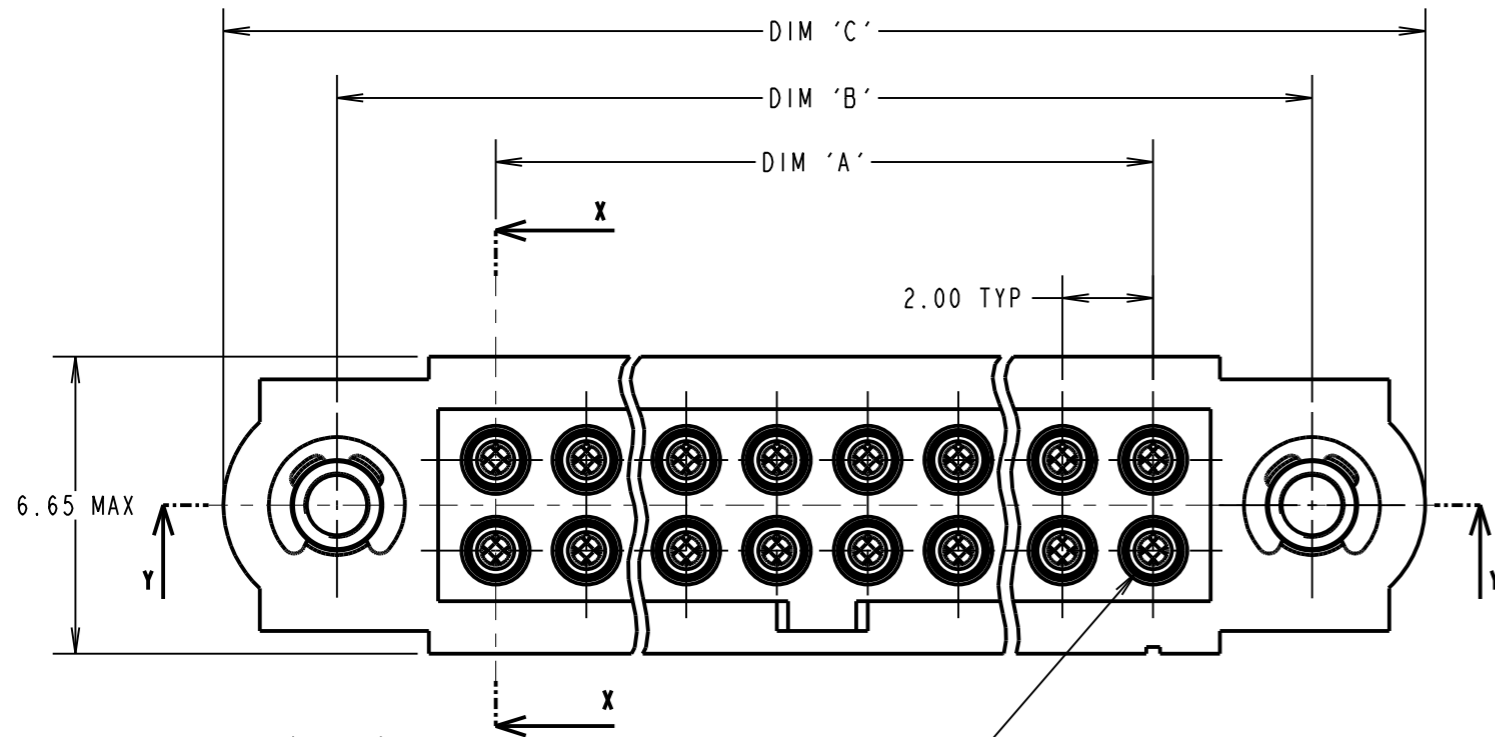
IF IN DOUBT - ASK

©

NOT TO SCALE

THIRD ANGLE PROJECTION

ALL DIMENSIONS IN mm



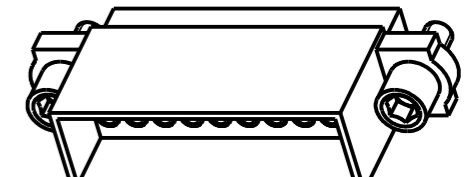
2 x M2x0.4-6g

CONTACT No. 1

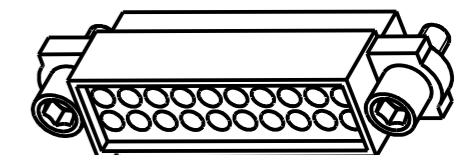
POTTING WALL HEIGHT  
SEE ORDER CODE

2.00 A/F HEX SOCKET

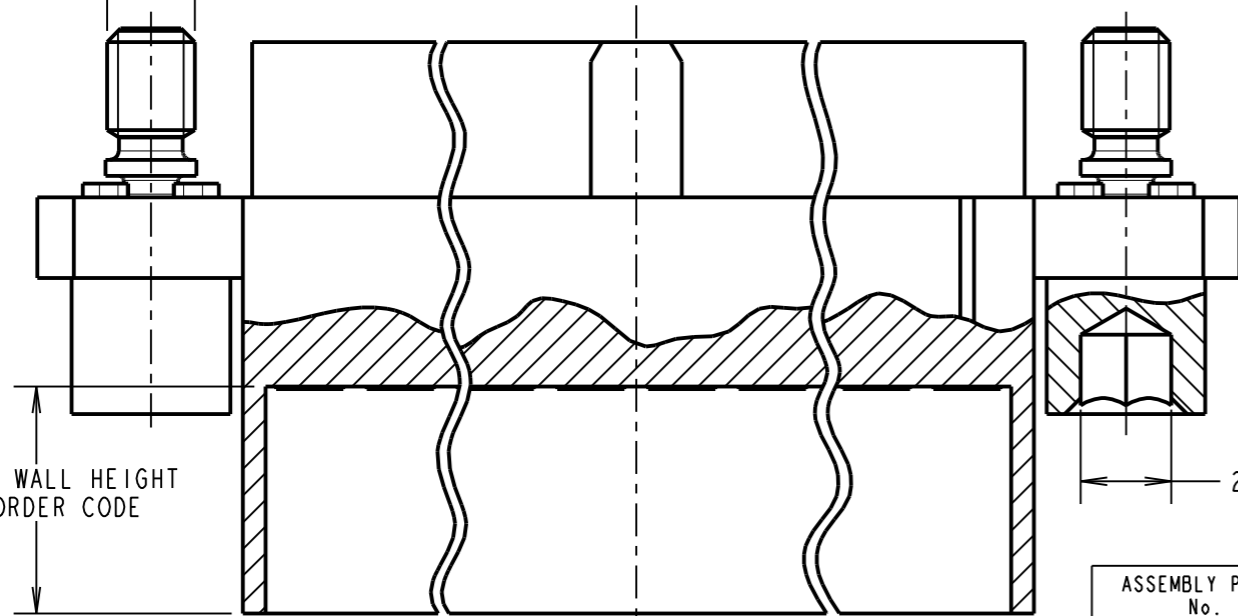
**SPECIFICATIONS:**  
**MATERIAL:**  
 MOULDING = GLASS-FILLED PPS, UL94V-0, BLACK  
 CONTACT CLIP = BERYLLIUM COPPER  
 CONTACT SHELL = BRASS  
 JACKSCREW, CIRCLIP = STAINLESS STEEL  
**FINISH:**  
 05 = 0.3µ GOLD CLIP, 0.25-0.3µ GOLD SHELL  
 42 = 0.3µ GOLD CLIP, 3.5-5.0µ 100% TIN SHELL  
**ELECTRICAL:**  
 CURRENT RATING AT 25°C = 3.0A MAX  
 CURRENT RATING AT 85°C = 2.2A MAX  
 WORKING VOLTAGE = 800V AC/DC  
 VOLTAGE PROOF = 1200V AC/DC  
 CONTACT RESISTANCE = 25mΩ MAX  
 INSULATION RESISTANCE = 100MΩ MIN  
**MECHANICAL:**  
 DURABILITY = 500 OPERATIONS  
 INSERTION FORCE (∅0.5mm GAUGE) = 2N MAX  
 WITHDRAWAL FORCE (∅0.5mm GAUGE) = 0.2N MIN  
**ENVIRONMENTAL:**  
 TEMPERATURE RANGE = -55°C TO +125°C  
**PACKING:**  
 LOOSE  
 FOR COMPLETE SPECIFICATION, SEE  
 COMPONENT SPECIFICATION C005XX  
 (LATEST ISSUE)



5mm POTTING WALL HEIGHT



1mm POTTING WALL HEIGHT



PART SECTION Y-Y

| ASSEMBLY PART No. | No. OF CONTACTS | DIM 'A' | DIM 'B' | DIM 'C' |
|-------------------|-----------------|---------|---------|---------|
| M80-48506XXX      | 6               | 4.00    | 11.00   | 16.00   |
| M80-48510XXX      | 10              | 8.00    | 15.00   | 20.00   |
| M80-48512XXX      | 12              | 10.00   | 17.00   | 22.00   |
| M80-48514XXX      | 14              | 12.00   | 19.00   | 24.00   |
| M80-48518XXX      | 18              | 16.00   | 23.00   | 28.00   |
| M80-48520XXX      | 20              | 18.00   | 25.00   | 30.00   |
| M80-48526XXX      | 26              | 24.00   | 31.00   | 36.00   |
| M80-48534XXX      | 34              | 32.00   | 39.00   | 44.00   |
| M80-48542XXX      | 42              | 40.00   | 47.00   | 52.00   |
| M80-48550XXX      | 50              | 48.00   | 55.00   | 60.00   |

**NOTES:**

- CONNECTORS ARE SUPPLIED WITH CONTACTS LOOSE.
- FOR EXTRA CONTACTS, USE PART NUMBER M80-0110005 FOR M80-485XX05 AND M80-0110001 FOR M80-485XX42.
- RECOMMENDED WIRE TYPE = BS 3G 210 TYPE A, PTFE INSULATED 22 AWG. MAX INSULATION DIAMETER = ∅1.10mm, STRIP WIRE BY 2.00mm.
- RECOMMENDED HAND CRIMP TOOL = M22520/2-01 WITH POSITIONER T5747. REFER TO TOOLING INSTRUCTION SHEET IS-01 FOR COMPLETE CRIMPING INSTRUCTIONS.
- CONTACT INSERTION AND EXTRACTION TOOL = Z80-280. REFER TO TOOLING INSTRUCTION SHEET IS-25 FOR ASSEMBLY INSTRUCTIONS.

ORDER CODE:

**M80-485XXXXX**

TOTAL No. OF CONTACTS  
 06, 10, 12, 14, 18, 20,  
 26, 34, 42, 50

FINISH  
 05 - GOLD CLIP, GOLD SHELL  
 42 - GOLD CLIP, 100% TIN SHELL

POTTING WALL HEIGHT  
 BLANK = 5mm  
 A = 1mm

**HARWIN**

www.harwin.com  
 technical@harwin.com

THIS DRAWING AND ANY INFORMATION OR DESCRIPTIVE MATTER SET OUT HEREON ARE CONFIDENTIAL AND COPYRIGHT PROPERTY OF THE HARWIN GROUP AND MUST NOT BE DISCLOSED, LOANED, COPIED OR USED FOR MANUFACTURING, TENDERING OR FOR ANY OTHER PURPOSE WITHOUT THEIR WRITTEN PERMISSION.

**TOLERANCES**  
 X. = ±1mm  
 X.X = ±0.50mm  
 X.XX = ±0.10mm  
 X.XXX = ±0.01mm  
 ANGLES = ±5°  
 UNLESS STATED

**MATERIAL:**

SEE ABOVE

**FINISH:** SEE ABOVE

**S/AREA:**

mm<sup>2</sup>

**TITLE:** JACKSCREW DATAMATE  
 DIL CRIMP (LARGE BORE)  
 POTTING WALL FEMALE ASSEMBLY

**DRAWING NUMBER:**

**M80-485XXXX**

|                       |      |          |        |
|-----------------------|------|----------|--------|
| MSP                   | 8    | 07.10.15 | 13110  |
| NAME                  | ISS. | DATE     | C/NOTE |
| APPROVED: M.PERREN    |      |          |        |
| CHECKED: M.PLESTED    |      |          |        |
| DRAWN: MARK G PLESTED |      |          |        |
| CUSTOMER REF.:        |      |          |        |
| ASSEMBLY DRG:         |      |          |        |