



## QUICK START PROCEDURE

Demonstration circuit DC1477B is an easy way to evaluate the performance of the LTM4609EV. Please refer to Figure 1 for proper measurement equipment setup and follow the procedure below:

1. Place jumpers in the following positions for a typical  $30V_{OUT}$  application:

RUN	CLOCK	MODE	START
ON	PROG	CCM	SSO

2. With the power supply off, connect the input power supply, load and meters as shown in Figure 1. Preset the load to 0A and  $V_{IN}$  supply between 10V to 36V.
3. Turn on the power at the input. The output voltage should be  $30V \pm 2\%$ .
4. Once the proper output voltage is established, adjust the load within the operating range and observe the output voltage regulation, ripple voltage, efficiency and other parameters. A cooling fan and heat sink are necessary for  $V_{IN} < 10V$  and  $I_{OUT} = 3A$ .

5. To measure input and output ripple, please refer to Figure 2 for proper setup.
6. To adjust the switching frequency turn off the power supply and modify R6 and R7. Do not allow voltage at pin PLLFLTR to exceed 2.4V.
7. Inductor and  $R_{SENSE}$  should be modified to accommodate certain input and output condition. Refer to the data sheet for details.
8. The input filter formed by CIN2, L2 and L3, CIN3 and CIN4 is for the purpose of reducing the input voltage ripple. The magnetic beads L2 and L3 are not necessary, but they help to reduce the high frequency ringings on the input supply significantly. See Figure 5 for details.
9. The optional components Rsnb1 and Csnb1, Rsnb2 and Csnb2 can be used to form RC snubber circuits on the switching nodes, which may help to reduce the output ripple. Refer to the data sheet for details.

# QUICK START PROCEDURE

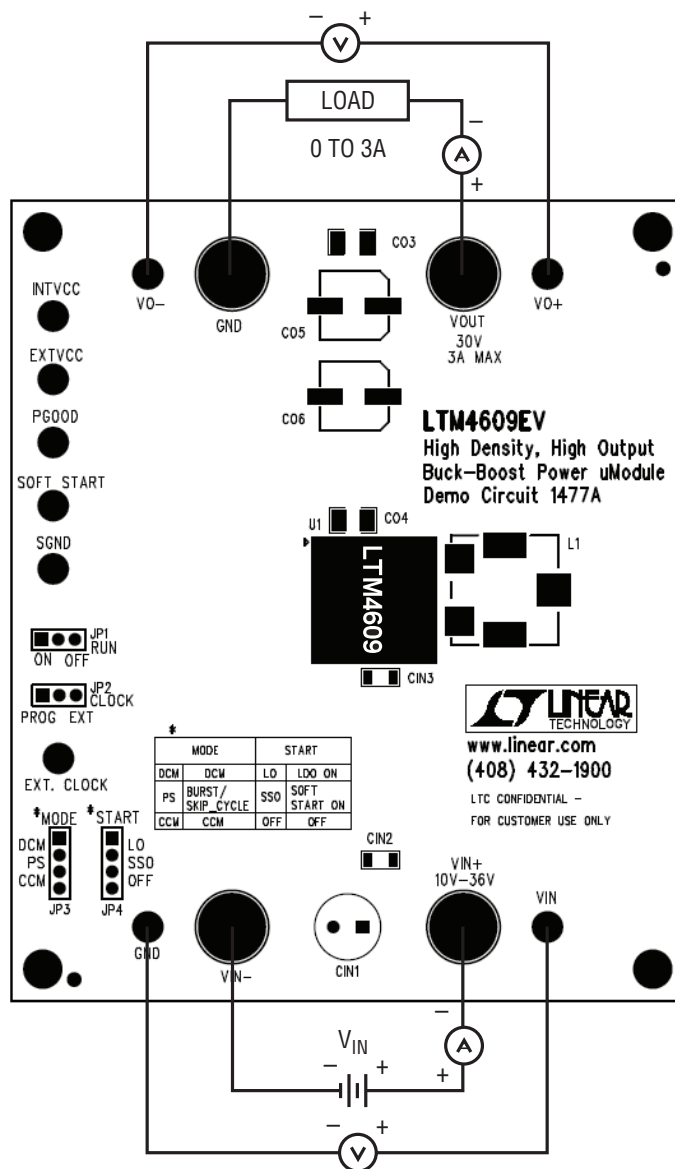


Figure 1. Test Setup of DC1477B

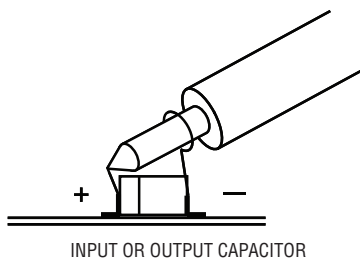


Figure 2. Proper Scope Probe Placement for Measuring Input or Output Ripple

## QUICK START PROCEDURE

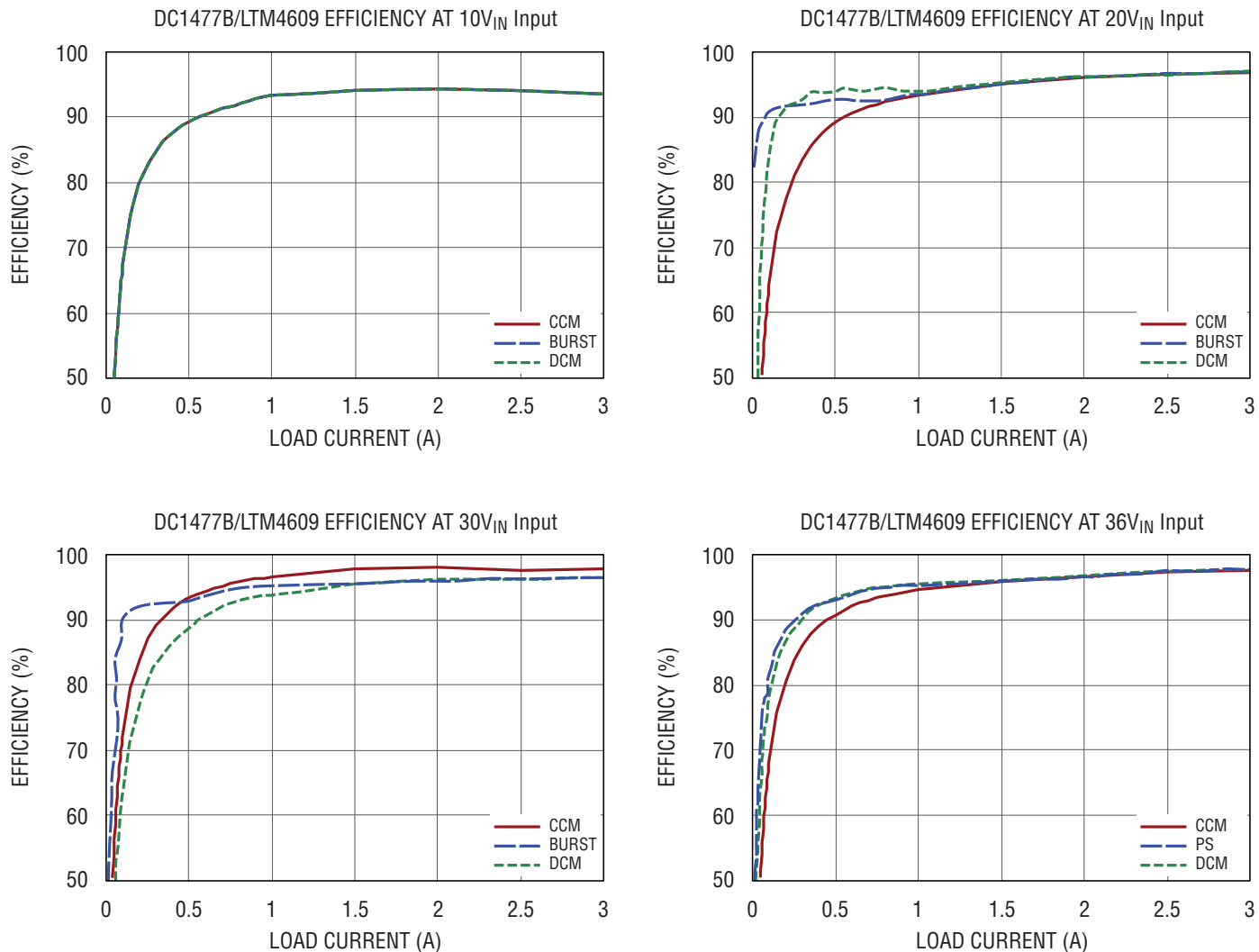
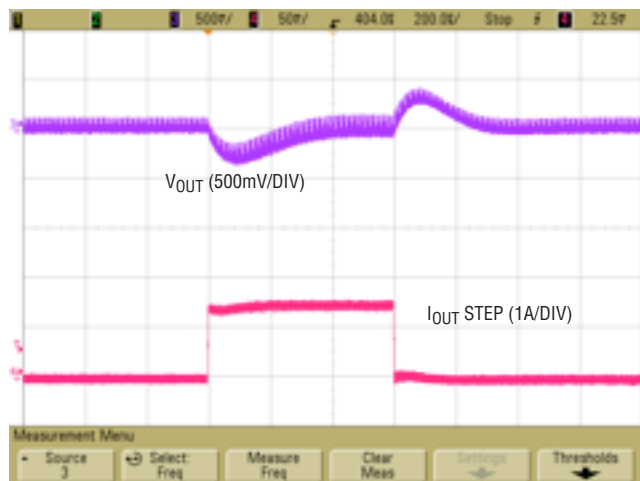
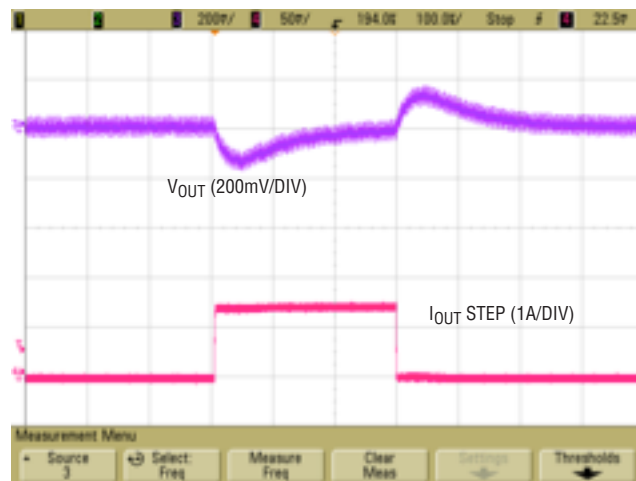


Figure 3. Measured Efficiency at Different  $V_{IN}$

## QUICK START PROCEDURE

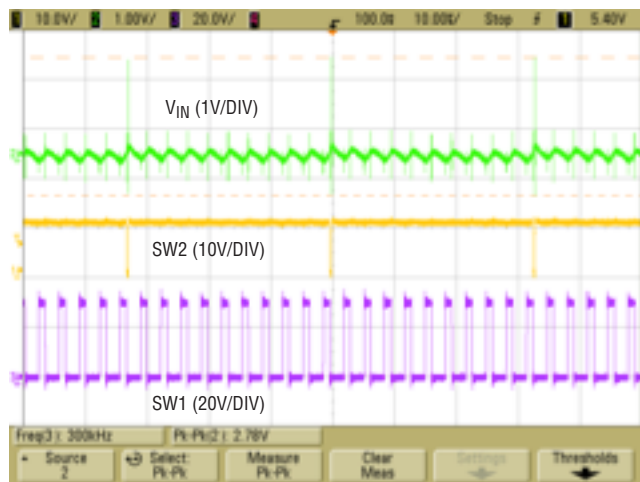


$V_{IN} = 10V$ ,  $V_{OUT} = 30V$ , CCM MODE  
 1.5A to 3A LOAD STEP  
 $C_{OUT} = 2 \times 10\mu F$  CERAMIC +  $2 \times 100\mu F$  ALUM

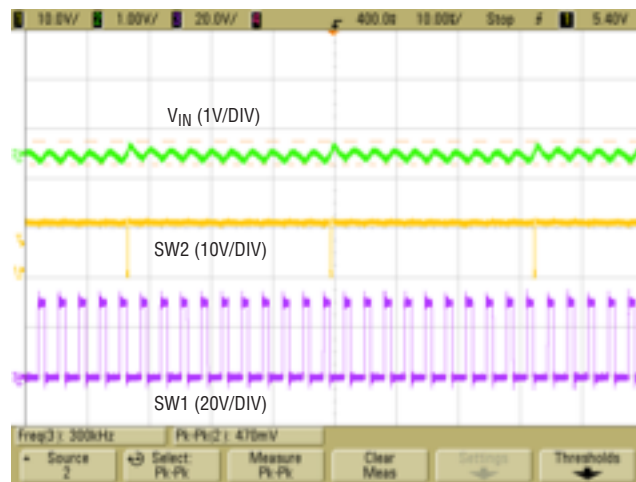


$V_{IN} = 36V$ ,  $V_{OUT} = 30V$ , CCM MODE  
 1.5A to 3A LOAD STEP  
 $C_{OUT} = 2 \times 10\mu F$  CERAMIC +  $2 \times 100\mu F$  ALUM

Figure 4. Measured Load Transient Response (1.5A Step, 50% to 100%)



$V_{IN} = 10V$ ,  $V_{OUT} = 30V$ ,  $I_{OUT} = 3A$   
 W/O INPUT FILTER: SHORT L2 AND L3. REMOVE  $C_{IN2}$   
 $V_{IN}$  = PEAK-TO-PEAK RIPPLE = 2.78V



$V_{IN} = 10V$ ,  $V_{OUT} = 30V$ ,  $I_{OUT} = 3A$   
 W/ INPUT FILTER: STUFF L2, L3, AND  $C_{IN2}$   
 $V_{IN}$  PEAK-TO-PEAK RIPPLE = 0.47V

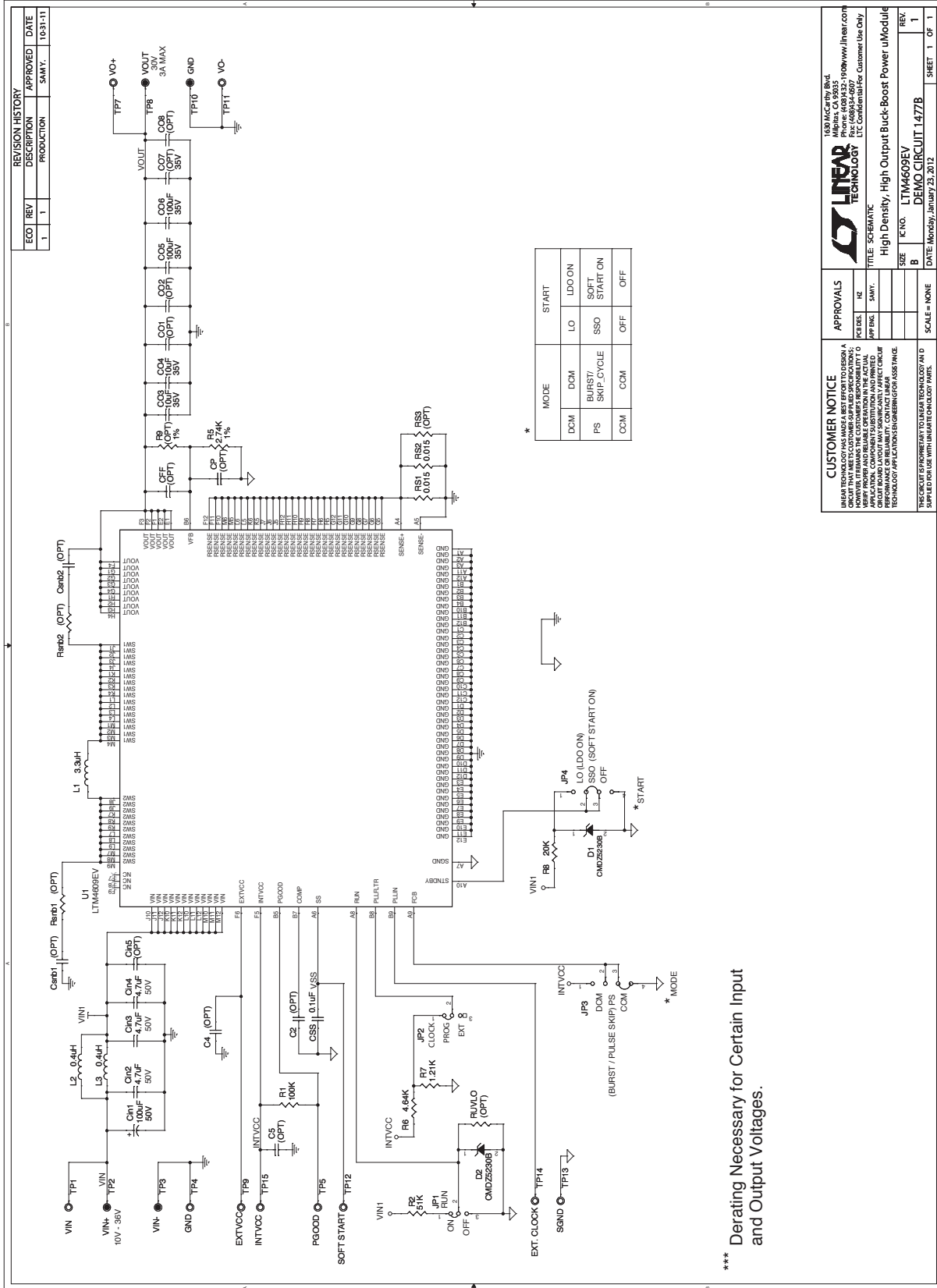
Figure 5. Input Voltage Ripple Measured at  $C_{IN1}$  with 300MHz BW Probe, with and without the Input Filter

# DEMO MANUAL DC1477B

## PARTS LIST

ITEM	QTY	REFERENCE	PART DESCRIPTION	MANUFACTURER/PART NUMBER
<b>Required Circuit Components</b>				
1	1	CSS	CAP., 0.1 $\mu$ F, X7R, 25V, 10%, 0603	AVX, 06033C104KAT2A
2	1	CIN1	CAP. ALUM. ELECT., 100 $\mu$ F, 50V, 20%, ME -WX SERIES, THROUGH-HOLE, STRAIGHT-PIN	SUN ELECTRONIC INDUSTRIES CORPORATION, 50ME100WX+TS
3	2	CO3, CO4	CAP., 10 $\mu$ F, X7R, 35V, 10%, 1210	MURATA, GRM32ER7YA106KA12L
4	3	CIN2, CIN3, CIN4	CAP., X7R, 4.7 $\mu$ F, 50V, 10%, 1206	TAIYO YUDEN, UMK316BJ475KL-T
5	2	CO5, CO6	CAP., ALUM., 100 $\mu$ F, 35V, 20%, HVH SERIES	SUN ELECTRONIC INDUSTRIES CORPORATION, 35HVH100M
6	1	L1	IND., POWER, 3.3 $\mu$ H, 20%, IHLP-5050FD-01	VISHAY, IHLP5050FDER3R3M01
7	1	R1	RES., 100k $\Omega$ , 5%, 1/10W, 0603	VISHAY, CRCW0603100KJNEA
8	1	R5	RES., 2.74k $\Omega$ , 1%, 1/10W, 0603	VISHAY, CRCW06032K74FKEA
9	1	R6	RES., 4.64k $\Omega$ , 1%, 1/10W, 0603	VISHAY, CRCW06034K64FKEA
10	1	R7	RES., 1.21k $\Omega$ , 1%, 1/10W, 0603	VISHAY, CRCW06031K21FKEA
11	2	RS1, RS2	RES., PWR. METAL STRIP, 0.015 $\Omega$ , 1%, 1/4W, 1206	VISHAY, WSL1206R0150FEA
12	1	U1	I.C., HIGH DENSITY, HIGH OUTPUT BUCK-BOOST $\mu$ Module, 15mm $\times$ 15mm $\times$ 2.82mm, LGA	LINEAR TECH., LTM4609EV#PBF
<b>Additional Demo Board Circuit Components</b>				
1	0	CIN5, Csnb1, Csnb2, C07 (OPT)	CAP., OPTION, 1206	OPT.
2	0	C2, C4, C5, CP, CFF (OPT)	CAP., OPTION, 0603	OPT.
3	0	CO1, CO2, CO8 (OPT)	CAP., OPTION, D3L	OPT.
4	2	D1, D2	DIODE, ZENER, 4.7V, 5%, 250mW, SOD-323	CENTRAL SEMI., CMDZ5230B TR LEAD FREE
5	2	L2, L3	IND., HIGH CURRENT, 50 $\Omega$ , 25%, 6A, 1806	FAIR-RITE PRODUCTS CORP., 2518065007Y6
6	1	R2	RES., 51k $\Omega$ , 5%, 1/10W, 0603	VISHAY, CRCW060351K0JNEA
7	1	R8	RES., 20k $\Omega$ , 1%, 1/10W, 0603	VISHAY, CRCW060320K0FKEA
8	0	RS3, Rsnb1, Rsnb2 (OPT)	RES., OPTION, 1206	OPT.
9	0	R9, RUVLO (OPT)	RES., OPTION, 0603	OPT.
<b>Hardware-For Demo Board Only</b>				
1	2	JP1, JP2	CONN., HEADER, 1 $\times$ 3, 2mm	SAMTEC, TMM-103-02-L-S
2	2	JP3, JP4	CONN., HEADER, 1 $\times$ 4, 2mm	SAMTEC, TMM-104-02-L-S
3	4	JP1, JP2, JP3, JP4	SHUNT, 2mm	SAMTEC, 2SN-BK-G
4	10	TP1, TP4, TP5, TP7, TP9, TP11-TP15	TEST POINT, TURRET, 0.094" MTG. HOLE	MILL-MAX, 2501-2-00-80-00-00-07-0
5	4	TP2, TP3, TP8, TP10	CONN., JACK, BANANA, NON-INSULATED, 0.218"	KEYSTONE, 575-4
6	4	MH1, MH2, MH3, MH4	STANDOFF, NYLON, SNAP-ON, 0.500"	KEYSTONE, 8833 (SNAP ON)

SCHEMATIC DIAGRAM



REVISION HISTORY		
ECO	REV	DESCRIPTION
1	1	PRODUCTION

DATE	APPROVED
10-31-11	SAM.Y.

LINEAR TECHNOLOGY  
 1391 California St.  
 Fremont, CA 94539  
 Phone: (408) 432-1900 www.linear.com  
 Fax: (408) 432-1999  
 E-mail: ltc@linear.com  
 © 2012 Linear Technology. All rights reserved.  
 LTC Confidential for Customer Use Only

TITLE: SCHEMATIC  
 High Density, High Output Buck-Boost Power uModule

SIZE: B  
 T.C. NO.: LTM4609EV  
 DATE: Monday, January 23, 2012  
 DEMO CIRCUIT 1477B

SCALE: NONE  
 REV: 1  
 SHEET 1 OF 1

**CUSTOMER NOTICE**  
 LINEAR TECHNOLOGY HAS MADE A BEST EFFORT TO DESIGN A BOARD LAYOUT THAT WILL BE FUNCTIONAL AND RELIABLE. HOWEVER, IT MAKES NO REPRESENTATION AS TO WHETHER THE BOARD LAYOUT WILL BE FUNCTIONAL AND RELIABLE IN YOUR APPLICATION. CUSTOMERS ARE RESPONSIBLE FOR THE BOARD LAYOUT AND FOR VERIFYING THAT THE BOARD LAYOUT WILL BE FUNCTIONAL AND RELIABLE IN THEIR APPLICATION. LINEAR TECHNOLOGY ACCEPTS NO LIABILITY FOR ANY DAMAGE TO PROPERTY OR PERSONS ARISING FROM THE USE OF THIS TECHNOLOGY APPLICATIONS INFORMATION.

THIS CIRCUIT IS PROPRIETARY TO LINEAR TECHNOLOGY AND IS SUPPLIED FOR USE WITH LINEAR TECHNOLOGY PARTS.



# DEMO MANUAL DC1477B

---

## DEMONSTRATION BOARD IMPORTANT NOTICE

Linear Technology Corporation (LTC) provides the enclosed product(s) under the following **AS IS** conditions:

This demonstration board (DEMO BOARD) kit being sold or provided by Linear Technology is intended for use for **ENGINEERING DEVELOPMENT OR EVALUATION PURPOSES ONLY** and is not provided by LTC for commercial use. As such, the DEMO BOARD herein may not be complete in terms of required design-, marketing-, and/or manufacturing-related protective considerations, including but not limited to product safety measures typically found in finished commercial goods. As a prototype, this product does not fall within the scope of the European Union directive on electromagnetic compatibility and therefore may or may not meet the technical requirements of the directive, or other regulations.

If this evaluation kit does not meet the specifications recited in the DEMO BOARD manual the kit may be returned within 30 days from the date of delivery for a full refund. **THE FOREGOING WARRANTY IS THE EXCLUSIVE WARRANTY MADE BY THE SELLER TO BUYER AND IS IN LIEU OF ALL OTHER WARRANTIES, EXPRESSED, IMPLIED, OR STATUTORY, INCLUDING ANY WARRANTY OF MERCHANTABILITY OR FITNESS FOR ANY PARTICULAR PURPOSE. EXCEPT TO THE EXTENT OF THIS INDEMNITY, NEITHER PARTY SHALL BE LIABLE TO THE OTHER FOR ANY INDIRECT, SPECIAL, INCIDENTAL, OR CONSEQUENTIAL DAMAGES.**

The user assumes all responsibility and liability for proper and safe handling of the goods. Further, the user releases LTC from all claims arising from the handling or use of the goods. Due to the open construction of the product, it is the user's responsibility to take any and all appropriate precautions with regard to electrostatic discharge. Also be aware that the products herein may not be regulatory compliant or agency certified (FCC, UL, CE, etc.).

No License is granted under any patent right or other intellectual property whatsoever. **LTC assumes no liability for applications assistance, customer product design, software performance, or infringement of patents or any other intellectual property rights of any kind.**

LTC currently services a variety of customers for products around the world, and therefore this transaction **is not exclusive**.

**Please read the DEMO BOARD manual prior to handling the product.** Persons handling this product must have electronics training and observe good laboratory practice standards. **Common sense is encouraged.**

This notice contains important safety information about temperatures and voltages. For further safety concerns, please contact a LTC application engineer.

Mailing Address:

Linear Technology  
1630 McCarthy Blvd.  
Milpitas, CA 95035

Copyright © 2004, Linear Technology Corporation