

# MTP/MPO Data Center Cable Solutions



With high-density connectors, multiple cable configurations and integrated specialty components, Molex MTP/MPO Data Center Solutions support the integration of high-performance networks while reducing the number of cables required and, thus, reducing overall system cost and maintenance

## Features and Benefits

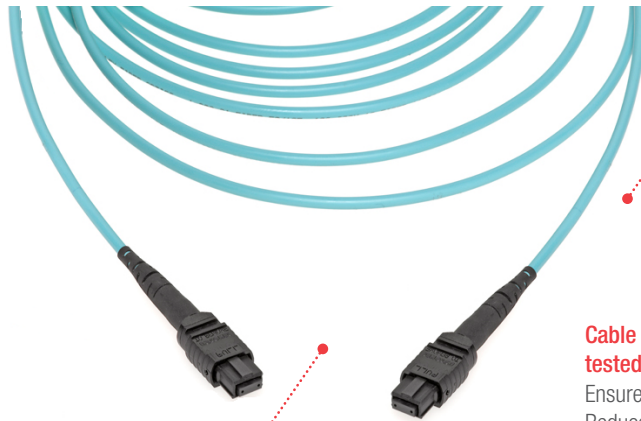
Cable Assemblies

### Low-loss options available

Meets tight system insertion-loss budgets

### Low-smoke, zero-halogen (LSZH)/Plenum/Riser rated

Fulfills flammability specifications for data center applications



### 12- and 24-fiber options available

Supports high-density data center applications. Reduces the number of cable assemblies required for system installation

### Cable assemblies 100% quality tested prior to shipping

Ensures high performance. Reduces customer cost and time associated with testing

### Industry-standard connector housing

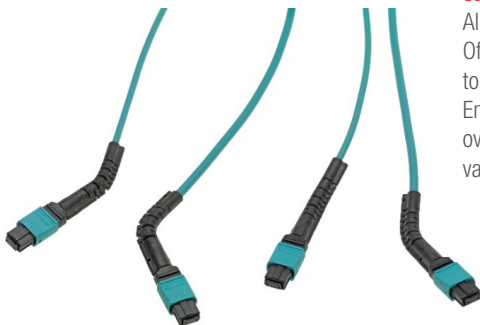
Simplifies implementation. Compatible with other pre-installed cables

## Features and Benefits

Adapters, accessories

### FlexiBend Boots available for additional fiber routing capabilities

Alleviate cable congestion. Offers bendable strain relief to secure any configuration. Ensures cable performance over multiple bends in various directions



### EMI gaskets included

Provide electromagnetic interference (EMI) seal between the adapter and mounting surface



## Features and Benefits

MTP/MPO Connector

### Precision-molded NTT-compatible ferrule

Connects 4 to 24 fibers using ribbon cable



### Push-pull connector housing

Provides quick and reliable connections

### Multiple ribbons stacked inside round jacket

Provides low-profile solution for high-density applications

### Shuttered die cast adapters

Shields and isolates EMI emissions



### Loopback adapters available

Enables testing and network diagnostics



### Ceramic or phosphor bronze alignment sleeves (where applicable)

Accommodate single-mode (SM) and multi-mode (MM) performance

### Multi-port EMI adapter options

Ease space constraints on panel and increase ports within an envelope

# MTP/MPO Data Center Cable Solutions



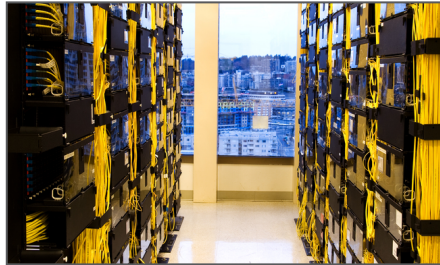
## Applications

### Telecommunications/Networking

- Optical electrical modules
- Optical switches and routers
- PC cards and patch panels

### Data Centers

- Servers



Data Center Servers

## Specifications

### REFERENCE INFORMATION

Packaging: Individually bagged  
Mates With: Molex MPO Adapters/QSFP Transceivers  
Use With: Molex MPO Adapters/QSFP Transceivers  
Designed In: Meters  
RoHS: Yes  
Halogen Free: TBD

### FIBER:

Multimode:  
- 50/125  $\mu$ m OM3 Bend-Insensitive  
- 50/125  $\mu$ m OM4 Bend-Insensitive  
Single Mode:  
- OS2 ITU-T G.657.A1 Bend-Insensitive

### CONNECTOR:

Connector Type:  
- MPO Female, Aqua for Multi-mode  
- MPO Female, Green for Single-mode

### MECHANICAL

Fiber Count: 12 and 24 Fiber Options  
Cable Diameter: 12F = 4.5/3.0mm  
24F = 5.4/3.8mm  
Tensile Load: 12F = 660 N  
24F = 660 N  
Min Bend Radius: 12F = 68mm  
24F = 89mm  
24F and Low-Loss Options: 20N MTP Spring

## Ordering Information

Series No.	Component
<a href="#">106005</a>	Loopback, Singlemode and Multimode
<a href="#">106225</a>	MPO Data Center Trunk Cable Assemblies
<a href="#">106114</a>	Simplex EMI Adapter
<a href="#">106181</a>	MTP Quad Adapter Assembly
<a href="#">106283</a>	QSFP+ optical Jumper Cable Assembly

[www.molex.com/link/mpodatacentersolutions.html](http://www.molex.com/link/mpodatacentersolutions.html)

Molex is a registered trademark of Molex, LLC in the United States of America and may be registered in other countries; all other trademarks listed herein belong to their respective owners.