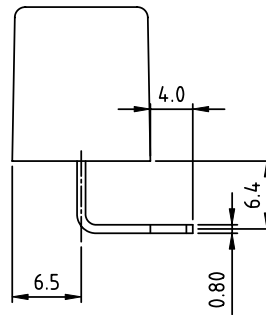
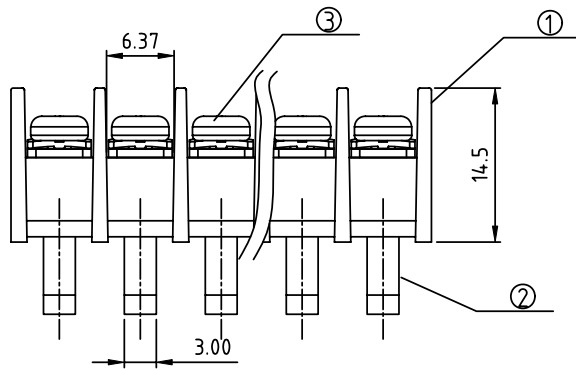
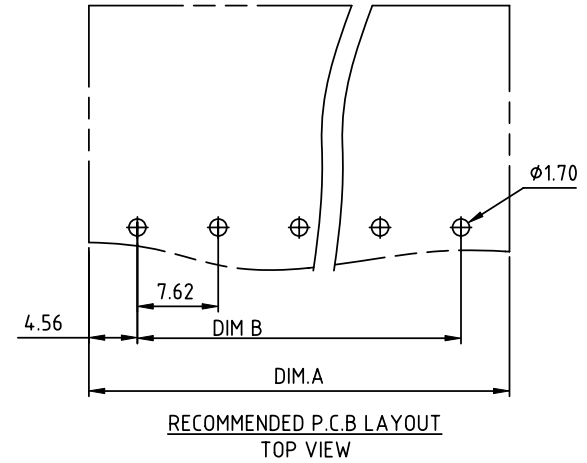
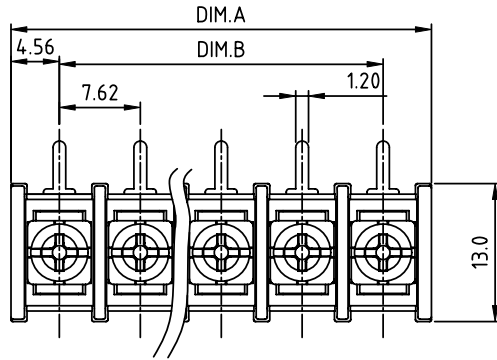


PRODUCT NUMBER	PITCH
YK314xx0x0JOG	7.62 mm



MATERIALS & ELECTRICAL
 RATED VOLTAGE & CURRENT: 250 V, 15 A
 WITHSTAND VOLTAGE: AC 2000 V/Min
 INSULATION RESISTANCE: 1000 M Ω OR MORE AT DC 500 V
 OPERATING TEMPERATURE RANG: -40 $^{\circ}$ C ~ +115 $^{\circ}$ C
 SCREW TORQUE VALUE: 5.3 Lb-In.
 WIRE RANGE: 22 - 16 AWG
 1) HOUSING: THERMOPLASTIC, UL 94 V-0 BLACK
 2) TERMINAL: BRASS, 0.8t
 3) TERMINAL SCREWS: STEEL, M3
 APPROVAL:

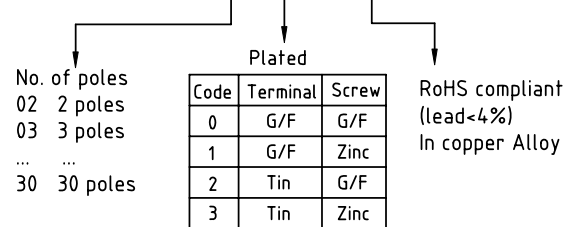
DIMENSION

Dim A	(N-1) \times 7.62+9.12
Dim B	(N-1) \times 7.62

N=Number of poles

Poles	Tolerance
2p-5p	± 0.20
6p-10p	± 0.25
11p-16p	± 0.35
17p-24p	± 0.40
25p-30p	± 0.50

PART NO.: YK 314xx 0 x 0 JOG



mat'l. code		surface ASME Y14.5	tolerance ASME Y14.5	projection 	product family TERMINAL BLOCK
ltr	ecn no	dr	date	tolerances unless otherwise specified	title TERMINAL BLOCK
				angles 	BARRIER TYPE
				X $\pm 1^{\circ}$	scale
				dr EVAN LU 061214	dwg no
				enr EVAN LU 061214	YK314xx0x0JOG
				chr HANKE FENG 061214	sheet 1 of 1
				appd SHI JUN 061214	size A4
sheet index	revision	A			type CUSTOMER Drawing
	sheet	1			