

### Hybrid Couplers 3 dB, 90°

#### Applications

- Balanced Mixers
- Antenna Feed Networks
- Phasing Networks
- Dividers/Combiners

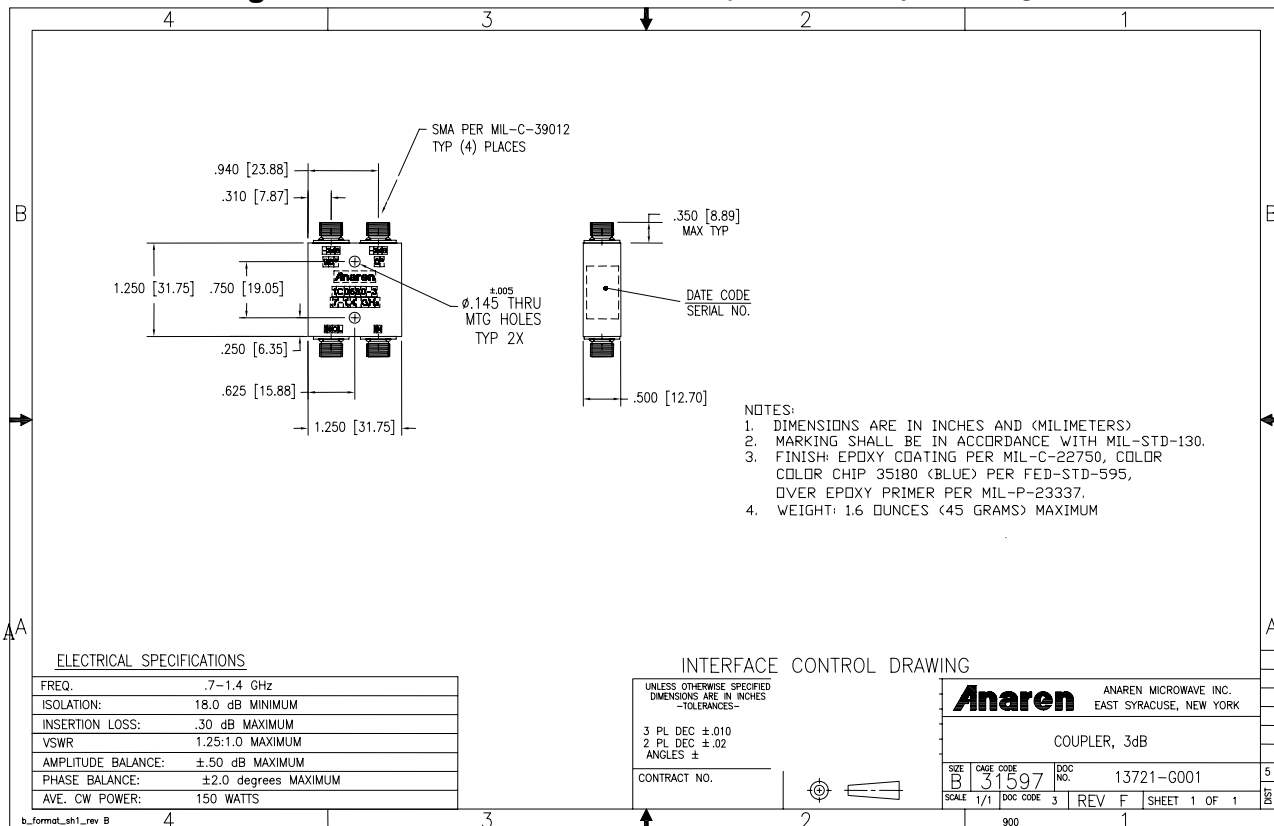
#### Features

- Military Grade
- 0.7 – 1.4 GHz
- 2-Way power Split
- Quadrature
- Connectors Per MIL-C-39012
- Rugged Aluminum Housing
- Low VSWR
- Meets MIL-E-5400 Class 3 Requirements



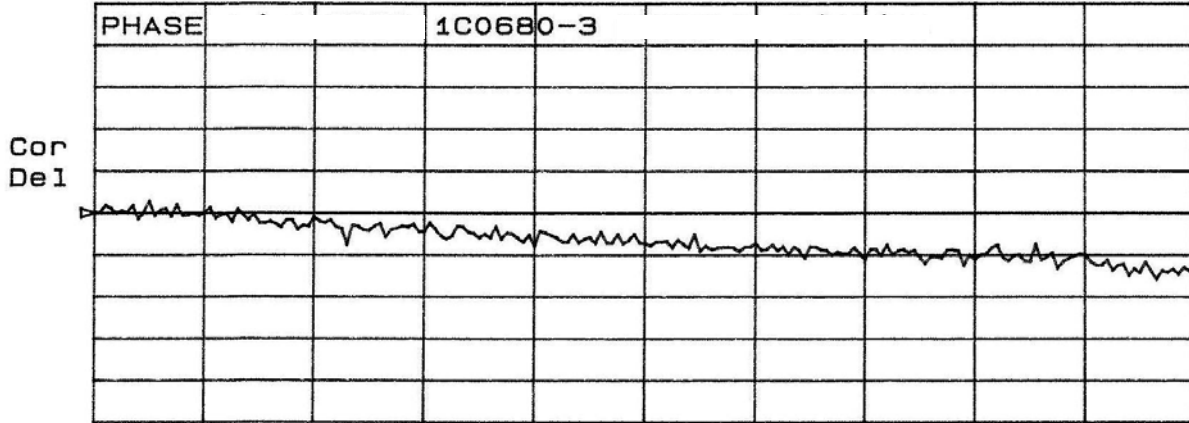
#### Outline Drawing

Electrical and Mechanical Specifications subject to change without notice.

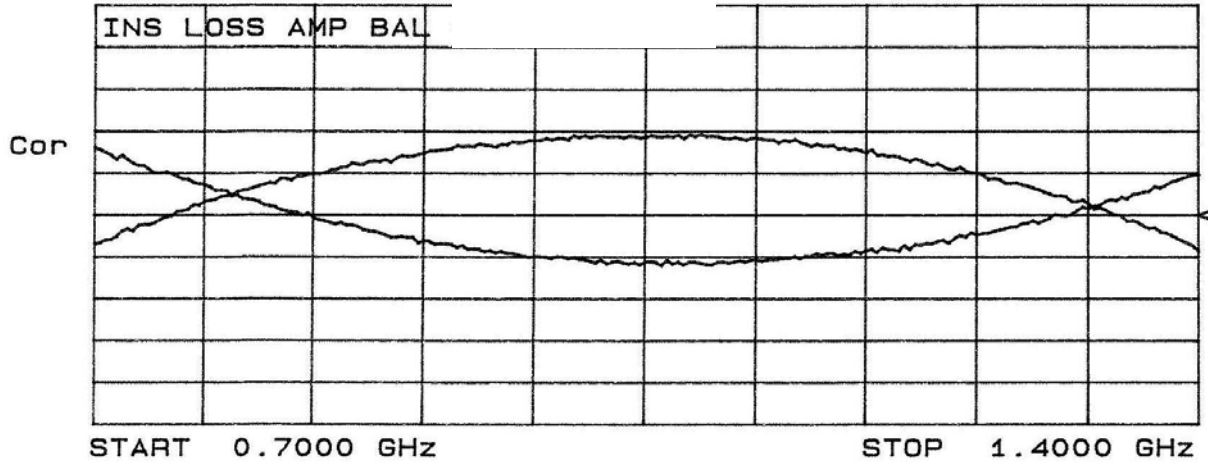


**Typical Test Data Plots**

CH1 S<sub>21</sub>/M phase 500 m°/ REF 0 °



CH2 S<sub>21</sub>&M log MAG 0.25 dB/ REF -3.25 dB



### Typical Test Data Plots

