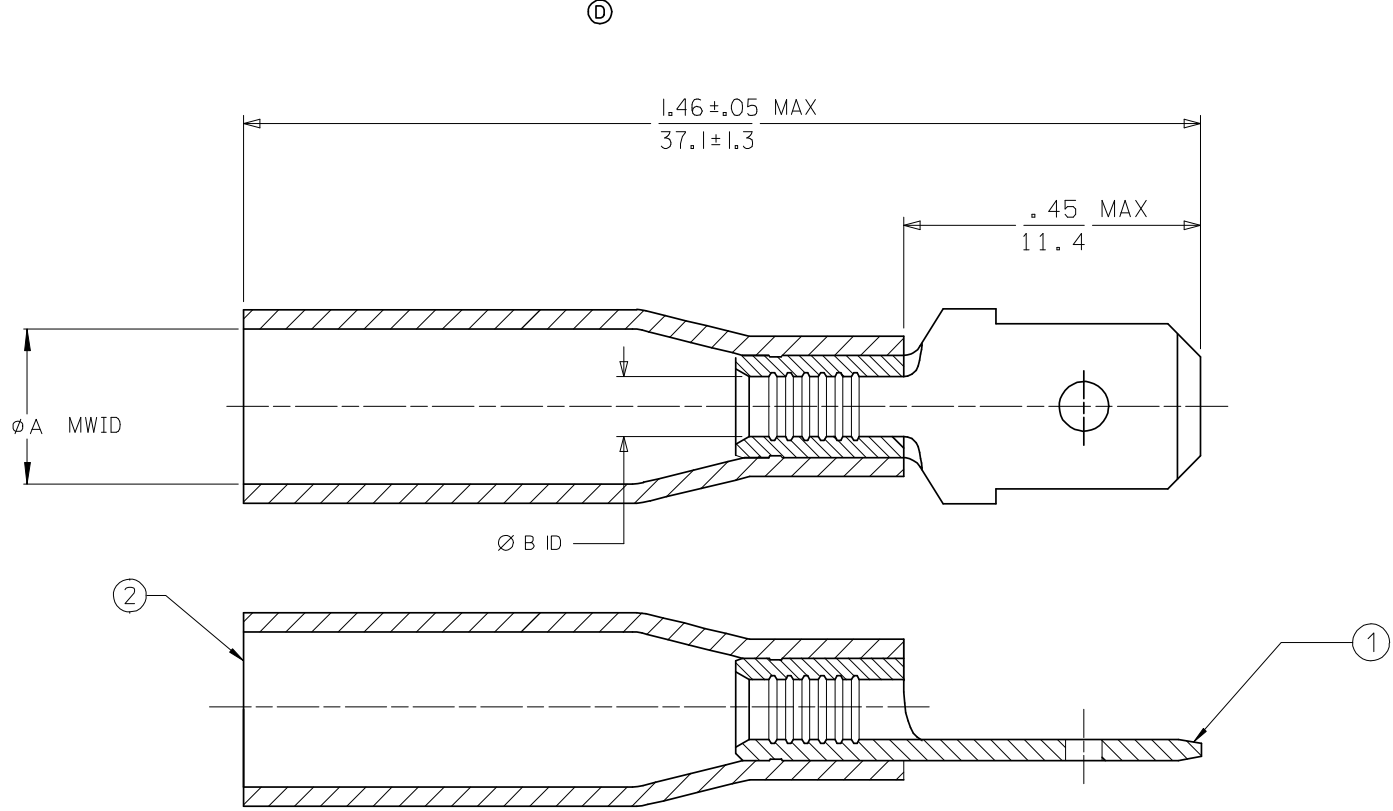


MATERIAL NO.	ENGINEERING NO.	φA MWID	φB ID	TERMINAL MATERIAL	TERMINAL FINISH
191640019	SAMCT-2	.185/4.70 (D)	.054/1.37 (D)	BRASS, .031/0.79 THK REF	ZINC CHROMATE
191640084	SMCT-2	.195/4.95 (D)	.082/2.08 (D)	BRASS, .031/0.79 THK REF	ZINC CHROMATE
191640078	SCMCT-2	.275/6.99 (D)	.144/3.65 (D)	BRASS, .031/0.79 THK REF	ZINC CHROMATE



NOTES:

1. TAB DIMENSIONS PER UL310 SPECIFICATIONS.
2. TAB MATERIAL: SEE CHART
FINISH: SEE CHART
3. INSULATION MATERIAL: HEAT SHRINKABLE TUBING WITH HOTMELT ADHESIVE INNER LINER,
4. MWID = MAXIMUM WIRE INSULATION DIAMETER.
5. PART IS ROHS COMPLAINT.

SALES DRAWING

CHANGED MATL & FINISH E.C. NO: ETC2007-0081 DRAWN: EHILE 2008/01/28 CHKD: MACNEIL 2008/01/28 APPR: MACNEIL 2008/02/13	DESCRIPTION REV	QUALITY SYMBOLS ▽=0 ▽=0	GENERAL TOLERANCES (UNLESS SPECIFIED)	DIMENSION STYLE IN/MM	SCALE ---	DESIGN UNITS INCH	THIRD ANGLE PROJECTION	
		4 PLACES ± --- ± ---	DRAWN BY JLOMASTRO	DATE 05/10/13	TITLE PERMA-SEAL QD MALE TERMINAL LONG BARREL			
		3 PLACES ± --- ± .005	CHECKED BY RDEROSS	DATE 05/10/13	MATERIAL NO. SEE CHART			
		2 PLACES ± 0.13 ± .010	APPROVED BY RDEROSS	DATE 05/10/13	DOCUMENT NO. SD-19164-049			
1 PLACE ± 0.25 ± ---			DRAFT WHERE APPLICABLE MUST REMAIN WITHIN DIMENSIONS		SHEET NO. 1 OF 1		THIS DRAWING CONTAINS INFORMATION THAT IS PROPRIETARY TO MOLEX INCORPORATED AND SHOULD NOT BE USED WITHOUT WRITTEN PERMISSION	