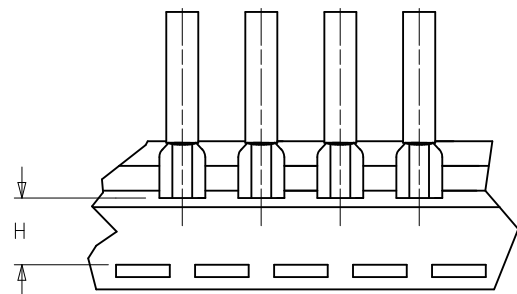
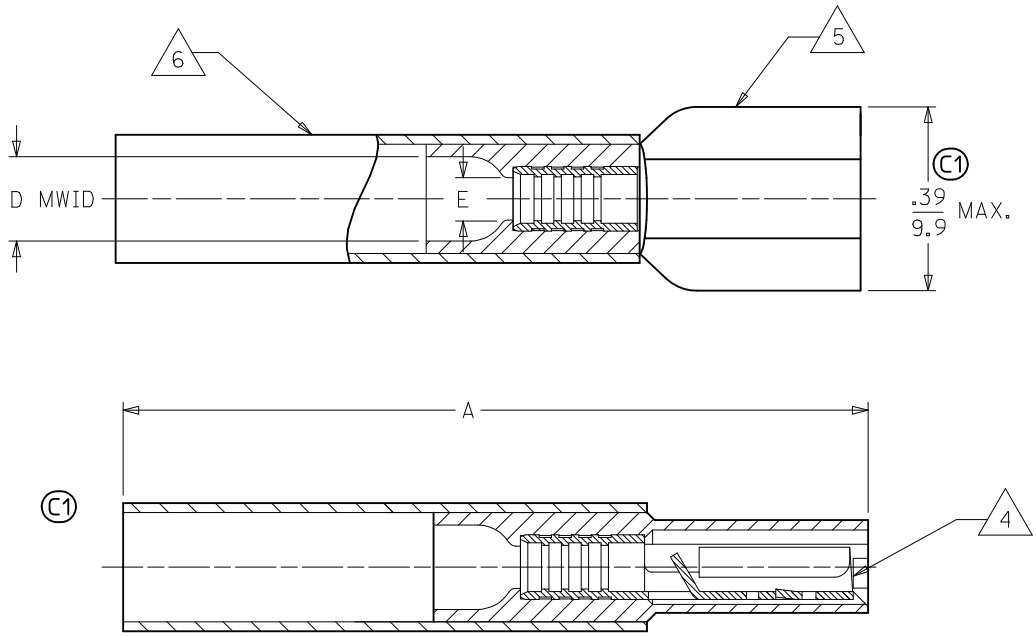


MATERIAL NUMBER	ENGINEERING NUMBER	TAPE MATERIAL NUMBER	TAPE ENGINEERING NUMBER	WIRE SIZE AWG	WIRE SIZE MM SQ.	FITS MALE TAB	PERMA-SEAL COLOR	Ⓢ A MAX.	Ⓢ D MWID	E Ⓢ MIN	H NOMINAL
191640017	SAA-9261	191640018	SAA-9261T	22-18	.25-1.5	.250 X .032	RED	1.50/38.1	.17/4.3	.081/2.05	.55/14.0
191640050	SBB-9263	191640051	SBB-9263T	16-14	1.0-2.5	.250 X .032	BLUE	1.50/38.1	.18/4.5	.081/2.05	.55/14.0
191640076	SC-9281	191640305	SC-9281T	12-10	4.0-6.0	.250 X .032	YELLOW	1.52/38.6	.23/5.8	.140/3.56	.56/14.2



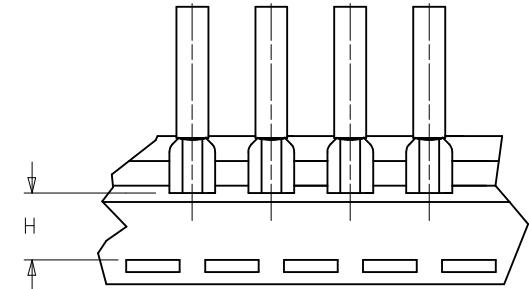
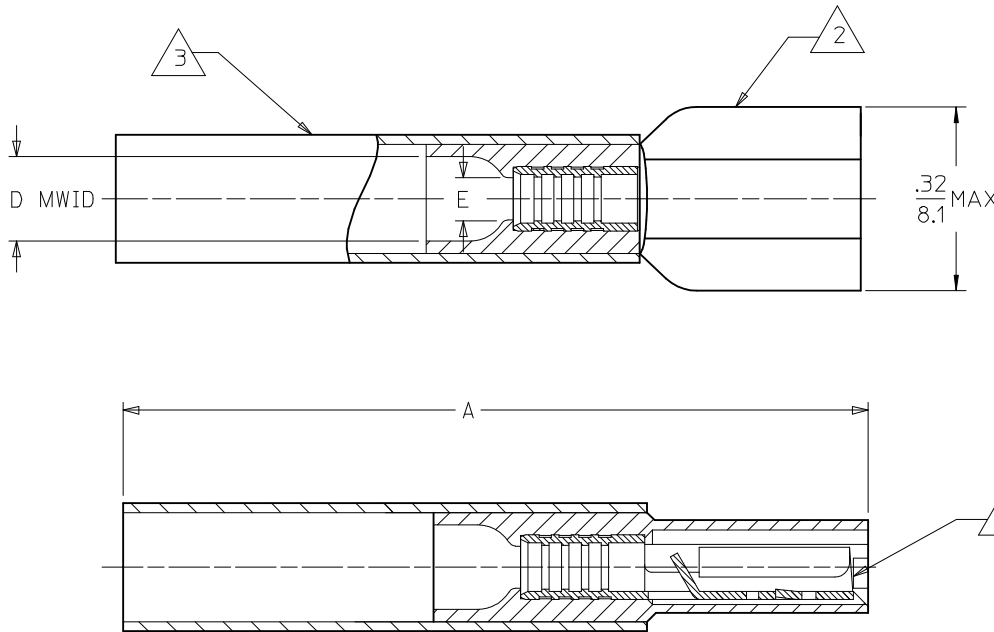
TAPE MOUNTING DETAIL

NOTES:

- Ⓢ 1. FEMALE RECEPTACLE CONFORMS TO UL310.
- 2. ALL DIMENSIONS SHOWN ARE BEFORE SHRINK TUBING IS HEATED.
- 3. "MWID" DENOTES MAX. WIRE INSULATION DIA.
- 4. TAB MATERIAL: .018 THK, BRASS, PLATING, TIN.
- 5. INSULATION MAT'L: MOLDED NYLON
- Ⓢ 6. NYLON TUBING WITH HOTMELT INNER LINER. SEE CHART FOR COLOR.
- Ⓢ 7. ALL PARTS ARE ROHS COMPLIANT.

CORRECT SPECS EC NO: WNA2010-0115 DRW: WETHRODAHL 2010/02/16 CHKD: JMACNEIL 2010/02/18 APPR: JMACNEIL 2010/02/22	QUALITY SYMBOLS ▽=0 ▽=0	GENERAL TOLERANCES (UNLESS SPECIFIED)		DIMENSION STYLE		SCALE	DESIGN UNITS	THIRD ANGLE PROJECTION			
				IN/MM		---	INCH				
				mm	INCH	DRAWN BY	DATE	TITLE			
				4 PLACES ±---	±---	BRE	2002/10/29	PERMA-SEAL COUPLER FEMALE RECEPTACLE			
		3 PLACES ±---	±---	CHECKED BY	DATE	MATERIAL NO. SEE CHART					
		2 PLACES ±---	±---	HEB	2002/10/29					DOCUMENT NO. SD-19164-020	
		1 PLACE ±---	±---	APPROVED BY	DATE	SHEET NO. 1 OF 1					
		ANGULAR ±---		RWD	2002/10/29					THIS DRAWING CONTAINS INFORMATION THAT IS PROPRIETARY TO MOLEX INCORPORATED AND SHOULD NOT BE USED WITHOUT WRITTEN PERMISSION	
		DRAFT WHERE APPLICABLE MUST REMAIN WITHIN DIMENSIONS		MATERIAL NO. SEE CHART							

10	9	8	7	6	5	4	3	2			
MATERIAL NUMBER	ENGINEERING NUMBER	TAPE MATERIAL NUMBER	TAPE ENGINEERING NUMBER	WIRE SIZE AWG	WIRE SIZE MM SQ.	FITS MALE TAB	PERMA-SEAL COLOR	A MAX.	D MWTD	E MTN	H ±.02/0.5
191641135	SBB-2207	191641136	SBB-2207T	16-14	1.0-2.5	.187 X .020	BLUE	1.30/33.0	.160/4.06	.079/2.00	.64/16.26



TAPE MOUNTING DETAIL

NOTES:

- 1. TERMINAL MATERIAL: BRASS.
TERMINAL FINISH: TIN PLATED.
- 2. TERMINAL HOUSING MATERIAL: NYLON.
- 3. INSULATION MATERIAL: HEAT SHRINKABLE TUBING WITH HOTMELT ADHESIVE INNER LINER.
COLOR: SEE CHART
- 4. MWID = MAXIMUM WIRE INSULATION DIA.
- 5. PARTS ARE ROHS COMPLAINT.

RELEASED EC NO: IFC2014-1630 DRAWING: GROSAS01 2014/06/09 CHKD: JMACNEIL 2014/06/09 APPR: JMACNEIL 2014/11/03 REV A	QUALITY SYMBOLS	GENERAL TOLERANCES (UNLESS SPECIFIED)	DIMENSION STYLE	SCALE	DESIGN UNITS	THIRD ANGLE PROJECTION	
	▼=0 ▽=0	mm INCH 4 PLACES ± --- ± --- 3 PLACES ± --- ± --- 2 PLACES ± --- ± --- 1 PLACE ± --- ± --- 0 PLACE ± ±	IN/MM	---	INCH	DRAWN BY DATE BRE 2002/10/29 CHECKED BY DATE HEB 2002/10/29 APPROVED BY DATE 2014/11/03	TITLE FEMALE FIQD .187X.020 16-14 AWG PERMA-SEAL
	ANGULAR ± --- ° DRAFT WHERE APPLICABLE MUST REMAIN WITHIN DIMENSIONS	MATERIAL NO.	DOCUMENT NO.	SHEET NO.			
	SEE CHART	SD-19164-077	1 OF 1	THIS DRAWING CONTAINS INFORMATION THAT IS PROPRIETARY TO MOLEX INCORPORATED AND SHOULD NOT BE USED WITHOUT WRITTEN PERMISSION			