

ATLANTIC VERSION TERMINATOR INTERFACE ADAPTER. PART NUMBER, REVISION, DESCRIPTION, FEED TYPE, CONVERT TO, PART NUMBERS REQUIRED. Includes a diagram of the device.

REVISIONS table with columns: REV, LTR, DESCRIPTION, DATE, DWN, APVD.

APPLICATOR DATA table with columns: CRIMP, SIZE, TYPE. Includes WIRE and INSUL dimensions.

TERMINAL DATA: TE TERMINAL TE CRIMP SPECIFICATION. Includes WIRE STRIP LENGTH and INSULATION DIAMETER RANGE.

TERMINAL APPLICATION SPECIFICATION table with columns: TERMINAL, APPLICATION.

TERMINALS APPLIED table with columns: TE TERMINAL, TE SEAL, SEAL PN, INSULATION RANGE.

WIRE SIZE, CRIMP HEIGHT, CRIMP HEIGHT REFERENCE SETTING table.

- RECOMMENDED SPARE PARTS
GREASE BEARING SURFACES LIGHTLY
3. LUBRICATE DAILY PER THE APPLICATOR INSTRUCTION SHEET SUPPLIED WITH THE APPLICATOR.
APPLICATOR SPECIFIC DATA TO BE ENTERED INTO BLANK MEMORY CHIP AT ASSEMBLY...

- APPLY TORQ-SEAL IN ALLEN SOCKET TO FILL HOLE AFTER FLAT HD HAS BEEN ADJUSTED TO CORRECT HEIGHT AT QUALIFICATION...
THIS APPLICATOR IS EQUIPPED WITH THE DOUBLE ACTING PNEUMATIC FEED WITH SENORS...
TERMINAL LUBRICANT IS RECOMMENDED.

*WARNING
ON INSTALLATION, SET WIRE DISC, ITEM 40 TO LARGEST WIRE SIZE SETTING. USE OF SETTINGS BELOW MINIMUM REQUIRED CRIMP HEIGHT SETTING WILL CAUSE DAMAGE TO CRIMP TOOLING.

Parts list table with columns: PART NO, DESCRIPTION, ITEM NO.

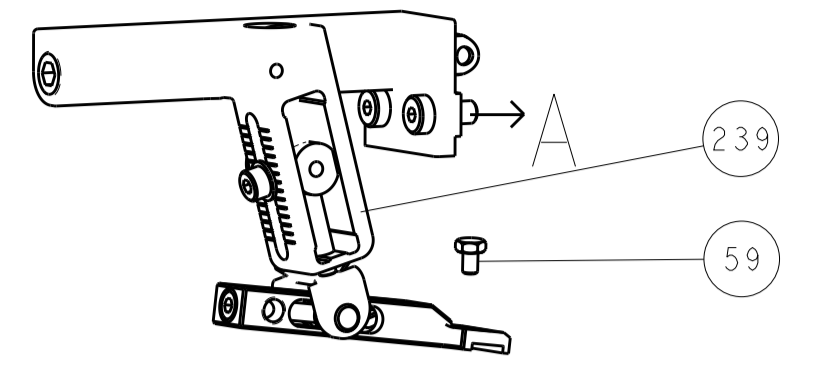
ATLANTIC VERSION
Shown on sheets 1 of 4 & 2 of 4
(Pacific version shown on sheets 3 of 4 & 4 of 4)

Main parts list table with columns: REV, LTR, DESCRIPTION, DATE, DWN, APVD. Includes various components like AIR FEED MODULE, TAG IDENTIFICATION, SPACER, FEEDER, etc.

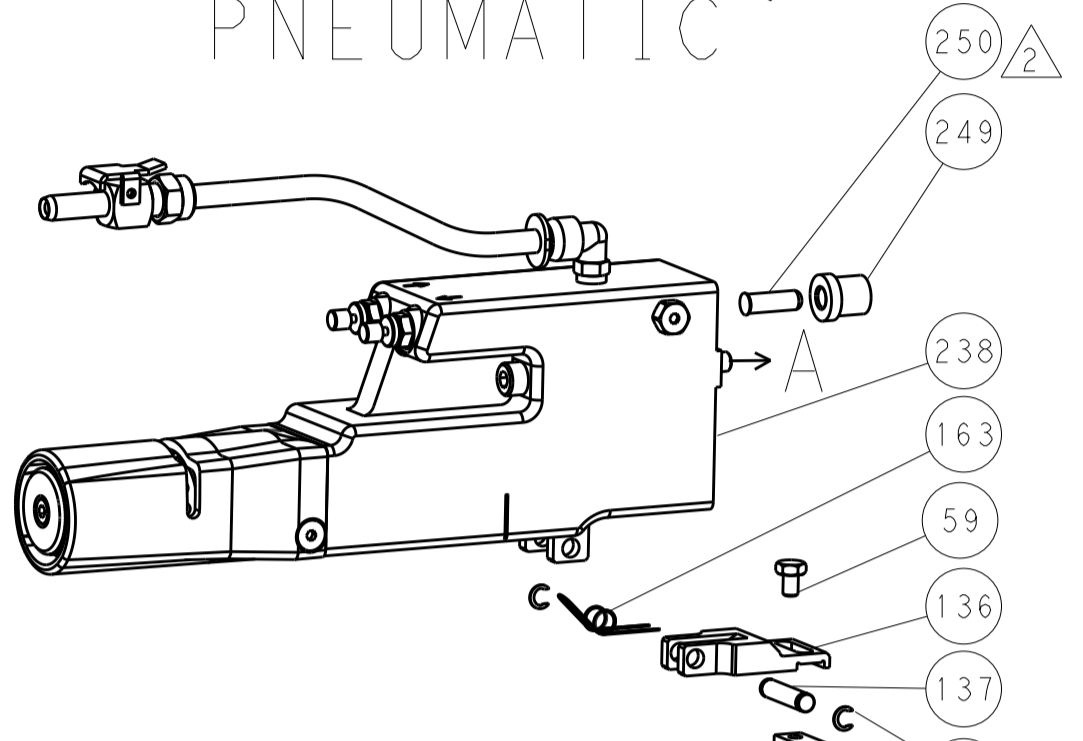
Customer Accessible Production Drawing. Includes dimensions, tolerances, material, finish, weight, and drawing information.

LOC		DIST		REVISIONS			
A	66	P	LTM	DESCRIPTION	DATE	DWN	APVD
		-	-	SEE SHEET 1	-	-	-

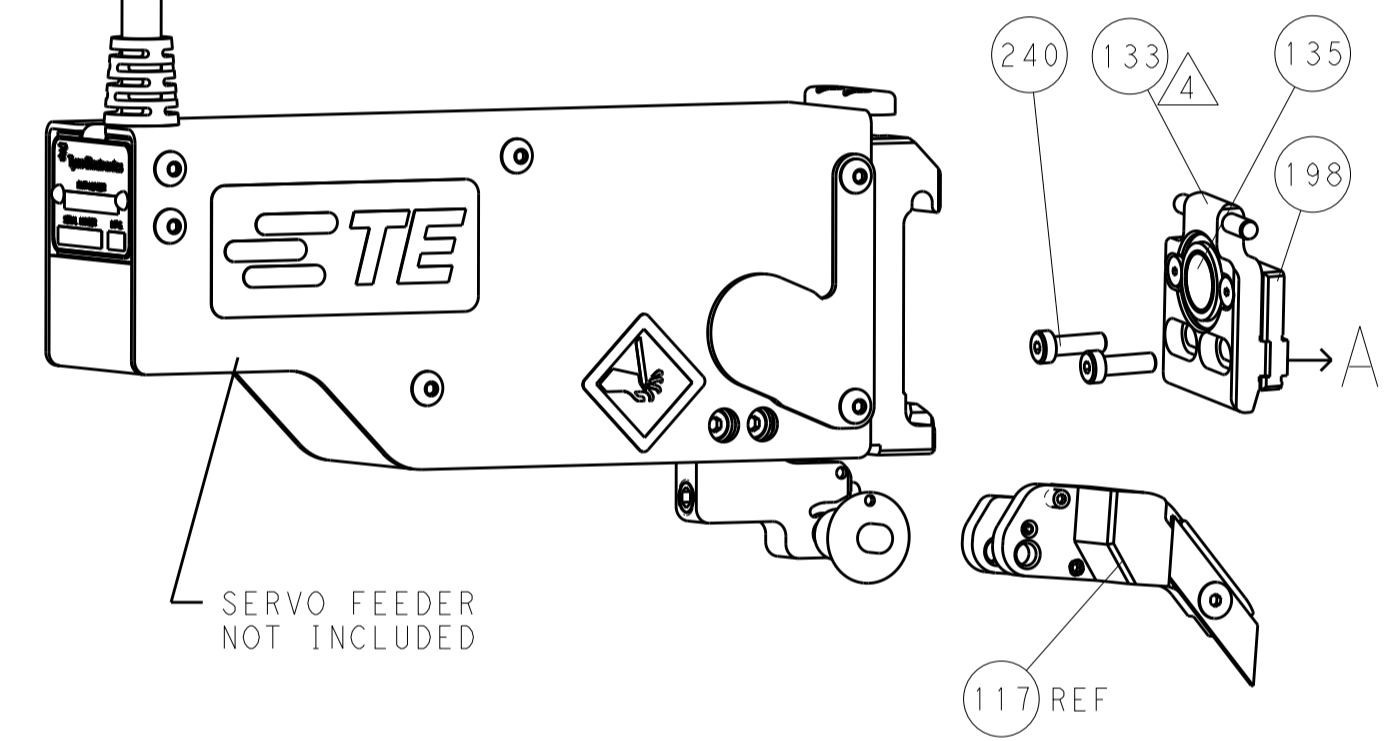
FEED TYPE MECHANICAL



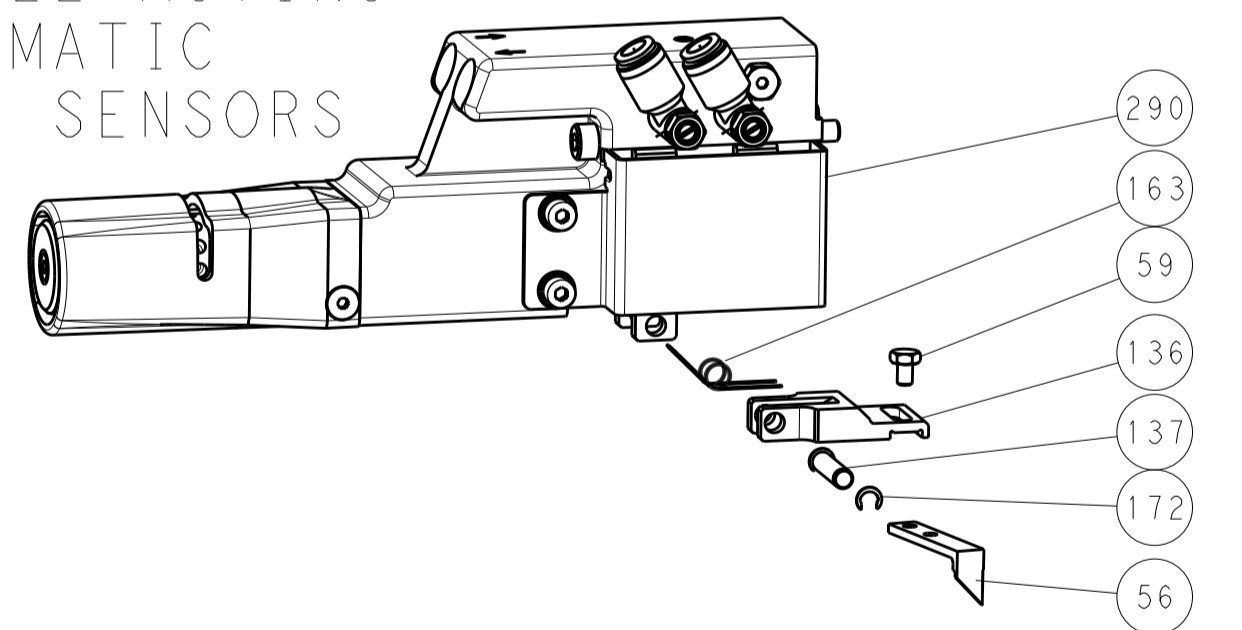
PNEUMATIC



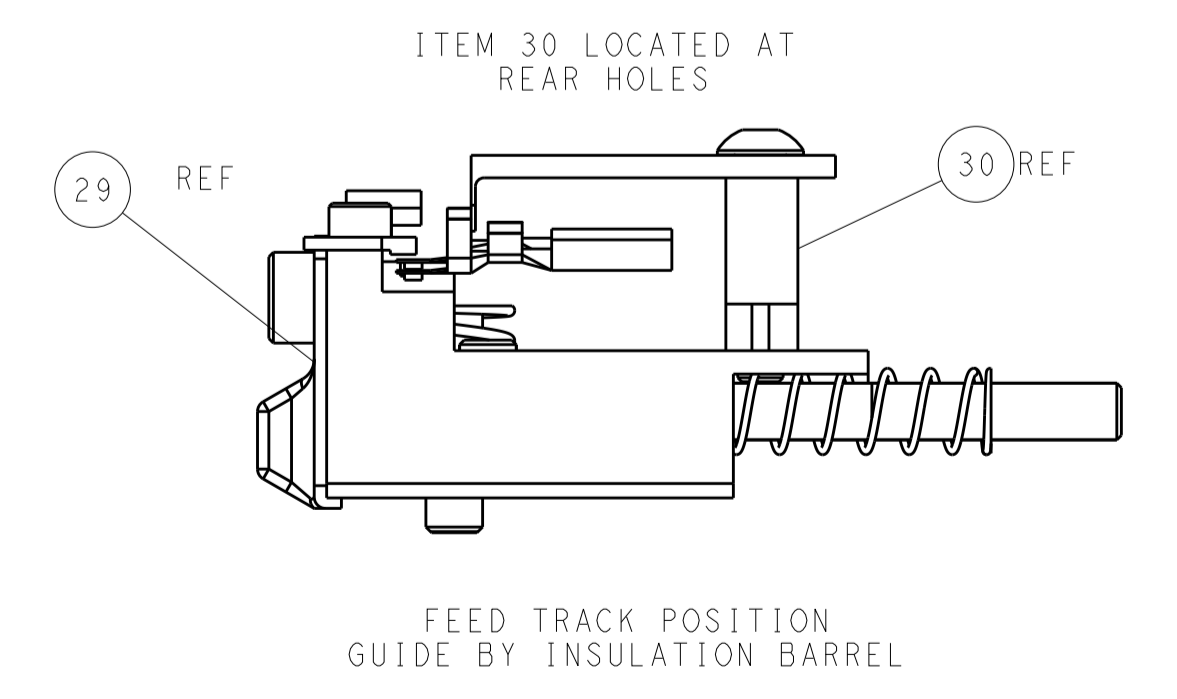
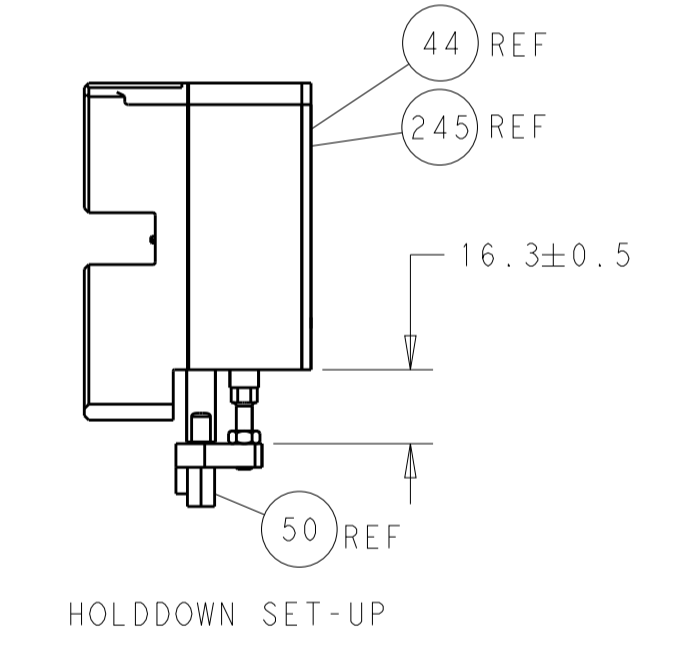
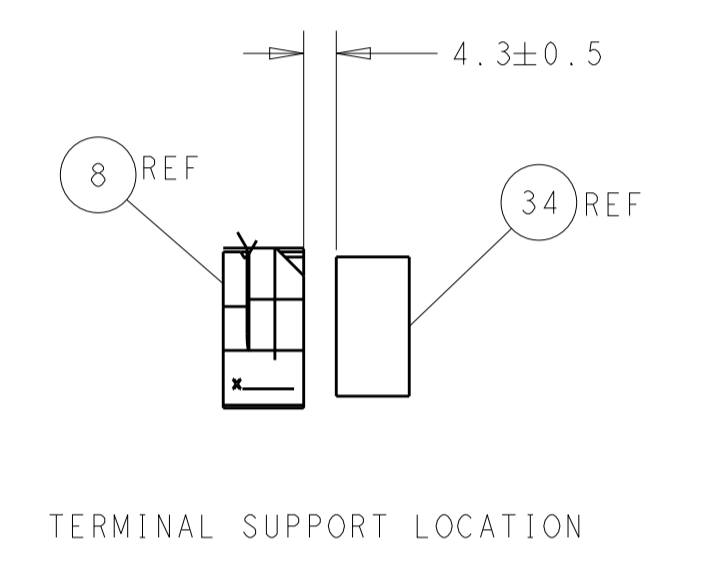
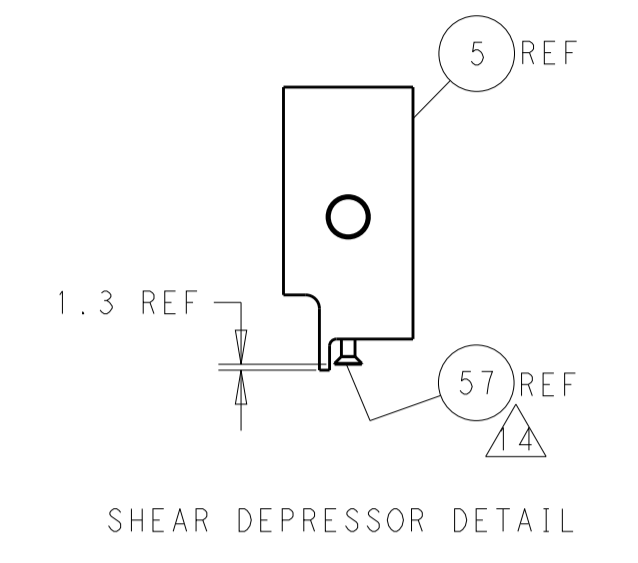
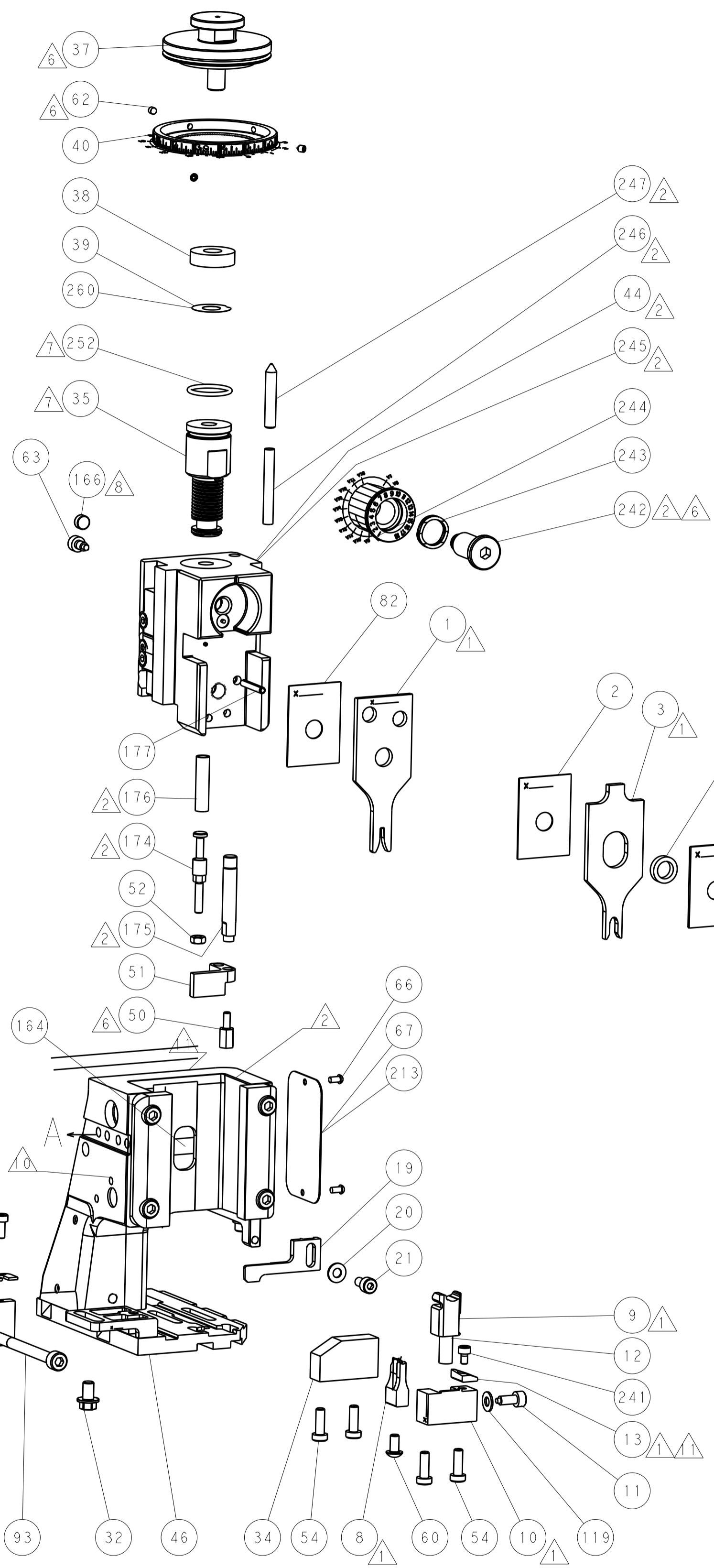
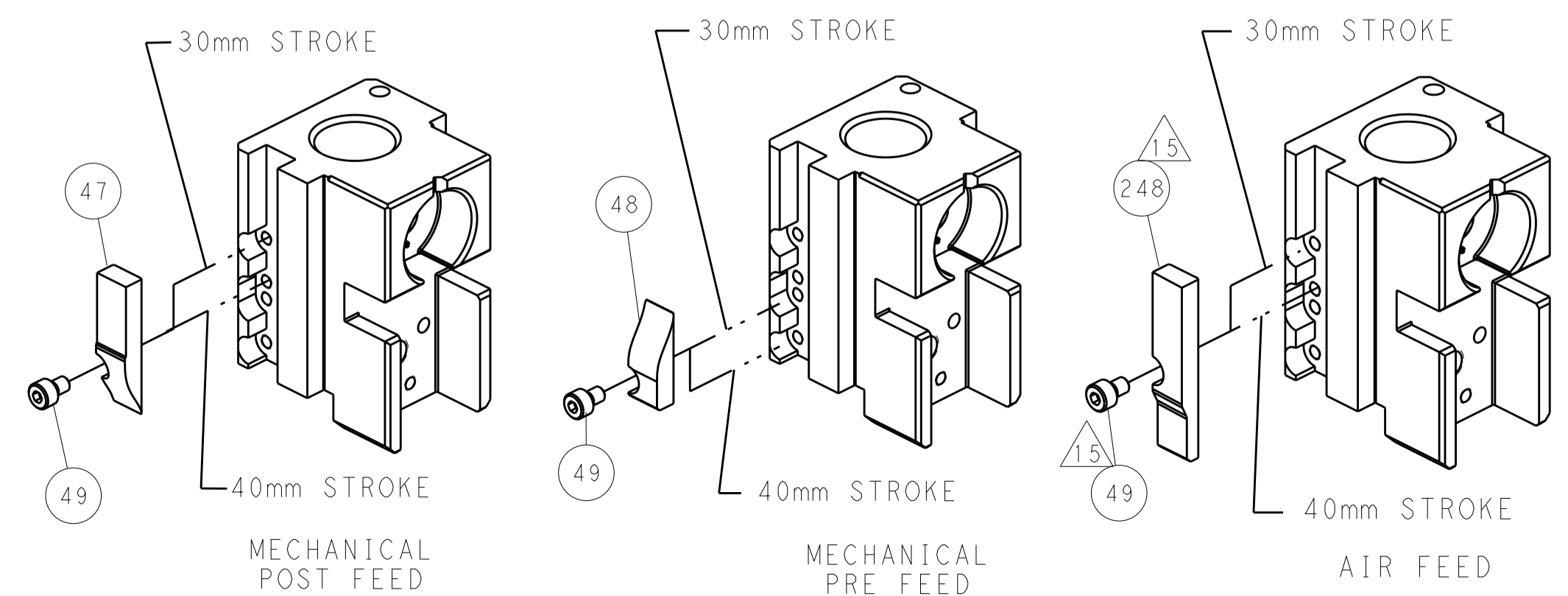
SERVO LATCH PLATE



DOUBLE ACTING PNEUMATIC WITH SENSORS



CAM POSITIONS

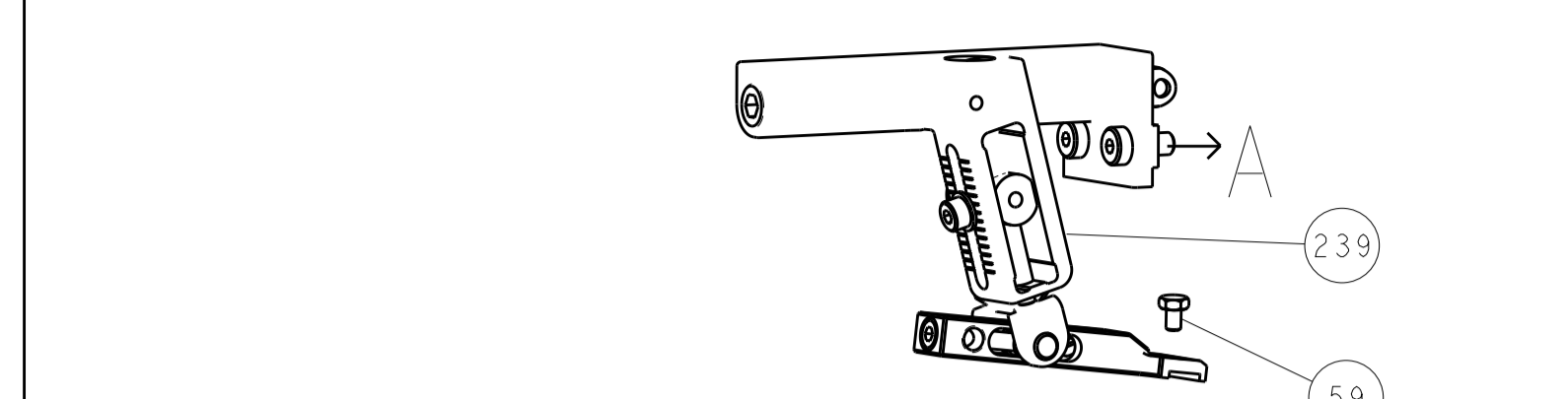


ATLANTIC VERSION
 Shown on sheets 1 of 4 & 2 of 4
 (Pacific version shown on sheets 3 of 4 & 4 of 4)

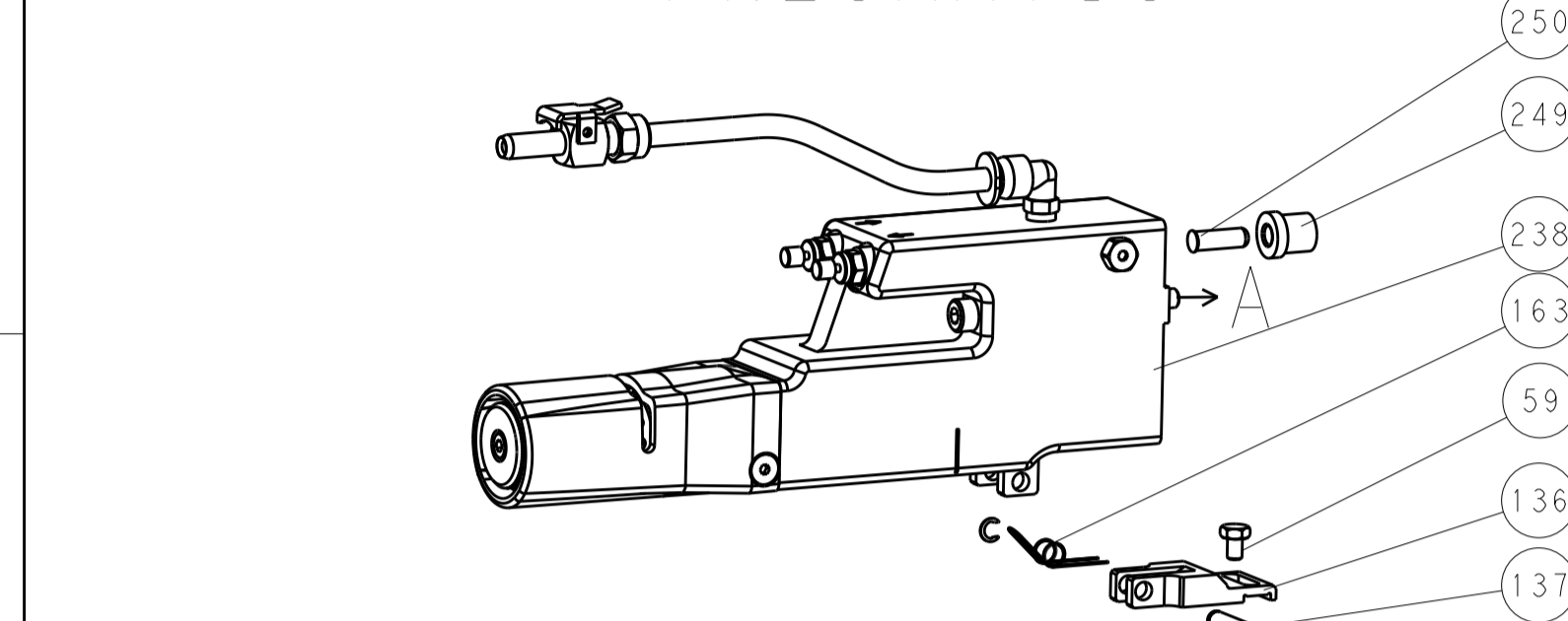
DIMENSIONS:		TOLERANCES UNLESS OTHERWISE SPECIFIED:		DWN: Y. YIN 25APR2011		TE Connectivity	
mm	0 PLC ±	1 PLC ±	2 PLC ±	3 PLC ±	4 PLC ±	Harrisburg, PA 17105-3608	
MATERIAL:		FINISH:		CHK: G. BAILEY 25APR2011		NAME: Ocean Side Feed Applicator	
				APVD: S. XI 25APR2011		SIZE: CAGE CODE: DRAWING NO: A1 00779 ©=2151064	
				WEIGHT:		RESTRICTED TO: Customer Accessible Production Drawing	
				SCALE: 1:2		SHEET 2 OF 4 REV H	

LOC	DIST	REV	DATE	BY	APPV
A	66				

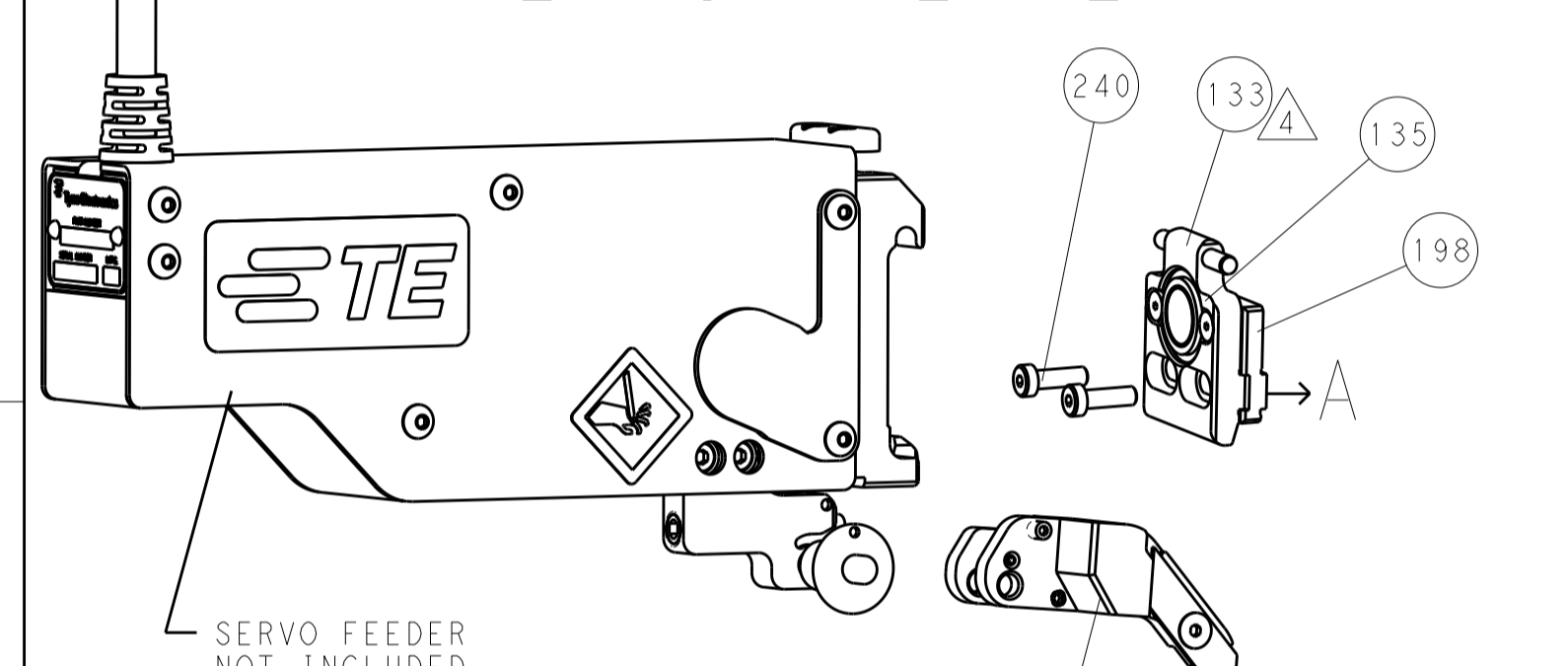
FEED TYPE MECHANICAL



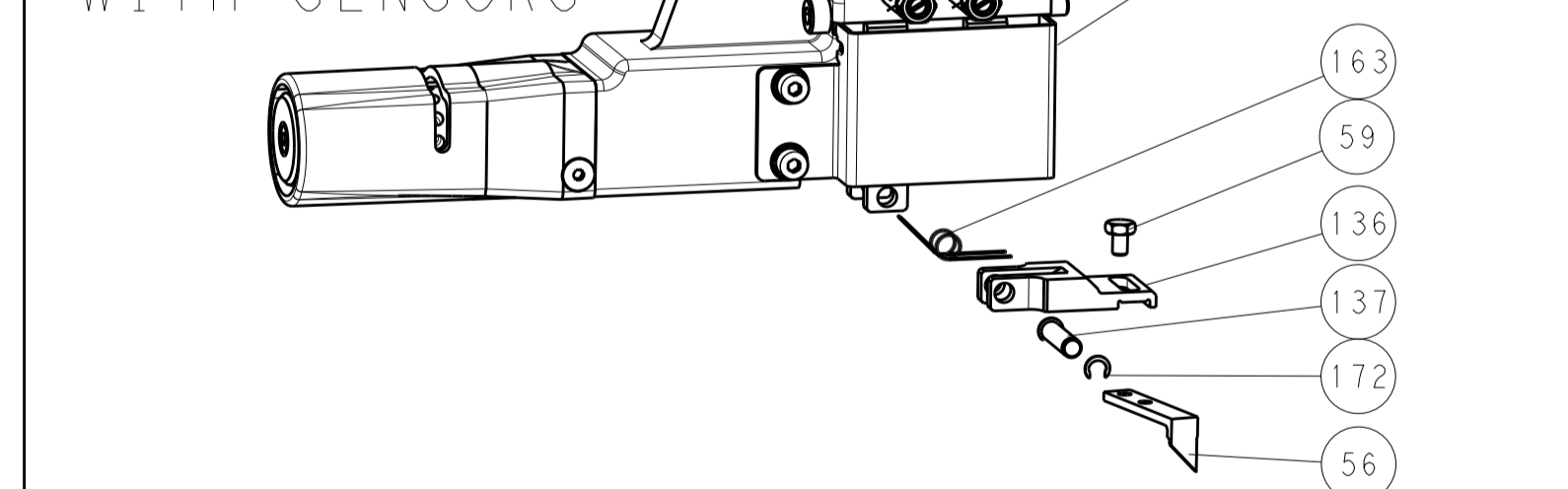
PNEUMATIC



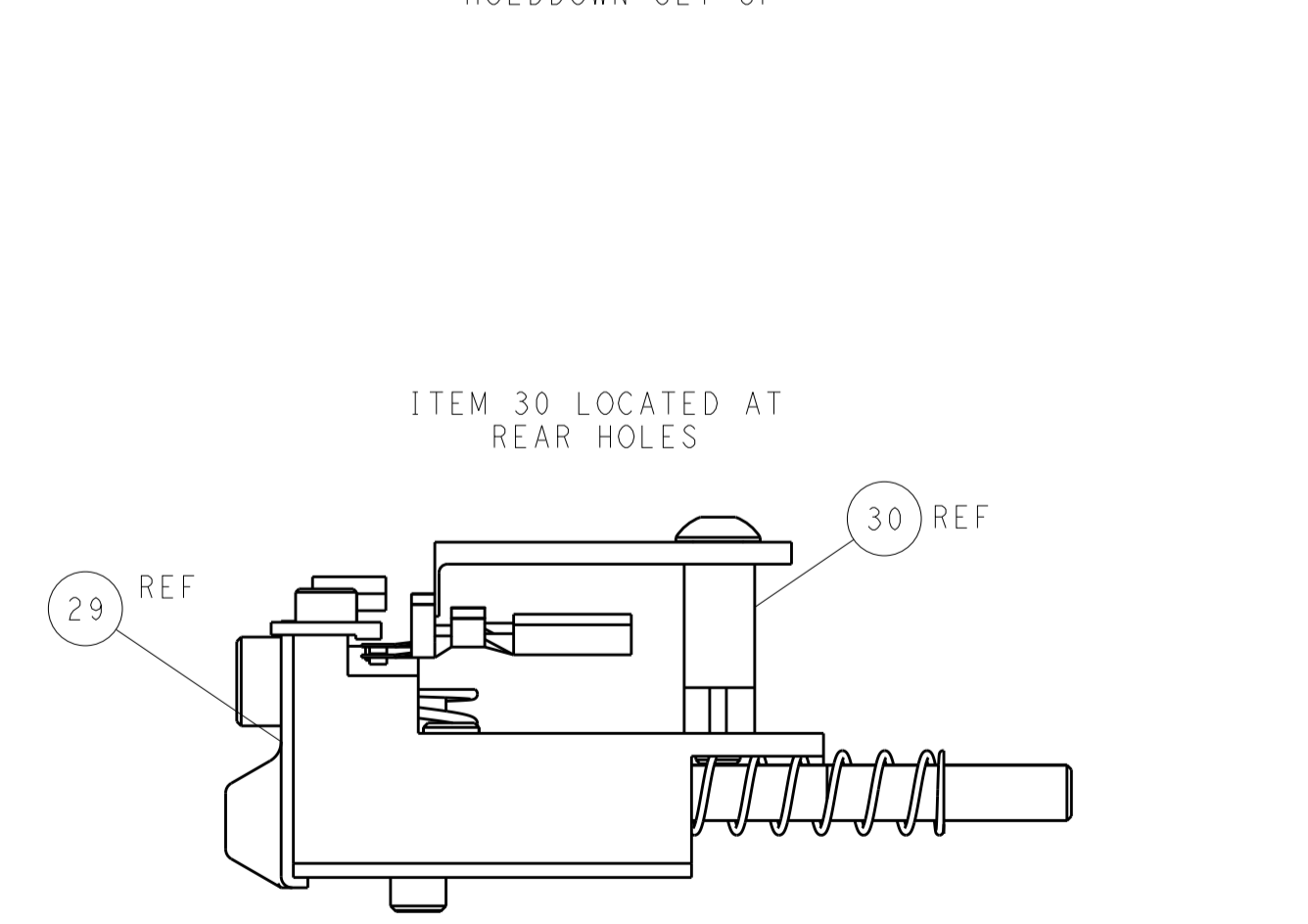
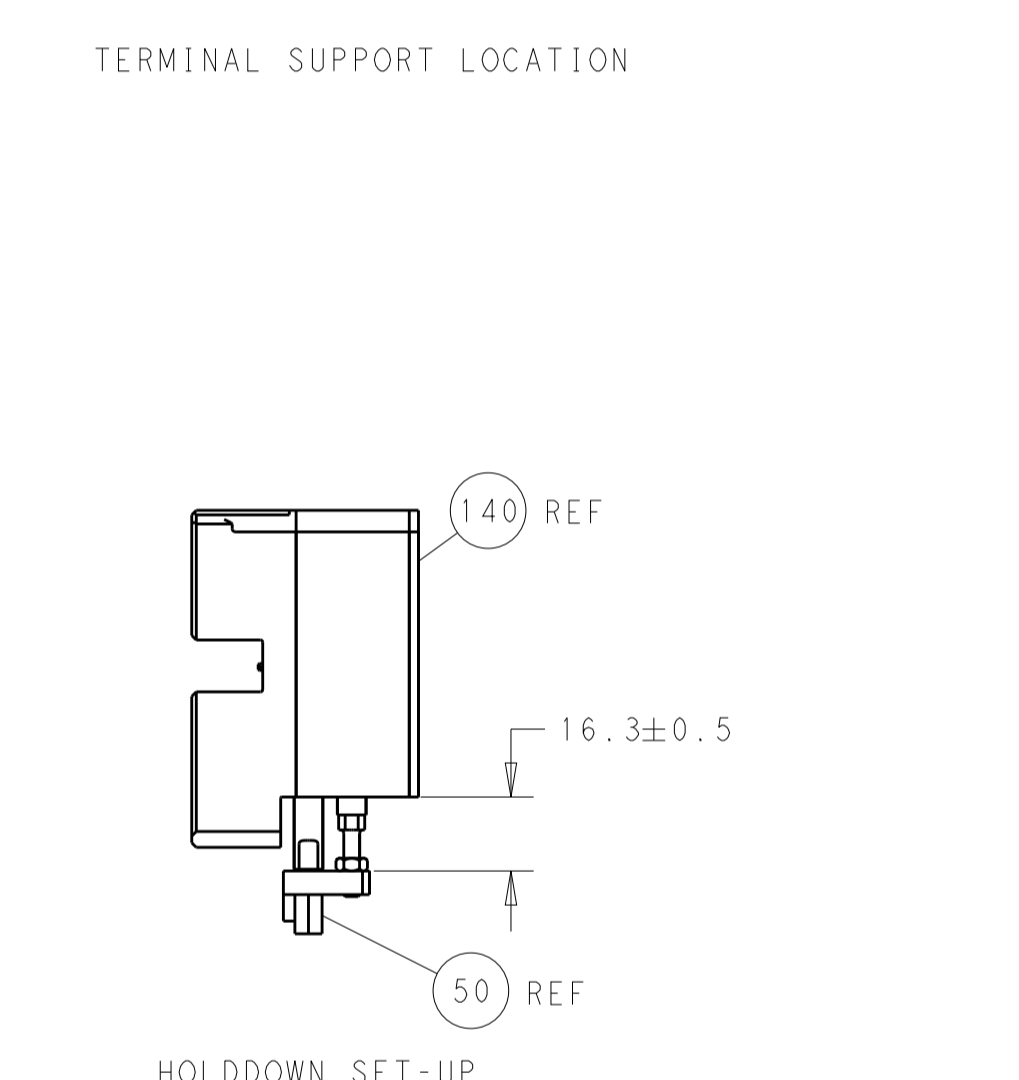
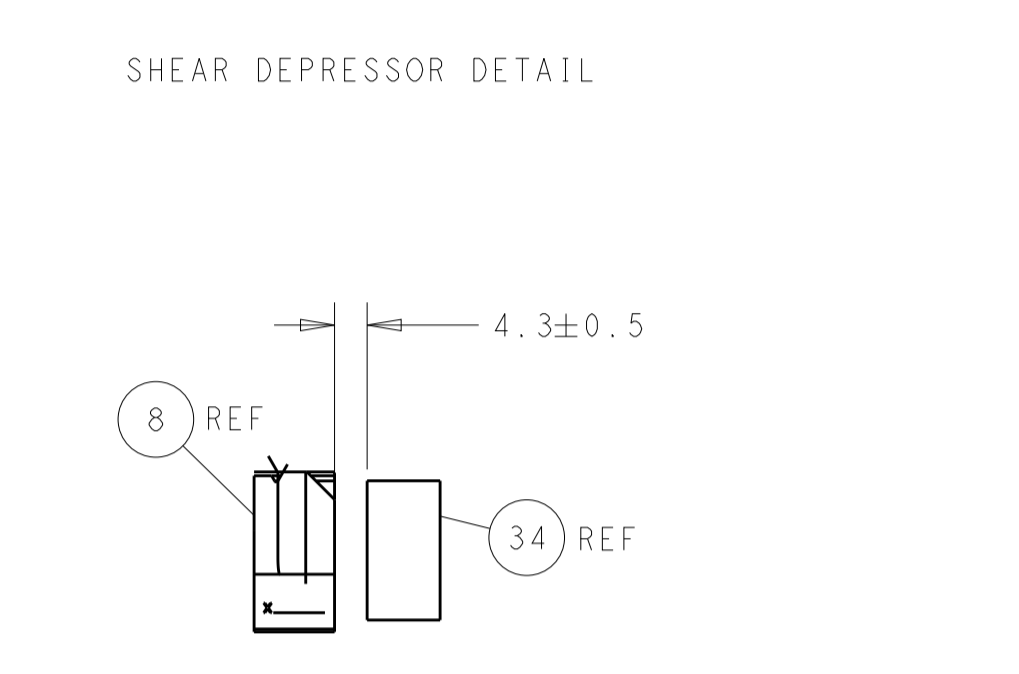
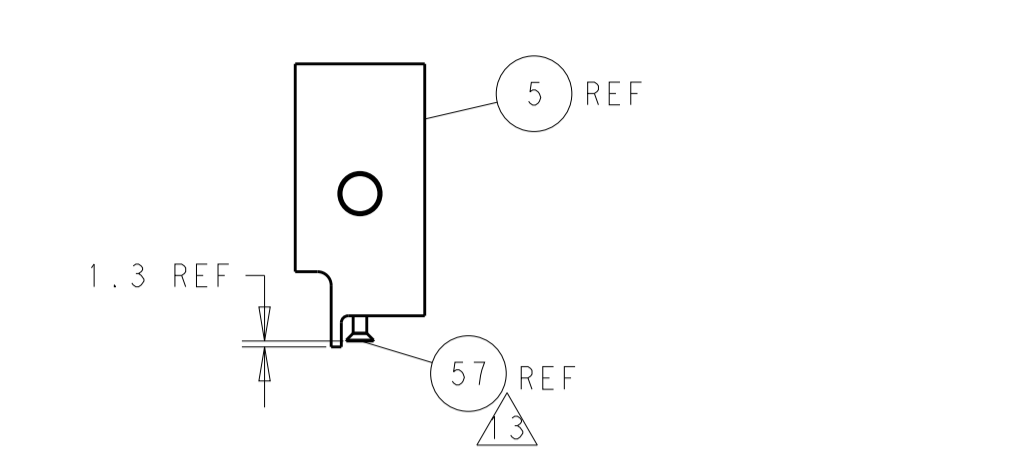
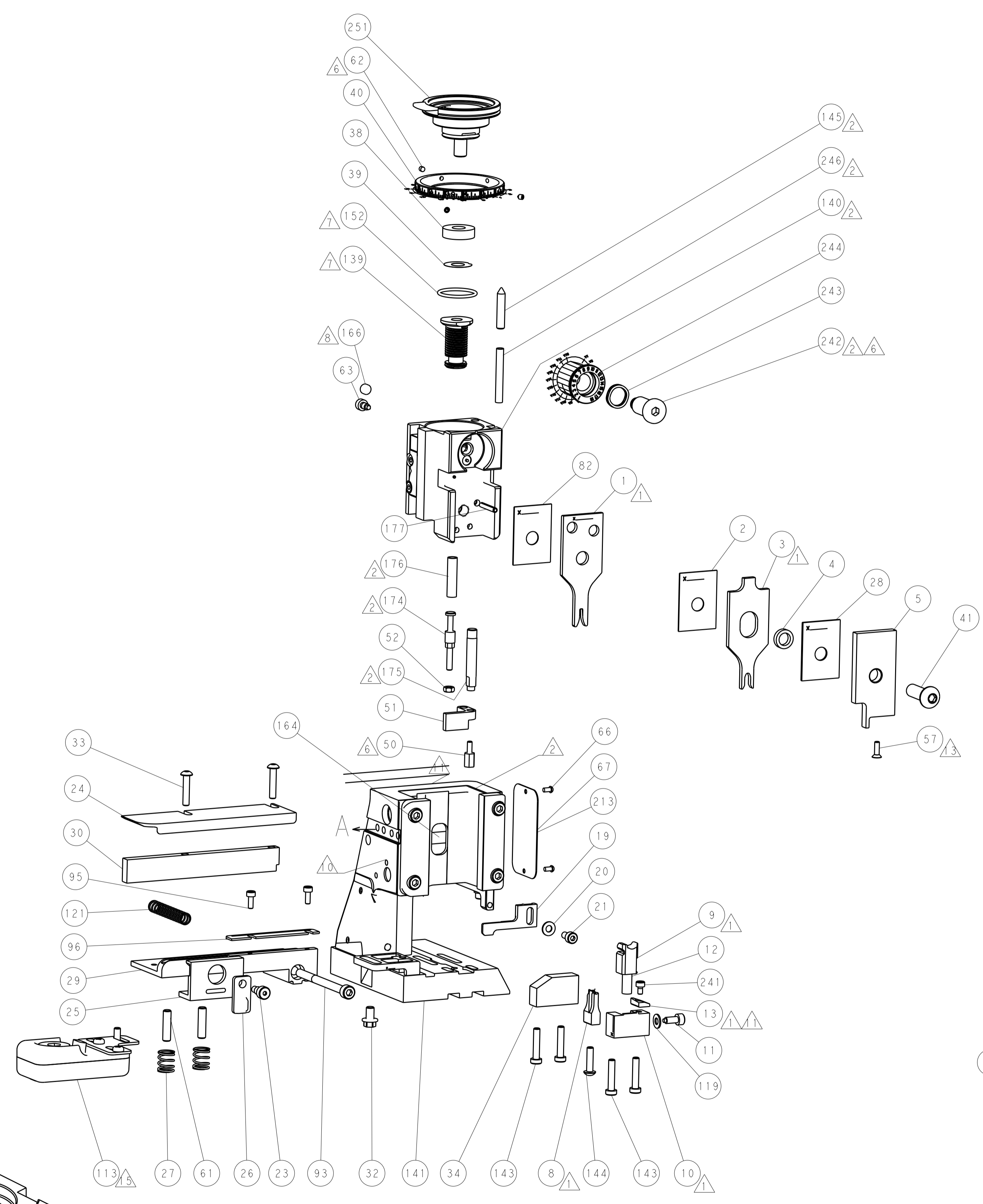
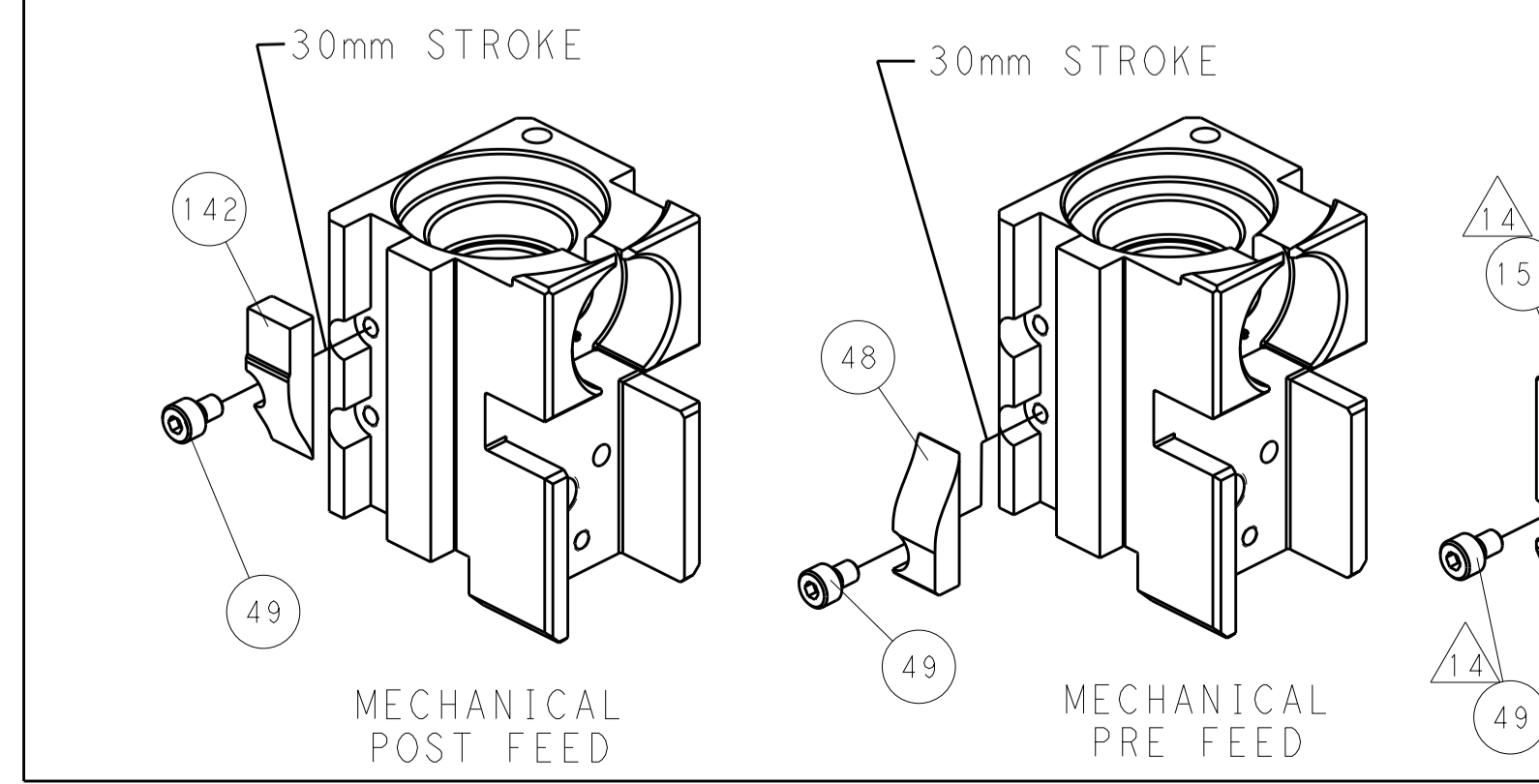
SERVO LATCH PLATE



DOUBLE ACTING PNEUMATIC WITH SENSORS



CAM POSITIONS



PACIFIC VERSION
 Shown on sheets 3 of 4 & 4 of 4
 (Atlantic version shown on sheets 1 of 4 & 2 of 4)

DIMENSIONS:		TOLERANCES UNLESS OTHERWISE SPECIFIED:		DWG: Y. YIN 25APR2011		TE Connectivity	
mm	0 PLC	±		CHK: G. BAILEY 25APR2011	NAME	Harrisburg, PA 17105-3608	
	1 PLC	±		APPV: S. XI 25APR2011	PRODUCT SPEC	Ocean Side Feed Applicator	
	2 PLC	±			APPLICATION SPEC	SIZE: CAGE CODE: DRAWING NO: RESTRICTED TO	
	3 PLC	±			WEIGHT	A1 00779 ©=2151064	
	4 PLC	±			FINISH	Customer Accessible Production Drawing SCALE: 1:2 SHEET 4 OF 4 REV H	
	ANGLES	±					