

MIN. TIN PLATE AREA.

(3.0) .12

MIN. GOLD PLATE AREA.

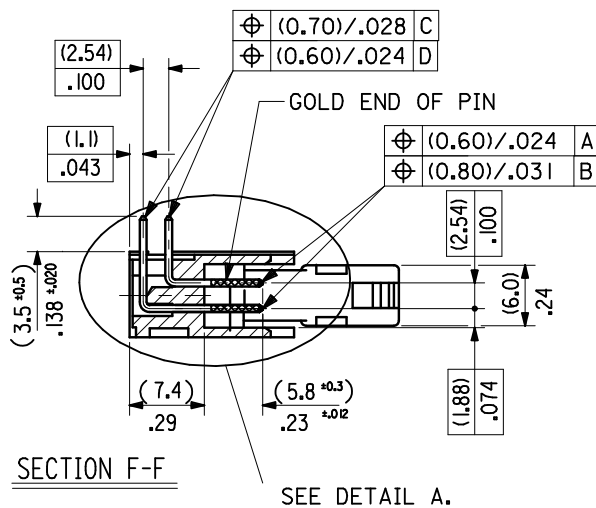
(5.10) .20

NOTES:

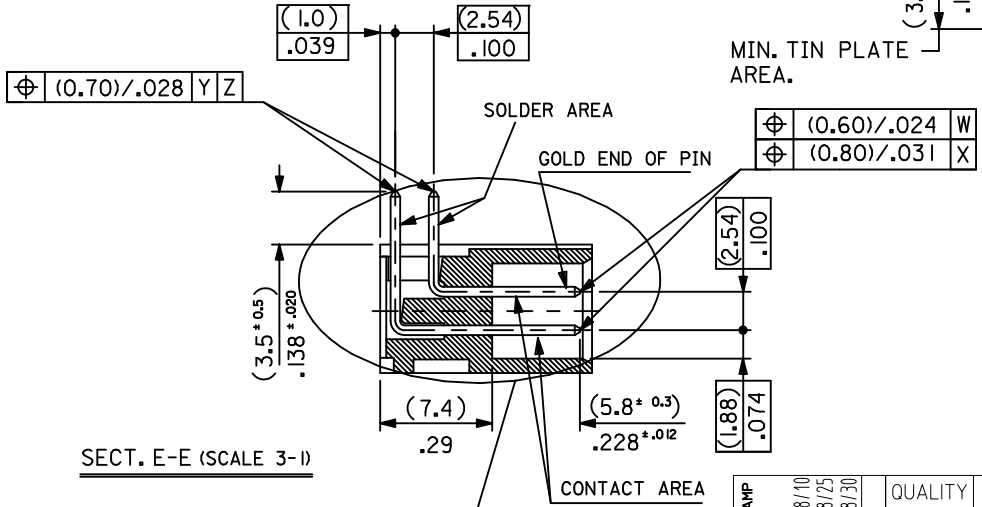
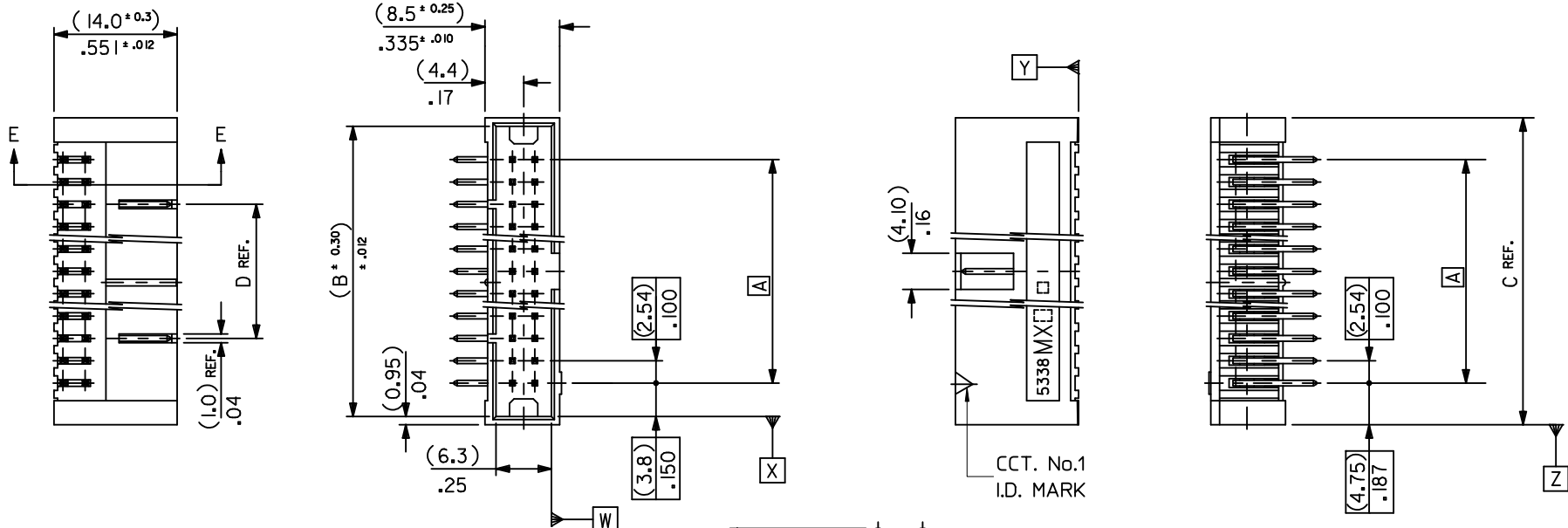
- 1: FOR MATERIAL SPECIFICATION SEE NOTE 1 ON SHEET 2.
- 2: FOR RECOMMENDED P.C.B.HOLE PATTERN, PART No's AND UNSTATED DIMENSIONS SEE SHEET 2.
- 3: PRODUCT SPEC.No.: PS-99020-0015.

MEASURE POINT FOR GOLD PLATING THICKNESS TYP.

DETAIL A
DIMENSIONS FOR SELECTIVE PLATING'S, SCALE 4:1



REMOVED REF'S TO COLOR STAMP EC NO: E2011-0063 DRWN: JOCONNOR 2010/08/10 CHKD: 2010/08/25 APPR: EFOLAN 2010/08/30	QUALITY SYMBOLS	GENERAL TOLERANCES (UNLESS SPECIFIED)		DIMENSION STYLE		SCALE	DESIGN UNITS	THIRD ANGLE PROJECTION	
	▽=0 ◻=0	mm	INCH	MM/IN		2:1	METRIC		
		4 PLACES ± --- ± ---	3 PLACES ± --- ± .008	DRAWN BY	DATE	TITLE			
		2 PLACES ± 0.20 ± .008	1 PLACE ± 0.20 ± ---	POB	1990/09/12	QIK FLECS R/A HEADER DIN EJECT LEVERS FOR IMPROVED WIPE FEMALE			
	ANGULAR ± 1/2°	DRAFT WHERE APPLICABLE MUST REMAIN WITHIN DIMENSIONS		APPROVED BY	DATE	MOLEX INCORPORATED			
				EFOLAN	2010/08/25	SDA-90572			
				MATERIAL NO.		DOCUMENT NO.			
				ENTER PART		SHEET NO.			
				SIZE A3		1 OF 4			
		THIS DRAWING CONTAINS INFORMATION THAT IS PROPRIETARY TO MOLEX INCORPORATED AND SHOULD NOT BE USED WITHOUT WRITTEN PERMISSION							



- NOTES:
- 1: FOR MATERIAL SPECIFICATION SEE NOTE 1. ON SHEET 4.
 - 2: FOR RECOMMENDED P.C.B.HOLE PATTERN, PART No's AND UNSTATED DIMENSIONS SEE SHEET 4.
 - 3: PRODUCT SPEC. No.: PS-99020-0015.

DETAIL A
DIMENSIONS FOR SELECTIVE PLATING'S, SCALE 4:1

REMOVED REF'S TO COLOR STAMP EC NO: E2011-0063 DRWN: JOCONNOR 2010/08/10 CHKD: 2010/08/25 APPR: EFOLAN 2010/08/30	QUALITY SYMBOLS	GENERAL TOLERANCES (UNLESS SPECIFIED)	DIMENSION STYLE	SCALE	DESIGN UNITS	THIRD ANGLE PROJECTION																						
	$\nabla = 0$ $\square = 0$	<table border="1"> <tr> <th></th> <th>mm</th> <th>INCH</th> </tr> <tr> <td>4 PLACES</td> <td>$\pm .15$</td> <td>$\pm .005$</td> </tr> <tr> <td>3 PLACES</td> <td>$\pm .10$</td> <td>$\pm .003$</td> </tr> <tr> <td>2 PLACES</td> <td>± 0.20</td> <td>$\pm .008$</td> </tr> <tr> <td>1 PLACE</td> <td>± 0.20</td> <td>$\pm .015$</td> </tr> </table>		mm	INCH	4 PLACES	$\pm .15$	$\pm .005$	3 PLACES	$\pm .10$	$\pm .003$	2 PLACES	± 0.20	$\pm .008$	1 PLACE	± 0.20	$\pm .015$	MM/IN	2:1	METRIC								
		mm	INCH																									
	4 PLACES	$\pm .15$	$\pm .005$																									
3 PLACES	$\pm .10$	$\pm .003$																										
2 PLACES	± 0.20	$\pm .008$																										
1 PLACE	± 0.20	$\pm .015$																										
DESCRIPTION	<table border="1"> <tr> <th>DRAWN BY</th> <th>DATE</th> <th>TITLE</th> </tr> <tr> <td>POB</td> <td>1990/09/17</td> <td>QIK FLECS RIGHT ANGLE HEADER FOR IMPROVED WIPE FEMALE</td> </tr> <tr> <th>CHECKED BY</th> <th>DATE</th> <th></th> </tr> <tr> <td></td> <td></td> <td></td> </tr> <tr> <th>APPROVED BY</th> <th>DATE</th> <th></th> </tr> <tr> <td>EFOLAN</td> <td>2010/08/25</td> <td></td> </tr> <tr> <th>MATERIAL NO.</th> <th>DOCUMENT NO.</th> <th>SHEET NO.</th> </tr> <tr> <td>ENTER PART</td> <td>SDA-90572</td> <td>3 OF 4</td> </tr> </table>	DRAWN BY	DATE	TITLE	POB	1990/09/17	QIK FLECS RIGHT ANGLE HEADER FOR IMPROVED WIPE FEMALE	CHECKED BY	DATE					APPROVED BY	DATE		EFOLAN	2010/08/25		MATERIAL NO.	DOCUMENT NO.	SHEET NO.	ENTER PART	SDA-90572	3 OF 4	MOLEX INCORPORATED		
DRAWN BY	DATE	TITLE																										
POB	1990/09/17	QIK FLECS RIGHT ANGLE HEADER FOR IMPROVED WIPE FEMALE																										
CHECKED BY	DATE																											
APPROVED BY	DATE																											
EFOLAN	2010/08/25																											
MATERIAL NO.	DOCUMENT NO.	SHEET NO.																										
ENTER PART	SDA-90572	3 OF 4																										
REV	DRAFT WHERE APPLICABLE MUST REMAIN WITHIN DIMENSIONS	SIZE A3	THIS DRAWING CONTAINS INFORMATION THAT IS PROPRIETARY TO MOLEX INCORPORATED AND SHOULD NOT BE USED WITHOUT WRITTEN PERMISSION																									

