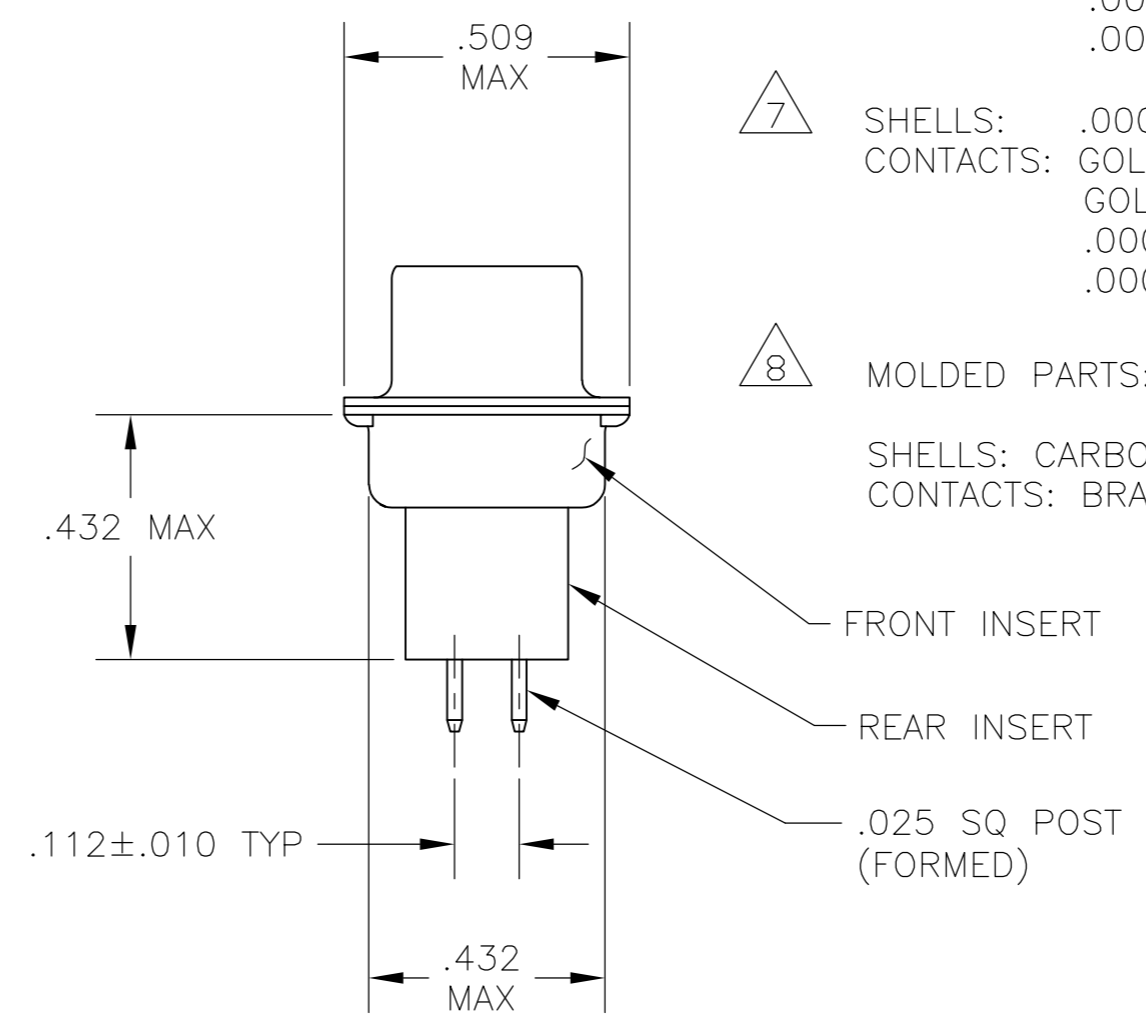
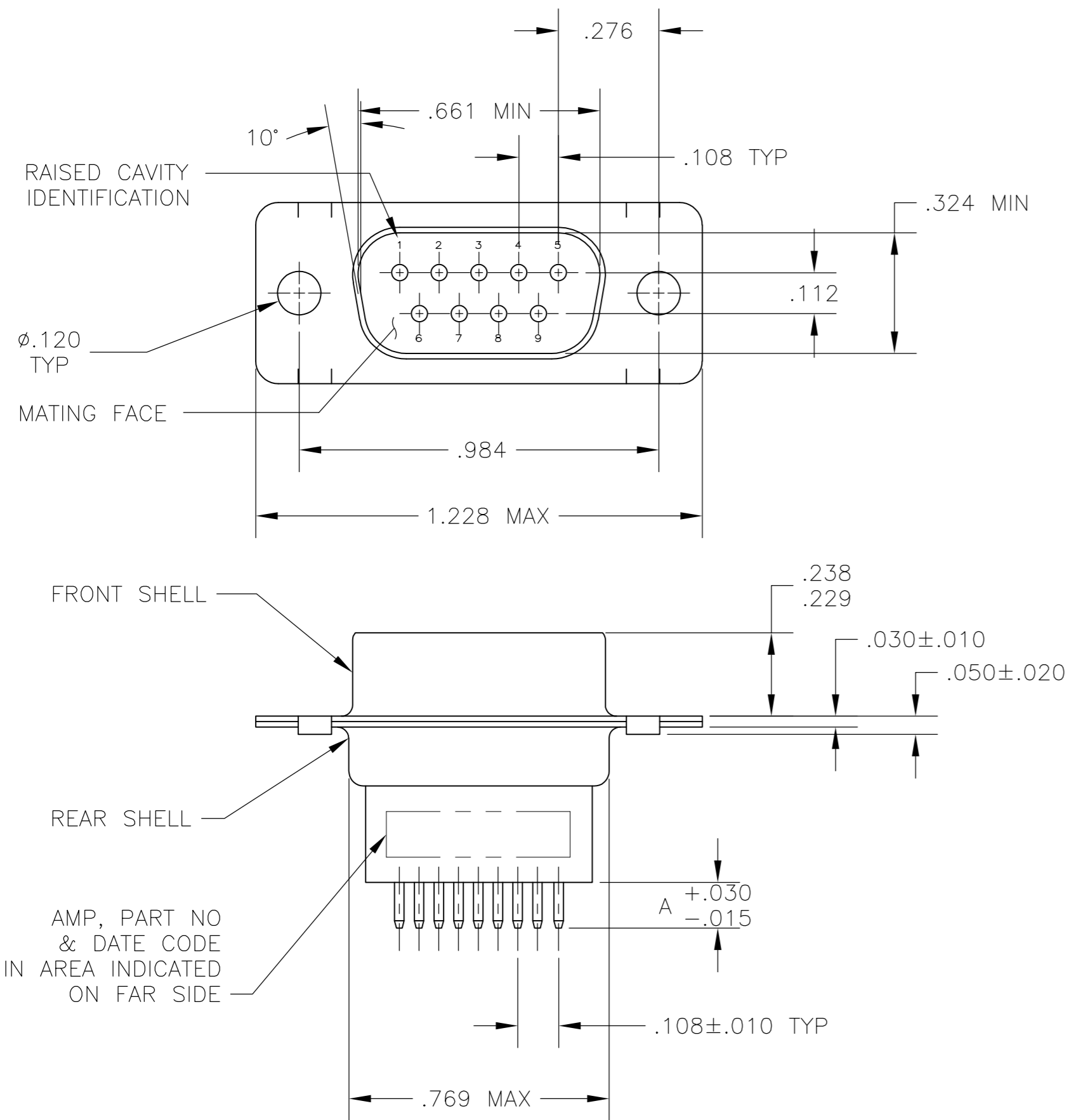


THIS DRAWING IS UNPUBLISHED. RELEASED FOR PUBLICATION  
 © COPYRIGHT 2005 By - ALL RIGHTS RESERVED.

LOC	DIST	REVISIONS					
GP	00	P	LTR	DESCRIPTION	DATE	DWN	APVD
		Z		REVISED PER ECO-14-011808	09AUG2014	AP	SB



1. NOTE DELETED.
2. NOTE DELETED.
3. NOTE DELETED.
4. NOTE DELETED.
5. NOTE DELETED.
6. SHELLS: .000200 MIN ZINC WITH YELLOW CHROMATE COATING.  
 CONTACTS: .000030 MIN GOLD ON MATING END,  
 .000100 MIN TIN-LEAD ON SOLDER END, BOTH OVER  
 .000050 MIN NICKEL.  
 OR  
 GOLD FLASH OVER PALLADIUM-NICKEL  
 .000030 MIN TOTAL ON MATING END,  
 .000100 MIN TIN-LEAD ON SOLDER END, BOTH OVER  
 .000050 MIN NICKEL.
7. SHELLS: .000200 MIN ZINC WITH YELLOW CHROMATE COATING.  
 CONTACTS: GOLD PLATED FOR LENGTH OF .150 MIN FROM MATING END,  
 GOLD FLASH IN MATED AREA,  
 .000100 MIN TIN-LEAD ON SOLDER END, ALL OVER  
 .000050 MIN NICKEL.
8. MOLDED PARTS: GLASS-FILLED PBT OR GLASS-FILLED NYLON,  
 UL94V-0 RATED. COLOR: BLACK  
 SHELLS: CARBON STEEL  
 CONTACTS: BRASS

SUPSD BY 205733-7	7	.188	205733-8
	6	.188	205733-7
SUPSD BY 745410-5	7	.651	205733-6
SUPSD BY 745410-5	6	.651	205733-5
SUPSD BY 205733-3	7	.427	205733-4
SUPSD BY 745410-1	6	.427	205733-3
SUPSD BY 205733-1	7	.125	205733-2
	6	.125	205733-1
CONTACT FINISH	A		PART NUMBER

THIS DRAWING IS A CONTROLLED DOCUMENT.

DWN	J. POLIGNONE	01FEB07
CHK	E. BRIANT	01FEB07
APVD	E. BRIANT	01FEB07
PRODUCT SPEC	108-40025	
APPLICATION SPEC	114-40013	
WEIGHT	-	
CUSTOMER DRAWING		

**TE** TE Connectivity

PLUG ASSEMBLY, SIZE 1, 9 POSN, VERTICAL  
 AMPLIMITE HDP

SIZE	CAGE CODE	DRAWING NO	RESTRICTED TO
A2	00779	C=205733	-
SCALE	SHEET	REV	
NTS	1 of 1	Z	