

**Technical specification:**

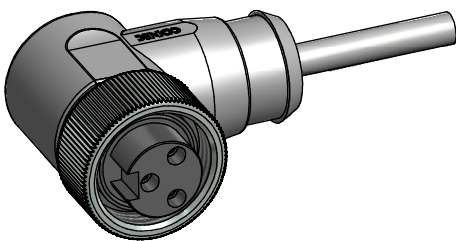
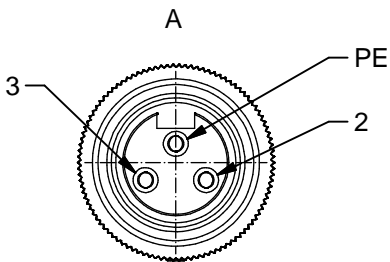
Rated voltage: IEC 60664-1	300 V
Overvoltage category: IEC 60664-1	2
Overvoltage: IEC 60664-1	2,7 kV
Current rating: IEC 60512-3 at 40°C	0,75mm <sup>2</sup> 1,5mm <sup>2</sup> 8 A 12 A
Insulation resistance: IEC 60512	>=100 MΩ
Pollution degree: IEC 60664-1	3/2
Degree of protection: IEC 60529	IP 68, in mated condition
Temperature range: IEC 60664-1	-30°C ... +80°C
Mating cycles: IEC 60512-9a	>=100
Termination:	crimped

**Materials:**

Contact:	CuZn
Contact plating:	Nickel, gold plated
Contact carrier:	TPU, UL 94
Coupling nut:	CuZn, nickel plated
Moulding body:	TPU, UL 94, grey

**Contact assignment:**

- PE) green-yellow
- 2) brown
- 3) blue



Part no:	Description:	Length L:	Cable:
41-01016	SAL - 7/8 - RKW2PE - 2 / A6	2m	PVC, UL 20207, grey, 3x0,75mm <sup>2</sup> Cable: 781-A67300
41-01017	SAL - 7/8 - RKW2PE - 3 / A6	3m	
41-01018	SAL - 7/8 - RKW2PE - 5 / A6	5m	
41-01019	SAL - 7/8 - RKW2PE - 10 / A6	10m	
41-xxxxx	SAL - 7/8 - RKW2PE - ... / A6	x	
41-01113	SAL - 7/8 - RKW2PE - 2 / A6 / 150	2m	PVC, UL 20207, grey, 3x1,50mm <sup>2</sup> Cable: 781-A68300
41-01114	SAL - 7/8 - RKW2PE - 3 / A6 / 150	3m	
41-01115	SAL - 7/8 - RKW2PE - 5 / A6 / 150	5m	
41-01116	SAL - 7/8 - RKW2PE - 10 / A6 / 150	10m	
41-xxxxx	SAL - 7/8 - RKW2PE - ... / A6 / 150	x	

D see data sheet cable

DO NOT ALTER CAD DRAWING BY HAND Directive 2002/95/EC RoHS compliant	Index: b 02.02.11 VF Ä3891 cable type changed, technical specification changed, part no. cable in table added, neutral line added	dim. in mm	title:							
	tolerance of cable: L ≤ 4m: L + 40mm L > 4m: L + 1%		<table border="1"> <tr> <td>date</td> <td>name</td> </tr> <tr> <td>11.10.07</td> <td>Franz</td> </tr> <tr> <td>11.10.07</td> <td>Mankopf</td> </tr> </table>	date	name	11.10.07	Franz	11.10.07	Mankopf	Female connector 7/8" angled
	date	name								
	11.10.07	Franz								
11.10.07	Mankopf									
general tolerance: 0 ± 0,50mm 0,0 ± 0,25mm 0,00 ± 0,10mm		dwg no:								
THIS DRAWING MAY NOT BE COPIED OR REPRODUCED IN ANY WAY, AND MAY NOT BE PASSED ON TO A THIRD PARTY WITHOUT WRITTEN PERMISSION. OWNERSHIP AND COPYRIGHT OF CONEC GmbH		41K1A309								
		part no:		see table						