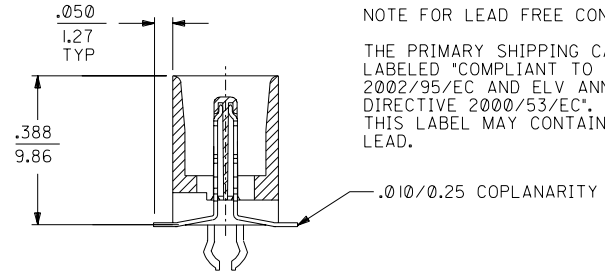


NOTES:

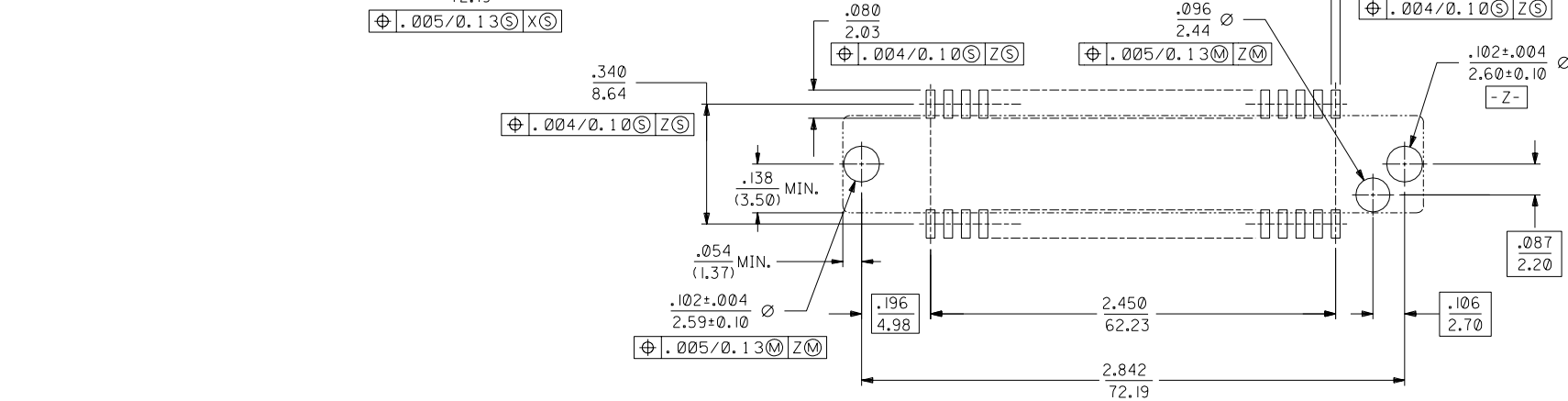
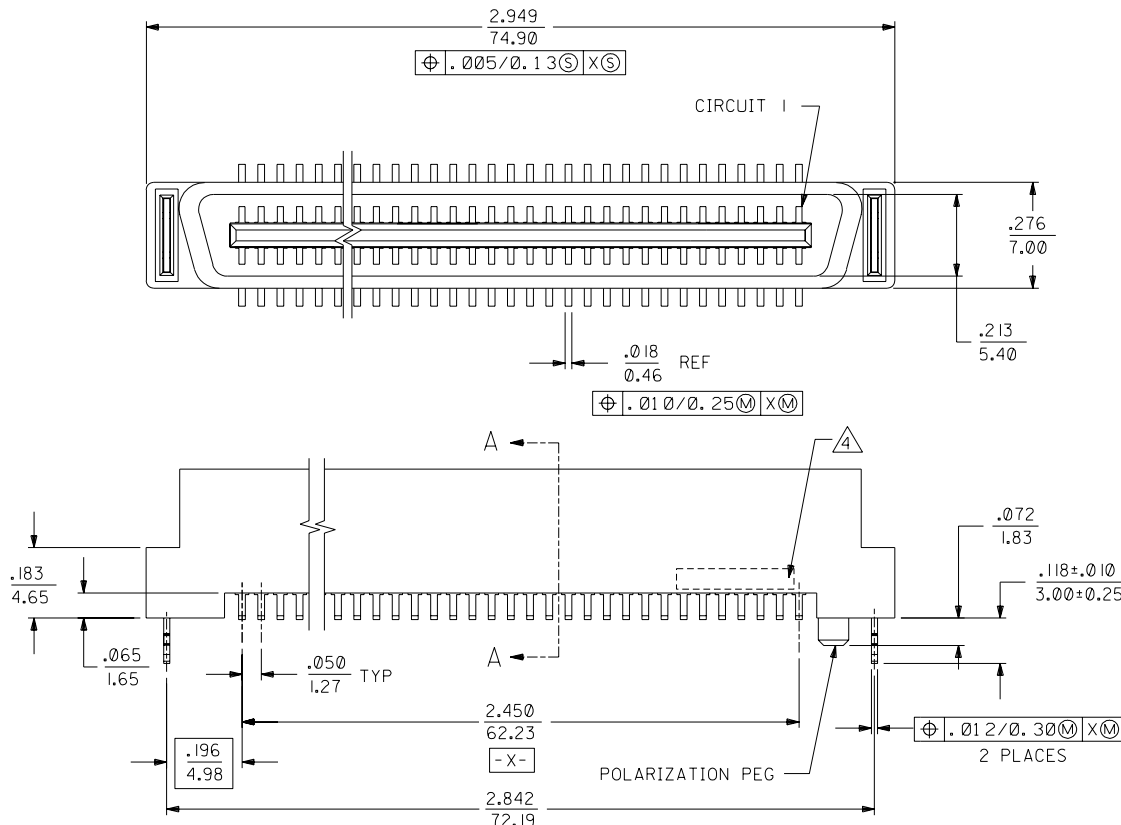
- 1) MATERIALS:
HOUSING: I.R. COMPATIBLE POLYMER, GLASS FILLED,
UL 94 V 0, BLACK
TERMINALS: BRASS
METAL PEGS- PHOSPHOR BRONZE.
- 2) PLATING:
.000030/(0.00076) MINIMUM GOLD IN CONTACT AREA AND
.000050/(0.00127) MINIMUM TIN IN TAIL AREA OVER
.000075/(0.00191) MINIMUM NICKEL UNDERPLATING OVERALL.
- 3) ASSEMBLY MATES WITH MOLEX P/N SDA-71660-****,
CONFORMS TO PRODUCT SPECIFICATION PS-71660.
- 4) FOUR DIGIT DATE CODE (WK, YR), EXAMPLE => 26 96
LOCATED IN AREA INDICATED.
- 5) PRODUCT PACKAGED PER PK-70873-055.

NOTE FOR LEAD FREE CONVERSION:

THE PRIMARY SHIPPING CARTON WILL BE
LABELED "COMPLIANT TO ROHS DIRECTIVE
2002/95/EC AND ELV ANNEX II OF
DIRECTIVE 2000/53/EC". CARTONS WITHOUT
THIS LABEL MAY CONTAIN PRODUCT WITH
LEAD.



SECTION A-A
SCALE 4:1



F	LEAD FREE CONV. ECN UCP2004-2096 RKADAMS 04/04/23
E	CHANGED PK SPEC. ECN UCP2003-1596 RWHITE 03/02/06
D	ADD PEG LNCH DIM ECN UDT2002-1289 BBARKER 02/05/13
C	REV PACKAGING ECN UDT2000-1183 ACHAMMER 00/05/30
B	REVISED PER ECN UDT1999-1036 KSMITH 99/05/26
AI	REVISED PER ECN U70444 ACHAMMER 96-11-25
A	INITIAL RELEASE PER ECN U61057 3-1-96 RAN

DIMENSIONS SHOWN (METRIC) INCH		▽ = 0		= 0		MFG, SH, REV, LTR, REVISIONS	
UNLESS OTHERWISE SPECIFIED TOLERANCES: ANGULAR ± 1/2°		REVISE ONLY ON CAD SYSTEM					
3 PLACE	± .005	---	---	TITLE			
2 PLACE	± ---	± 0.13	---	SALES ASSEMBLY			
1 PLACE	---	± ---	---	EBBI EXT. HEIGHT VERTICAL			
DRAFT WHERE APPLICABLE MUST REMAIN WITHIN DIMENSIONS				100 CIRCUIT SMT CONNECTOR			
MOLEX INCORPORATED		SHEET NO. DATE		71661-5910			
LITSL, ILL. 60532		U.S.A. 1 OF 1 03/01/96		SDA-71661-5910			
DRWG. BY	CHK'D. BY	SCALE	4: 1	FILE NAME	THIS DRAWING CONTAINS INFORMATION THAT IS PROPRIETARY TO MOLEX INC. AND SHOULD NOT BE USED WITHOUT WRITTEN PERMISSION	DIV.	SIZE
RAN	RAN			57166159		DA	C
APP'D. BY	GWF			301			