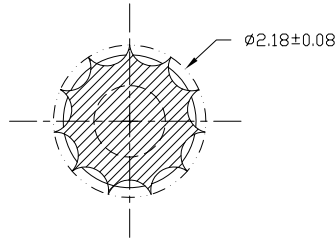
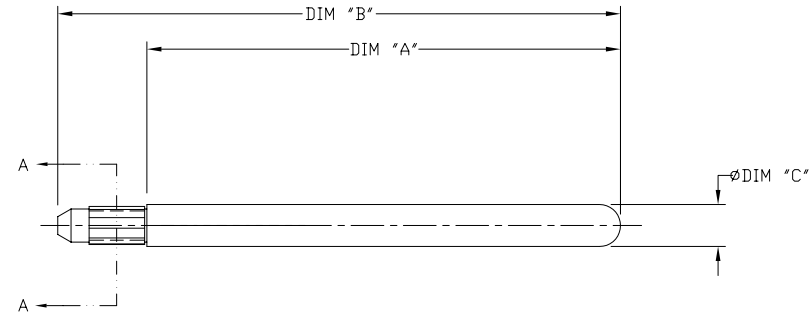


| PRODUCT NUMBER | DIM "A" | DIM "B" | DIM "C" | LF OPTION |
|----------------|---------|---------|---------|-----------|
| 74749-101      | 27.10   | 32.20   | 2.40    | NOTE 4    |
| 74749-102 **   | 10.00   | 15.10   |         |           |
| 74749-202 **   | 10.00   | 15.10   | 3.43    |           |

\*\* CUSTOMER SPECIAL - THIS PART WILL NOT WORK IN ALL APPLICATIONS.

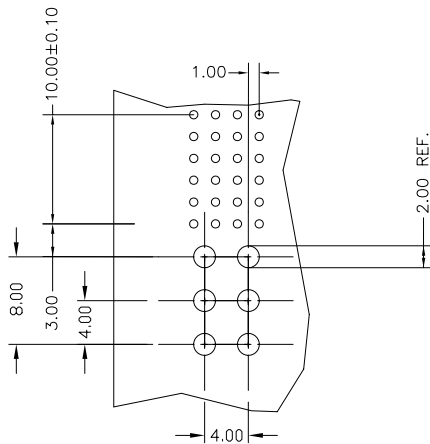


SECTION A - A  
SCALE 4:1



NOTES:

- MATERIAL: STAINLESS STEEL, TYPE 303.  
FINISH: PASSIVATED.
- THIS GUIDE PIN IS INTENDED TO BE INSERTED INTO A 2.00±.08 NONPLATED THROUGH HOLE.
- THIS KEYING PIN IS TO BE USED WITH RECEPTACLE P/N 88916.
- ADD 'LF' SUFFIX AT THE END OF PART NUMBER FOR LEAD FREE OPTION.
- THIS PRODUCT MEETS EUROPEAN UNION DIRECTIVES AND OTHER COUNTRY REGULATION AS DESCRIBED IN GS-22-008.



RECOMMENDED HOLE PATTERN  
COMPONENT SIDE

|                           |          |                       |                                  |                                       |                               |
|---------------------------|----------|-----------------------|----------------------------------|---------------------------------------|-------------------------------|
| mat'l. code<br>SEE NOTE 1 |          | surface<br>ISO 1302 ✓ | tolerance<br>ISO 406<br>ISO 1101 | projection<br>MM                      | product family<br>METRAL (tm) |
| ltr                       | ecm no   | dr                    | date                             | tolerances unless otherwise specified | title                         |
| A                         | V80809   | MDF                   | 4/24/98                          | angles .X±0.3                         | PRESS-FIT KEYING<br>PLUG PIN  |
| B                         | V81424   | GCR                   | 8/18/98                          | linear .XX±0.13                       |                               |
| C                         | V20723   | CGD                   | 4/15/02                          | σ±2' .XXX±0.051                       |                               |
| D                         | V21645   | TAB                   | 10/15/02                         | dr M. FETROW 4/24/98                  | scale 3:1                     |
| E                         | V04-0068 | HTB                   | 2/06/04                          | enfr C. PENDLETON 4/24/98             | FCI                           |
| F                         | M06-0286 | MNR                   | 7/27/06                          | chr C. PENDLETON 4/24/98              |                               |
| G                         | M06-0400 | MHT                   | 10/10/06                         | appd C. PENDLETON 4/24/98             | dwg no<br>74749               |
| sheet index               | revision | G                     |                                  |                                       | sheet 1 of 1 size<br>A3       |
|                           | sheet    | 1                     |                                  |                                       | type Product Customer Drawing |