


| SIGN | DATE | DESCRIPTION | APPROVER |
|------|------|-------------|----------|
| | | | |
| | | | |
| | | | |

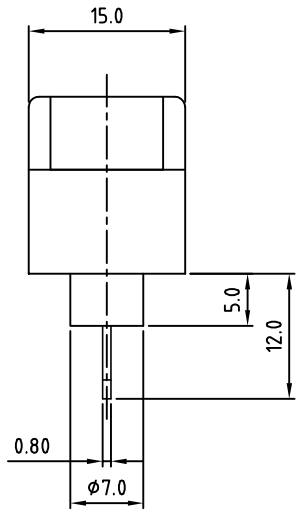
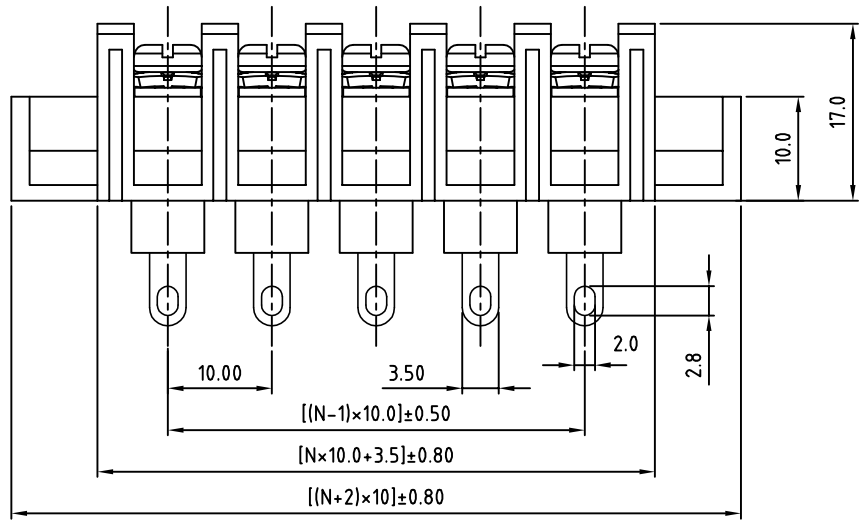
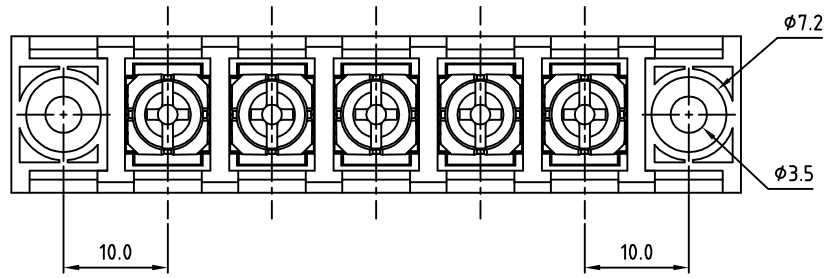
THIS IS CAD DRAWING, DO NOT REVISE MANUALLY!!!

SPECIFICATIONS

| | |
|------------------------|--------------------------------|
| VOLTAGE & CURRENT: | 300 V, 20 A |
| WITHSTANDING VOLTAGE: | AC 2000 V/Min |
| INSULATION RESISTANCE: | 1000 MΩ OR MORE AT DC 500 V |
| TEMPERATURE RANGE: | -40 °C ~ +105 °C |
| SCREW TORQUE VALUE: | 12 Lb-In. |
| WIRE RANGE: | 22 - 12 AWG |
| 1) MOLDED PARTS: | THERMOPLASTIC, UL 94 V-0 BLACK |
| 2) TERMINAL: | BRASS, 0.8t, Tin PLATED |
| 3) TERMINAL SCREWS: | STEEL, Ni PLATED, M3.5 |

APPROVAL: 

RoHS Compliant



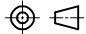
PART NUMBER: OSTYK606XX330

- NO. OF POLES
- 02: 2 POLES
 - 03: 3 POLES
 - 04: 4 POLES
 - ...
 - 30: 30 POLES

N=Number of poles

THESE DRAWINGS AND SPECIFICATIONS ARE THE PROPERTY OF ON-SHORE TECHNOLOGY, INC. AND SHALL NOT BE REPRODUCED, COPIED OR USED IN ANY MANNER WITHOUT THE PRIOR WRITTEN CONSENT OF ON-SHORE TECHNOLOGY, INC.



| | | | | | | |
|-----------------------|----------------------|--|-------------------|---|-------------|-------------------|
| TITLE | | OSTYK-606 With Flange&Without Cover Series | | | | |
| PART NO. | | OSTYK606XX330 | | | DWG NO. | OSTYK606XX330.DWG |
| APPROVED | CHECKED | DESIGNED | DRAWN | CUST NO. | Tolerance | |
| Shi Jun 2007.07.18 | Seamus 2007.07.18 | LUCY 2007.7.18 | LUCY 2007.7.18 |  | UNIT: mm | X. ±0.50 |
| SHEET: 01/01 | | | | | SCALE: NONE | X.X ±0.30 |
| | | | | | REV.: B | X.XX ±0.10 |
| | | | | | X° | ±1° |