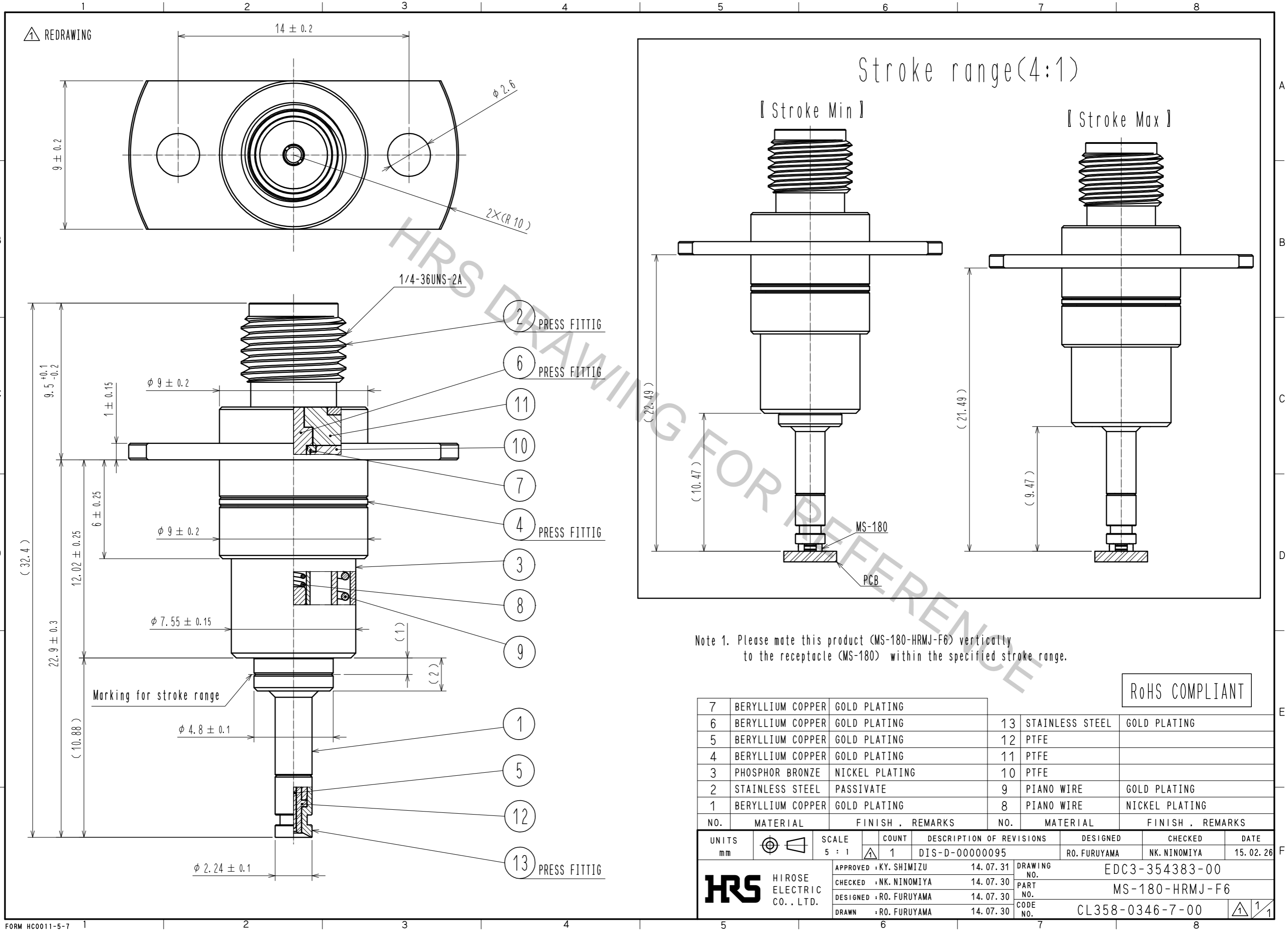


Aug.1.2018 Copyright 2018 HIROSE ELECTRIC CO., LTD. All Rights Reserved.  
 In case that the application demands a high level of reliability, such as automotive,  
 please contact a company representative for further information.



Note 1. Please mate this product (MS-180-HRMJ-F6) vertically to the receptacle (MS-180) within the specified stroke range.

RoHS COMPLIANT

NO.	MATERIAL	FINISH . REMARKS	NO.	MATERIAL	FINISH . REMARKS
7	BERYLLIUM COPPER	GOLD PLATING	13	STAINLESS STEEL	GOLD PLATING
6	BERYLLIUM COPPER	GOLD PLATING	12	PTFE	
5	BERYLLIUM COPPER	GOLD PLATING	11	PTFE	
4	BERYLLIUM COPPER	GOLD PLATING	10	PTFE	
3	PHOSPHOR BRONZE	NICKEL PLATING	9	PIANO WIRE	GOLD PLATING
2	STAINLESS STEEL	PASSIVATE	8	PIANO WIRE	NICKEL PLATING
1	BERYLLIUM COPPER	GOLD PLATING			

UNITS	SCALE	COUNT	DESCRIPTION OF REVISIONS	DESIGNED	CHECKED	DATE
mm	5 : 1	1	DIS-D-00000095	RO. FURUYAMA	NK. NINOMIYA	15.02.26

APPROVED	CHECKED	DESIGNED	DRAWN	DRAWING NO.	PART NO.	CODE NO.
KY. SHIMIZU	NK. NINOMIYA	RO. FURUYAMA	RO. FURUYAMA	EDC3-354383-00	MS-180-HRMJ-F6	CL358-0346-7-00
14.07.31	14.07.30	14.07.30	14.07.30			