

REVISION S
DO NOT SCALE FROM THIS PRINT

UNLESS OTHERWISE NOTED TOLERANCES ARE:
 DIMENSIONS ARE IN INCHES
 ONE PLACE DECIMALS ±.1[2.5] THREE PLACE DECIMALS ±.005 [.13]
 TWO PLACE DECIMALS ±.01[.3] FOUR PLACE DECIMALS ±.002 [.05]
 ANGLES ± 2°
 TITLE: .100 x .100 TERMINAL STRIP w/ MOLDED IN END SHROUDS
 DWG NO: TSSH-1XX-01-XXX-DH-XX
 SHEET 1 OF 2

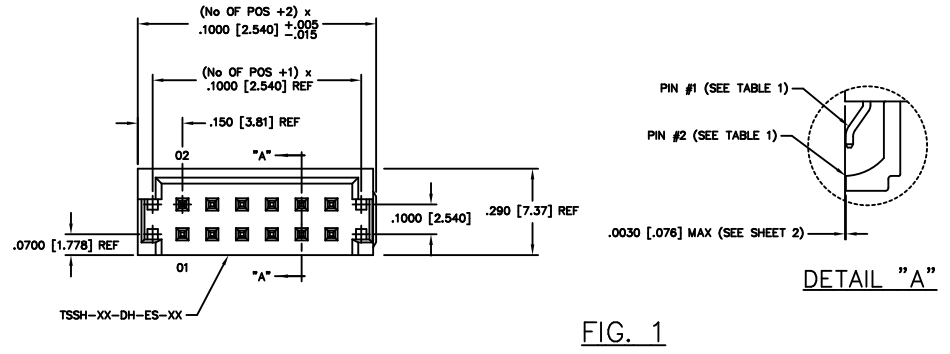
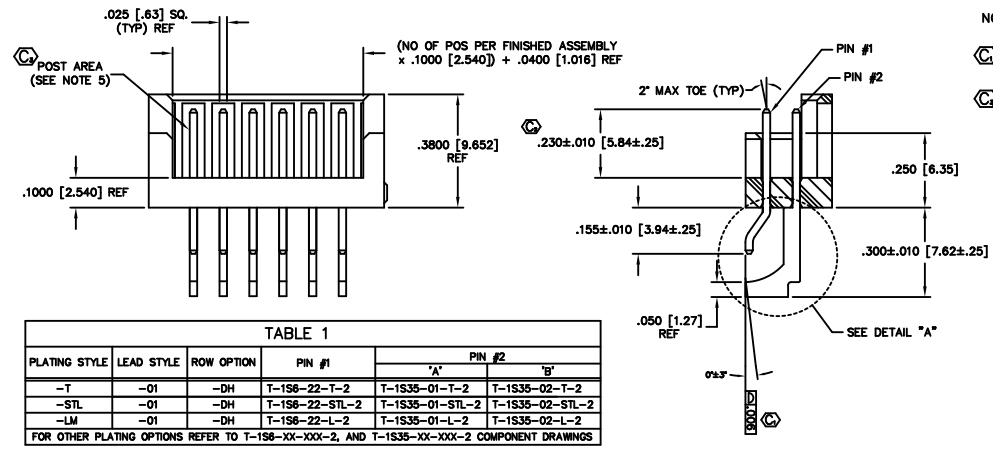


FIG. 1

TSSH-1XX-01-XXX-DH-XX
 NO. OF POSITIONS -02 THRU -34
 LEAD STYLE -01
 PLATING SPEC. (SEE TABLE 1)
 -T: MATTE TIN CONTACT AND TAIL
 -S: SELECTIVE, 30 Au / 50 NI ON CONTACT, MATTE TIN TAIL
 -L: LIGHT SELECTIVE, 10 Au / 50 NI MIN ON CONTACT, MATTE TIN TAIL
 -F: FLASH SELECTIVE, 3 Au / 50 NI MIN ON CONTACT, MATTE TIN TAIL
 -H: HEAVY GOLD, 30 Au / 50 NI ON CONTACT, 3 Au / 50 NI MIN ON TAIL
 -TL: TIN/LEAD (90/10+/-5%) CONTACT AND TAIL
 -STL: SELECTIVE, 30 Au / 50 NI MIN ON CONTACT, TIN/LEAD (90/10+/-5%) TAIL
 -TM: MATTE TIN CONTACT AND TAIL
 -LM: LIGHT SELECTIVE, 10 Au / 50 NI MIN ON CONTACT, MATTE TIN TAIL
 -SM: SELECTIVE, 30 Au / 50 NI ON CONTACT, MATTE TIN TAIL
 -FM: FLASH SELECTIVE, 3 Au / 50 NI MIN ON CONTACT, MATTE TIN TAIL
 OPTION #1
 -A: ALIGNMENT PIN (SEE FIG. 2) (MOLDED)
 -TR: TAPE AND REEL
 -P: PICK AND PLACE PAD (USE PPP-18, SEE FIG. 3, 5 POS. MIN)
 ROW OPTION
 -DH: DOUBLE HORIZONTAL (USE TSSH-XX-DH-ES-XX-X)

- NOTES:
 1. (C) REPRESENTS A CRITICAL DIMENSION.
 2. SEE SHEET 2 FOR FLUSH SPECS.
 3. MAX FLASH ALLOWED: .010 [.25].
 4. PUSHOUT FORCE: 1.5 LB. MINIMUM.
 5. NO BANDOLIER MARKS ARE ALLOWED IN THE POST AREA.
 6. TUBE PLUG TO BE LOCATED IN THE BODY AREA AND NOT THE TAIL AREA OF THE TUBE.
 7. INSULATOR MATERIAL: BLACK, LCP, UL 94 VO



SECTION "A-A" (ROTATED 90°)

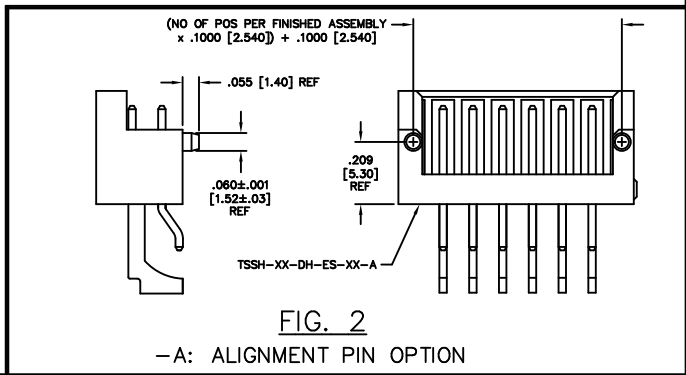
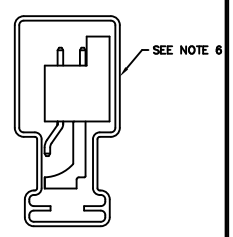


FIG. 2
-A: ALIGNMENT PIN OPTION

PLATING STYLE	LEAD STYLE	ROW OPTION	PIN #1	PIN #2	
				"A"	"B"
-T	-01	-DH	T-1S6-22-T-2	T-1S35-01-T-2	T-1S35-02-T-2
-STL	-01	-DH	T-1S6-22-STL-2	T-1S35-01-STL-2	T-1S35-02-STL-2
-LM	-01	-DH	T-1S6-22-L-2	T-1S35-01-L-2	T-1S35-02-L-2

FOR OTHER PLATING OPTIONS REFER TO T-1S6-XX-XXX-2, AND T-1S35-XX-XXX-2 COMPONENT DRAWINGS

PACKAGING VIEW



ROW OPTION	PACKAGING TUBE	PLUG
-DH	PT-1-24-01-44	TP-07

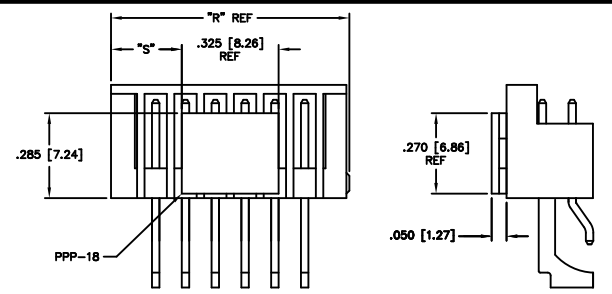


FIG. 3
-P: PICK AND PLACE PAD OPTION (USE PPP-18, 5 POS. MIN)

FOR ODD # POSITION FG
 "R" = (No OF POS + 2) x .100 [2.54]
 "S" = {("R" - .325 [8.26]) / 2} ±.020 [.51]
 FOR EVEN # POSITION FG
 "R" = (No OF POS + 1) x .100 [2.54]
 "S" = {("R" - .325 [8.26]) / 2} ±.020 [.51]

PROPRIETARY NOTE
 THE EXACTLY CORRECT DIMENSIONS OF THIS PRODUCT ARE SHOWN ON THE DRAWING AND ARE NOT TO BE USED FOR REPRODUCTION OR REPLICATION IN ANY MANNER WITHOUT THE WRITTEN CONSENT OF SAMTEC INC.

MISC/MTG
 TSSH-1XX-01-XXX-XX-MKT

520 PARK EAST BLVD, NEW ALBANY, INDIANA 47150
 PHONE (812) 944-6733 P.O. BOX 1147
 CODE 55322

MADE BY: BURREN 10-10-98
 TSSH-1XX-01-XXX-DH-XX
 SHEET 1 OF 2