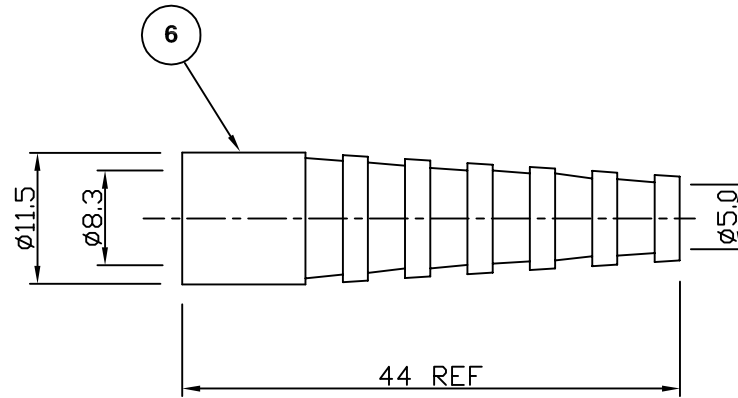
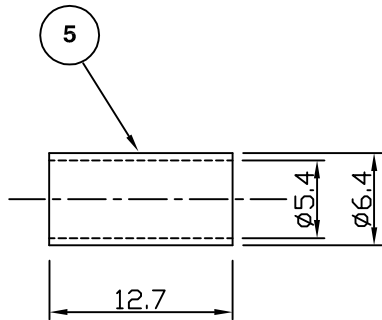
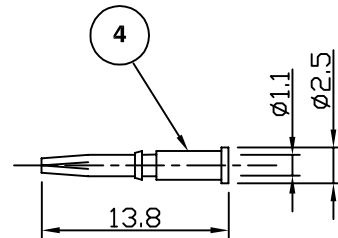
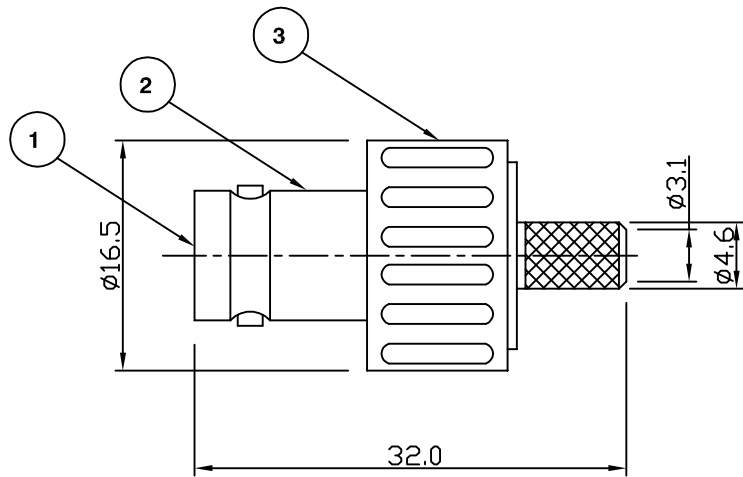


RoHS COMPLIANT



**Electrical Characteristics**

Nominal Impedance:	50 ohms
Frequency Range:	DC to 4 GHz
VSWR:	1.35:1 maximum
Insertion Loss:	0.2 dB Max @ 3 GHz
Operating Voltage (rms):	500 V maximum at sea level
Dielectric Withstand Voltage (rms):	1500 V RMS Maximum
Contact Resistance:	1.5 milliohms maximum
Insulation Resistance:	5000 megohms minimum

**Mechanical Characteristics**

Mating Cycles:	500 cycles minimum
----------------	--------------------

**Environmental Characteristics**

Temperature Range:	-55 °C to +85 °C
--------------------	------------------

PART	DESCRIPTION
1	Dielectric Delrin, White
2	Body Brass, Nickel
3	Insulator Body ABS, Black
4	Contact Brass, Gold
5	Ferrule Brass, Nickel
6	Boot PVC, Black

First Issue	MS	1	23 Mar 10
DESCRIPTION OF REVISION	APPVD	ISS	DATE



Cinch Connectivity Solutions  
7-13 Russel Way,  
Widford Industrial Estate,  
Chelmsford, Essex,  
CM1 3AA, UK.  
Tel: +44 (0) 1245 359515  
Fax: +44 (0) 1245 358938

SCALE: Not To Scale

DIMENSIONS: mm

TOLERANCES:  
± 0.2mm unless  
otherwise stated

DRAWN BY: Johnson

CHECKED BY: M Spooner

APPROVED BY: M Spooner

DATE: 23 Mar 10

TITLE:  
BNC Insulated Crimp Jack

PART NUMBER:  
**VBI30-2051**

PAGE: 1 of 1